

Basso Continuo

"Wer weiß, wie nahe mir mein Ende."

J. S. Bach

1. CHORAL

8

15

23

30

37

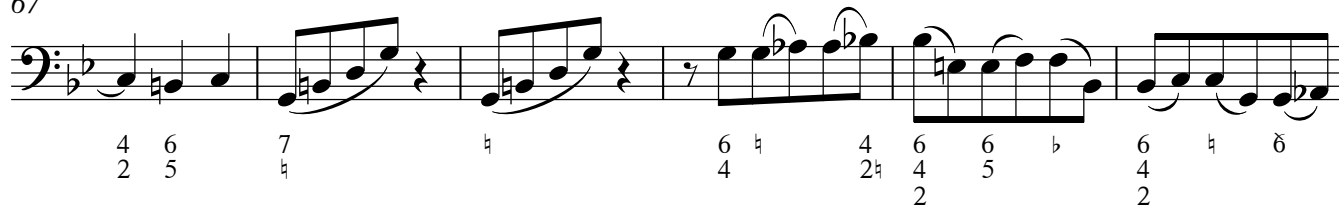
45

52

60

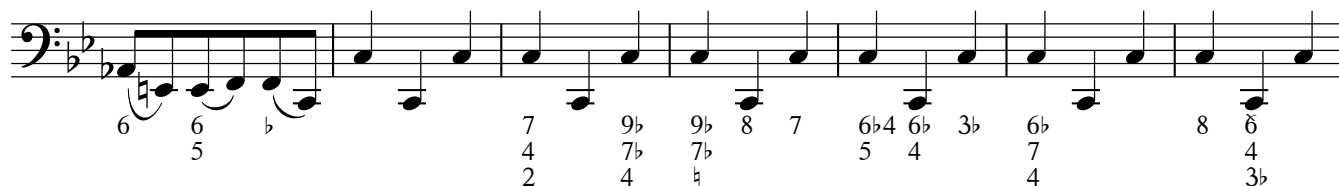
V.S.

67



73

Continuo



80

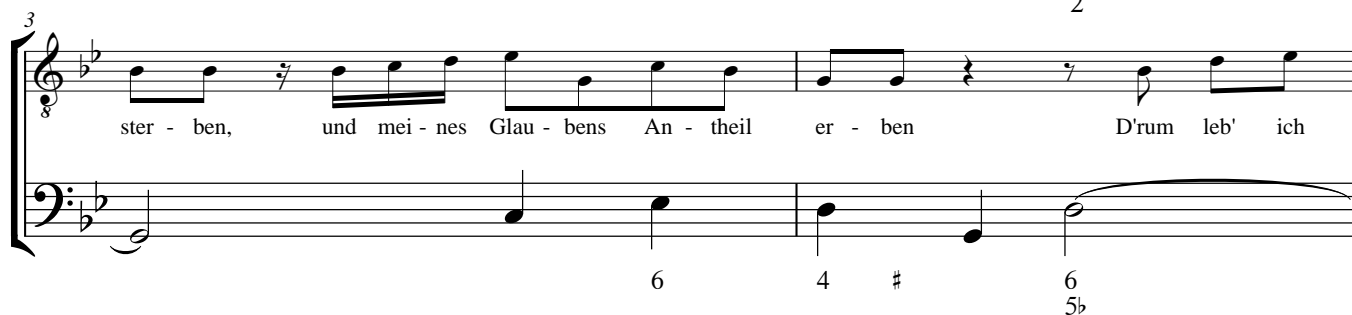
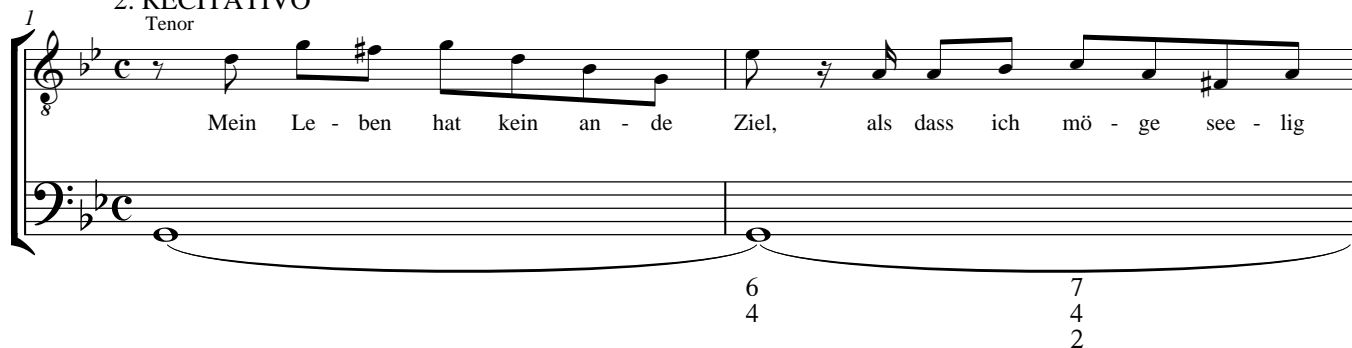


83



2. RECITATIVO

Tenor



7
8
thut, ist gleich - sam ob ich si - cher wüs - ste, dass ich noch heu - te ster - ben

6 7^b 6

9
8
wüs - ste denn En - de gut, macht Al - les gut.

b 6 6 6 6 6

3. ARIA
Alto

1

6
4[#]
2

Organo Obligato

3

5

Measures 5-7 of the Basso Continuo. The key signature is two flats (B-flat and E-flat). The notation is in a single system with three staves. The top staff is a treble clef with a whole rest in each measure. The middle staff is a grand staff (treble and bass clefs) with a complex melodic line in the treble and a supporting bass line. The bottom staff is a bass clef with a supporting bass line. The music is in a 3/4 time signature.

8

Measures 8-10 of the Basso Continuo. The key signature is two flats (B-flat and E-flat). The notation is in a single system with three staves. The top staff is a treble clef with a whole rest in each measure. The middle staff is a grand staff (treble and bass clefs) with a complex melodic line in the treble and a supporting bass line. The bottom staff is a bass clef with a supporting bass line. The music is in a 3/4 time signature.

11

Measures 11-13 of the Basso Continuo. The key signature is two flats (B-flat and E-flat). The notation is in a single system with three staves. The top staff is a treble clef with a whole rest in each measure. The middle staff is a grand staff (treble and bass clefs) with a complex melodic line in the treble and a supporting bass line. The bottom staff is a bass clef with a supporting bass line. The music is in a 3/4 time signature.

14

Will -

17

kom - men! will ich sa - gen, wenn der Tod an's Bet - te tritt will -

19

kom - men, will - kom - men, will ich sa - gen, wenn der Tod an's Bet - te

21

tritt, will - kom - men, will ich sa - gen will -

23

kom - men, will ich sa - gen, wenn der Tod an's Bet - te tritt, will -

25

kom - men, will ich sa - gen, will - kom - en, will ich sa - gen, wen der

27

Tod, der Tod, will - kom - men! will ich sa - gen, wenn der

29

Tod an's Bet - te tritt.

31

V.S.

34

Fröh -

36

- lich will ich fol - gen, frö - lich will ich fol - gen, wenn er

38

ruft, in _____ die Gruft, fröh - - - lich__ folg' ich, _____ fröh -

40

- lich will ich fol - gen, wenn er ruft, in die Gruft, wenn er

42

ruft, fröh - lich folg' ich, fröh - ich folg' ich, wenn er

44

ruft, in die Gruft.

47

Al - le, al - le mei - ne Pla -

50

- gen nehme ich mit, al - le, al - le mei - ne Pla -

52

gen nehme ich mit, al - le, al - - - -

54

le mei - me Pla

56

gen_ nehme ich_ mit. Will - kommen!_ will ich sa - gen,

58

Will -

60

kom - men! will ich sa - gen, wenn der Tod an's Bet - te tritt, will -

62

kom - men, will - kom - men, will ich sa - gen, wenn der Tod an's Bet - te

64

tritt, will - kom - men, will ich sa - gen, will -

66

kom - men, will ich sa - gen, wenn der Tod an's Bet - te tritt, will -

68

kom - men, will ich sa - gen, will - kom - men, will ich sa - gen, wenn der

70

Tod, der Tod, will - kom - men will ich sa - gen, wenn der

72 *tr*
Tod an's Bet - te tritt.

The musical score for measures 72-74 is in G minor (three flats). Measure 72 features a vocal line with a trill on the word 'Bet' and a piano accompaniment. Measures 73 and 74 continue the piano accompaniment with flowing sixteenth-note patterns in both hands.

75

The musical score for measures 75-77 is in G minor. Measure 75 features a vocal line with a trill and a piano accompaniment. Measures 76 and 77 continue the piano accompaniment with flowing sixteenth-note patterns in both hands.

78

The musical score for measures 78-80 is in G minor. Measure 78 features a vocal line with a trill and a piano accompaniment. Measures 79 and 80 continue the piano accompaniment with flowing sixteenth-note patterns in both hands.

4. RECITATIVO

1 Ach, wen doch schon im Him - mel wär! ich ha - be Lust zu schei - den, und mit dem Lamm,

7^b
4

6^b
5^b

6
4⁺
2

4 das al - ler From - men Bäu - ti - gam, mich in der See - lig - keit zu

6
3

6^b

6

5^b

6 wei - den. Flü - gel her! Flü - gel her! Ach, wer doch schon im Him - mel wär!

6
4⁺
2

6^b

6
4⁺
2⁺

5. ARIA
Basso

1

9

13

Gu - te Nacht,

19



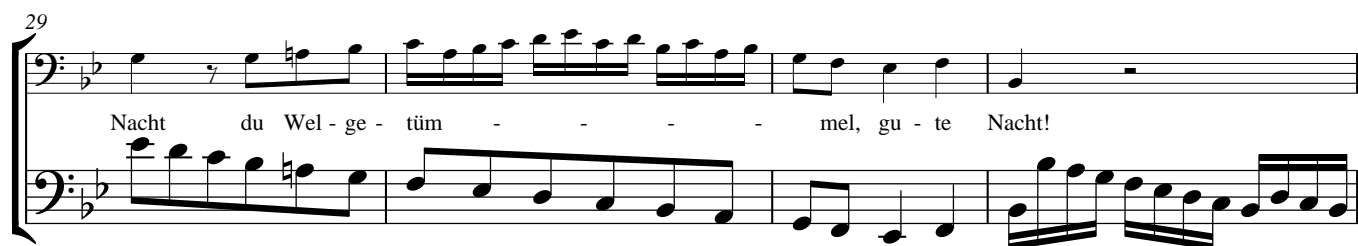
gu - te Nacht, gu - te Nacht, du Welt - ge - tüm - mel, du Welt - ge -

25



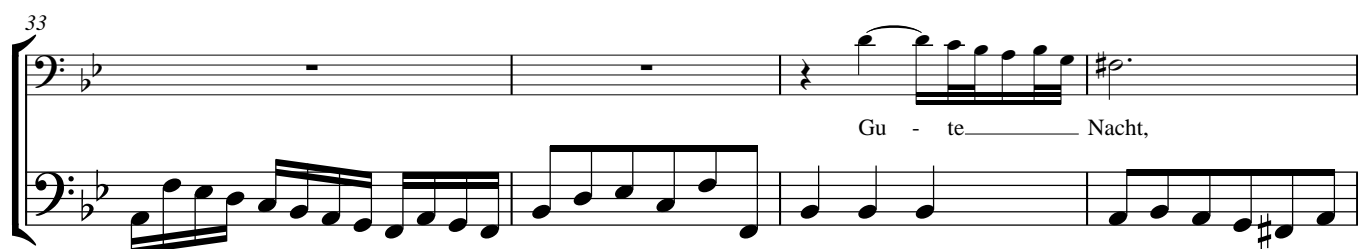
tüm - mel, gu - te Nacht, du Welt - ge - tüm - mel, gu - te Nacht, gu - te

29



Nacht du Wel - ge - tüm - - - - mel, gu - te Nacht!

33



Gu - te Nacht,

37



du Wel - ge - tüm - mel, gu - te Nacht, du Welt - ge -

41



tüm - mel, gu - te Nacht, gu - te Nacht, du Welt - ge -

44

tüm - - - mel, gu - te Nacht!

50

Jetzt mach' ich mit dir - - - Be -

56

schluss; ich steh' - - - schon mit ei - nem Fuss, - - - ich steh' - - - schon mit ei - nem

62

Fuss - - - bei - dem - lie - ben - Gott - - - im Him - mel, ich steh' - - -

68

- - - schon mit ei - nem Fuss - - - bei - dem - lie - ben - Gott -

74

im - - - Him - mel. Gu - te - - - Nacht,

80

du Wel - ge - tūm - mel, gu - te Nacht, du Welt - ge -

84

tūm - mel, gu - te Nacht, gu - te Nacht, du Welt - ge -

87

tūm - - - mel, gu - te Nacht!

92

1 6. CHORAL

7

13

18