

# GIGUE

From the 5th French Suite

BWV 816

Arranged for ATB Recorders by R. D. Tennent<sup>†</sup>

J. S. Bach (1685–1750)

5

9

13

---

<sup>†</sup>Original in G Major.

17



System 17-20: This system contains measures 17 through 20. It features a three-staff arrangement with treble and bass clefs. The music includes eighth and sixteenth notes, with a melodic line in the upper staff and a more rhythmic accompaniment in the lower staves. A long horizontal slur is present over the final measure of the system.

21



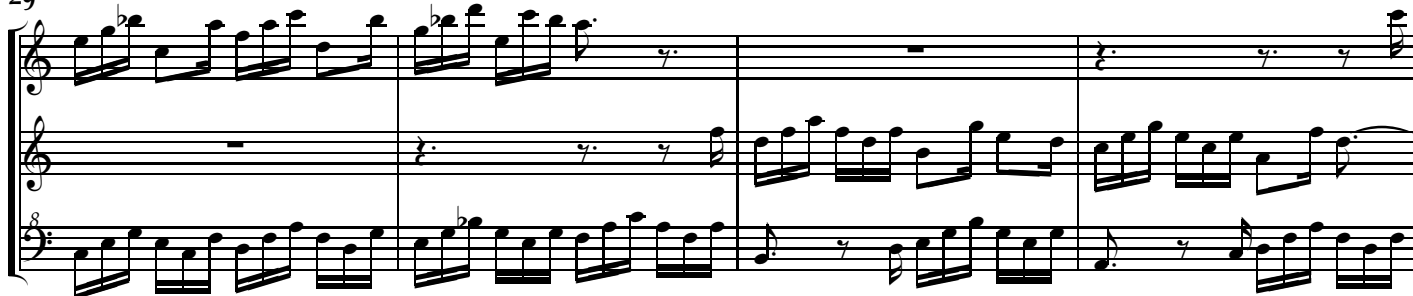
System 21-24: This system contains measures 21 through 24. It continues the three-staff arrangement. The music features a mix of eighth and sixteenth notes, with some measures containing rests. The system concludes with repeat signs in the final measure.

25



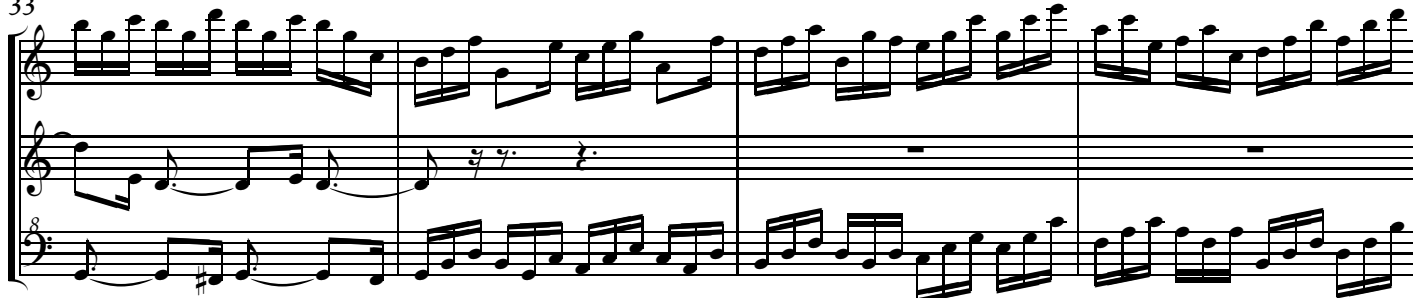
System 25-28: This system contains measures 25 through 28. It begins with a double bar line and repeat signs. The music is characterized by a steady eighth-note accompaniment in the lower staves and a more active melodic line in the upper staff.

29



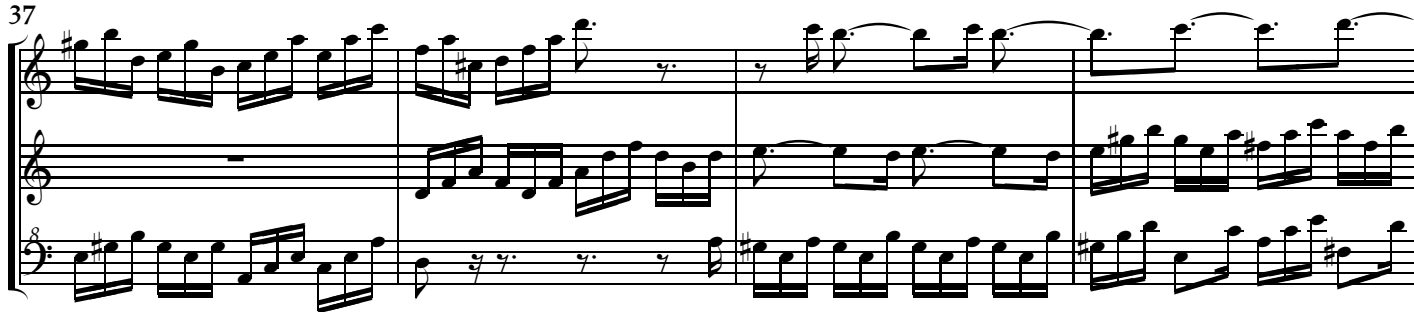
System 29-32: This system contains measures 29 through 32. The three-staff arrangement continues. The music features a mix of eighth and sixteenth notes, with some measures containing rests. The system concludes with repeat signs in the final measure.

33



System 33-36: This system contains measures 33 through 36. It continues the three-staff arrangement. The music features a mix of eighth and sixteenth notes, with some measures containing rests. The system concludes with repeat signs in the final measure.

37



41



45



49



53

