

BWV 541

Partitur

J.S. Bach

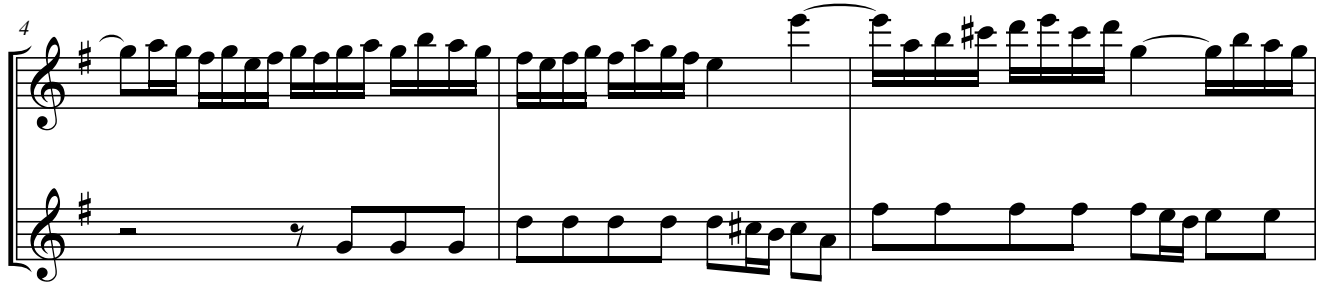
M. Olschewski, 2011

$\text{♩} = 100$

Altbloekflöte



Abfl.



Tbfl.

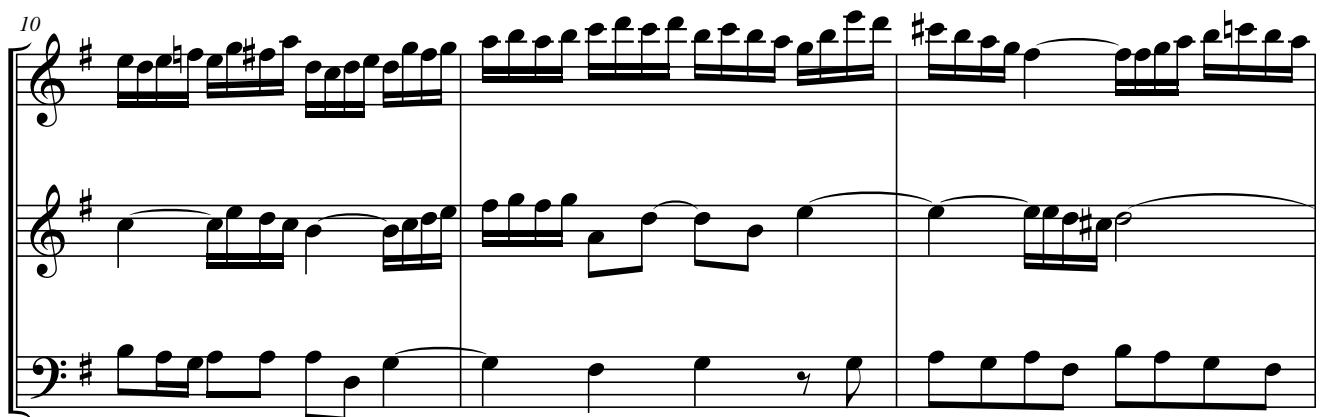
Abfl.



Tbfl.

Bbfl.

Abfl.



Tbfl.

Bbfl.

BWV 541

2
13

Sbfl.

Abfl.

Tbfl.

Bbfl.

16

Sbfl.

Abfl.

Tbfl.

Bbfl.

19

Sbfl.

Abfl.

Tbfl.

Bbfl.

22

Sbfl.

Abfl.

Tbfl.

Bbfl.

This system contains measures 22, 23, and 24. The Soprano Flute (Sbfl.) part begins with a quarter note G4, followed by eighth notes A4, B4, and C5 in measure 22. In measure 23, it plays a continuous sixteenth-note scale from G4 to G5. The Alto Flute (Abfl.) part has a sixteenth-note scale in measure 22, rests in measure 23, and a quarter note G4 in measure 24. The Tenor Flute (Tbfl.) part has a quarter note G4, followed by eighth notes A4, B4, and C5 in measure 22, and a continuous sixteenth-note scale in measure 23. The Bass Flute (Bbfl.) part has a quarter note G3, followed by eighth notes A3, B3, and C4 in measure 22, and a continuous sixteenth-note scale in measure 23.

25

Sbfl.

Abfl.

Tbfl.

Bbfl.

This system contains measures 25, 26, and 27. The Soprano Flute (Sbfl.) part has a continuous sixteenth-note scale in measure 25, a quarter note G4 in measure 26, and a continuous sixteenth-note scale in measure 27. The Alto Flute (Abfl.) part has a quarter note G4 in measure 25, a continuous sixteenth-note scale in measure 26, and a continuous sixteenth-note scale in measure 27. The Tenor Flute (Tbfl.) part has a continuous sixteenth-note scale in measure 25, a quarter note G4 in measure 26, and a continuous sixteenth-note scale in measure 27. The Bass Flute (Bbfl.) part has a continuous sixteenth-note scale in measure 25, a quarter note G3 in measure 26, and a continuous sixteenth-note scale in measure 27.

28

Sbfl.

Abfl.

Tbfl.

Bbfl.

This system contains measures 28, 29, and 30. The Soprano Flute (Sbfl.) part has a continuous sixteenth-note scale in measure 28, a quarter note G4 in measure 29, and a continuous sixteenth-note scale in measure 30. The Alto Flute (Abfl.) part has a continuous sixteenth-note scale in measure 28, a quarter note G4 in measure 29, and a continuous sixteenth-note scale in measure 30. The Tenor Flute (Tbfl.) part has a continuous sixteenth-note scale in measure 28, a quarter note G4 in measure 29, and a continuous sixteenth-note scale in measure 30. The Bass Flute (Bbfl.) part has a continuous sixteenth-note scale in measure 28, a quarter note G3 in measure 29, and a continuous sixteenth-note scale in measure 30.

BWV 541

4
31

Sbfl.

Abfl.

Tbfl.

Bbfl.

34

Sbfl.

Abfl.

Tbfl.

Bbfl.

37

Sbfl.

Abfl.

Tbfl.

Bbfl.

40

Sbfl.

Abfl.

Tbfl.

Bbfl.

43

Sbfl.

Abfl.

Tbfl.

Bbfl.

46

Sbfl.

Abfl.

Tbfl.

Bbfl.

BWV 541

6
49

Sbfl.

Abfl.

Tbfl.

Bbfl.

52

Sbfl.

Abfl.

Tbfl.

Bbfl.

55

Sbfl.

Abfl.

Tbfl.

Bbfl.

58

Sbfl.

Abfl.

Tbfl.

Bbfl.

61

Sbfl.

Abfl.

Tbfl.

Bbfl.

64

Sbfl.

Abfl.

Tbfl.

Bbfl.

BWV 541

8
67

Sbfl.

Abfl.

Tbfl.

Bbfl.

70

Sbfl.

Abfl.

Tbfl.

Bbfl.

73

Sbfl.

Abfl.

Tbfl.

Bbfl.

76

Sbfl.

Abfl.

Tbfl.

Bbfl.

79

Sbfl.

Abfl.

Tbfl.

Bbfl.

82

Sbfl.

Abfl.

Tbfl.

Bbfl.

rit.