

# Variations on a Rococo Theme

Francisco Esparza  
Moderato assai  
quasi Andante

Arrangement for viola

P.I. Tchaikovsky, op. 33

Moderato semplice  
Thema

20

*p* *express.* *f*

29 1. 2.

*p* *p* *f* *pp*

35 1. 2.

*f* *f* *p*

40 5

*f* *p*

48 Tempo del thema

Var. I

51

54 *cresc.* *piu f*

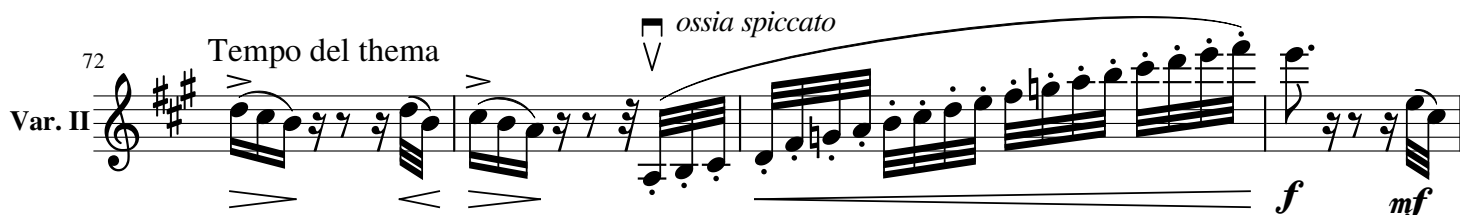
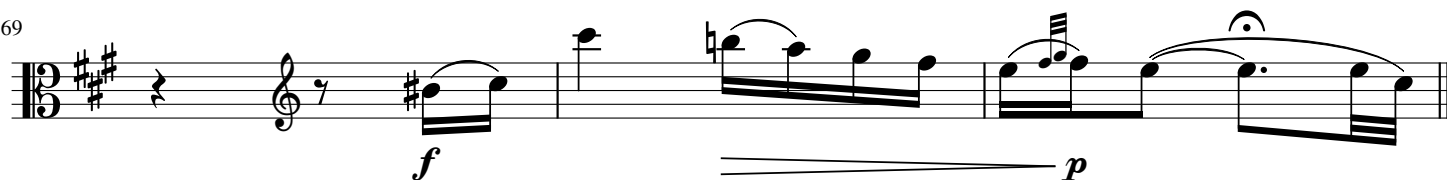
57 *ff* *p*

60 *mf*

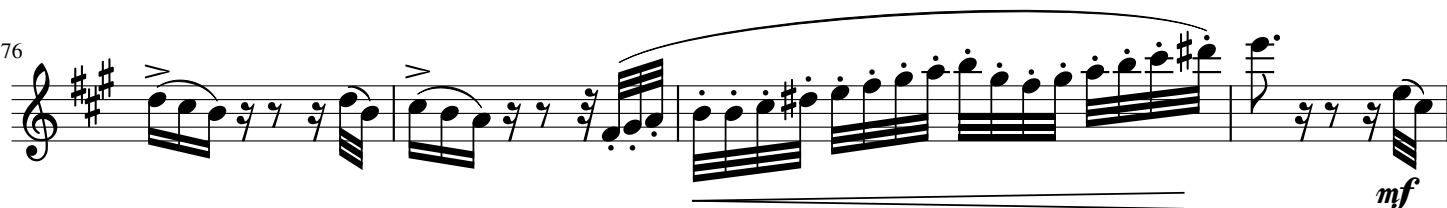
63 5

*p*

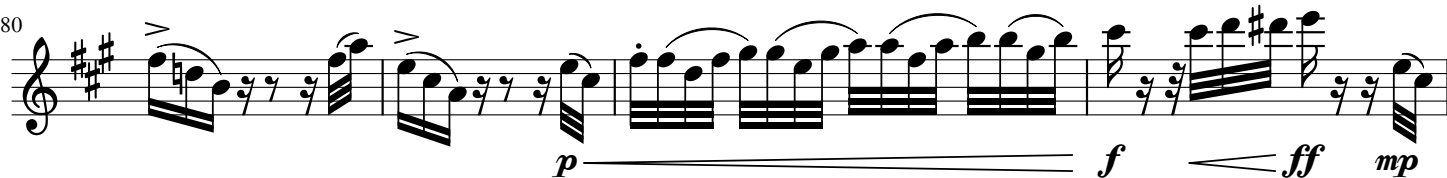
69



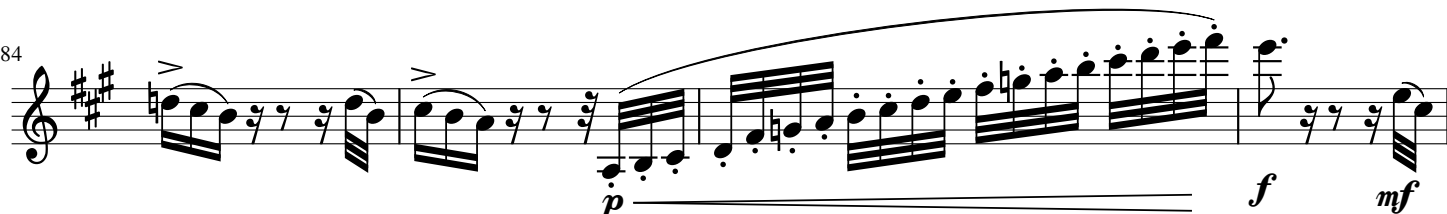
76



80



84



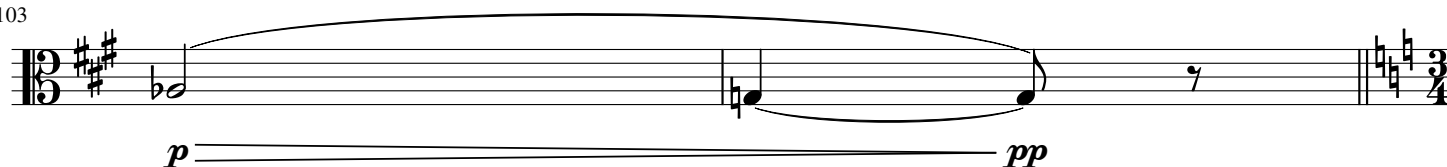
88



97



103



Andante sostenuto

*cantabile*

Var. III 105  $mf$   $\text{cresc.}$   $f > p$

114  $\text{cresc.}$   $f$   $mf$   $p$

122  $\text{cresc.}$   $f$   $p$   $f$   $p > pp$  *poco a poco stringendo*

130  $p$   $mf$   $f$   $\text{cresc.}$

138  $ff$  *rit.* *a tempo*  $mf$

145  $p$   $\text{cresc.}$   $f$

151  $mf$   $p$   $\text{cresc. e string.}$

159  $f$   $\text{cresc.}$   $ff$  *a piacere*

165  $p$  *dolce*  $tr\#$

171  $pp$   $pp$  *molto riten.*  $dim.$   $ppp$

Var. IV

Andante grazioso

175 *mf* *f* *p* *rit.* *a tempo*

180 *cresc.* *f* *p* *un poco animato*

186 *mf*

189 *cresc.* *ff*

191 8

192 8 *dim.*

194 *rit.* *a tempo*

198 *f* *pp* *cresc.* *rit.* *f* *p*

203 *un poco animato*

206 *mf* *cresc.*

208 *ff*

210 *dim.*

212 *rit.* *a tempo* *mf*

216 *rit.* *a tempo* *f* *pp* *p* *f*

221 *p* *cresc.*

225 *p*

229 *tr* *tr* *p*

233 *Allegro moderato* *tr* *cresc.* *3* *3* *3* *3* *f* *cresc.*

Var. V

241 *ff* *3* *Cadenza* *f pesante*

247 *cresc.*

250 *ff* *tr*

252 *rit.* *a tempo* *p* *tr*

257 *f* *p* *p* *cresc.* *f cresc.* *tr*

265 *ff* *pp* *cresc.* *Quasi improvando* *5*

276 *f* *p* *a piacere*

279 *cresc.*

281 *rit.* *ff* *Cadenza* *(cresc.)* *arco gettato*

285 *p* *f* *rit.*

287

289



291



295



299

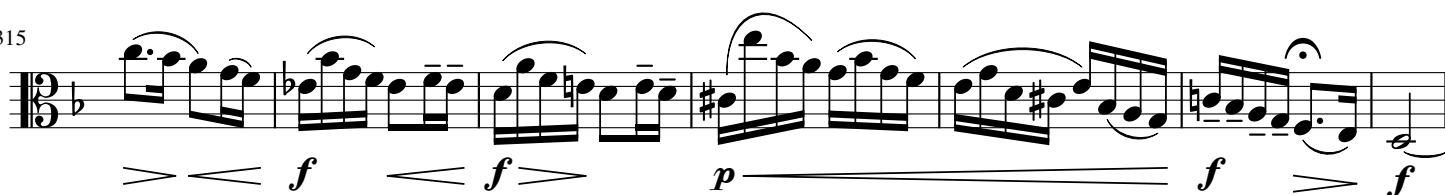
Andante



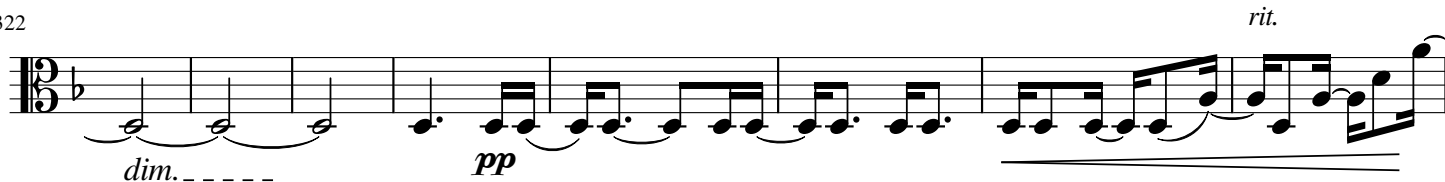
307



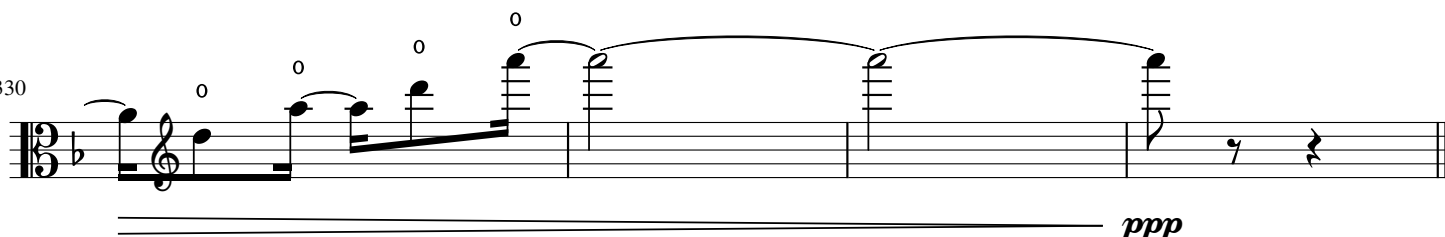
315



322



330



Allegro vivo (♩)  
Coda.

334  
Var. VII

*mf* *cresc.*

337

*(cresc.)* *f* *pp*

339

341 *cresc.* *f* *cresc.*

344 *(cresc.)*

346 *(cresc.)* *ff* *f*

349 *dim.* *p*

352 *cresc.* *f* *cresc.*

355 *(cresc.)*

357 *ff* *fp*

359 *dim.*

361 *(dim.)* *p*

363 *mf*

365 *cresc.* *f* *pp*

367 *p*

369 *cresc.* *f*

372 *f*

374 *p*

376 *p* *cresc.*

378 *(cresc.)* *f*

380

382 *ff*

385 *cresc.* *ff*

389 *ff p cresc.*

394 *ff* *rit.* *a tempo*

397 *f p*

399 *f p*

401 *cresc.*

403 *(cresc.)*

406 *fff* *pesante*

Detailed description of the musical score: The score consists of eight staves of music. Measures 380-385 are in bass clef, 386-393 are in treble clef, and 394-406 return to bass clef. The music is characterized by rapid, flowing passages with frequent beaming and slurs. Measure 382 starts with a fortissimo (ff) dynamic. Measure 385 includes a crescendo (cresc.) and fortissimo (ff) marking. Measure 389 has fortissimo (ff), piano (p), and crescendo (cresc.) markings. Measure 394 begins with fortissimo (ff) and includes a ritardando (rit.) and a tempo marking. Measure 397 shows a transition from forte (f) to piano (p). Measure 399 also shows forte (f) to piano (p). Measure 401 has a crescendo (cresc.) marking. Measure 403 has a crescendo (cresc.) marking. Measure 406 starts with fortississimo (fff) and ends with a pesante (heavy) marking. The key signature is D major (two sharps). The time signature is 3/4.