

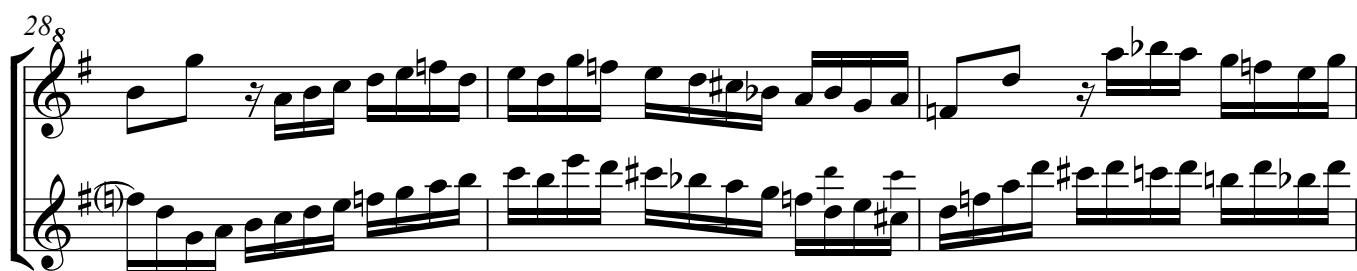
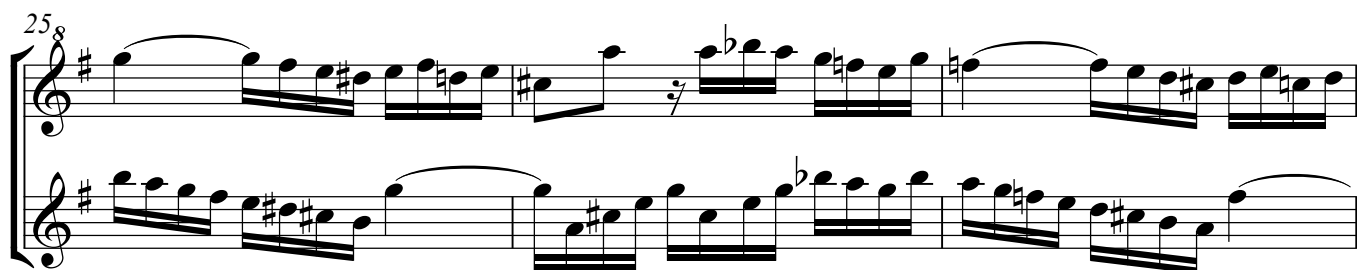
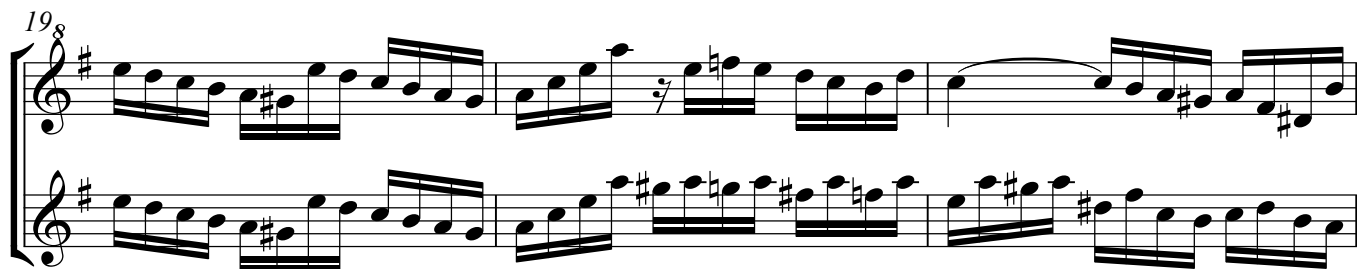
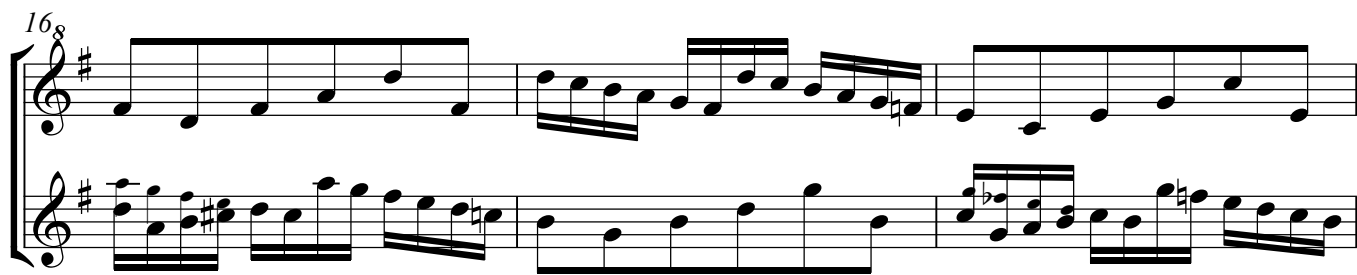
Fuga à 2

from Das Wohltemperierte Clavier, Preludium und Fuge in e, BWV 855

J.S. Bach (1685 Eisenach - 1750 Leipzig)

Descant Rec.

Treble Rec.



The image shows four systems of musical notation, measures 33 through 40. Each system consists of two staves. The key signature is one sharp (F#). The notation includes various musical symbols such as notes, rests, and brackets. Brackets above the lower staff indicate where the original melody lines are preserved. Cue notes are used to indicate the original melody lines. The piece is transposed one octave up, and the lower staff is transposed one octave more, except at the places with brackets above it.

I transposed the piece one octave up, and the lower staff one octave more, except at the places with brackets above it. To prevent the inversion of chords and some clashing of seconds where the original had ninths I had to change some other notes as well; I indicated the original melody lines by cue notes. I transposed the upper part an octave up in two places, indicated by brackets beneath the staff. The preceding Preludium is mostly in three parts or more, so I did not arrange it.