

(Grüss an G.*)

arr. John Howard

[illegible]

The musical score for 'The Rose Tree' is presented in a standard Western musical notation format. It consists of five staves: two vocal staves (Soprano and Alto) and three piano accompaniment staves (Right Hand, Left Hand, and a separate Bass line). The key signature is one flat (B-flat), and the time signature is 3/4. The score is divided into measures by vertical bar lines. The vocal parts feature lyrics in both English and German. The piano accompaniment includes various musical notations such as notes, rests, and dynamic markings like 'f' (forte) and 'p' (piano). The score is labeled with '8' in the top left corner, indicating the page number.

14

pp

pp

pp

pp

pp

s

*) Niels W. Gade

**) original notation:

Violin I

Nordisches Lied

(Grüss an G.*)

Robert Schumann op. 68 n. 40

arr. John Howard

Im Volkston

8

14

p

f

pp

p

*) Niels W. Gade

**) original notation:



Violin II

Nordisches Lied

(Grüss an G.*)

Robert Schumann op. 68 n. 40

arr. John Howard

Im Volkston

8

15

p

f

p

pp

*) Niels W. Gade

Viola

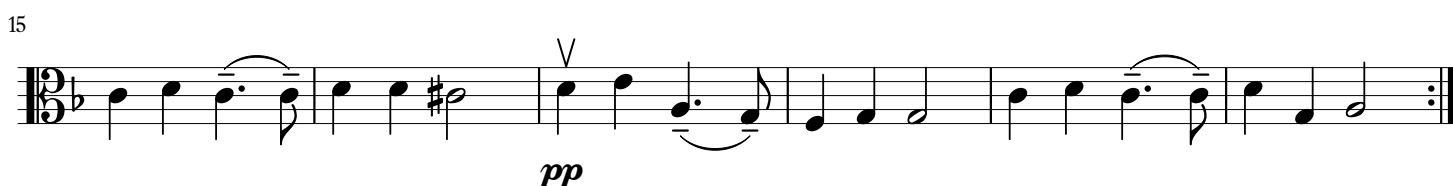
Nordisches Lied

(Grüss an G.*)

Robert Schumann op. 68 n. 40

arr. John Howard

Im Volkston



*) Niels W. Gade

Cello

Nordisches Lied

(Grüss an G.*)

Robert Schumann op. 68 n. 40

arr. John Howard

Im Volkston

8

14

p

f

pp

*) Niels W. Gade

ARR. JOHN HOWARD, TYPESET BY TIZIANO MATTEI 2017

Double Bass

Nordisches Lied

(Grüss an G.*)

Robert Schumann op. 68 n. 40

arr. John Howard

Im Volkston

8

8

f

p

[illegible]

*) Niels W. Gade