

Tamás Beischer-Matyó

# **Concerto antico**

for violin, cello and string orchestra

**Cello**

# Cello

dedicated to László G. Horváth, Rózsa Richárd  
and the Anima Musicæ Chamber Orchestra

## Concerto antico

for violin, cello and string orchestra

### I

**Vivace** ♩ = 138

5

Tamás Beischer-Matyó



*pp*

13



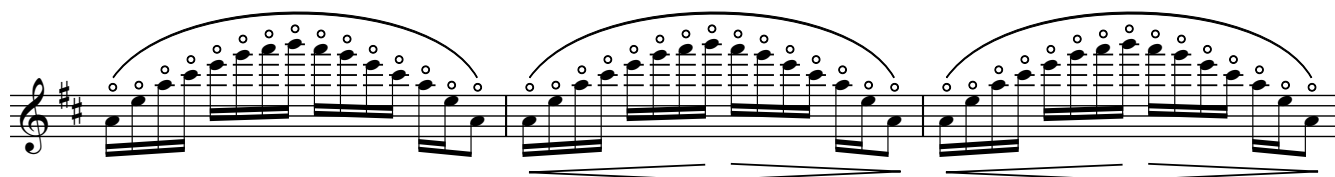
25



32



gliss.



Copyright Tamás Beischer-Matyó, 2020

This work is licensed under the Creative Commons Attribution-NonCommercial-NoDerivatives 4.0 International License.  
To view a copy of this license, visit <https://creativecommons.org/licenses/by-nc-nd/4.0/>

[http://beisчерmatyo.hu/concerto\\_antico](http://beisчерmatyo.hu/concerto_antico)  
[bmt@beisчерmatyo.hu](mailto:bmt@beisчерmatyo.hu)

41

col legno

*p* *f* *p* *f*

col legno

*p* *f* *p* *f*

46

pizz. *f* *ff* arco

pizz. *f* *ff* arco

50

*sfz* *p* *sfz* *p*

*sfz* *p* *sfz* *p*

58

solo *p* II

*sfz* *p*

*sfz* *p*

(II)

solo

68

*ppp*

*pp*

*pp*

74

*rit.* ----- **Allegro moderato** ♩ = 88

*ppp*

*p*

*ppp*

*p*

79

*f*

*p*

*p*

*f*

*f*

*p*

*p*

*f*

83

*pesante*

*pp*

*pizz.*

*arco*

*p*

*pesante*

*pp*

*pizz.*

*p*

87

91

*mf*

*arco*

*mf*

**97** **Vivo** ♩ = 112

*ff* *sfz* *p*

*f* *p* *f* *pizz.*

**106**

*rit.* . . . . *a tempo* ♩ = 112

*arco* *pp* *pizz.* *f* *p*

**111**

*pizz.* *ff*

**116**

*rall.* . . . . ♩ = 76 *rit.* . . . .

*mp* *pp* *gliss.* *mp* *pp*

♩ = 69  
arco  
con sord.

**125**

*rall.* - - - - **Adagio** ♩ = 63 *rall.*

*pp*  
arco  
con sord.

*ppp*

♩ = 60 *rall.* - - ♩ = 58

**129**

*pp*

*rall.* ♩ = 56

*rall.* - - ♩ = 54

**135**

*rall.* - - - - ♩ = 52

**139**

**Vivace** ♩ = 138

*ppp*

*ppp*

**147**

(o) (o) gliss.

**157**

8 senza sord.

*f* senza sord.

*f*

**162**

*p*

*p*

171

Measures 171-180. The score is written for Cello in bass clef with a key signature of one sharp (F#). Measures 171-175 show a melodic line with a crescendo from *f* to *p*. Measures 176-180 continue the melodic line with a decrescendo from *p* to *f* and back to *p*. The lower staff provides harmonic support with sustained notes and moving lines.

180

Measures 181-188. The melodic line continues with a crescendo from *f* to *p* in measures 181-185, followed by a decrescendo from *p* to *f* and back to *p* in measures 186-188. The lower staff continues with harmonic support.

188

Measures 189-195. The melodic line features a crescendo from *f* to *p* in measures 189-193, followed by a decrescendo from *p* to *f* and back to *p* in measures 194-195. The lower staff continues with harmonic support.

195

Measures 196-203. The melodic line features a crescendo from *f* to *sfz* to *p* in measures 196-199, followed by a decrescendo from *p* to *sfz* and back to *p* in measures 200-203. The lower staff continues with harmonic support.

203

Measures 204-210. The melodic line features a crescendo from *sfz* to *p* in measures 204-208, followed by a decrescendo from *p* to *sfz* and back to *p* in measures 209-210. The lower staff continues with harmonic support.

210

10

220

2

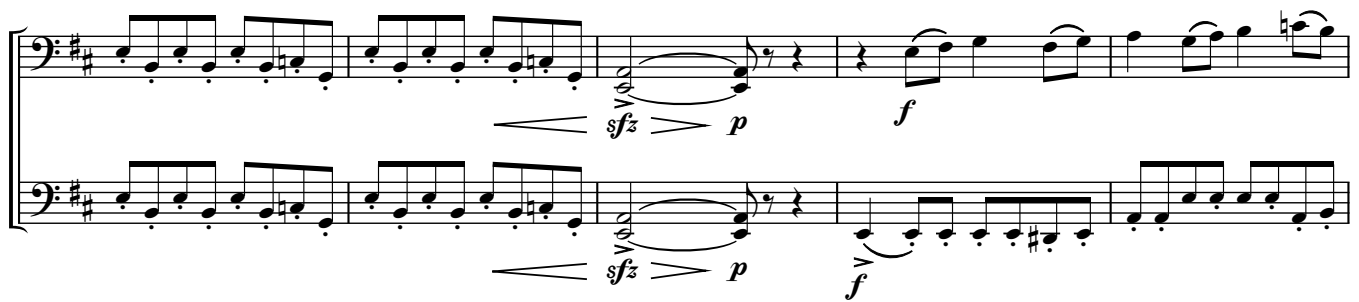
S. vln.

Measures 211-220. The score is written for Cello in bass clef with a key signature of one sharp (F#). Measures 211-215 show a melodic line with a crescendo from *f* to *p*. Measures 216-220 continue the melodic line with a decrescendo from *p* to *mf* and back to *p*. The lower staff provides harmonic support with sustained notes and moving lines.

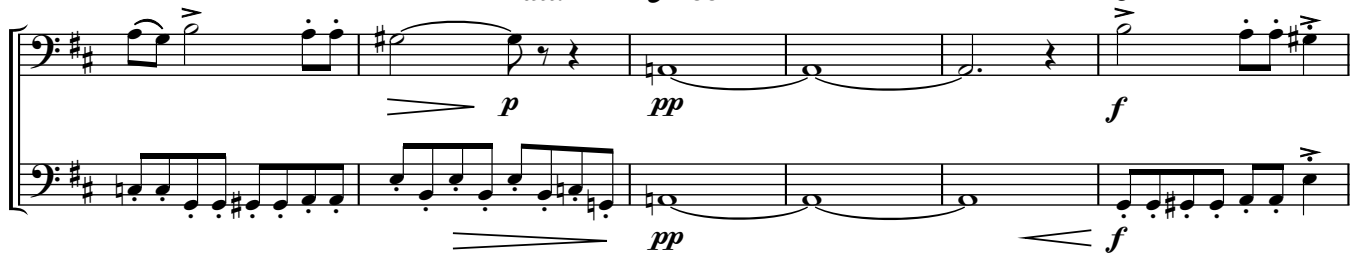
**228**  
rit. molto - - - - - a tempo ♩ = 138



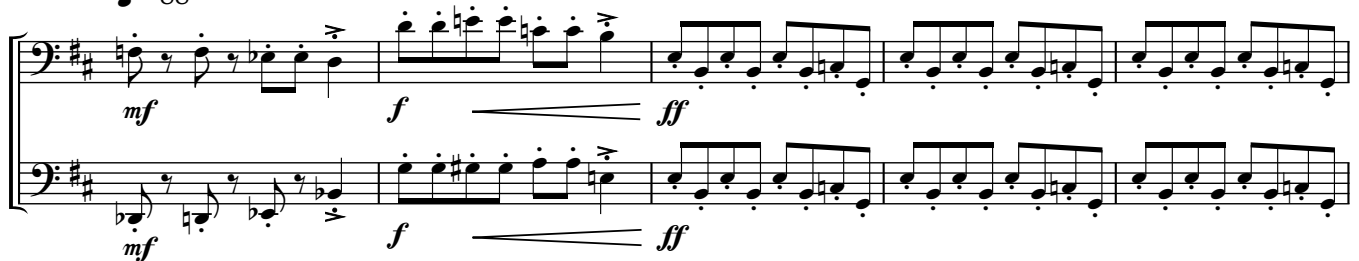
**234**  
rall. - - - ♩ = 88 a tempo ♩ = 138



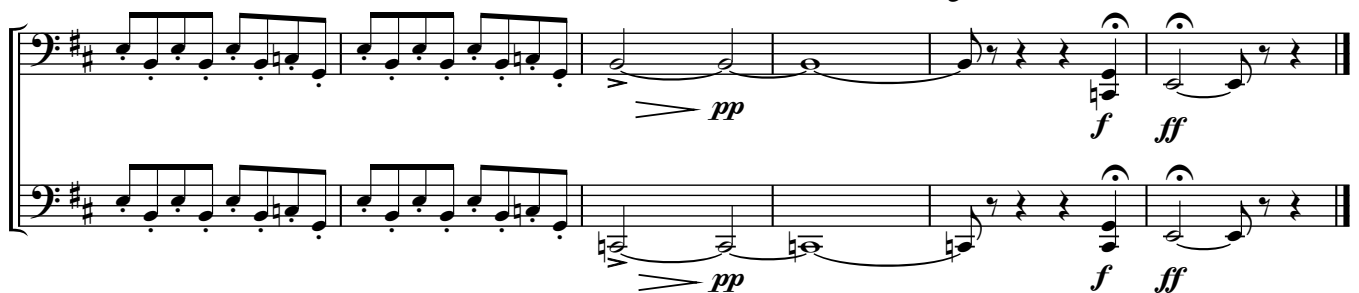
**239**  
rall. - - - ♩ = 88 ♩ = 138



**244**  
♩ = 88 ♩ = 138

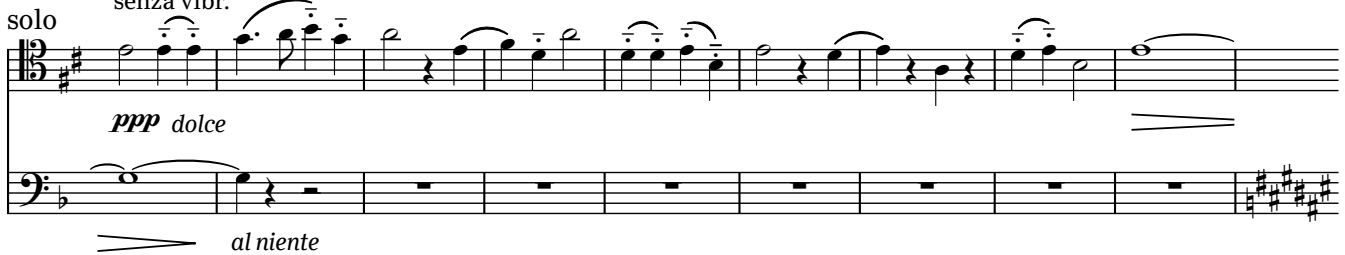


rall. - - - - - ♩ = 88





## II

**Con moto** ♩ = 126con sord.  
sul tasto, senza vibr.**10**con sord.  
senza vibr.**19****27****33****37**

sul tasto (senza vibr.)

*rit.* - - - - - *a tempo* **43**

[47] **rall. molto** . . . . **Un poco agitato** ♩ = 138

solo

*ppp*  
col legno  
*pp*

[56] **un poco tratt.** ♩ = 112 **a tempo** ♩ = 138 [61]

solo

(senza sord.)

*mf* *pp*  
ord.  
*p* *ppp* *pp* *mp*  
col legno

[68] **rall.** . . . . **un poco tratt.** ♩ = 112

solo

sul tasto (senza vibr.)

*ppp*  
*pp*

[77] **rit.** ♩ = 112 **rit.** ♩ = 112 **rit.** **Con moto** ♩ = 126

solo

ord.  
ten. ten.  
*mp*

[82] **rall.** . . . . **un poco tratt.** ♩ = 112

solo

*pp* *mp* *ppp*  
col legno  
ord.  
*pp* *f* *pp*  
col legno  
ord.  
*pp* *f* *pp*

[89] **rall. molto** . . . . **Un poco agitato** ♩ = 138

*ppp* *f* *pp*  
*ppp* *f* *pp*

100



104

rall. molto  $\text{al } \text{♩} = 84$  un poco tratt.  $\text{♩} = 112$ 

arco

110

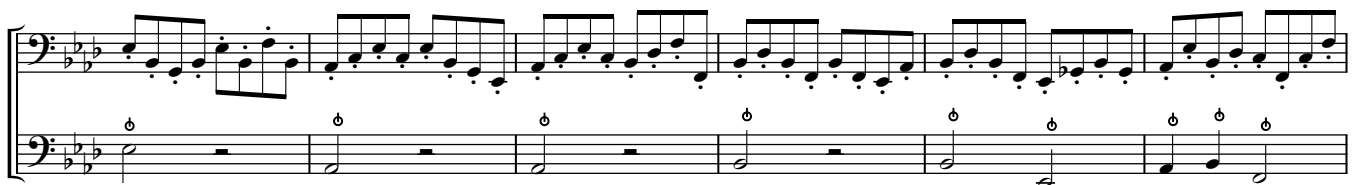
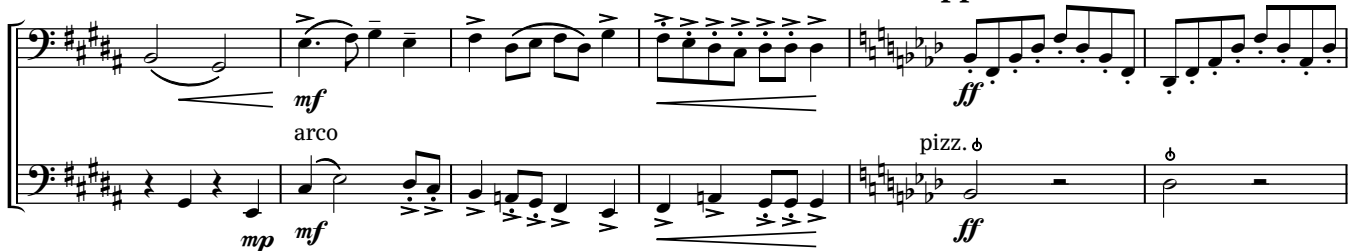


114

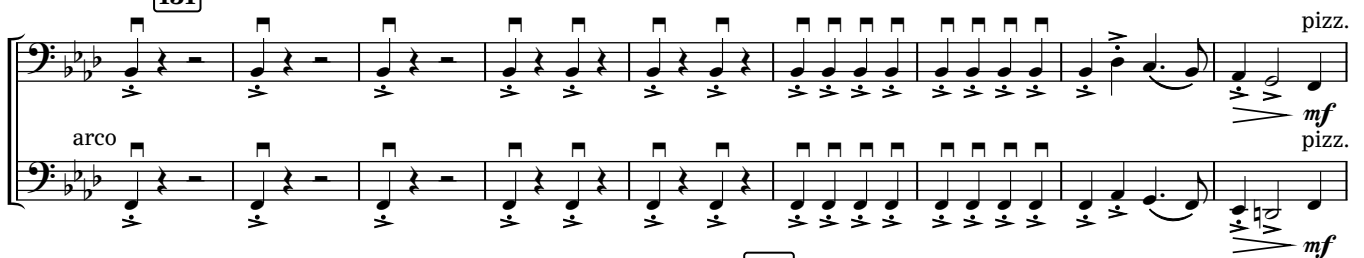
rit. - a tempo



123

rit. - - - Appassionato  $\text{♩} = 168$ 

131



144

tratt.  $\text{♩} = 152$  rit. - a tempo  $\text{♩} = 168$ 

148



152

156

160



168 **Con moto** ♩ = 126

*rall.* ----- *al* ♩ = 84

arco *ppp* *p*

arco *ppp* *p*

177 *col legno* *ppp* *p*

*col legno* *ppp* *p*

183 *ord.* *rit.* -----

*ord.*

191 *a tempo* (spicc.) *rit.* -----

*pp*

197

*a tempo**rall.* ..... **Lento molto** ♩ = 48

202

Vln. I-II  
con sord.

con sord.

*rit.* ...*a tempo* ♩ = 48*rit.* ...

211

♩ = 112

*poco accel.* ...

215

**Un poco agitato** ♩ = 138

221

*rall.* ...

♩ = 112

*rall.*

♩ = 96

229

*rall.* ... ♩ = 76*rall.* ...

col legno

## III

**Allegretto** ♩ = 88

musical score for Cello, III, Allegretto (♩ = 88). The score is written in 6/8 time and consists of two staves. The key signature is three sharps (F#, C#, G#).

The score is divided into measures, with measure numbers 8, 16, 24, and 33 indicated in boxes. The tempo is marked **Allegretto** with a quarter note equal to 88 beats per minute (♩ = 88).

Dynamic markings include *sfz* (sforzando), *pp* (pianissimo), *mp* (mezzo-piano), and *pp* (pianissimo). The instruction *sul pont.* (sul ponticello) is used throughout the piece, indicating the bow should be played near the bridge.

The score includes various musical notations such as slurs, ties, and rests, indicating phrasing and articulation. The piece concludes with a final *pp* marking.

42

*f*

*f*

pizz.

*p*

52

arco

57

*ff*

*ff*

66

73

Meno mosso ♩ = 76

*ppp*

84



92



102



110

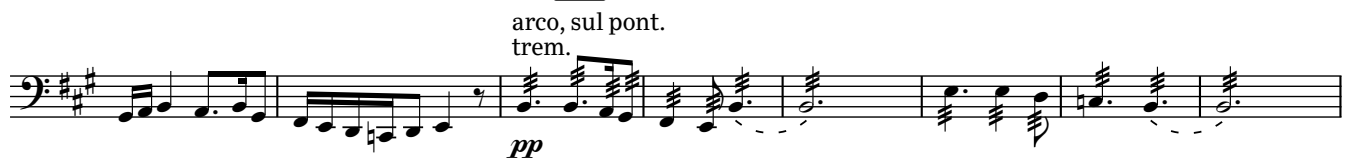
### Allegretto ♩ = 88



115



123



133

### Allegro vivace ♩ = 152





138 Vln. I

142 *mp*

146

*mf* *f* *ff*

S. vln. 153 *ff* *mf* ord. *f* *ff*

159 *ff*

167

173 *pp* *pp*

solo

solo

solo

*pp* duro e ritmico

182

*mp*

solo

188

*p**mp**pp**p*

solo

193

*p**p**f*

solo

199

*mp**mf**mp*

solo

*mp**mp*

206

solo

*f*

213

solo

*p* *mf*

*p*

*pp*

217

solo

pizz.

*p* *ff* *mp*

225

arco

*ff*

233

240

*mf*

246

*ff*

250 pizz. *p* 254 arco *mp*

258 *mf* 262 *f*

*ff*

269

275 *poco rall.* *Allegretto* ♩. = 88 *pp* sul pont. - - - > ord. *mp* *pp*

281 sul pont. - - - > ord. *mp* *pp* *p* *p*

289

297



306



315

un poco tratt. ♩. = 76

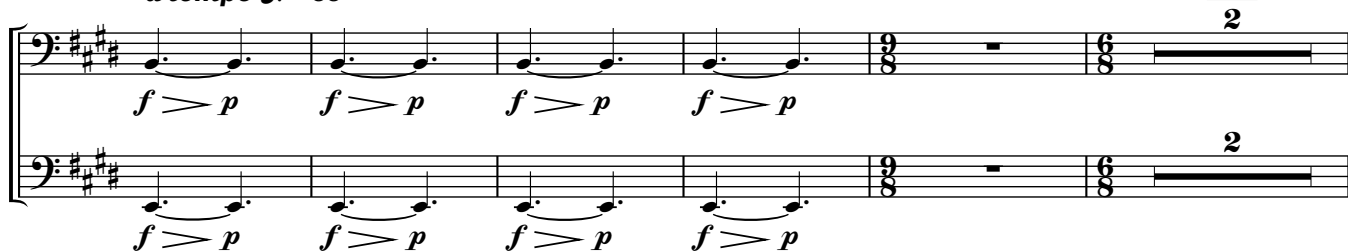
rit. . . . . accel. . . . .



320

a tempo ♩. = 88

325



329

rit. . . . . a tempo

S. vc.



337

pizz.

arco



poco rit. . . . .

