

Trompa en La y Re

Sinfonia No 21

en La Mayor
K. 134

Wolfgang Amadeus Mozart
Transcrip. Gory
info@gory.jazztel.es

I. **Allegro**
en La

7 a 2. 2

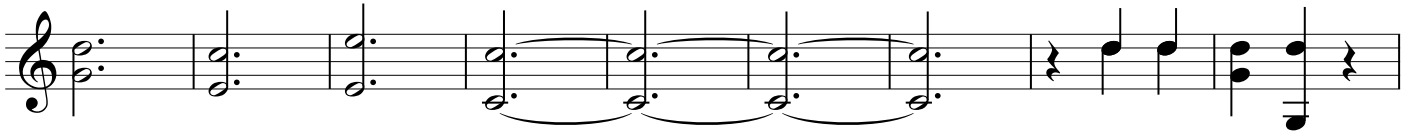
1 16

4

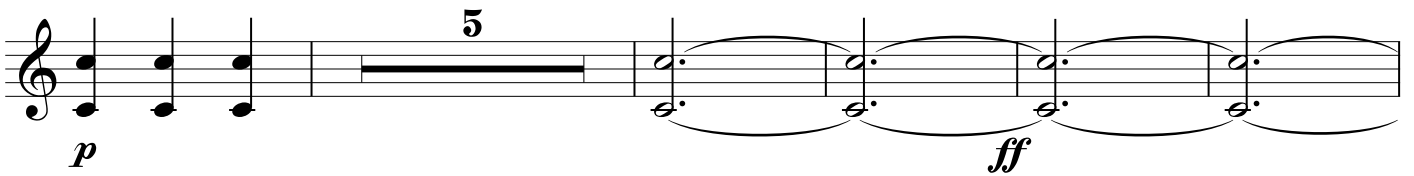
2 7

p

3 15

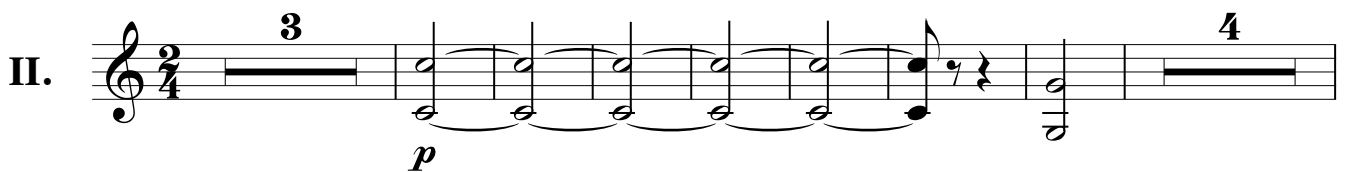


4

*cresc.*

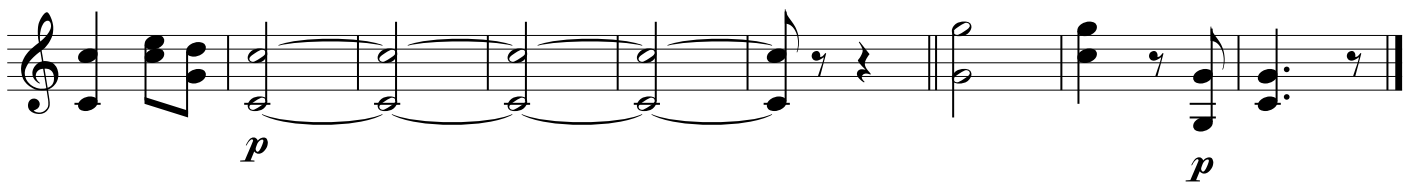
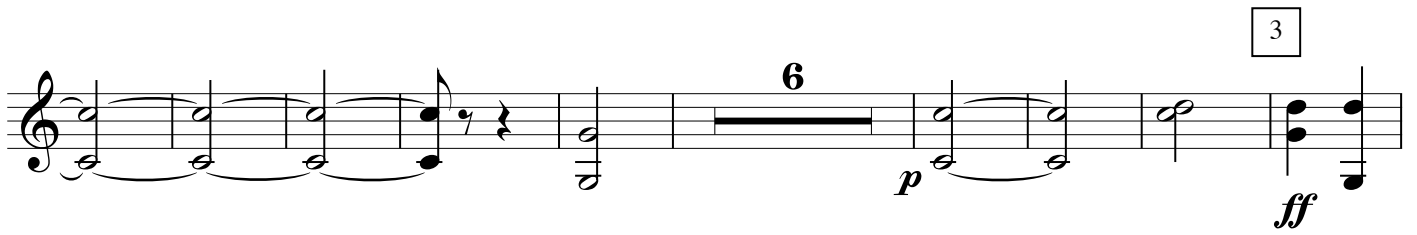
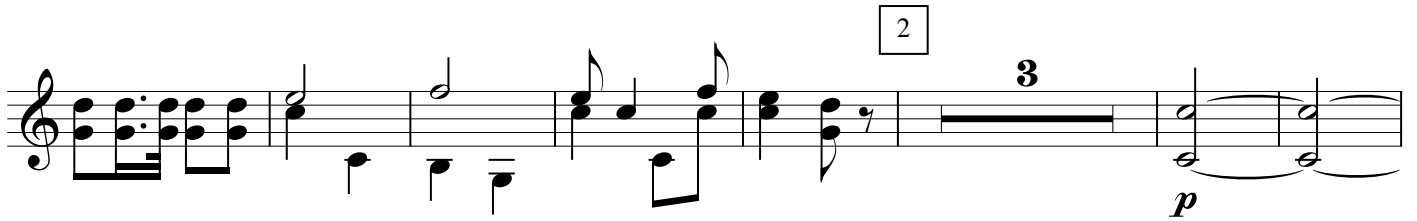
Andante

en Re

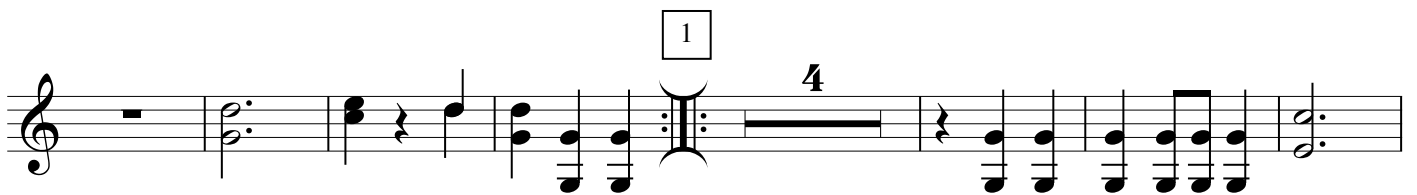


1

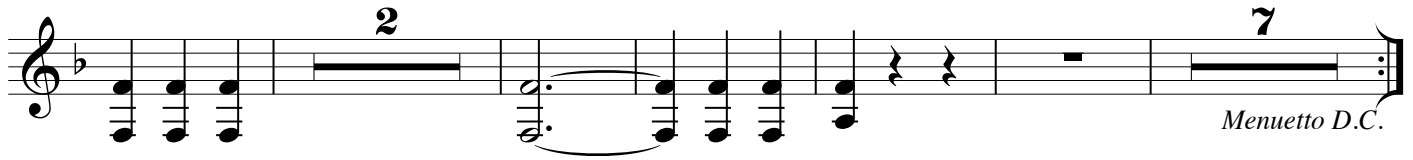
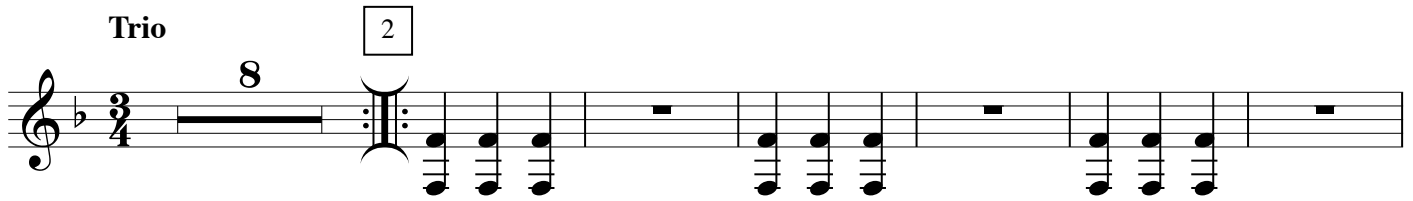
*cresc.*



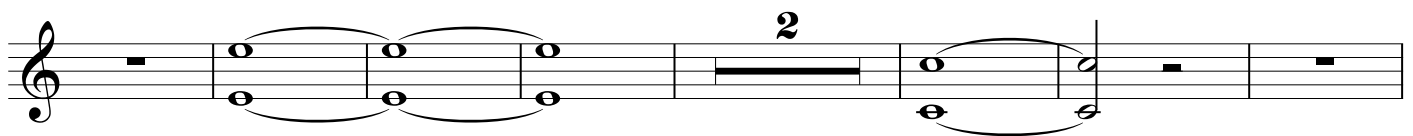
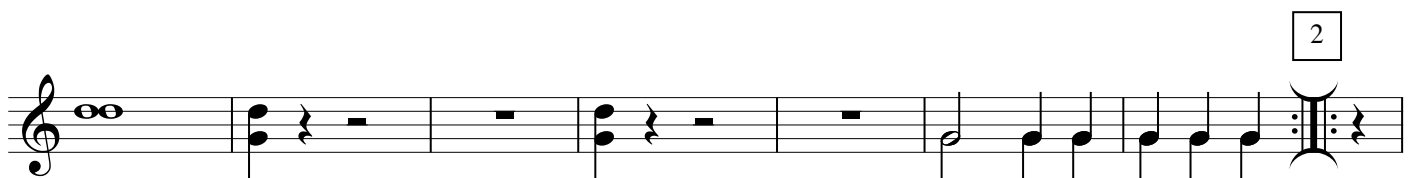
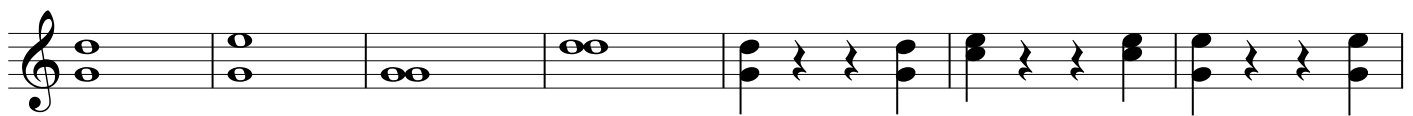
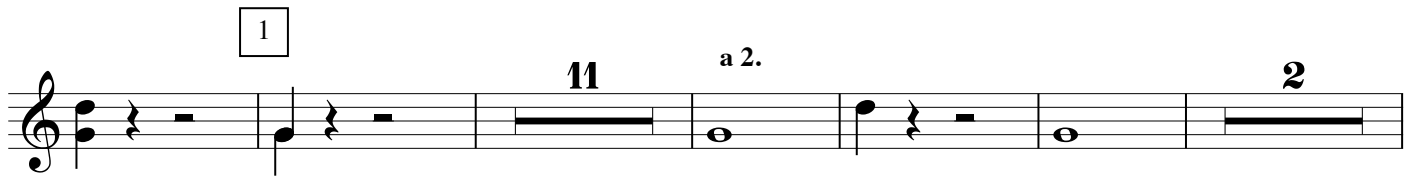
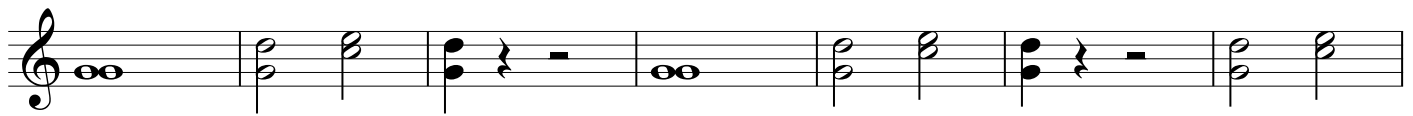
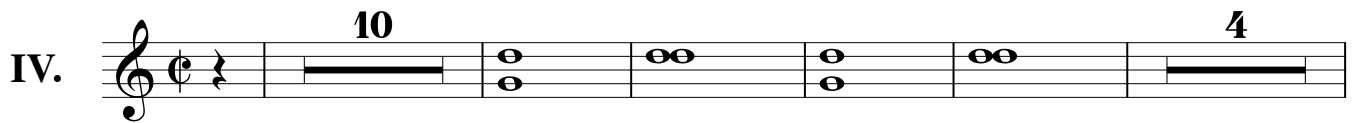
MENUETTO



Trio



Allegro



[illegible]

The musical notation for Example 6-10 consists of a single staff with a treble clef. It begins with a key signature of one sharp (F#). The melody starts on G4 (quarter note), followed by A4 (quarter note), B4 (quarter note), C5 (quarter note), D5 (quarter note), E5 (quarter note), F#5 (quarter note), G5 (quarter note), A5 (quarter note), B5 (quarter note), C6 (half note), and ends with a double bar line. The accompaniment starts on G3 (half note), followed by A3 (half note), B3 (half note), C4 (half note), D4 (half note), E4 (half note), F#4 (half note), G4 (half note), A4 (half note), B4 (half note), C5 (half note), and ends with a double bar line.