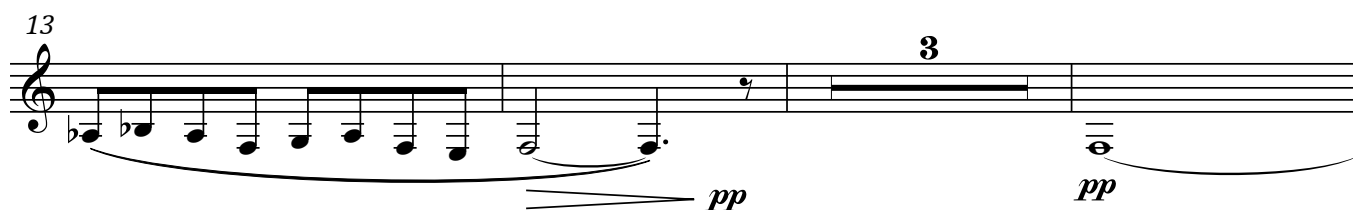
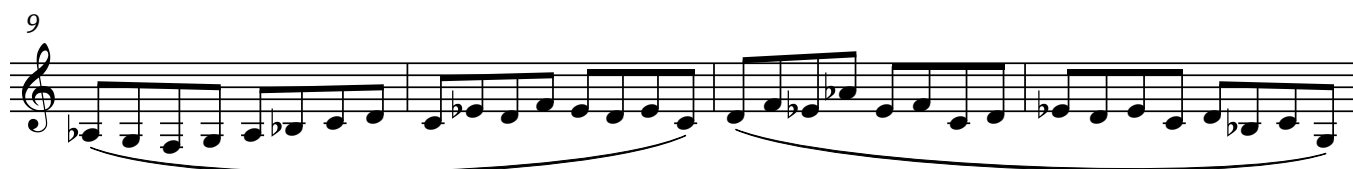
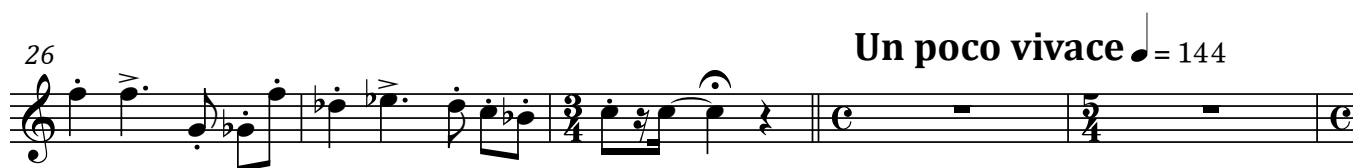


Quintet

I. Parade

Tamás Beischer-Matyó

Allegro ♩ = 126**Moderato** ♩ = 92**Allegro** ♩ = 126**Un poco vivace** ♩ = 144

Clarinet (A)

2

31

mf giocoso

35

38

f

40

44 rall.

Moderato ♩ = 92

p *ppp*

48 **Allegro** ♩ = 126

Allegretto ♩ = 108

f *pp*

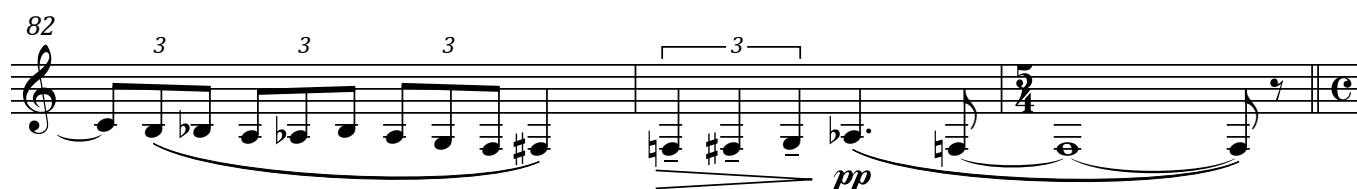
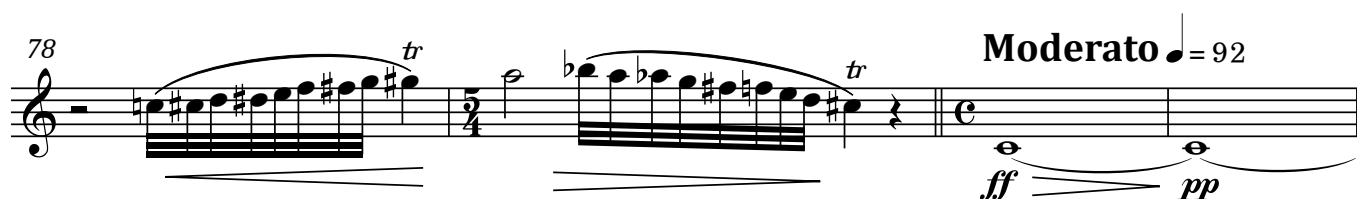
53

56

59

Clarinet (A)

3



Capriccioso ♩ = 80

II. Intrigue



Clarinet (A)

4

9 *ff* *tr♭*

12 *pp* *espr.*

16

22 *pp*

27

32 *ff*

35

37 *fff*

40 *ff*

43 *ff*

46

50 *ff*

56 *ff* *tr*

59 *tr* *rall.* **Poco sostenuto** ♩ = 66 *f* *p*

65 *rall.* **a tempo** ♩ = 80 *mf*

70 *ff*

72 *A*

76

II. Intrigue

Adagio $\text{♩} = 60$

9 p

14 $f > p$

21 pp $f > p$ $f > p$

28 $f > p$ $f > p$ $f > p$ $f > p$

35 $f < f < ff$ espr. ppp

44 $p > ppp$ $p > ppp$ $p > ppp$ poco rit. 3 3

49 a tempo p pp senza espr.

56 rall. poco a poco

63 picc. accel. 6 picc. rall. 6 picc. accel. 6 picc. rall. 6

sempre pp

65 *picc. accel.* *picc. rall.* *picc. accel.* *picc. rall.* *picc. accel.* *picc. rall.*

68 *picc. accel.* *picc. rall.* *picc. accel.* *picc. rall.* *picc. accel.* *picc. rall.*

71 *picc. accel.* *picc. rall.* *accel.* *mp*

76 **Vivacissimo** $\text{♩} = 144$ *ff*

79

82 *tr* *3*

86 *tr*

92 *tr* **subito a tempo** ($\text{♩} = 60$) *fff* *mf* *mf* *p*

98 *rall.* *ppp*

103 **a tempo, ma più sost.** ♩ = 52

8

ppp rigido

117

2 3

p espr. *mf* espr.

128 rall. poco a poco al fine

pp *pppp*

IV. Heavy

Allegro molto vivace ♩ = 168

2

ff

5

8

tr

12

tr

16

tr

21

26

tr

2

12

8

Clarinet (A)

10 $\text{♩} = \text{♩}$.

30 *p*

36 *ff*

39

42

45

47

50 *rall.*-----

53 *a tempo*

57 *pp* senza espr.

61

65 *mol.*

70 *ff*

75

The musical score for Clarinet (A) consists of ten staves of music. The first staff (measures 10-30) begins with a tempo marking of quarter note equals quarter note, followed by a series of eighth and sixteenth notes, and a dynamic marking of *p*. The second staff (measures 30-42) features a series of sixteenth notes with a dynamic marking of *ff*. The third staff (measures 42-50) continues the sixteenth-note pattern. The fourth staff (measures 50-53) includes a *rall.* (rallentando) marking with a dashed line. The fifth staff (measures 53-57) is marked *a tempo* and features a series of half notes and quarter notes. The sixth staff (measures 57-61) is marked *pp* (pianissimo) and *senza espr.* (without expression). The seventh staff (measures 61-65) continues the half-note pattern. The eighth staff (measures 65-70) includes a *mol.* (molto) marking and features a series of half notes. The ninth staff (measures 70-75) is marked *ff* (fortissimo) and features a series of eighth notes. The tenth staff (measures 75-80) continues the eighth-note pattern.

Clarinet (A)

11

V. Fairy Queen

Allegretto gentile ♩ = 108

8 *mf* 2 *mf*

16 *mf* 3 3 3 dolce

21 *mp* *pp*

27 *mf* *p*

33 *mp* 2

40 *p* *p* *pp*

45 2 *p* 3 3 3 *pp*

