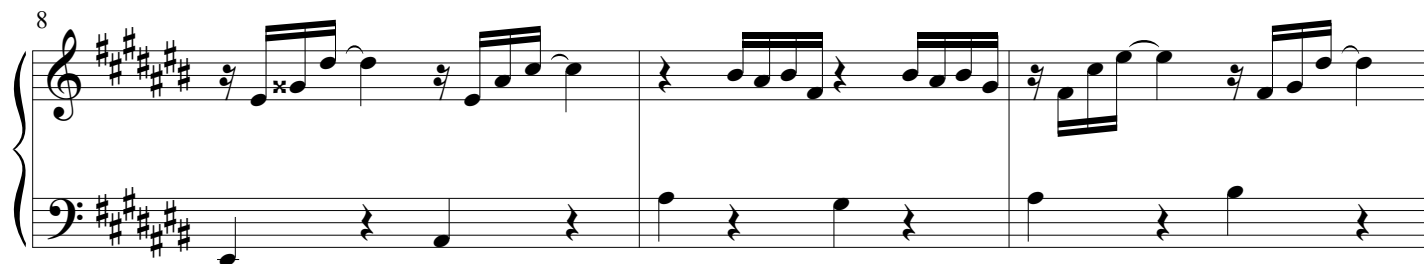
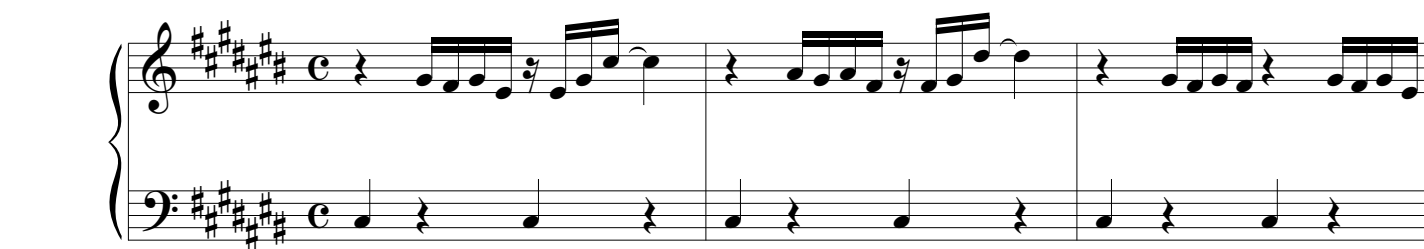


Praeludium et Fuga III

BWV 872

J. SEBASTIAN BACH

ARR. PETER H. BESSELING



17

Measures 17-19. Treble staff: 17: quarter rest, eighth-note beamed pair (F#, G), eighth-note beamed pair (A, B), quarter note C; 18: quarter rest, eighth-note beamed pair (D, E), eighth-note beamed pair (F#, G), quarter note A; 19: quarter rest, eighth-note beamed pair (B, C), eighth-note beamed pair (D, E), quarter note F#. Bass staff: 17: quarter note D, quarter rest; 18: quarter note E, quarter rest; 19: quarter note F#, quarter rest.

20

Measures 20-22. Treble staff: 20: quarter rest, eighth-note beamed pair (F#, G), eighth-note beamed pair (A, B), quarter note C; 21: quarter rest, eighth-note beamed pair (D, E), eighth-note beamed pair (F#, G), quarter note A; 22: quarter rest, eighth-note beamed pair (B, C), eighth-note beamed pair (D, E), quarter note F#. Bass staff: 20: quarter note D, quarter rest; 21: quarter note E, quarter rest; 22: quarter note F#, quarter rest.

23

Measures 23-28. Treble staff: 23: quarter rest, eighth-note beamed pair (F#, G), eighth-note beamed pair (A, B), quarter note C; 24: quarter rest, eighth-note beamed pair (D, E), eighth-note beamed pair (F#, G), quarter note A; 25: quarter rest, eighth-note beamed pair (B, C), eighth-note beamed pair (D, E), quarter note F#. Bass staff: 23: quarter note D, quarter rest; 24: quarter note E, quarter rest; 25: quarter note F#, quarter rest. Measure 28 is a double bar line.

29

Measures 29-36. Treble staff: 29: quarter rest, eighth-note beamed pair (F#, G), eighth-note beamed pair (A, B), quarter note C; 30: quarter rest, eighth-note beamed pair (D, E), eighth-note beamed pair (F#, G), quarter note A; 31: quarter rest, eighth-note beamed pair (B, C), eighth-note beamed pair (D, E), quarter note F#. Bass staff: 29: quarter note D, quarter rest; 30: quarter note E, quarter rest; 31: quarter note F#, quarter rest. Measure 36 is a double bar line.

37

Measures 37-43. Treble staff: 37: quarter rest, eighth-note beamed pair (F#, G), eighth-note beamed pair (A, B), quarter note C; 38: quarter rest, eighth-note beamed pair (D, E), eighth-note beamed pair (F#, G), quarter note A; 39: quarter rest, eighth-note beamed pair (B, C), eighth-note beamed pair (D, E), quarter note F#. Bass staff: 37: quarter note D, quarter rest; 38: quarter note E, quarter rest; 39: quarter note F#, quarter rest. Measure 43 is a double bar line.

44

Measures 44-50. Treble staff: 44: quarter rest, eighth-note beamed pair (F#, G), eighth-note beamed pair (A, B), quarter note C; 45: quarter rest, eighth-note beamed pair (D, E), eighth-note beamed pair (F#, G), quarter note A; 46: quarter rest, eighth-note beamed pair (B, C), eighth-note beamed pair (D, E), quarter note F#. Bass staff: 44: quarter note D, quarter rest; 45: quarter note E, quarter rest; 46: quarter note F#, quarter rest. Measure 50 is a double bar line.

Fuga

4

8

11

14

17

21

Measures 21-22 of the musical score. The key signature is F# major (three sharps). Measure 21 features a complex melodic line in the right hand with many beamed sixteenth notes and a descending eighth-note pattern in the left hand. Measure 22 continues the melodic development in the right hand with a half-note rest, while the left hand plays a steady eighth-note accompaniment.

23

Measures 23-24 of the musical score. Measure 23 shows a more active right hand with sixteenth-note runs and a left hand with a steady eighth-note accompaniment. Measure 24 features a half-note rest in the right hand and a more complex, moving line in the left hand.

26

Measures 26-27 of the musical score. Measure 26 has a right hand with a half-note rest followed by a sixteenth-note run, and a left hand with a steady eighth-note accompaniment. Measure 27 features a half-note rest in the right hand and a long, sustained half-note in the left hand.

29

Measures 29-30 of the musical score. Measure 29 shows a right hand with a half-note rest and a left hand with a half-note. Measure 30 features a half-note rest in the right hand and a more complex, moving line in the left hand.

31

Measures 31-32 of the musical score. Measure 31 has a right hand with a half-note rest and a left hand with a half-note. Measure 32 features a half-note rest in the right hand and a more complex, moving line in the left hand.

32

Musical score for Praeludium et Fuga III - PIANO II, page 5. The score is in G major (one sharp) and 3/4 time. It consists of two staves. The upper staff begins at measure 32 with a treble clef and contains a melodic line with eighth and sixteenth notes, including a trill marked with an 'x'. The lower staff begins with a bass clef and contains a bass line with eighth and sixteenth notes, followed by a whole note chord in the final measure. A brace under the last three measures of the lower staff indicates a single breath mark.