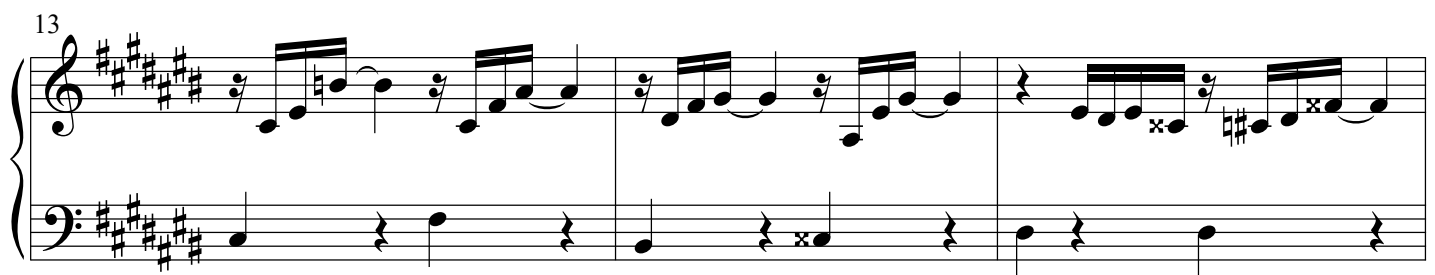
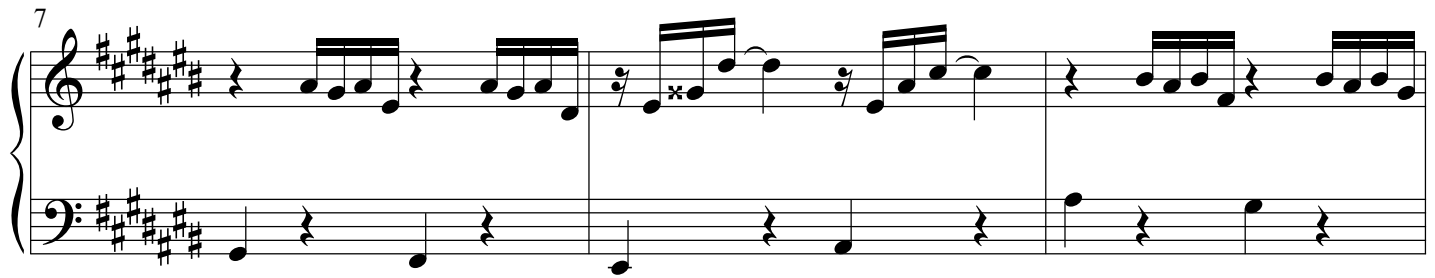
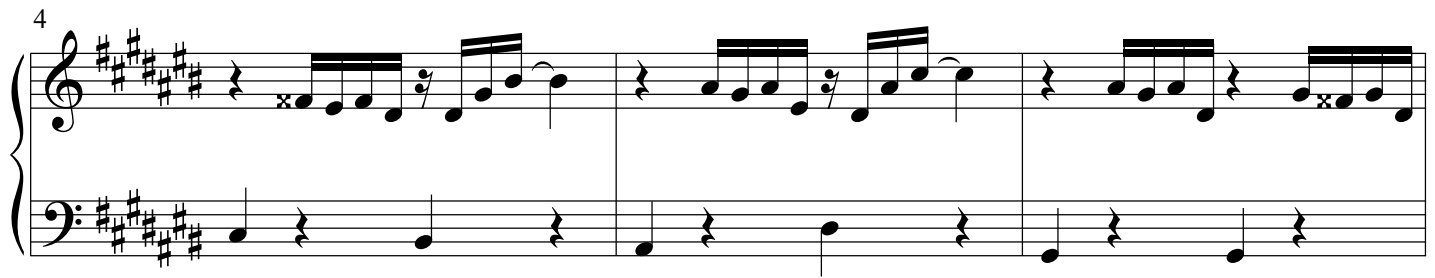
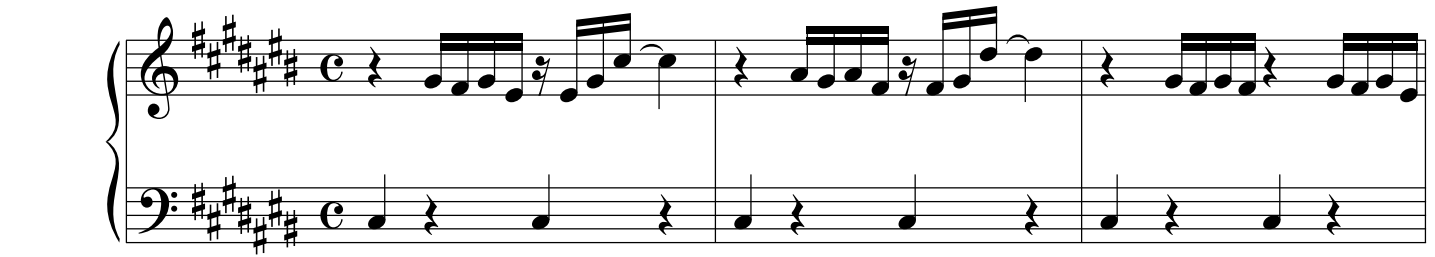


**Praeludium et Fuga III**

BWV 872

J. SEBASTIAN BACH

PETER H. BESSELING



16

Measures 16-18 of the Praeludium et Fuga III - PIANO II. The music is in G major (one sharp) and 3/4 time. The right hand features a melodic line with eighth and sixteenth notes, while the left hand provides a harmonic accompaniment with quarter and eighth notes.

19

Measures 19-21 of the Praeludium et Fuga III - PIANO II. The right hand continues the melodic development with eighth notes and rests, while the left hand maintains a steady accompaniment.

22

Measures 22-24 of the Praeludium et Fuga III - PIANO II. The right hand shows more complex rhythmic patterns with eighth and sixteenth notes, including some accidentals. The left hand continues with a simple accompaniment.

25

Measures 25-32 of the Praeludium et Fuga III - PIANO II. The right hand features a series of eighth notes and rests, with some dynamic markings like accents and staccato. The left hand has a more active role with eighth and sixteenth notes.

33

Measures 33-39 of the Praeludium et Fuga III - PIANO II. The right hand continues with eighth notes and rests, while the left hand has a more complex accompaniment with eighth and sixteenth notes.

40

Measures 40-44 of the Praeludium et Fuga III - PIANO II. The right hand features a series of eighth notes and rests, with some dynamic markings like accents and staccato. The left hand has a more active role with eighth and sixteenth notes.

45

**Fuga**

4

7

10

13

15

Measures 15-16 of the Praeludium et Fuga III for Piano II. The key signature is F# major (three sharps). Measure 15 features a complex bass line with a trill on the first beat and a series of sixteenth-note runs. Measure 16 continues the bass line with more sixteenth-note runs and a trill on the second beat.

17

Measures 17-19 of the Praeludium et Fuga III for Piano II. Measure 17 has a treble line with a half note followed by eighth notes and a bass line with eighth notes. Measure 18 continues the treble line with eighth notes and the bass line with eighth notes. Measure 19 features a treble line with a half note and a bass line with eighth notes.

20

Measures 20-22 of the Praeludium et Fuga III for Piano II. Measure 20 has a treble line with eighth notes and a bass line with eighth notes. Measure 21 continues the treble line with eighth notes and the bass line with eighth notes. Measure 22 features a treble line with a half note and a bass line with eighth notes.

23

Measures 23-25 of the Praeludium et Fuga III for Piano II. Measure 23 has a treble line with eighth notes and a bass line with eighth notes. Measure 24 continues the treble line with eighth notes and the bass line with eighth notes. Measure 25 features a treble line with a half note and a bass line with eighth notes.

26

Measures 26-27 of the Praeludium et Fuga III for Piano II. Measure 26 has a treble line with eighth notes and a bass line with eighth notes. Measure 27 continues the treble line with eighth notes and the bass line with eighth notes.

28

Measures 28-29 of the Praeludium et Fuga III for Piano II. Measure 28 has a treble line with eighth notes and a bass line with eighth notes. Measure 29 continues the treble line with eighth notes and the bass line with eighth notes.

30

31

33