

Orchestra 2
Bassoon

Louis Spohr
(1784-1859)

Symphony No.7
Op. 121

I. Kinderwelt

Louis Spohr
(1784-1859)

Introduzione. Adagio $\text{♩}=108$ poco rit. Allegretto $\text{♩}=138$

13 6

24 Vln.1 *f* 4

35 Vln.1 *f* *p*

44 **A** 3 *f* *pp* *f*

57

64 *f*

70 **B**

77 2 17 *p* Fl. *3*

101

110 *fp* **C** *p* *fp* *p* *fp* *p* *fp* *fp* *fp* 6 Vln.1 *3*

122 *fp* *f* *p* Vln.1 1.

131 2. 2 Vln.1 *f* *> p*

142 *sfz > pp* *sfz > pp* *p* 2

154 D *f*

162 6 Vln.1 6 Vln.1

180 *f* 4 Vln.1

192 *f* *> p* *f* *f*

203 *sfz pp* *sfz pp* *f*

213 E

220 *p* 2

227 18

245 Fl. *fp* *p* *fp*

250 *p* *fp* *p* *fp* *fp* *fp* *fp*

257 **F** *f* *f*³

268 *f* *f*

275 *arco* *p* *cresc.* *f* *f* *p*

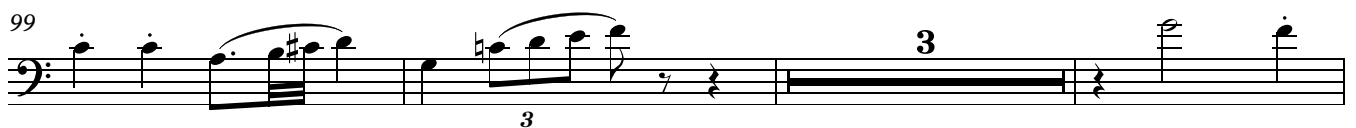
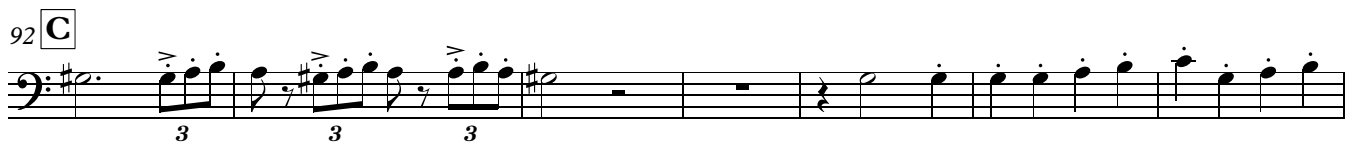
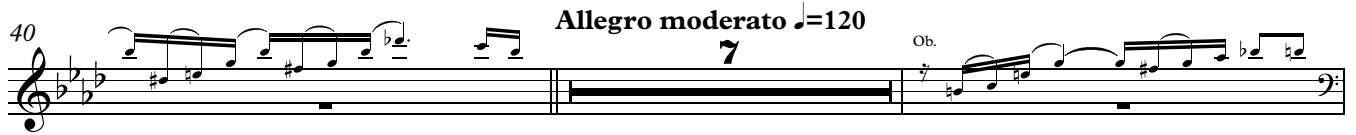
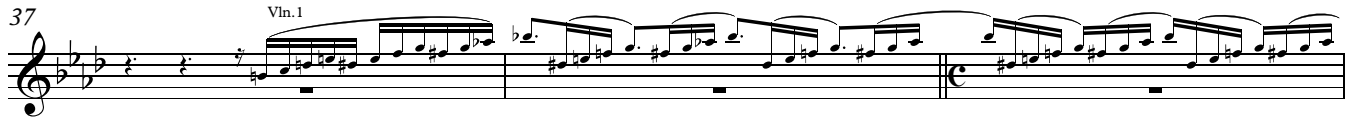
II. Zeit der Leidenschaften

1 **Larghetto** (♩=96) *p*

7 *cresc.* *dim.* *p* *cresc.*

15 *p*

33 *p*

poco a poco stringendo

119 Ob. *p*

125 *f* 3 3 3 3

131 **E** 2 Solo Vln. 1 *f*

139 *p*

146 *cresc.* *p* 4 Vln. 1

153

156 7 Ob. *(p)* *cresc.* *(f)* *p* *f*

167 **F** *p*

171 12 Fl.

186 5 Vln. 1

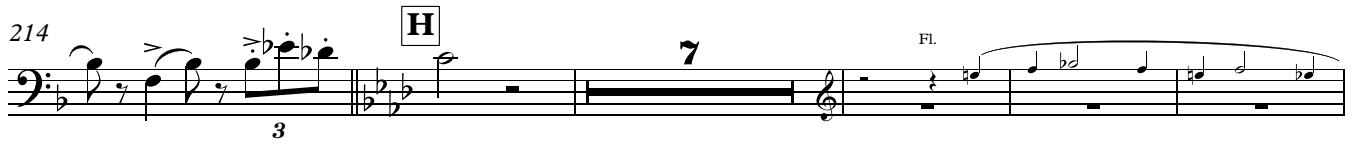
196 **G** *ff* 3 3 3

201 3

208



214



226



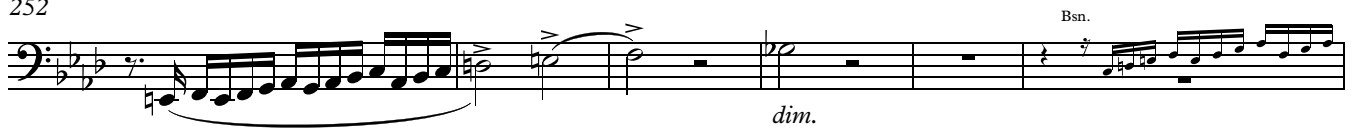
236



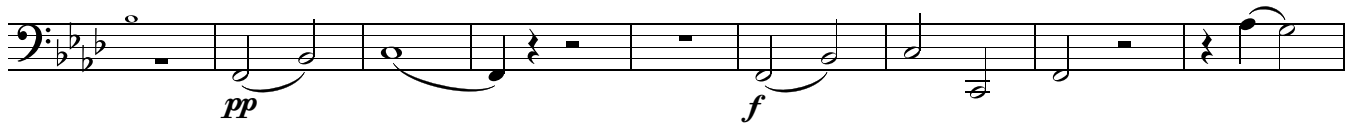
242



252



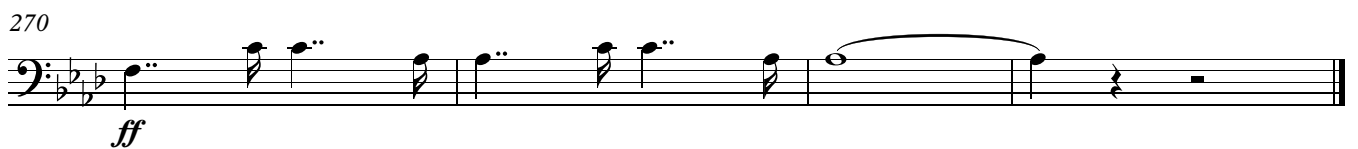
258



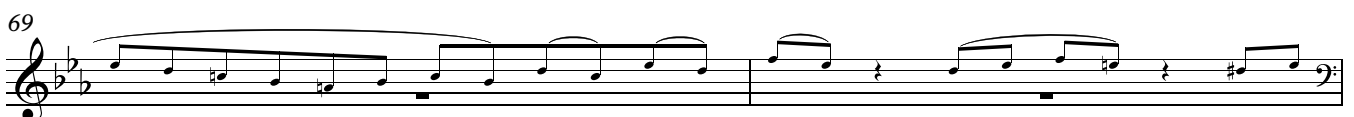
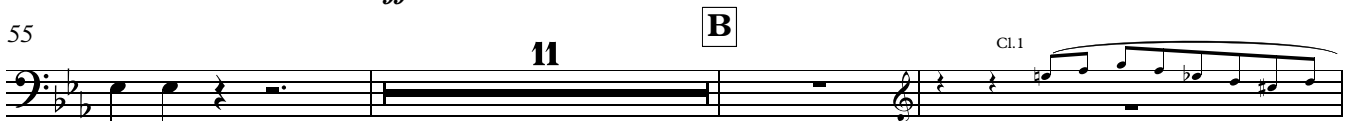
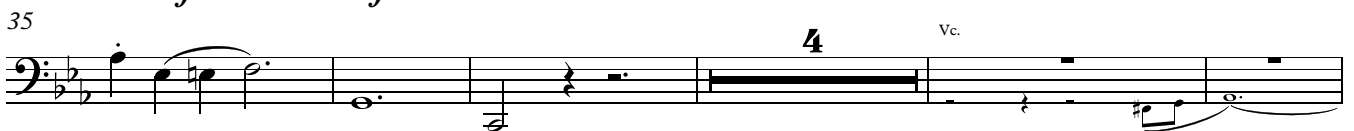
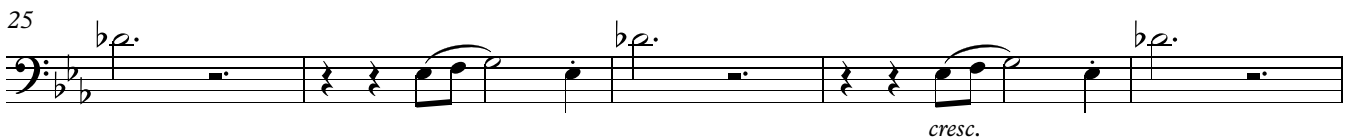
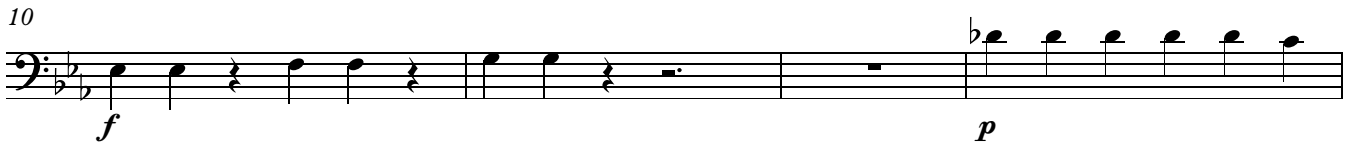
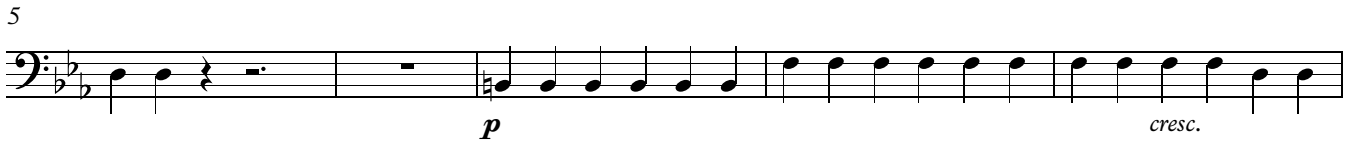
267



270



III. Endlicher Sieg des Göttlichen

1 Presto $\text{♩} = 96$ 

71 *p* *cresc.*

78 *f*

84 *p*

91 *cresc. sfz p*

97 **C** *cresc. f*

102 *pp* 8 Ob.

114 Fl. *pp*

120 2 *pp*

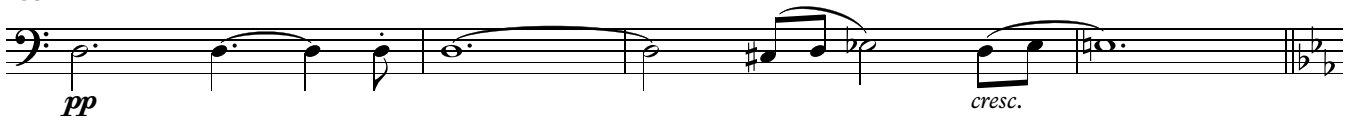
128

133 2 Fl.

139 **D** *tr. pp cresc.*

144 *f* 5

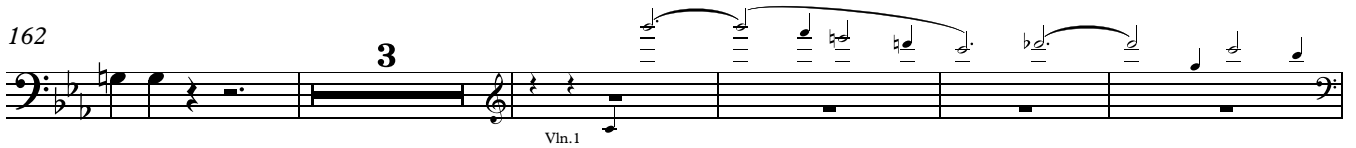
153



157



162



170

E

175



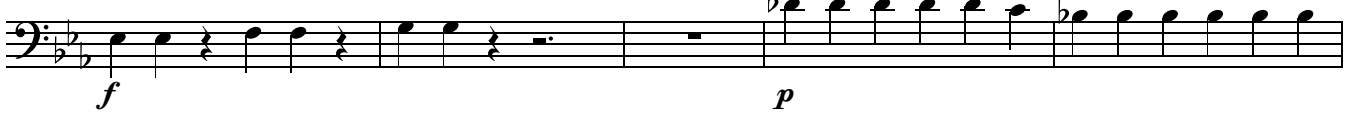
183



188



193



198

F

202



207

p *f* *p*

213

f *p* *fp*

219

p

223

cresc. *f*

227 **G**

pp **29**

259 Ob.

265 **H**

pp

271

4 *p* *cresc.* *fp* *<*

281

fp *< fp* *cresc.* **2** Ob.

289

pp

292

15 **2** **12** **8**

310 Adagio (♩=132)

Vln. 1

