

Flute

Trio Sonata No. 5

BWV 529

Johann Sebastian Bach
(arr. H. Kamioka)

Allegro

5

9

13

17

21

25

29

33

37

41

46

50

54

58

62

66

70

74

78

82

86

90

95

99

103

108

112

116

121

126

130

The image displays a page of musical notation for the Flute part of Bach's Trio Sonata No. 5, BWV 529. The page contains ten staves of music, each beginning with a measure number. The key signature is D major, indicated by two sharps (F# and C#). The notation is in treble clef. The music consists of eighth and sixteenth notes, often beamed together, and includes various rests and accidentals (sharps and naturals). The staves are numbered 86, 90, 95, 99, 103, 108, 112, 116, 121, 126, and 130, indicating the starting measure for each system.

134

138

142

147

151

Largo

3

5

7

10

12

14

17

19

21

24

27

29

31

34

36

39

42

44

46

48

50

52

Allegro

8

15

22



28



35



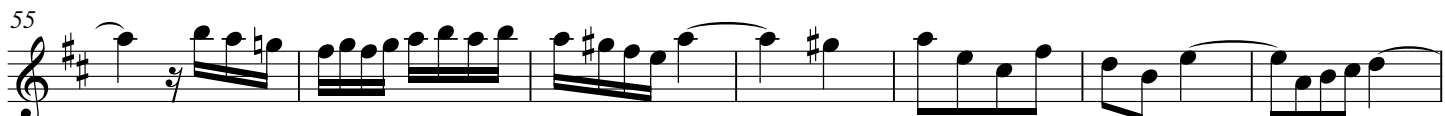
41



48



55



62



69



76



83



90



96

102

108

114

120

126

132

138

144

150

157

This image shows a page of a musical score for the Flute part of Bach's Trio Sonata No. 5, BWV 529. The page contains ten staves of music, each starting with a measure number. The key signature is one sharp (F#), and the time signature is 3/4. The music is written in a single system. The notation includes various note values, rests, and slurs. The first staff (96) begins with a treble clef and a key signature of one sharp. The subsequent staves continue the melodic line, featuring a variety of rhythmic patterns and articulation. The final staff (157) ends with a double bar line and a repeat sign.