

Preludium XXIV

Gr.: Cornet
Ch.: Diap., Flute & Princip.

Sir William Herschel
1738 - 1822

The musical score for Preludium XXIV is written for two parts: Gr. (Cornet) and Ch. (Diapason, Flute, and Princip). The piece is in C major and 4/4 time. It consists of 16 measures. The Gr. part features a melodic line with trills and grace notes, while the Ch. part provides a harmonic accompaniment with sustained chords and moving bass lines. The score is divided into six systems, each containing two staves. The first system starts with a treble clef for the Gr. part and a bass clef for the Ch. part. The second system begins with a measure rest for the Ch. part. The third system features a long sustained chord in the Ch. part. The fourth system continues the melodic development in the Gr. part. The fifth system includes a trill in the Gr. part. The sixth system concludes the piece with a final cadence in both parts.

18

Gr.

(tr)

22

(tr)

Ch.

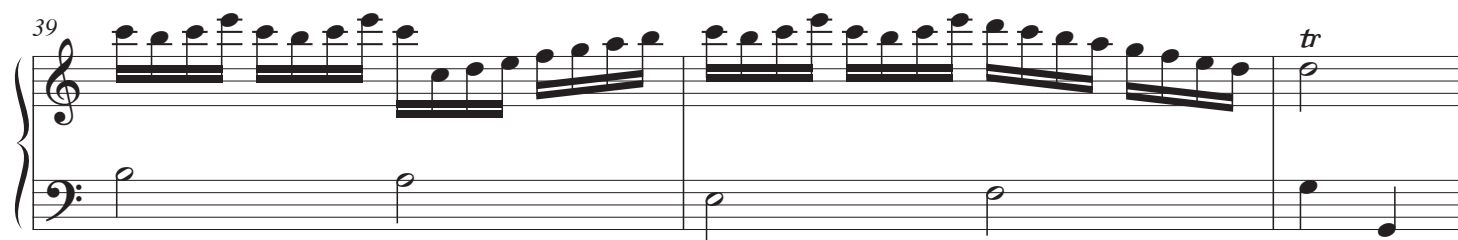
25

27

30

tr

Detailed description: This page contains five systems of musical notation for piano. Each system consists of a grand staff (treble and bass clefs).
- System 1 (Measures 18-21): Measure 18 has a treble staff with a triplet of eighth notes and a bass staff with a whole rest. Measure 19 has a treble staff with a triplet of eighth notes and a bass staff with a half note. Measure 20 has a treble staff with a triplet of eighth notes and a bass staff with a half note. Measure 21 has a treble staff with a triplet of eighth notes and a bass staff with a half note.
- System 2 (Measures 22-24): Measure 22 has a treble staff with a triplet of eighth notes and a bass staff with a whole rest. Measure 23 has a treble staff with a triplet of eighth notes and a bass staff with a half note. Measure 24 has a treble staff with a triplet of eighth notes and a bass staff with a half note.
- System 3 (Measures 25-26): Measure 25 has a treble staff with a triplet of eighth notes and a bass staff with a half note. Measure 26 has a treble staff with a triplet of eighth notes and a bass staff with a half note.
- System 4 (Measures 27-29): Measure 27 has a treble staff with a triplet of eighth notes and a bass staff with a half note. Measure 28 has a treble staff with a triplet of eighth notes and a bass staff with a half note. Measure 29 has a treble staff with a triplet of eighth notes and a bass staff with a half note.
- System 5 (Measures 30-32): Measure 30 has a treble staff with a triplet of eighth notes and a bass staff with a half note. Measure 31 has a treble staff with a triplet of eighth notes and a bass staff with a half note. Measure 32 has a treble staff with a triplet of eighth notes and a bass staff with a half note.



(* *Sic.*)

