

BWV 138

1.

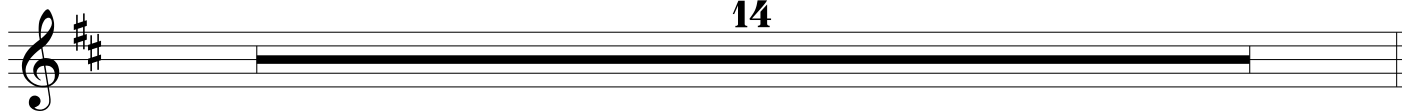
5
10
14
19
24
29
37
45
50

2. Recitativo e Coro

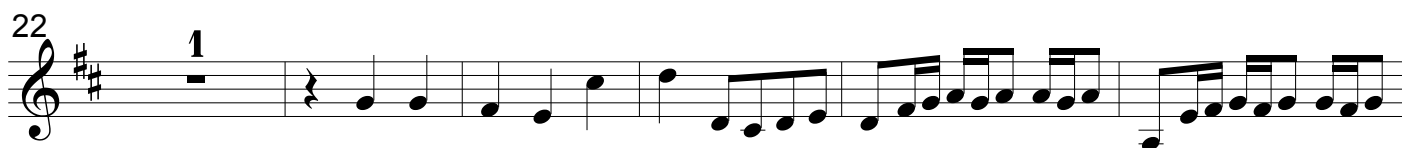
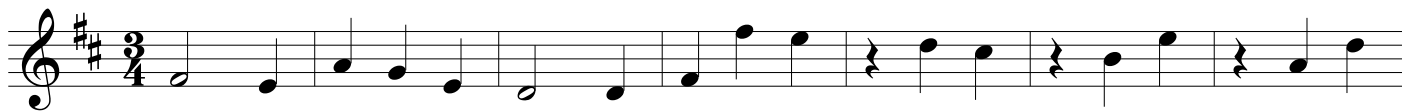
11
16
22
29
33
50

3. Recitativo

14



4. Aria



76

83

89

95

101

106

113

120

126

133

139

152

159

5. Recitativo

6. Choral

3

5

7

10

13

15

17

20

22

26

4

28



30

32

34

36

38

40

42

45

Detailed description: This image shows a page of musical notation for a single melodic line in treble clef. The key signature is two sharps (F# and C#), and the time signature is 3/4. The notation is organized into nine systems, each starting with a measure number. Measures 28-31: Measure 28 features a long, sweeping eighth-note scale from G4 to D5. Measures 30-31 continue with eighth-note patterns and include repeat signs. Measures 32-33: Measure 32 begins with a quarter rest followed by eighth-note runs. Measure 33 continues with eighth-note patterns. Measures 34-35: Measure 34 contains two eighth-note runs. Measure 35 features a descending eighth-note scale. Measures 36-37: Measure 36 starts with a quarter rest and eighth-note runs. Measure 37 continues with eighth-note patterns. Measures 38-39: Measure 38 contains two eighth-note runs. Measure 39 continues with eighth-note patterns. Measures 40-41: Measure 40 begins with a quarter rest and eighth-note runs. Measure 41 continues with eighth-note patterns. Measures 42-43: Measure 42 features a descending eighth-note scale. Measure 43 continues with eighth-note patterns. Measures 44-45: Measure 44 contains two eighth-note runs. Measure 45 concludes the passage with a quarter rest.