

Niccolai Rimsky-Korsakov
Symphony No. 2, Op. 9 (Antar)

I.

TIMPANI.

Largo.

pp

dim.

1 3

pp

dim.

2 4

pp

dim.

3 4

pp

dim.

4 Allegro. 16 5 14 6 20 7 14 8 16

4

4

Detailed description: This block contains the musical notation for the Timpani part of the first movement of Rimsky-Korsakov's Symphony No. 2, Op. 9 (Antar). The tempo is marked 'Largo.' and the dynamics range from 'pp' (pianissimo) to 'dim.' (diminuendo). The notation is in bass clef with a 4/4 time signature. It features several triplet markings (3) and repeat signs. The score is divided into measures, with some measures containing multiple notes. The final measure of the Largo section is marked with a double bar line and a 4/4 time signature. The tempo then changes to 'Allegro.' for measures 16 through 20, which are marked with a 3/4 time signature. The measures are numbered 4, 5, 6, 7, and 8, with corresponding measure numbers 16, 14, 20, 14, and 16 written above them.

TIMPANI.

9 *Largo in tempo* 4 10 *Allegretto.* 20 11 12 12 16 13 4

14 14 15 16 16 4

17 18 18 *Adagio. in tempo* 1

19 *Allegretto (Tempo I)* 12 20 5

21 *Largo.* 4

22 3

23 *Allegro.* 16

24 15

25 2 26 2

pp *ppp morendo* *ppp* *mor.* *pp* *dimin.* *f* *dimin.* *f* *dim.* *p* *f*

The first staff of music is written on a five-line bass clef. It contains a sequence of eighth notes, each preceded by a grace note. The notes are: G2 (below the staff), A2, B2, C3, D3, E3, F3, G3, A3, B3, C4, D4, E4, F4, G4, A4, B4, C5, D5, E5, F5, G5, A5, B5, C6, D6, E6, F6, G6, A6, B6, C7, D7, E7, F7, G7, A7, B7, C8, D8, E8, F8, G8, A8, B8, C9, D9, E9, F9, G9, A9, B9, C10, D10, E10, F10, G10, A10, B10, C11, D11, E11, F11, G11, A11, B11, C12, D12, E12, F12, G12, A12, B12, C13, D13, E13, F13, G13, A13, B13, C14, D14, E14, F14, G14, A14, B14, C15, D15, E15, F15, G15, A15, B15, C16, D16, E16, F16, G16, A16, B16, C17, D17, E17, F17, G17, A17, B17, C18, D18, E18, F18, G18, A18, B18, C19, D19, E19, F19, G19, A19, B19, C20, D20, E20, F20, G20, A20, B20, C21, D21, E21, F21, G21, A21, B21, C22, D22, E22, F22, G22, A22, B22, C23, D23, E23, F23, G23, A23, B23, C24, D24, E24, F24, G24, A24, B24, C25, D25, E25, F25, G25, A25, B25, C26, D26, E26, F26, G26, A26, B26, C27, D27, E27, F27, G27, A27, B27, C28, D28, E28, F28, G28, A28, B28, C29, D29, E29, F29, G29, A29, B29, C30, D30, E30, F30, G30, A30, B30, C31, D31, E31, F31, G31, A31, B31, C32, D32, E32, F32, G32, A32, B32, C33, D33, E33, F33, G33, A33, B33, C34, D34, E34, F34, G34, A34, B34, C35, D35, E35, F35, G35, A35, B35, C36, D36, E36, F36, G36, A36, B36, C37, D37, E37, F37, G37, A37, B37, C38, D38, E38, F38, G38, A38, B38, C39, D39, E39, F39, G39, A39, B39, C40, D40, E40, F40, G40, A40, B40, C41, D41, E41, F41, G41, A41, B41, C42, D42, E42, F42, G42, A42, B42, C43, D43, E43, F43, G43, A43, B43, C44, D44, E44, F44, G44, A44, B44, C45, D45, E45, F45, G45, A45, B45, C46, D46, E46, F46, G46, A46, B46, C47, D47, E47, F47, G47, A47, B47, C48, D48, E48, F48, G48, A48, B48, C49, D49, E49, F49, G49, A49, B49, C50, D50, E50, F50, G50, A50, B50, C51, D51, E51, F51, G51, A51, B51, C52, D52, E52, F52, G52, A52, B52, C53, D53, E53, F53, G53, A53, B53, C54, D54, E54, F54, G54, A54, B54, C55, D55, E55, F55, G55, A55, B55, C56, D56, E56, F56, G56, A56, B56, C57, D57, E57, F57, G57, A57, B57, C58, D58, E58, F58, G58, A58, B58, C59, D59, E59, F59, G59, A59, B59, C60, D60, E60, F60, G60, A60, B60, C61, D61, E61, F61, G61, A61, B61, C62, D62, E62, F62, G62, A62, B62, C63, D63, E63, F63, G63, A63, B63, C64, D64, E64, F64, G64, A64, B64, C65, D65, E65, F65, G65, A65, B65, C66, D66, E66, F66, G66, A66, B66, C67, D67, E67, F67, G67, A67, B67, C68, D68, E68, F68, G68, A68, B68, C69, D69, E69, F69, G69, A69, B69, C70, D70, E70, F70, G70, A70, B70, C71, D71, E71, F71, G71, A71, B71, C72, D72, E72, F72, G72, A72, B72, C73, D73, E73, F73, G73, A73, B73, C74, D74, E74, F74, G74, A74, B74, C75, D75, E75, F75, G75, A75, B75, C76, D76, E76, F76, G76, A76, B76, C77, D77, E77, F77, G77, A77, B77, C78, D78, E78, F78, G78, A78, B78, C79, D79, E79, F79, G79, A79, B79, C80, D80, E80, F80, G80, A80, B80, C81, D81, E81, F81, G81, A81, B81, C82, D82, E82, F82, G82, A82, B82, C83, D83, E83, F83, G83, A83, B83, C84, D84, E84, F84, G84, A84, B84, C85, D85, E85, F85, G85, A85, B85, C86, D86, E86, F86, G86, A86, B86, C87, D87, E87, F87, G87, A87, B87, C88, D88, E88, F88, G88, A88, B88, C89, D89, E89, F89, G89, A89, B89, C90, D90, E90, F90, G90, A90, B90, C91, D91, E91, F91, G91, A91, B91, C92, D92, E92, F92, G92, A92, B92, C93, D93, E93, F93, G93, A93, B93, C94, D94, E94, F94, G94, A94, B94, C95, D95, E95, F95, G95, A95, B95, C96, D96, E96, F96, G96, A96, B96, C97, D97, E97, F97, G97, A97, B97, C98, D98, E98, F98, G98, A98, B98, C99, D99, E99, F99, G99, A99, B99, C100, D100, E100, F100, G100, A100, B100, C101, D101, E101, F101, G101, A101, B101, C102, D102, E102, F102, G102, A102, B102, C103, D103, E103, F103, G103, A103, B103, C104, D104, E104, F104, G104, A104, B104, C105, D105, E105, F105, G105, A105, B105, C106, D106, E106, F106, G106, A106, B106, C107, D107, E107, F107, G107, A107, B107, C108, D108, E108, F108, G108, A108, B108, C109, D109, E109, F109, G109, A109, B109, C110, D110, E110, F110, G110, A110, B110, C111, D111, E111, F111, G111, A111, B111, C112, D112, E112, F112, G112, A112, B112, C113, D113, E113, F113, G113, A113, B113, C114, D114, E114, F114, G114, A114, B114, C115, D115, E115, F115, G115, A115, B115, C116, D116, E116, F116, G116, A116, B116, C117, D117, E117, F117, G117, A117, B117, C118, D118, E118, F118, G118, A118, B118, C119, D119, E119, F119, G119, A119, B119, C120, D120, E120, F120, G120, A120, B120, C121, D121, E121, F121, G121, A121, B121, C122, D122, E122, F122, G122, A122, B122, C123, D123, E123, F123, G123, A123, B123, C124, D124, E124, F124, G124, A124, B124, C125, D125, E125, F125, G125, A125, B125, C126, D126, E126, F126, G126, A126, B126, C127, D127, E127, F127, G127, A127, B127, C128, D128, E128, F128, G128, A128, B128, C129, D129, E129, F129, G129, A129, B129, C130, D130, E130, F130, G130, A130, B130, C131, D131, E131, F131, G131, A131, B131, C132, D132, E132, F132, G132, A132, B132, C133, D133, E133, F133, G133, A133, B133, C134, D134, E134, F134, G134, A134, B134, C135, D135, E135, F135, G135, A135, B135, C136, D136, E136, F136, G136, A136, B136, C137, D137, E137, F137, G137, A137, B137, C138, D138, E138, F138,

The first system of the bass line consists of a series of eighth notes, each followed by a trill (marked with a 'tr' symbol). The notes are G2, F2, E2, D2, C2, B1, A1, and G1. The final note, G1, is a half note. The system concludes with a double bar line.

28 Meno mosso. 8 allarg. tr 29 Tempo I. 14 30 18

p cresc. *f*

Musical score for the bass line of "The Rose Tree". The key signature is one flat (B-flat). The score is divided into two systems. The first system contains measures 1 through 4. The second system contains measures 5 through 8, with a measure number "32" in a box above the first measure of this system. The bass line features a series of eighth notes in measures 1 and 2, followed by a series of eighth notes in measures 3 and 4. In the second system, measures 5 through 8 feature a series of eighth notes, with a *tr* (trill) marking above each measure. The dynamics *f* and *pp* are indicated below the notes in measures 3 and 4 respectively.

A single staff of music in bass clef. The key signature has one flat (B-flat). The melody consists of eighth and sixteenth notes, with rests. The notes are: G2 (quarter), A2-B2 (eighths), C3 (quarter), B2-A2 (eighths), G2 (quarter), F2 (half), E2 (quarter), D2 (half), C2 (quarter), B1 (half), A1 (quarter), G1 (half), F1 (quarter), E1 (half), D1 (quarter), C1 (half).

The first staff of music is written on a five-line bass clef. It contains a sequence of notes: a quarter note G2, an eighth note F2, a quarter note E2, an eighth note D2, a quarter note C2, an eighth note B1, a quarter note A1, and an eighth note G1. The notes are grouped into pairs of eighth notes, with a quarter rest following each pair. The notes are written on the lines and spaces of the staff, with the G1 note on the first line and the A1 note on the first space.

34

tr tr tr tr

f

Measures 34-37 of the musical score. Measure 34 features a bass clef and a series of eighth notes. Measures 35-37 are marked with a box containing the number 34 and feature a forte (*f*) dynamic. The notation includes trills (tr) and a series of notes connected by a slur.

TIMPANI.

4

pp

cresc.

f

ff

35

1 3

pp

cresc.

36

f pp

III.

37 Allegro risoluto.

3

f

3

f

tr

tr

1 **38** 3

2

p

p *f*

4 **39** 12 **40** 8 **41** 8

42 8 **43**

p

44 8 **45** 16 **46** 12 **47** 6

TIMPANI.

48 9 49

p

2 50 8 *f* *f*

51 *p*

52 3 *f*

IV.

53 Allegretto. 14 54 Adagio. 30 55 4 3

pp

4 56 7 57 9 58 5 59 11 60 14

TIMPANI.

61 12 62 Soli 1-12 *pp*

63 8 64 8 65 10 *rit.* 1 66 *a tempo* 3 *rit.* 1

a tempo 2 67 6 68 2 *p*

4 *pp*

2 69

2 *tacet al fine.*

NICOLAI Rimsky-Korsakov
Symphony No. 2, Op. 9 (Antar)

PIATTI e CASSA.

I

Largo. 12 **1** 12 **2** 8 **3** 8

4 **Allegro.** 16 **5** 14 **6** 1 *Pag.*

15 **7** *Cassa. pp*

f (Colla bacchetta.)

8 *mf tr dim.*

pp **9** **Largo.** *in tempo* **10** **Allegretto.** *tacent.*

PIATTI e CASSA.

II

23

Allegro.



24

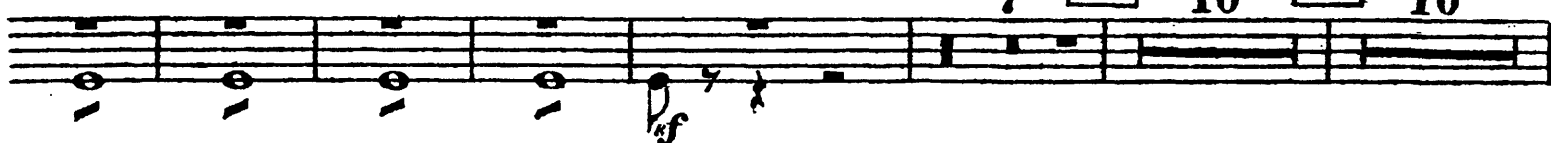


25

10

26

10



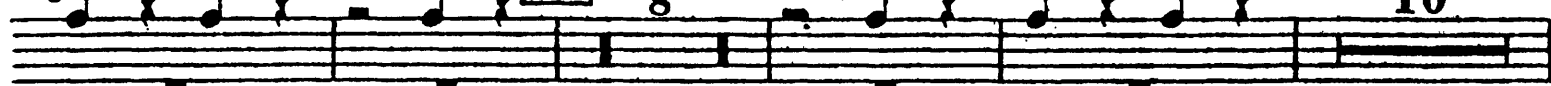
Piatti. (Colla bacchetta.)

27

8

f

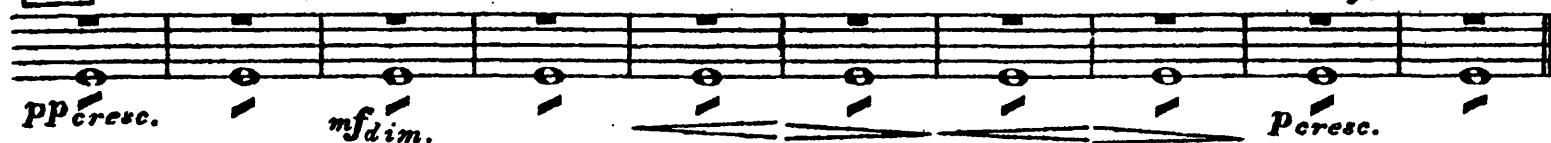
10



28

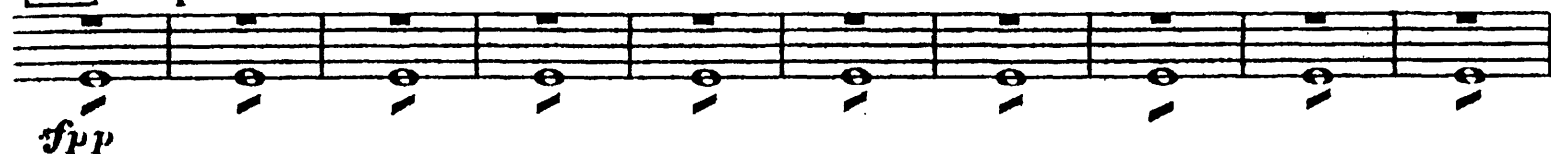
Meno mosso.

allarg.



29

Tempo I.



30

13



31

13

32

20



PIATTI e CASSA.

3

33 12 34 6

pp

cresc.

35 4 *mf*

p *cresc.*

36 21 *ff*

37 Allegro risoluto.
Piatti. *mf*

Cassa. *mf*

38 7 *f*

39 12 *f*

40 *pp*

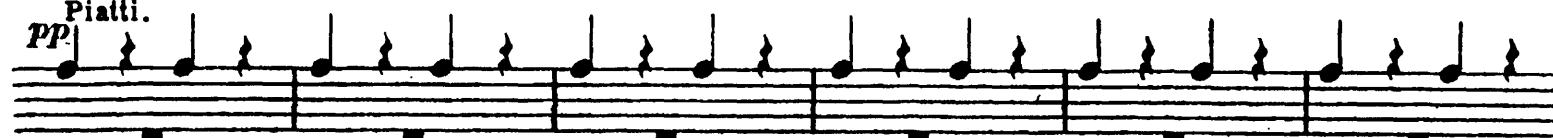
41 8

4

42

PIATTI e CASSA.

pp Piatti.



43

pp



44

8

45

4

mf



46

12



47

6

48

6

f

1

49

3

p

3



50

4



51

12



52

1



tacet al fine.

Nicolai Rimsky-Korsakov
Symphony No. 2, Op. 9 (Antar)

TAM-TAM.

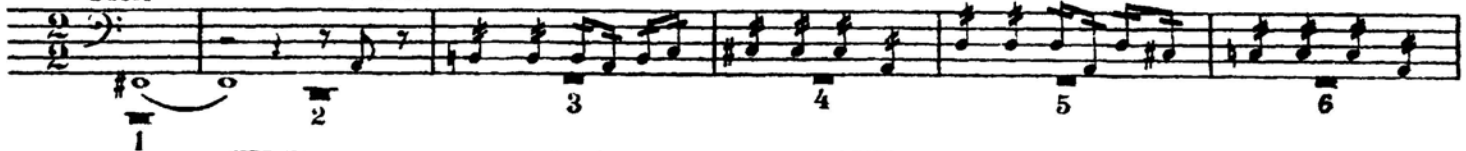
TACET.

23

Allegro.

Bassi

V-celli



28

Meno mosso allarg.

8

tam-tam

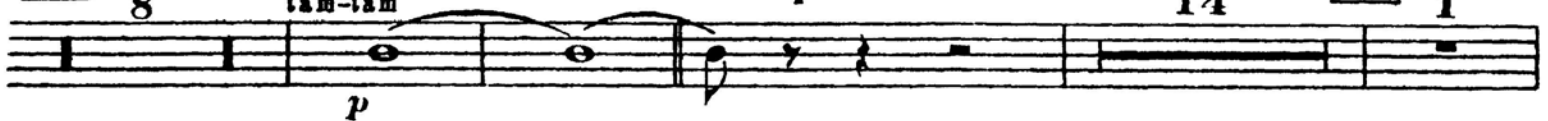
29

Tempo I.

14

30

1



31

3

3

3



32

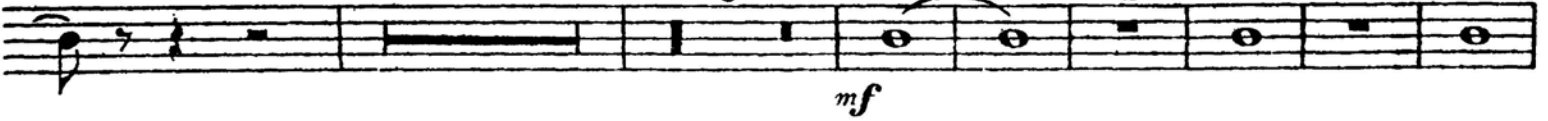
20

33

6

1

1



34

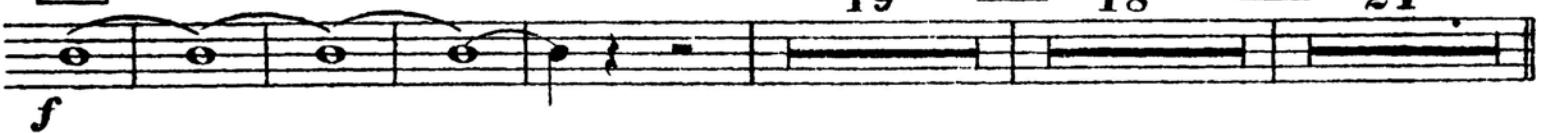
19

35

18

36

21



TAM-TAM.

TACET.

53

54

55

56

7

57

58

59

60

61

12

62

63

64

65

rit. 1

66

rit. **1**

67

68

2

Timp.

2

69

tam-tam

tacet al fine.

pp

ppp

Nicolai Rimsky-Korsakov
Symphony No. 2, Op. 9 (Antar)

I e II

TRIANGOLO E TAMBURINO.

TACENT.

III

Allegro risoluto.

37 Flauti 9

38 12 39 12 40 *pp*

41 8 42 *Triang. pp*

43 *pp*

44 8

TRIANGOLO E TAMBURINO.

45 *f* *tr*

46 12 47 6 *p*

48 *f* 1 *f*

49 10 50 4 *f*

51 12 *tr*

52 *f* *tr* *tr* *tr* *tr*

1 *tacit al fine.*