

Deuxième Récréation de Musique
d'une exécution facile

Composée pour deux Flutes ou pour deux Violons et la Basse Continue
Œuvre VIII (v. 1737)
par M^r. Le Clair L'Ainé

1. Overture

Jean-Marie Leclair (1697-1764)
Édité par Pierre Gouin

Gravement

Musical score for "The Rose Tree" in bass clef, 2/2 time. The key signature has one flat (B-flat). The score is divided into four systems, with measure numbers 6, 11, and 17 indicated at the beginning of their respective systems.

System 1 (Measures 1-5):

- Measure 1: Bass clef, 2/2 time signature, one flat key signature. A whole note G2 is followed by a whole rest.
- Measure 2: A half note G2 with a slur above it, followed by a half note A2 with a slur above it. A finger number '2' is written above the first G.
- Measure 3: A half note B2 with a sharp sign (#) below it, followed by a half note A2 with a sharp sign (#) below it. A finger number '6' is written below the first B.
- Measure 4: A half note G2 with a sharp sign (#) below it, followed by a half note F2 with a sharp sign (#) below it. A finger number '4' is written below the first G.
- Measure 5: A half note E2 with a sharp sign (#) below it, followed by a half note D2 with a sharp sign (#) below it. A finger number '6' is written below the first E.

System 2 (Measures 6-10):

- Measure 6: A half note C2 with a sharp sign (#) below it, followed by a half note B2 with a sharp sign (#) below it. A finger number '6' is written below the first C.
- Measure 7: A half note A2 with a slur above it, followed by a half note G2 with a slur above it. A finger number '5' is written below the first A.
- Measure 8: A half note F2 with a slur above it, followed by a half note E2 with a slur above it. A finger number '5' is written below the first F.
- Measure 9: A half note D2 with a slur above it, followed by a half note C2 with a slur above it. A finger number '7' is written below the first D.
- Measure 10: A half note B2 with a slur above it, followed by a half note A2 with a slur above it. A finger number '5' is written below the first B.

System 3 (Measures 11-15):

- Measure 11: A half note G2 with a sharp sign (#) below it, followed by a half note F2 with a sharp sign (#) below it. A finger number '+4' is written below the first G.
- Measure 12: A half note E2 with a sharp sign (#) below it, followed by a half note D2 with a sharp sign (#) below it. A finger number '6' is written below the first E.
- Measure 13: A half note C2 with a sharp sign (#) below it, followed by a half note B2 with a sharp sign (#) below it. A finger number '5' is written below the first C.
- Measure 14: A half note A2 with a slur above it, followed by a half note G2 with a slur above it. A finger number '6' is written below the first A.
- Measure 15: A half note F2 with a slur above it, followed by a half note E2 with a slur above it. A finger number '7' is written below the first F.

System 4 (Measures 16-19):

- Measure 16: A half note D2 with a slur above it, followed by a half note C2 with a slur above it. A finger number '6' is written below the first D.
- Measure 17: A half note B2 with a slur above it, followed by a half note A2 with a slur above it. A finger number '7' is written below the first B.
- Measure 18: A half note G2 with a sharp sign (#) below it, followed by a half note F2 with a sharp sign (#) below it. A finger number '6' is written below the first G.
- Measure 19: A half note E2 with a sharp sign (#) below it, followed by a half note D2 with a sharp sign (#) below it. A finger number '5' is written below the first E.

Légerement

22

2

27

32

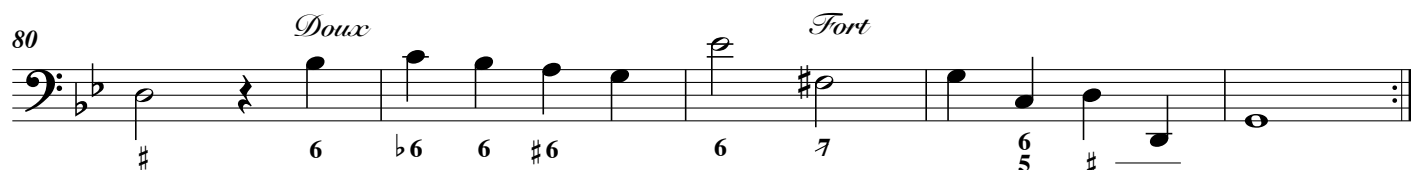
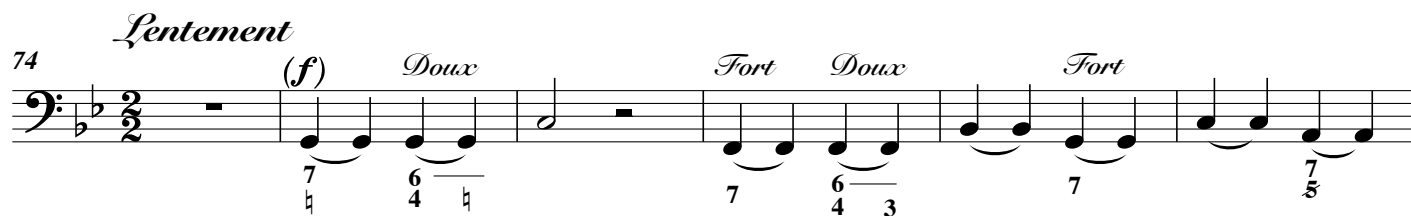
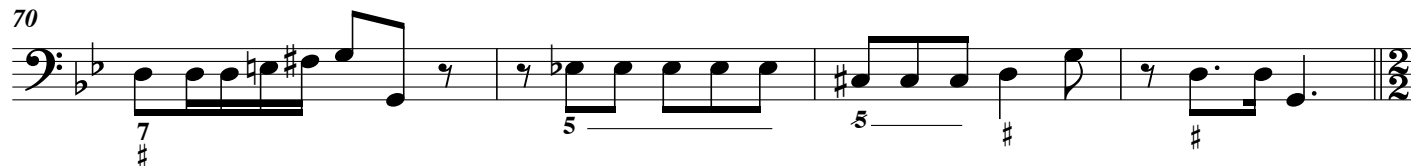
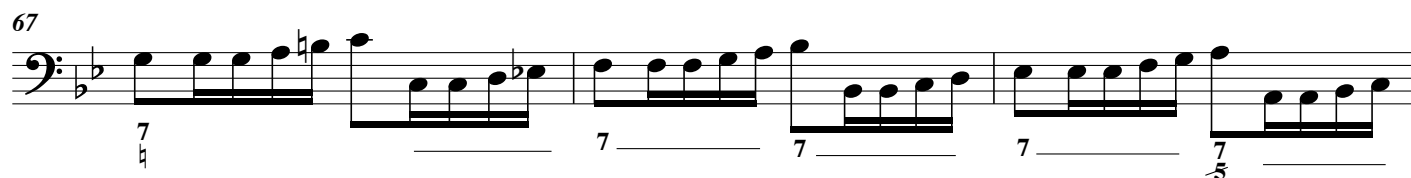
37

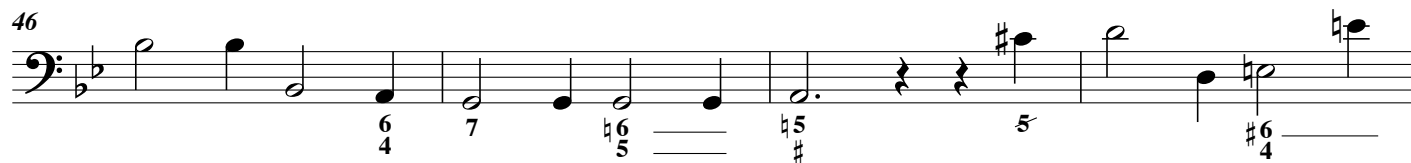
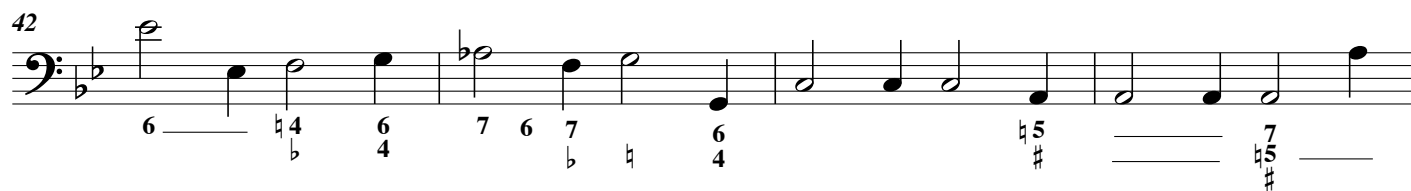
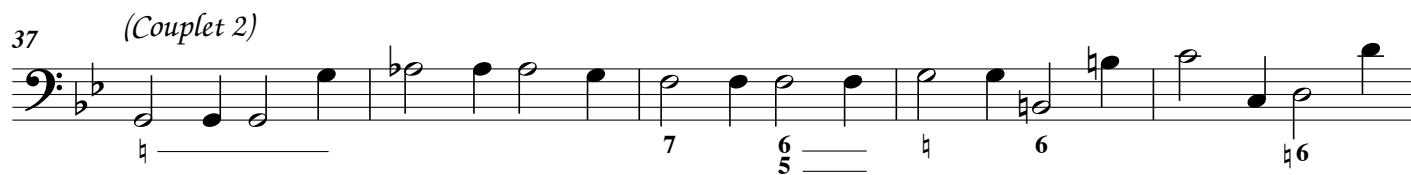
43

47

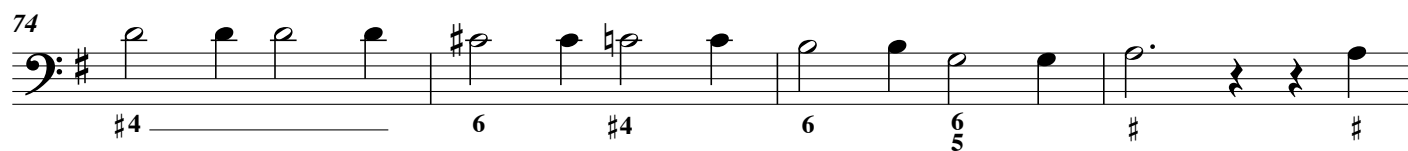
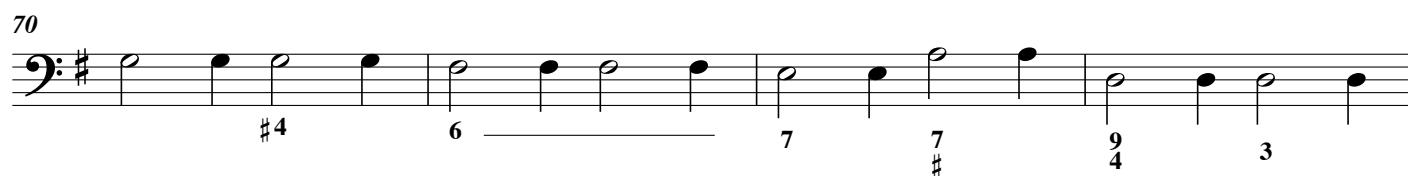
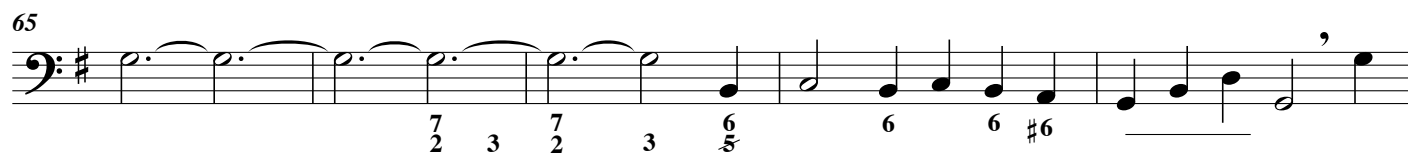
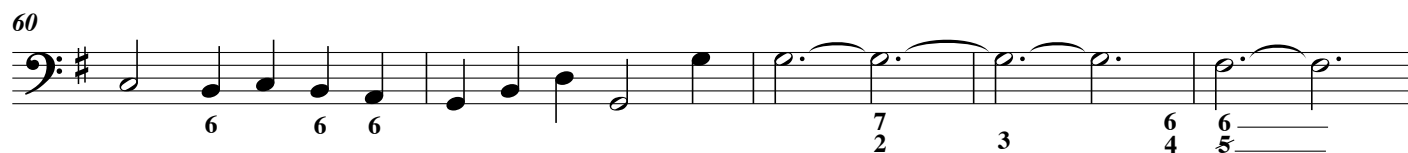
53

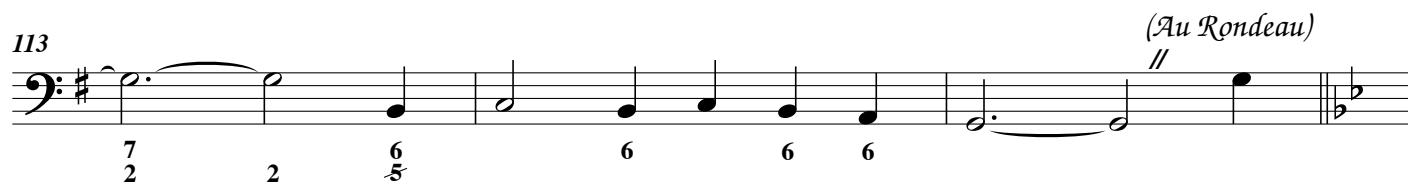
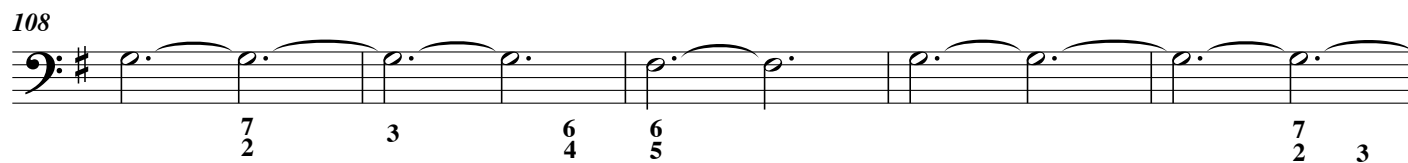
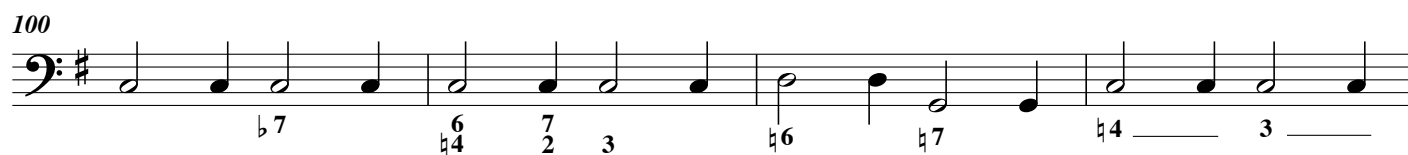
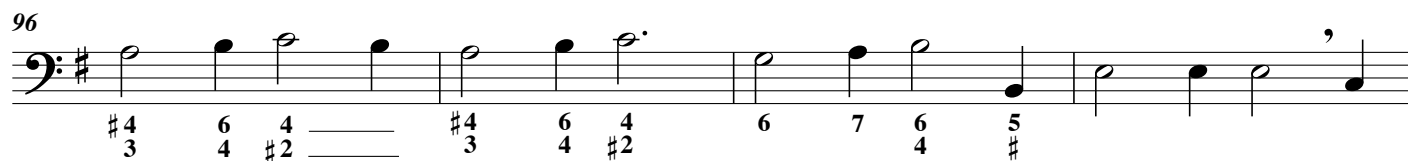
© Les Éditions Outremontaises, 2006





(Couplet 3)





3. Sarabande

Lentement.

7

13

19

9 6 4+ 6 6 7 5 9 6

7 6 5 7 5 9 8

9 7 5 4+ 6 6 7 5 9 6

9 6 4+ 7 4+ 6 9 7 5 7

4. Menuet

8

1. 2.

15

22

Autre (menuet)

29

1. 2.

35

43

(Doux) *(Fort)*

On reprend les 2 Menuets.

5. *Badinage*

(Le *Rondeau* est répété la première fois seulement.)

(Rondeau)

6

(Premier Couplet)

Point d'accord

13

18

(au Rondeau)

23

(Second Couplet)

30

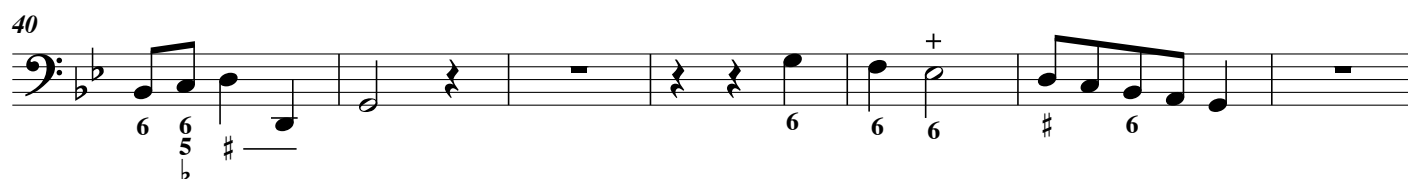
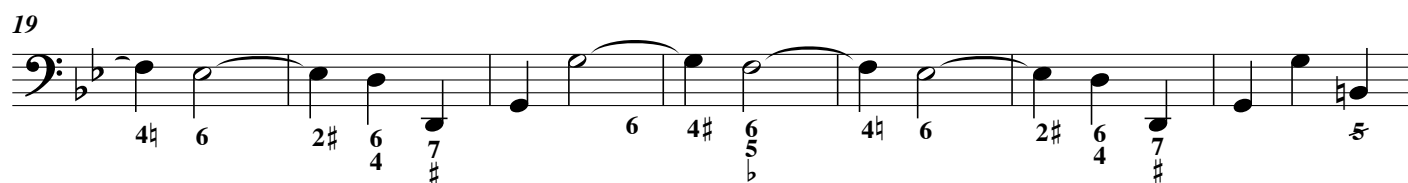
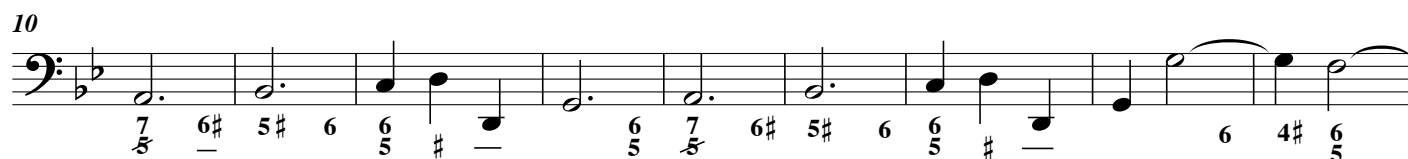
34

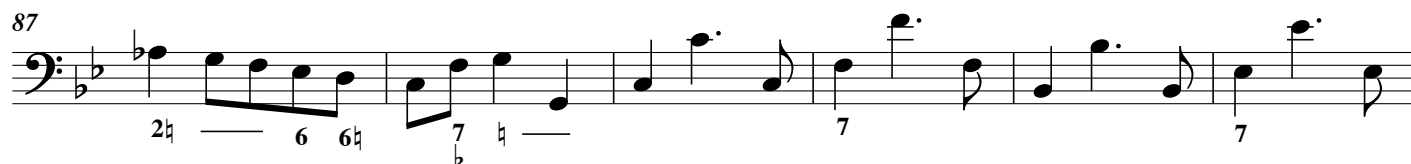
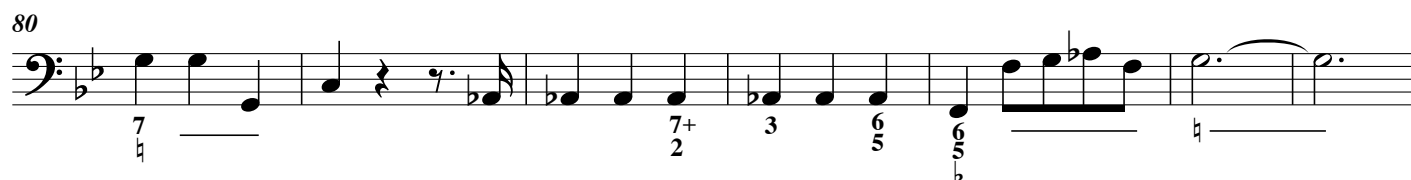
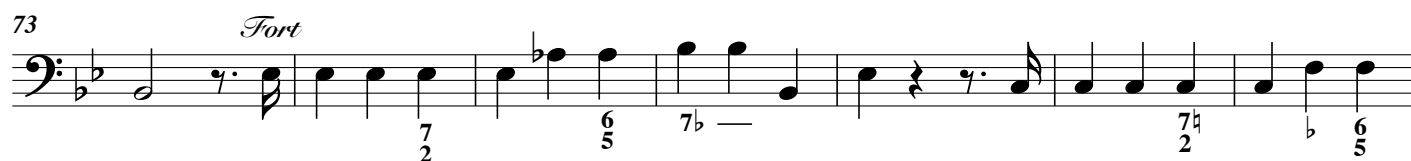
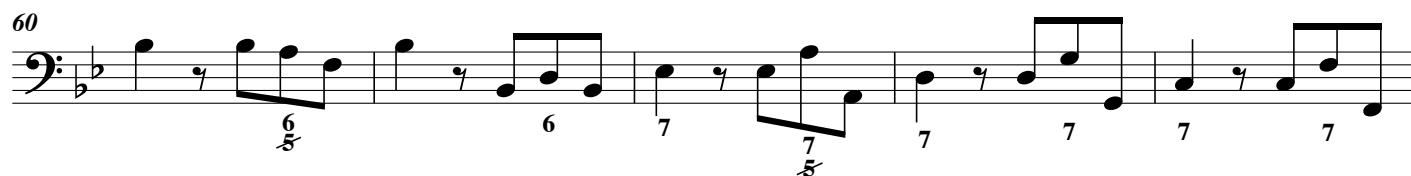
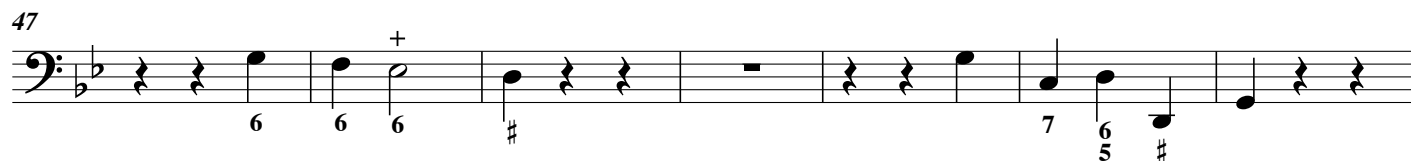
38

(au Rondeau)

Point d'accord

6. Chaconne





93

Musical notation for exercise 93, featuring a bass clef, key signature of one flat (B-flat), and a common time signature. The melody consists of eighth notes and quarter notes, with some measures containing rests. Fingering numbers are indicated below the staff: 7, 8, 7, #, 6, 5, 6, 5, 7, 6, 5, #, 6.

100

6 # 6 #

104

104

107

6 7 6 7 6 7 6 7 6 7

117

7 6 7 6 6 7 6 7 6

122

7 6 5 7 6 5 7 6 5 7 6 5

129

9 7 6 — 9 7 7 — 7 7 7 — 7 7 7 — 7 7 7 — 7 7 7 — 7 7 7 — 7 7 7 — 7 7 7 — 7 7 7 — 7 7 7 — 7 7 7 —

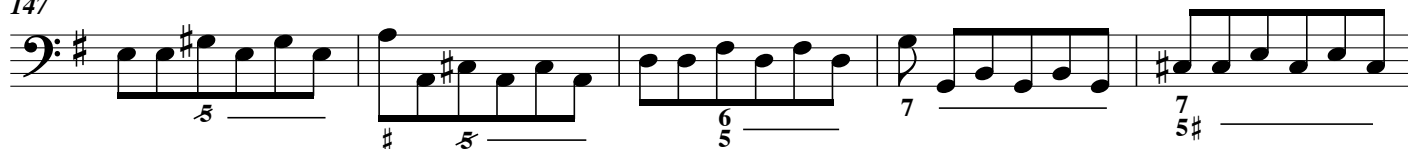
135



141



147



152



158

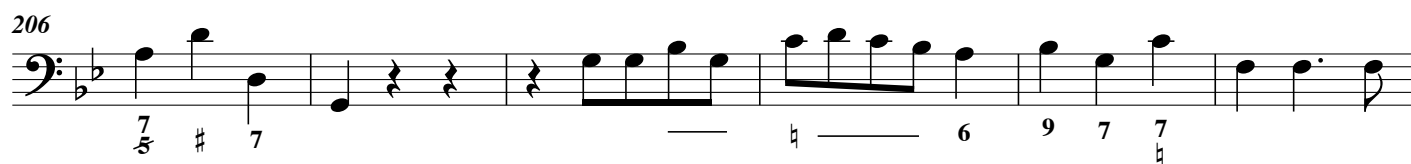
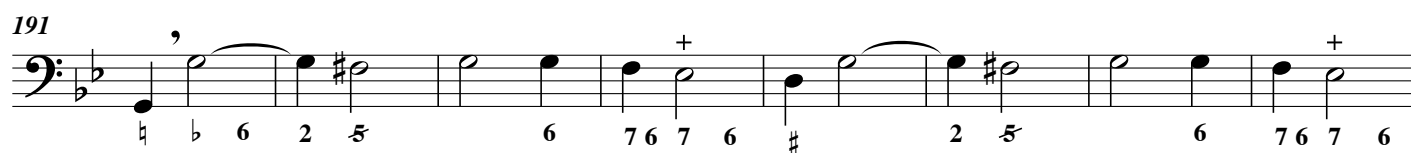
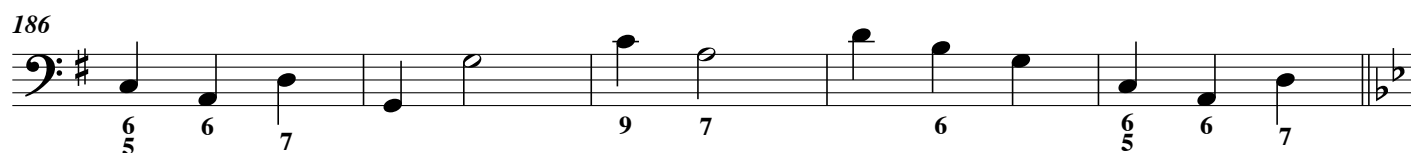
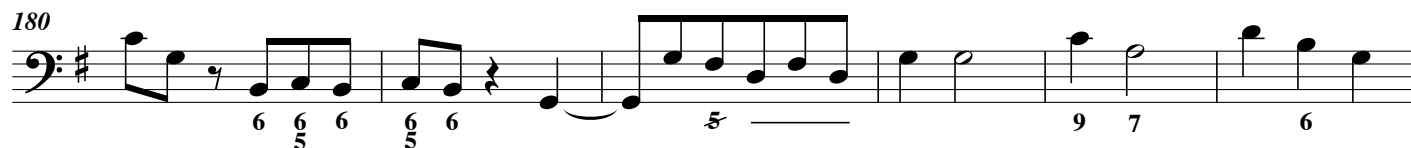
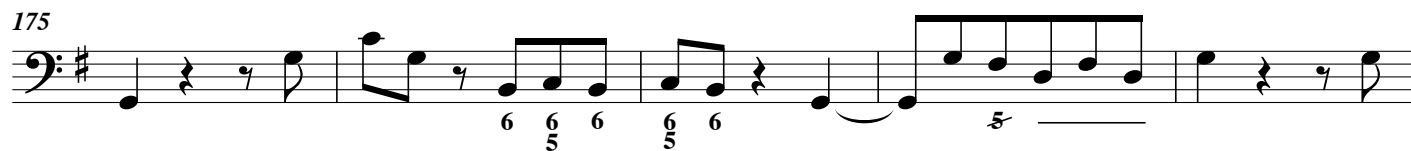


163

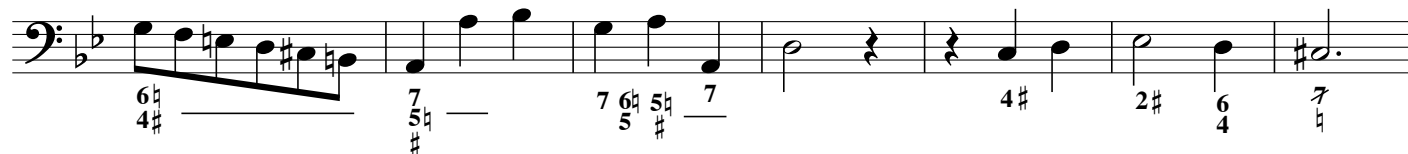


168

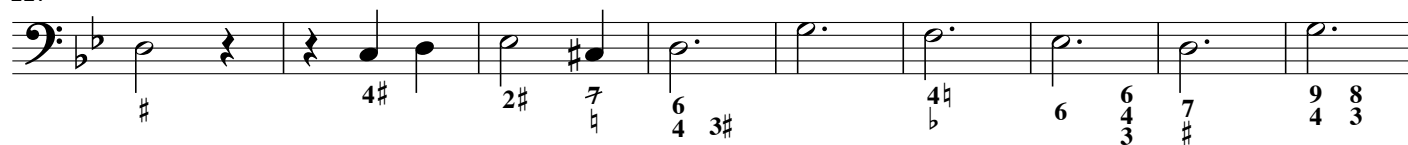




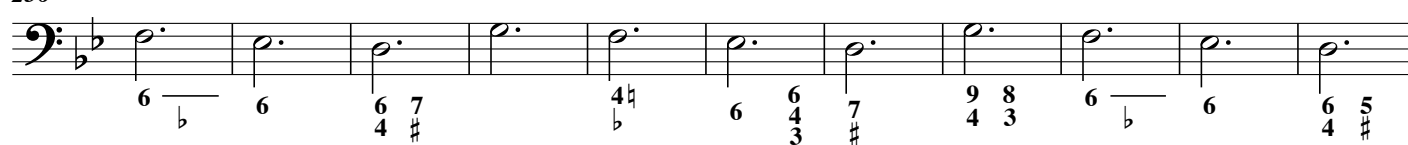
220



227



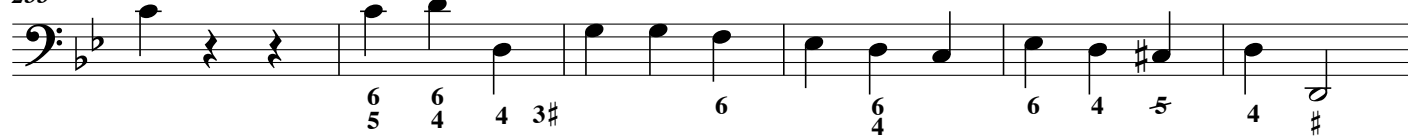
236



247



253



259

Doux

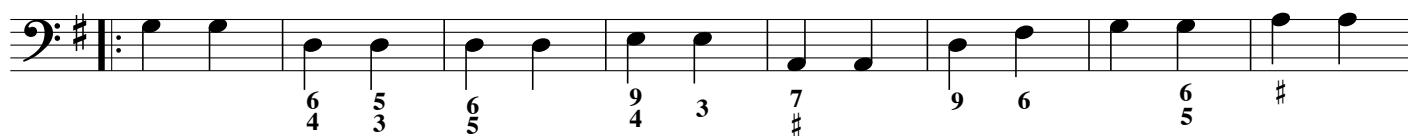
7. Tambourin

Viste

Point d'accord -----



9



17 *Point d'accord* -----



27

Point d'accord -----

Fin.



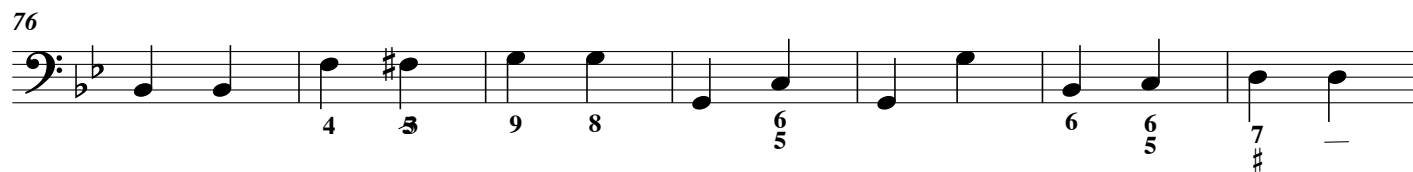
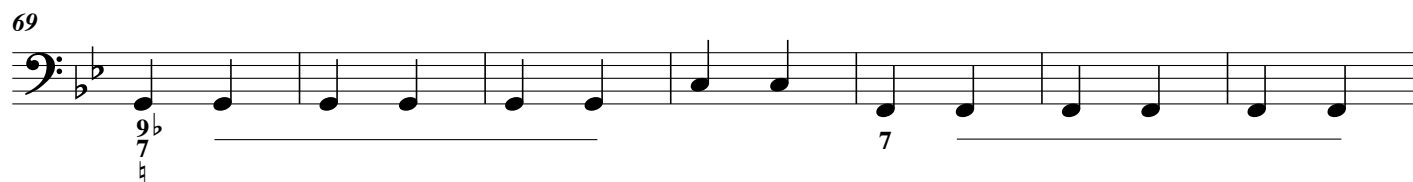
37

Autre



45





(Reprendre le Tambourin I)