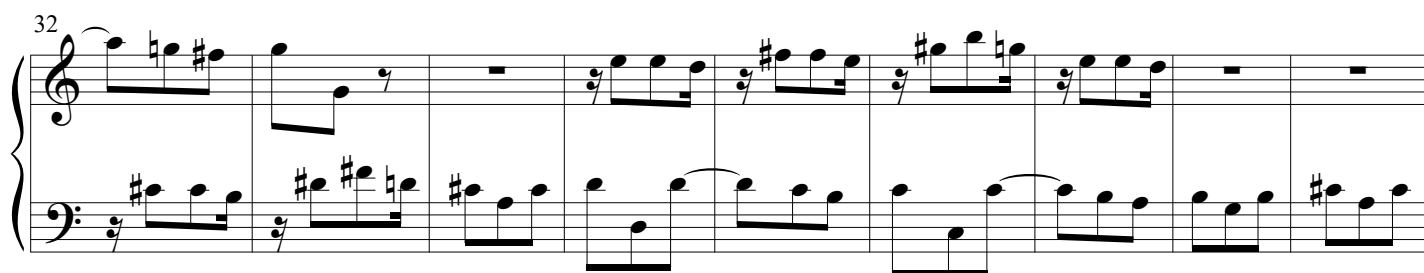
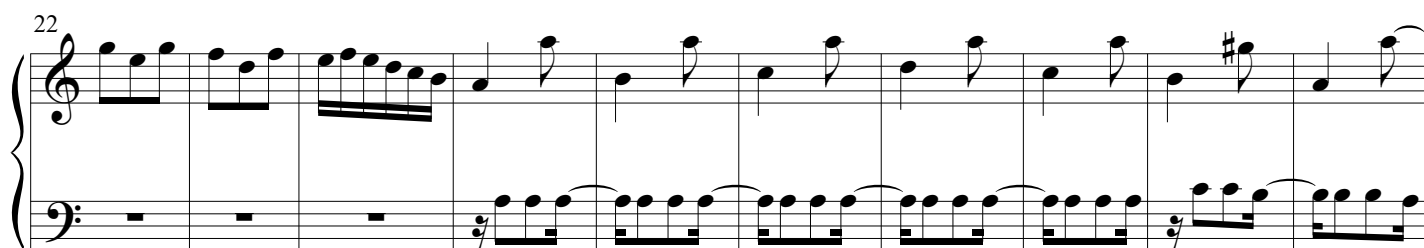


Piano II

Praeludium et Fuga

BWV 848

J. Sebastian Bach
Arr. Peter H. Besseling



52

Measures 52-61 of the Praeludium. The right hand features a series of sixteenth-note runs, while the left hand plays a steady eighth-note accompaniment.

62

Measures 62-72 of the Praeludium. The right hand continues with sixteenth-note patterns, and the left hand maintains the eighth-note accompaniment.

73

Measures 73-81 of the Praeludium. The right hand shows more complex sixteenth-note figures, and the left hand continues the eighth-note accompaniment.

82

Measures 82-91 of the Praeludium. The right hand features sixteenth-note runs, and the left hand continues the eighth-note accompaniment.

92

Measures 92-101 of the Praeludium. The right hand continues with sixteenth-note patterns, and the left hand maintains the eighth-note accompaniment.

Fuga

102

Measures 102-107 of the Fuga. The right hand plays a series of eighth-note runs, and the left hand continues with a steady eighth-note accompaniment.

5

8

11

15

18

21

24



27



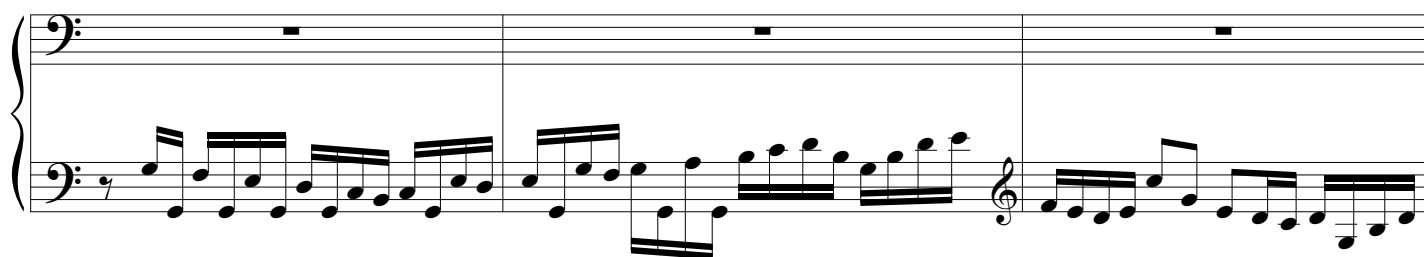
30



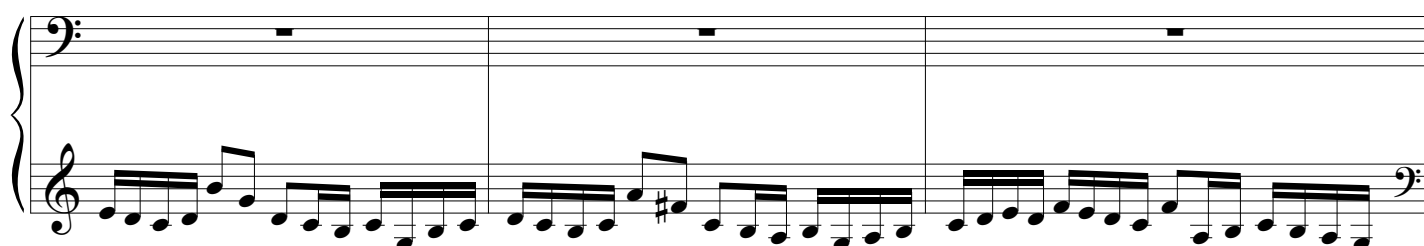
33



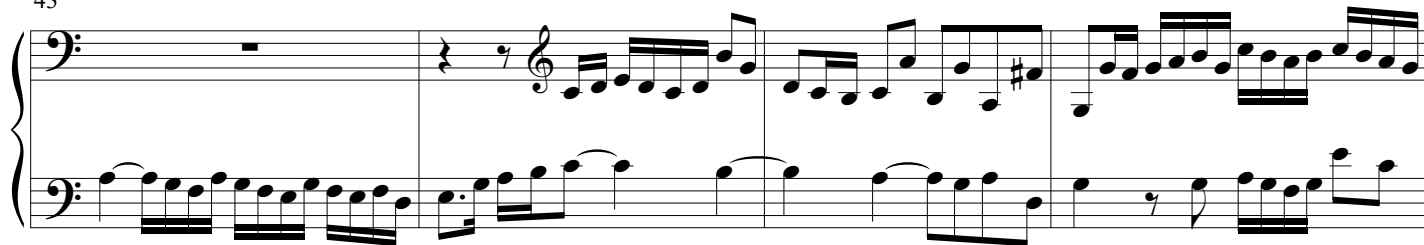
37



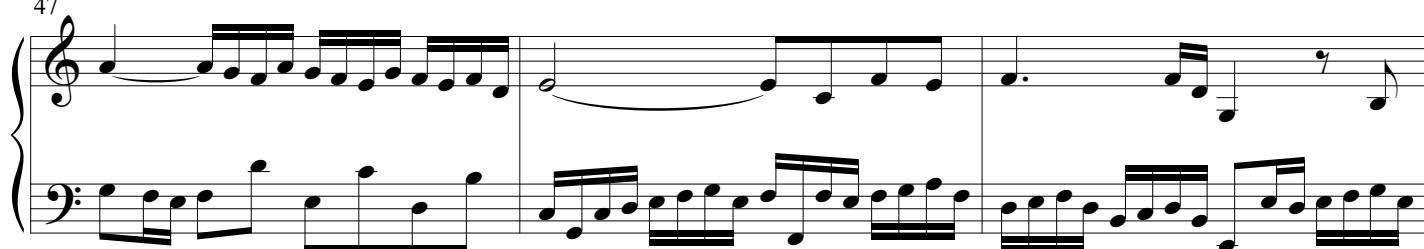
40



43



47



50



53

