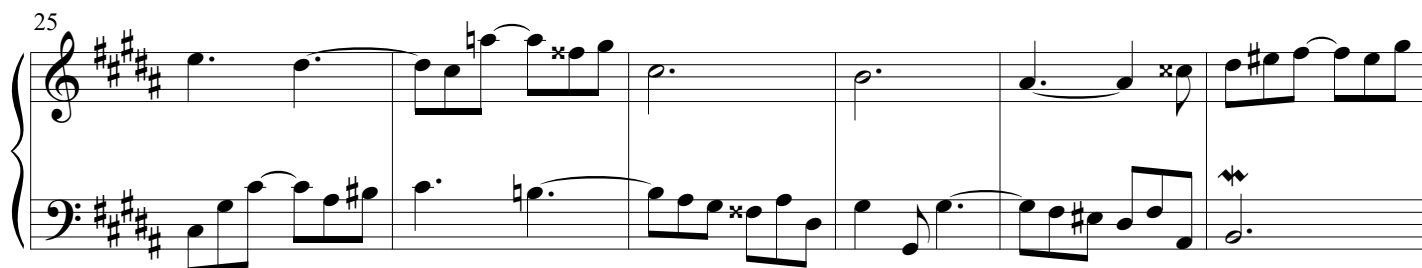
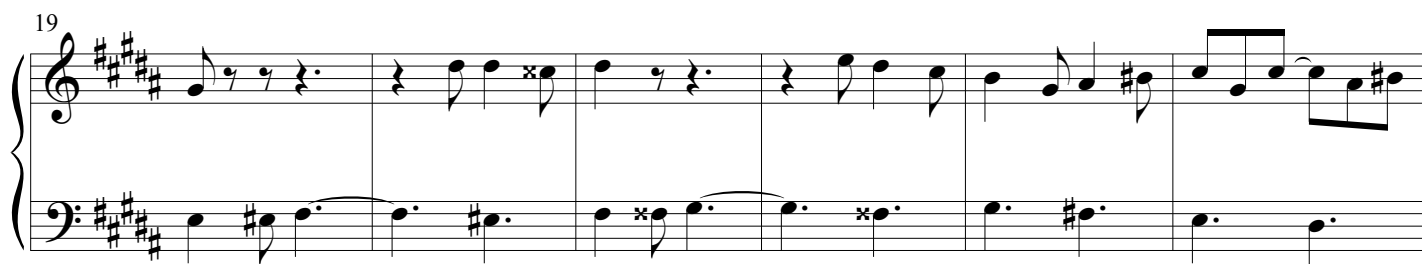
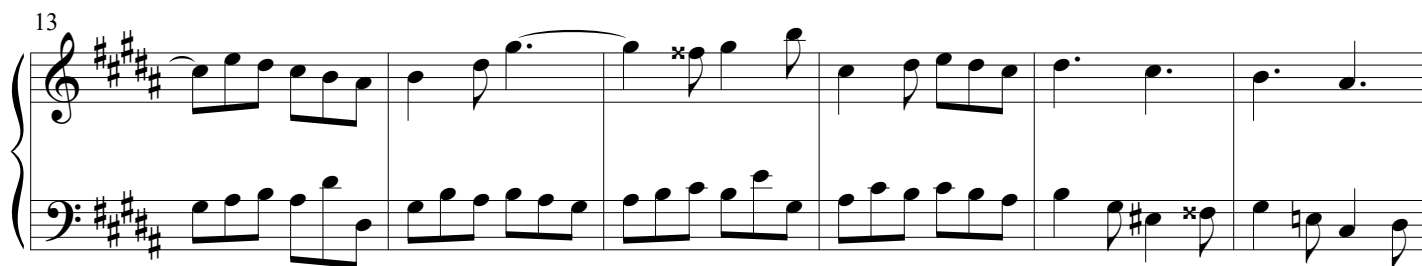
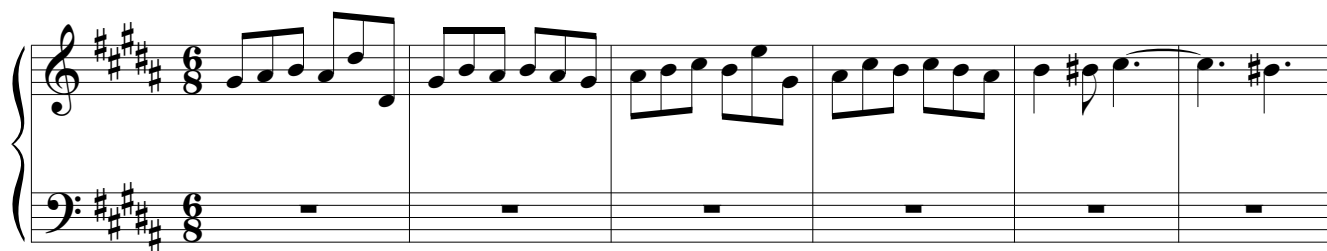


Piano I

Fuga XVIII

BWV 887

J. Sebastian Bach
Arr. Peter H. Besseling



31

37

42

47

53

59

64

69

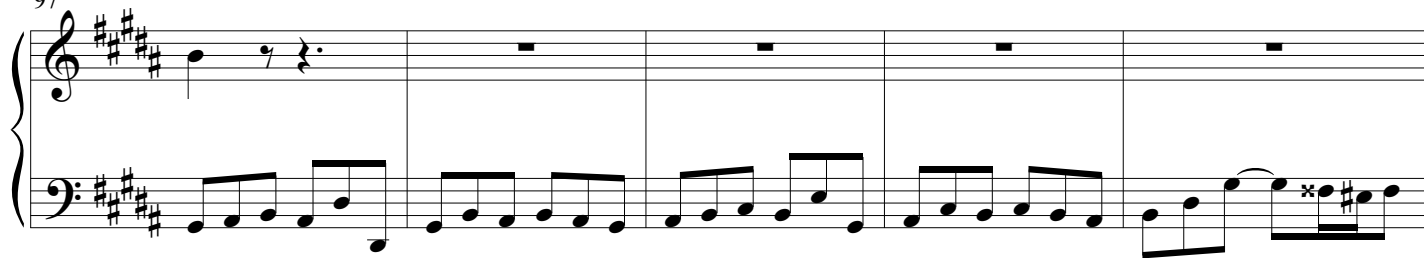
75

80

86

92

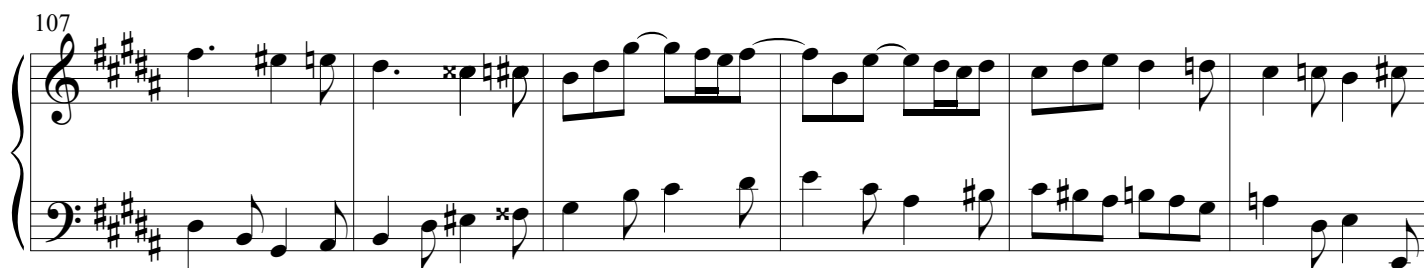
97



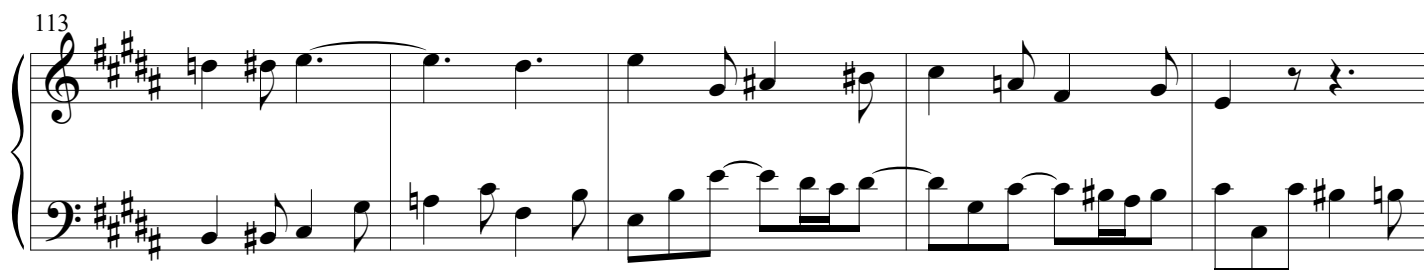
102



107



113



118



123



129

Measures 129-133. The key signature is three sharps (F#, C#, G#). The melody in the right hand features a series of eighth and sixteenth notes, with some measures containing accidentals (x) and rests. The left hand provides a steady accompaniment with eighth and sixteenth notes.

134

Measures 134-138. The melody continues with eighth and sixteenth notes. The left hand features a more active line with sixteenth-note patterns and some accidentals.

139

Measures 139-143. The melody concludes with a half note. The left hand continues with eighth and sixteenth notes, ending with a final chord. The system concludes with a double bar line.