

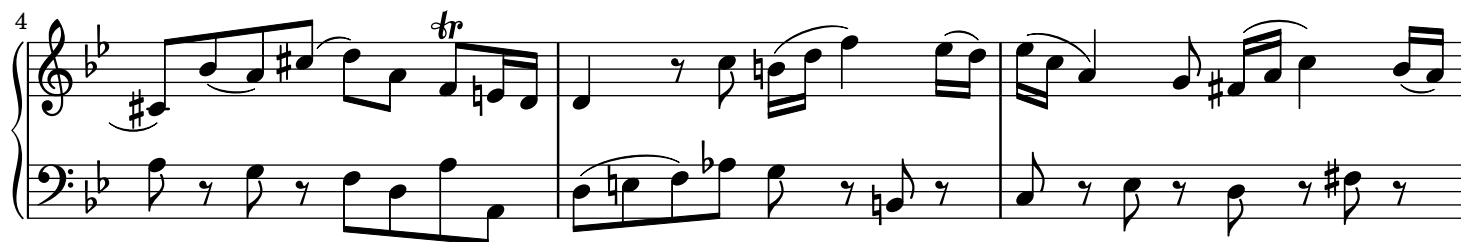
# Mass in B minor, BWV 232

## Piano Transcription

Johann Sebastian Bach (1749)

Arr. Ruoshi Sun (2021)

### 26. Agnus Dei



19

Measures 19-21 of a musical score. The key signature has two flats (B-flat and E-flat). The melody in the treble clef features eighth and sixteenth notes with various accidentals (sharps and naturals). The bass line consists of eighth notes and rests.

22

Measures 22-24 of a musical score. The melody continues with eighth and sixteenth notes. The bass line features eighth notes and rests.

25

Measures 25-27 of a musical score. Measure 27 includes a piano (*p*) dynamic marking. The melody and bass line continue with similar rhythmic patterns.

28

Measures 28-30 of a musical score. The melody and bass line continue with similar rhythmic patterns.

31

Alto

Measures 31-33 of a musical score. Measure 31 is marked 'Alto'. The melody and bass line continue with similar rhythmic patterns.

34

Measures 34-36 of a musical score. The melody and bass line continue with similar rhythmic patterns.

37

Measures 37-39 of a musical score. The melody and bass line continue with similar rhythmic patterns.

40

Alto

This system contains measures 40, 41, and 42. The music is in 3/4 time with a key signature of two flats (B-flat and E-flat). The treble clef staff features a complex melodic line with many beamed sixteenth and thirty-second notes, including a triplet in measure 42. The bass clef staff provides a steady accompaniment with eighth and sixteenth notes. The word 'Alto' is written below the first measure of the bass staff.

43

This system contains measures 43, 44, and 45. The melodic line in the treble staff continues with intricate rhythmic patterns, including a triplet in measure 44. The bass staff continues with a consistent accompaniment. A dynamic marking of *f* (forte) appears in measure 45.

46

This system contains measures 46, 47, and 48. The music concludes with a final measure (48) that features a whole note chord in the treble and a half note in the bass, followed by a double bar line.