

Contrabass

Piano Concerto in G

Maurice Ravel

Allegramente $\text{♩} = 116$
15

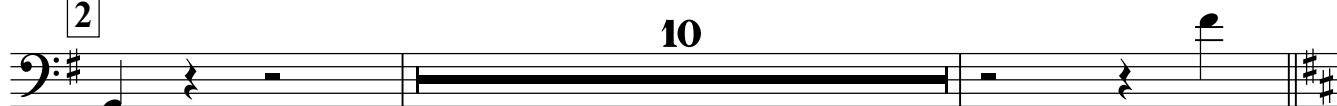
1 I. Allegramente
7



p cresc.

2

10



f

ff

3

4

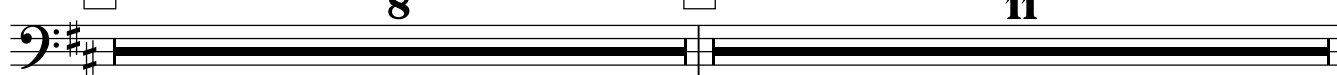


4 Meno vivo

8

5

11



6

12

7

3

arco con sord.



p

81

8

senza sord.

11



9

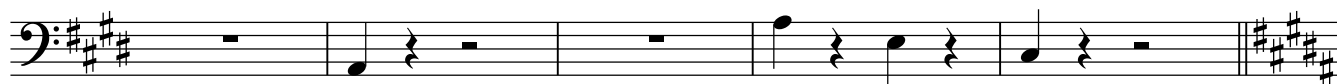
pizz.

mp

p



102



f

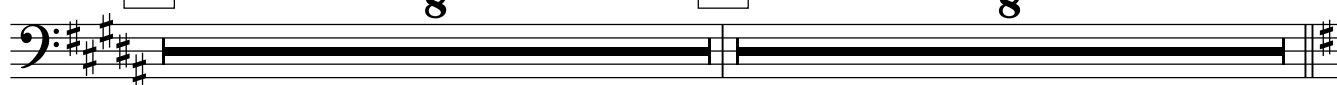
ff

10

Tempo primo $\text{♩} = 120$
8

11

8



12

arco

mf

4



13



137

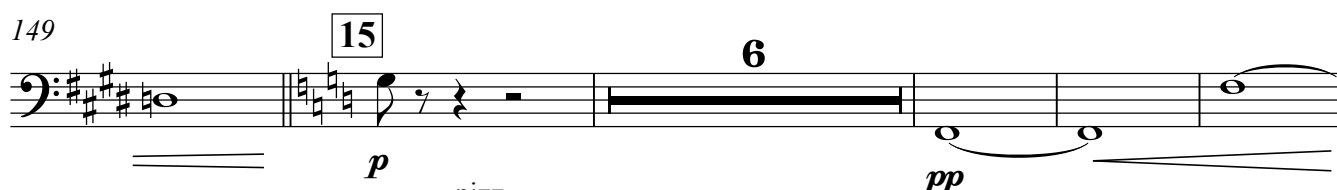


14



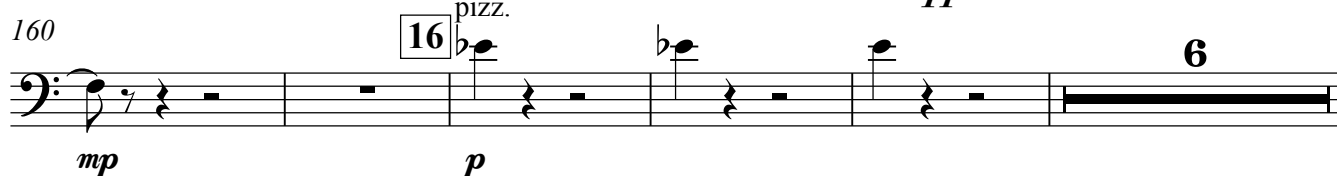
149

15



160

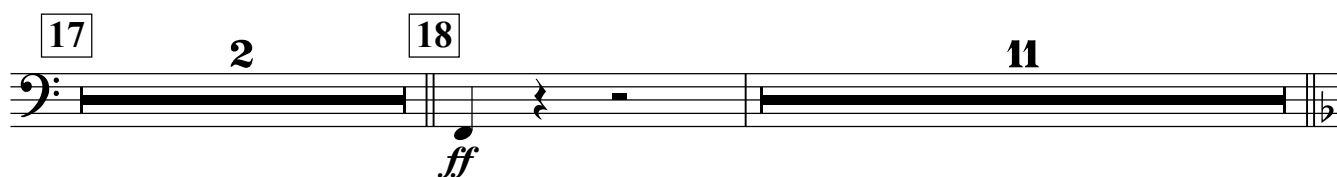
16



17

2

18



19

7

20

Meno vivo



197

21

pizz.



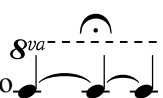
Andante

22

6

23

arco



2



Tempo Primo $\text{♩} = 84$
unis.

Andante a piacere

4

Musical notation for the bass line of 'The Rose Tree'. The key signature is one sharp (F#) and the time signature is 4/4. The notation consists of a single staff with a treble clef. The melody is written in a simple, folk-like style, starting on a whole note G4, followed by a half note A4, a quarter note B4, and a quarter note C5. The melody then descends: a half note B4, a quarter note A4, a quarter note G4, and a quarter note F#4. The melody continues with a half note E4, a quarter note D4, a quarter note C4, and a quarter note B3. The melody concludes with a half note A3 and a quarter note G3. The notation is presented in a clean, black-and-white format.

 θ

Tempo Primo $\text{♩} = 120$

The bass line is written on a single staff in bass clef with a key signature of one sharp (F#). The melody consists of a quarter note G2, followed by a quarter rest, then a half note A2, and another quarter rest. This sequence is repeated three times, with the first and third iterations marked with a '3' above the staff, indicating a triplet. The final note is marked with a '7' above the staff, indicating a seventh. The dynamics are marked with 'pp' (pianissimo) below the staff.

p

[illegible]

4

 mf

6

[illegible]

Contrabass

Contrabass

34 10 35 pizz. *mf* *cresc.*

309 unis.

36 arco *f*

320 *ff*

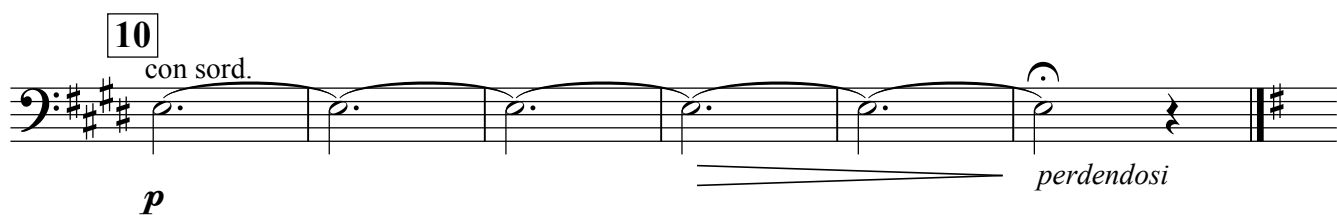
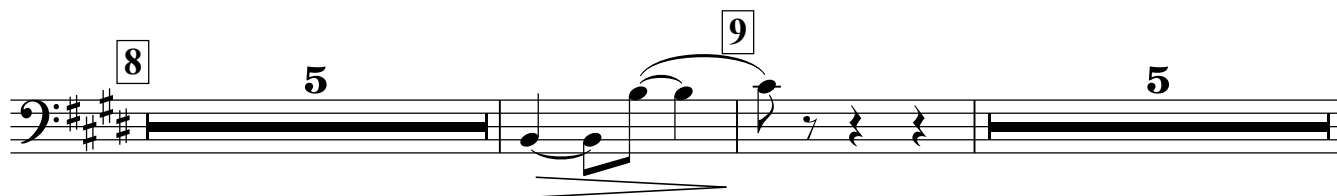
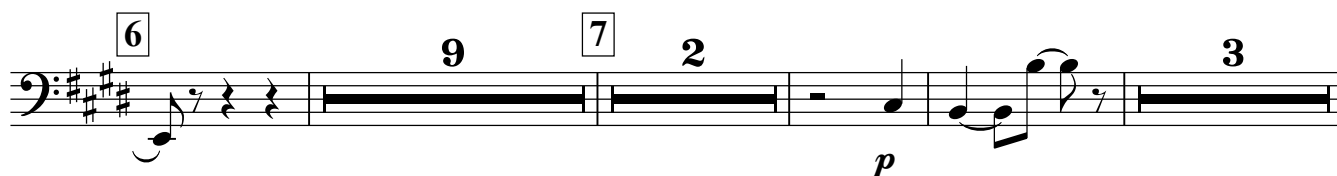
II. Adagio Assai

1 Adagio Assai ♩ = 76 33 1 11

2 5 3 3 5

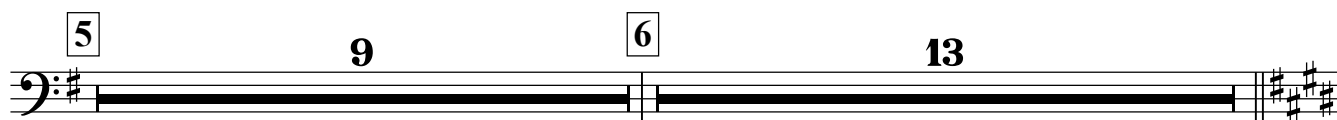
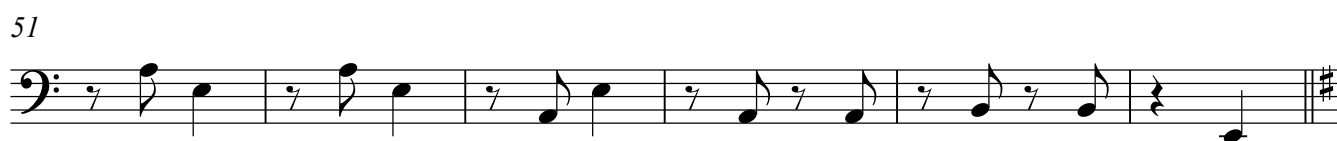
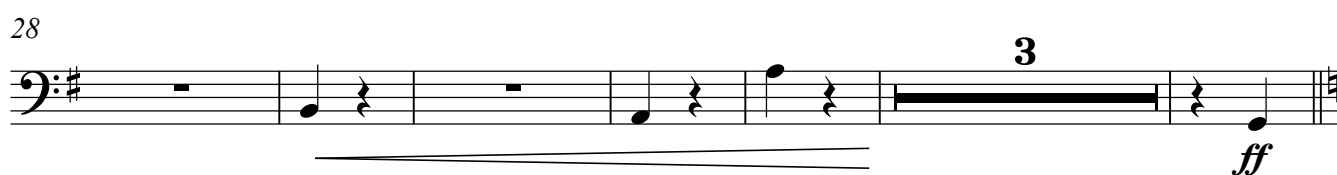
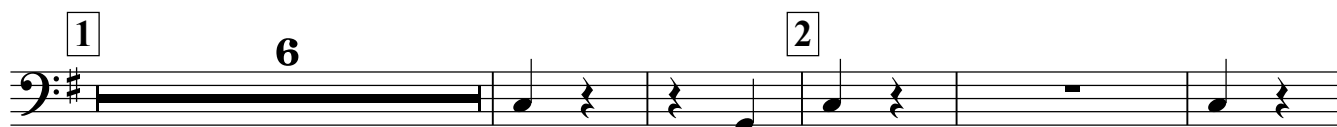
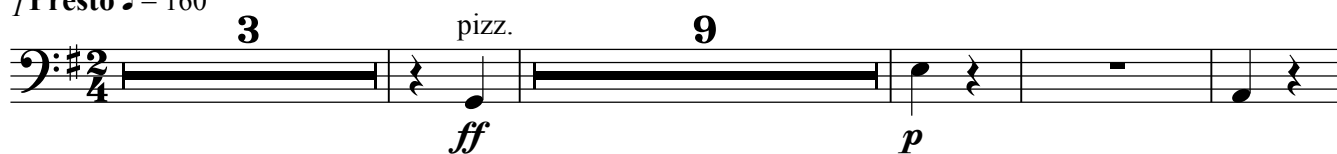
4 *mf*

5 4 *p*



III. Presto

I Presto ♩ = 160



Contrabass

