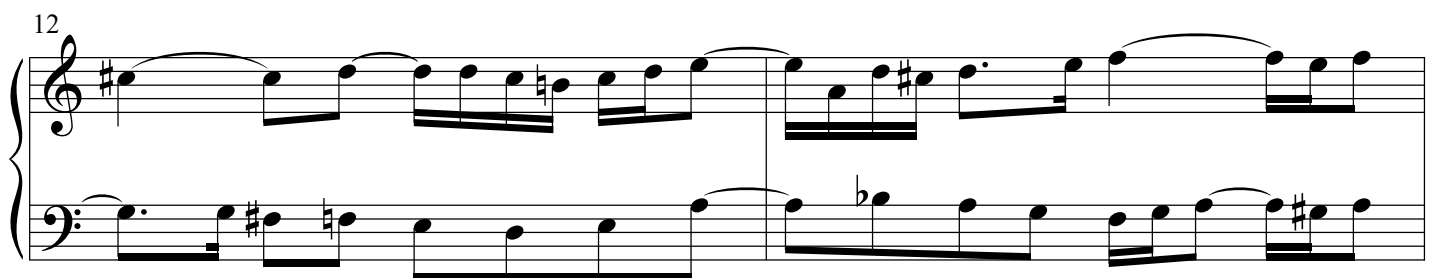
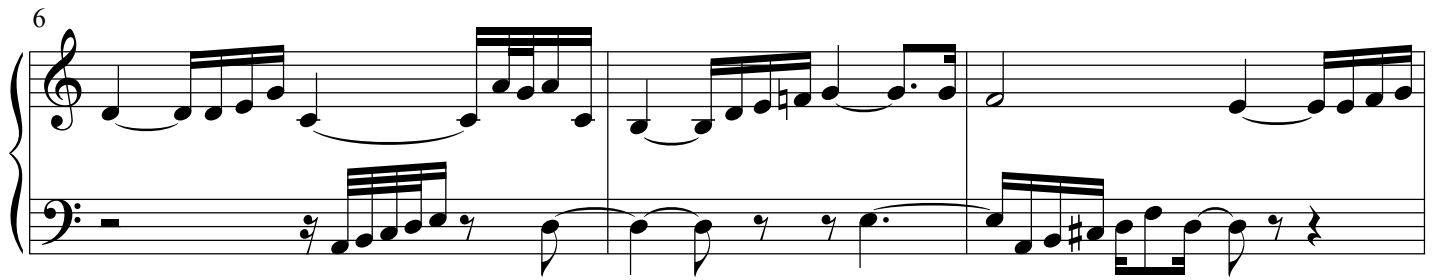
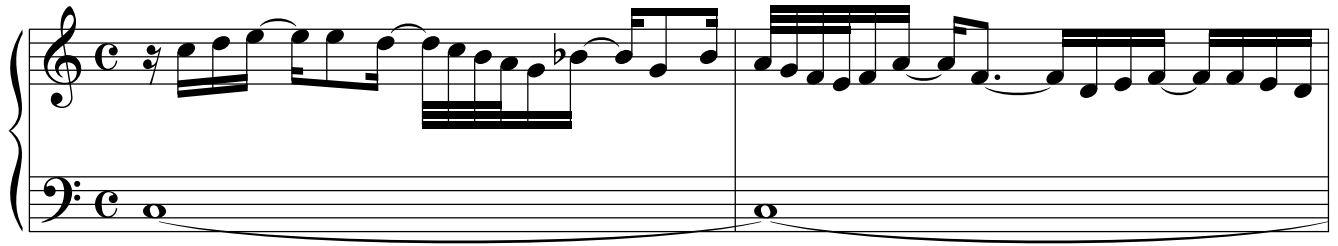


Praeludium et Fuga I

BWV 870

J. SEBASTIAN BACH

PETER H. BESSELING



14

17

19

22

25

27

30

33

Fuga

4

9

14

19

4

Praeludium et Fuga I - PIANO I

24

Measures 24-28 of the Praeludium et Fuga I. The treble clef staff contains a melodic line with a key signature of one sharp (F#) and a common time signature. The bass clef staff provides a harmonic accompaniment. Measure 24 starts with a quarter rest in the bass and a quarter note in the treble. Measure 25 has a quarter rest in the bass and a quarter note in the treble. Measure 26 has a quarter rest in the bass and a quarter note in the treble. Measure 27 has a quarter rest in the bass and a quarter note in the treble. Measure 28 has a quarter rest in the bass and a quarter note in the treble.

29

Measures 29-33 of the Praeludium et Fuga I. The treble clef staff contains a melodic line with a key signature of one sharp (F#) and a common time signature. The bass clef staff provides a harmonic accompaniment. Measure 29 starts with a quarter rest in the bass and a quarter note in the treble. Measure 30 has a quarter rest in the bass and a quarter note in the treble. Measure 31 has a quarter rest in the bass and a quarter note in the treble. Measure 32 has a quarter rest in the bass and a quarter note in the treble. Measure 33 has a quarter rest in the bass and a quarter note in the treble.

34

Measures 34-38 of the Praeludium et Fuga I. The treble clef staff contains a melodic line with a key signature of one sharp (F#) and a common time signature. The bass clef staff provides a harmonic accompaniment. Measure 34 starts with a quarter rest in the bass and a quarter note in the treble. Measure 35 has a quarter rest in the bass and a quarter note in the treble. Measure 36 has a quarter rest in the bass and a quarter note in the treble. Measure 37 has a quarter rest in the bass and a quarter note in the treble. Measure 38 has a quarter rest in the bass and a quarter note in the treble.

39

Measures 39-43 of the Praeludium et Fuga I. The treble clef staff contains a melodic line with a key signature of one sharp (F#) and a common time signature. The bass clef staff provides a harmonic accompaniment. Measure 39 starts with a quarter rest in the bass and a quarter note in the treble. Measure 40 has a quarter rest in the bass and a quarter note in the treble. Measure 41 has a quarter rest in the bass and a quarter note in the treble. Measure 42 has a quarter rest in the bass and a quarter note in the treble. Measure 43 has a quarter rest in the bass and a quarter note in the treble.

44

Measures 44-48 of the Praeludium et Fuga I. The treble clef staff contains a melodic line with a key signature of one sharp (F#) and a common time signature. The bass clef staff provides a harmonic accompaniment. Measure 44 starts with a quarter rest in the bass and a quarter note in the treble. Measure 45 has a quarter rest in the bass and a quarter note in the treble. Measure 46 has a quarter rest in the bass and a quarter note in the treble. Measure 47 has a quarter rest in the bass and a quarter note in the treble. Measure 48 has a quarter rest in the bass and a quarter note in the treble.

49

Measures 49-53 of the Praeludium et Fuga I. The treble clef staff contains a melodic line with a key signature of one sharp (F#) and a common time signature. The bass clef staff provides a harmonic accompaniment. Measure 49 starts with a quarter rest in the bass and a quarter note in the treble. Measure 50 has a quarter rest in the bass and a quarter note in the treble. Measure 51 has a quarter rest in the bass and a quarter note in the treble. Measure 52 has a quarter rest in the bass and a quarter note in the treble. Measure 53 has a quarter rest in the bass and a quarter note in the treble.

54

59

64

69

74

79