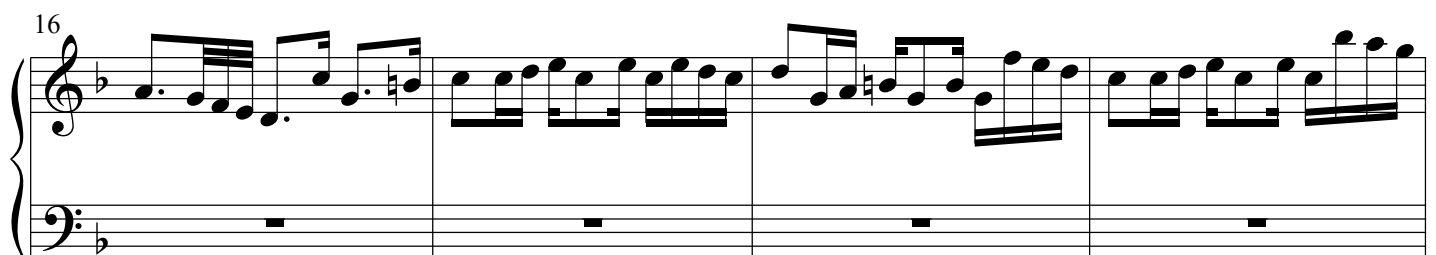
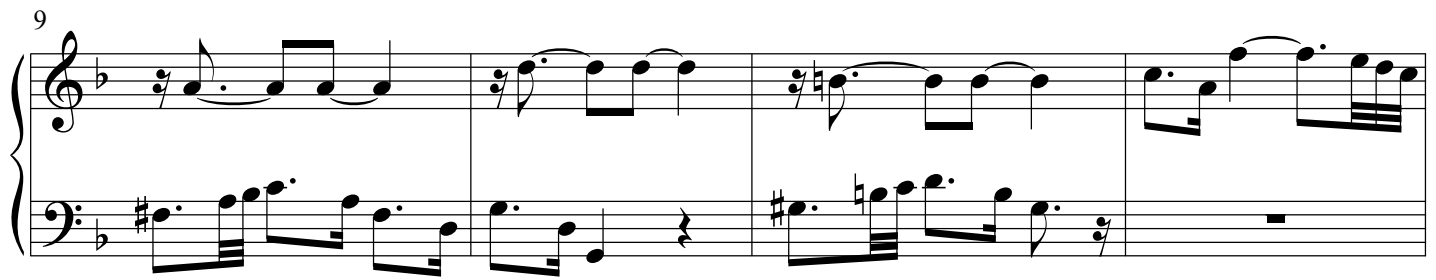
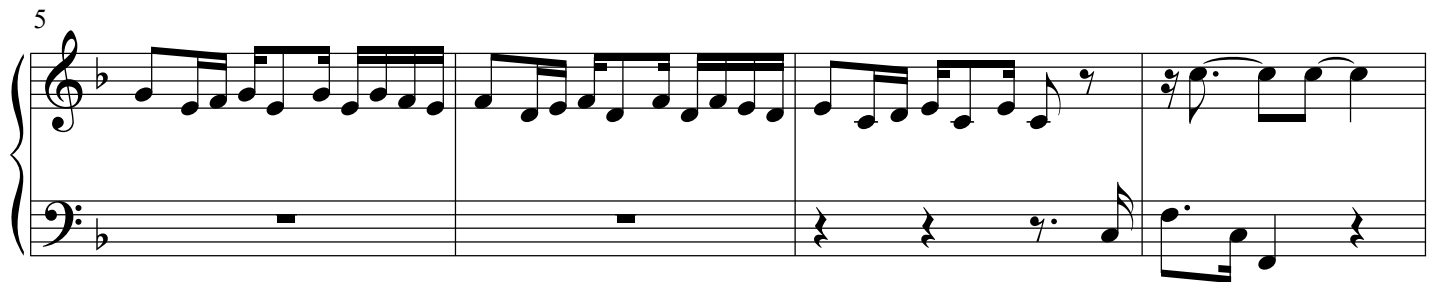
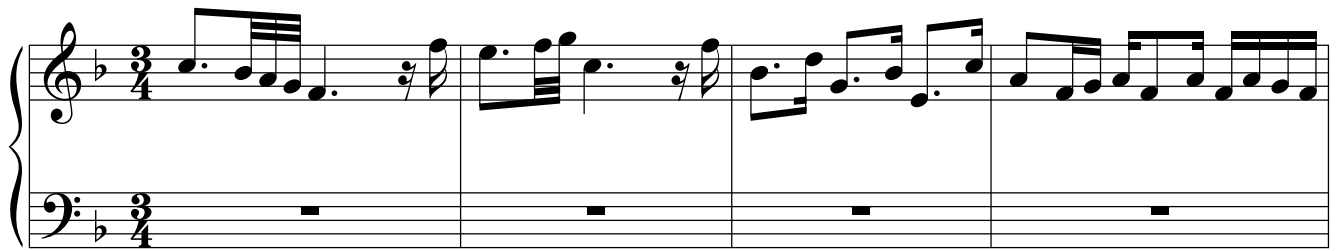


**Praeludium et Fuga XIII**

BWV 882

J. SEBASTIAN BACH

PETER H. BESSELING



2

## Draeludium et Fuga XIII - PIANO I

20

Measures 20-22 of the musical score. The treble clef staff contains a melodic line with eighth and sixteenth notes, including a triplet in measure 20. The bass clef staff provides a harmonic accompaniment with eighth notes and rests.

23

Measures 23-25 of the musical score. The treble clef staff features a continuous eighth-note melody. The bass clef staff is mostly silent, with a few notes in measure 23.

26

Measures 26-28 of the musical score. The treble clef staff includes trills (tr) and grace notes. The bass clef staff continues with a steady eighth-note accompaniment.

29

Measures 29-31 of the musical score. The treble clef staff shows trills (tr) and a key signature change to one sharp (F#). The bass clef staff has a few notes in measure 29 and then rests.

32

Measures 32-34 of the musical score. The treble clef staff has a melodic line with a key signature change to two sharps (F# and C#). The bass clef staff has a few notes in measure 32 and then rests.

35

Measures 35-37 of the musical score. The treble clef staff features a melodic line with a key signature change to one flat (Bb). The bass clef staff is mostly silent.

**Draeludium et Fuga XIII - PIANO I**

3

38

tr

41

44

tr

48

tr

51

tr

55

tr

59

Measures 59-62 of the Draeludium. The right hand features a continuous eighth-note melody, while the left hand remains silent.

63

Measures 63-66 of the Draeludium. The right hand continues with eighth-note patterns, and the left hand remains silent.

67

Measures 67-70 of the Draeludium. The right hand includes a trill (tr) in measure 67 and continues with eighth-note patterns. The left hand has a few notes in measure 67.

71

Measures 71-74 of the Draeludium. The right hand continues with eighth-note patterns, and the left hand has a few notes in measure 71.

**Fuga**

Measures 1-4 of the Fuga. The right hand features a triplet (3) in measure 2 and a trill (tr) in measure 3. The left hand has a triplet (3) in measure 2.

7

Measures 5-8 of the Fuga. The right hand continues with eighth-note patterns, and the left hand has a trill (tr) in measure 6.

11

15

20

24

28

32

6

## Draeludium et Fuga XIII - PIANO I

36

Measures 36-39 of the musical score. The system consists of two staves. The right staff begins with a treble clef and a key signature of one flat (B-flat). Measure 36 contains a whole rest. Measure 37 features a descending eighth-note scale starting on G4. Measure 38 continues the descending eighth-note scale. Measure 39 shows a continuation of the descending eighth-note scale, ending with a half note G4.

40

Measures 40-43 of the musical score. The system consists of two staves. The right staff begins with a treble clef and a key signature of one flat (B-flat). Measure 40 features a descending eighth-note scale starting on G4, with a sharp sign above the first measure. Measure 41 continues the descending eighth-note scale. Measure 42 shows a continuation of the descending eighth-note scale. Measure 43 features a continuation of the descending eighth-note scale, ending with a half note G4.

44

Measures 44-48 of the musical score. The system consists of two staves. The right staff begins with a treble clef and a key signature of one flat (B-flat). Measure 44 features a descending eighth-note scale starting on G4, with a sharp sign above the first measure. Measure 45 continues the descending eighth-note scale. Measure 46 shows a continuation of the descending eighth-note scale. Measure 47 features a continuation of the descending eighth-note scale. Measure 48 features a continuation of the descending eighth-note scale, ending with a half note G4.

49

Measures 49-53 of the musical score. The system consists of two staves. The right staff begins with a treble clef and a key signature of one flat (B-flat). Measure 49 features a descending eighth-note scale starting on G4. Measure 50 continues the descending eighth-note scale. Measure 51 shows a continuation of the descending eighth-note scale. Measure 52 features a continuation of the descending eighth-note scale. Measure 53 features a continuation of the descending eighth-note scale, ending with a half note G4.

54

Measures 54-57 of the musical score. The system consists of two staves. The right staff begins with a treble clef and a key signature of one flat (B-flat). Measure 54 features a descending eighth-note scale starting on G4. Measure 55 continues the descending eighth-note scale. Measure 56 shows a continuation of the descending eighth-note scale. Measure 57 features a continuation of the descending eighth-note scale, ending with a half note G4.

58

Measures 58-61 of the musical score. The system consists of two staves. The right staff begins with a treble clef and a key signature of one flat (B-flat). Measure 58 features a descending eighth-note scale starting on G4. Measure 59 continues the descending eighth-note scale. Measure 60 shows a continuation of the descending eighth-note scale. Measure 61 features a continuation of the descending eighth-note scale, ending with a half note G4.

# Praeludium et Fuga XIII - PIANO I

7

62

66

71

75

79