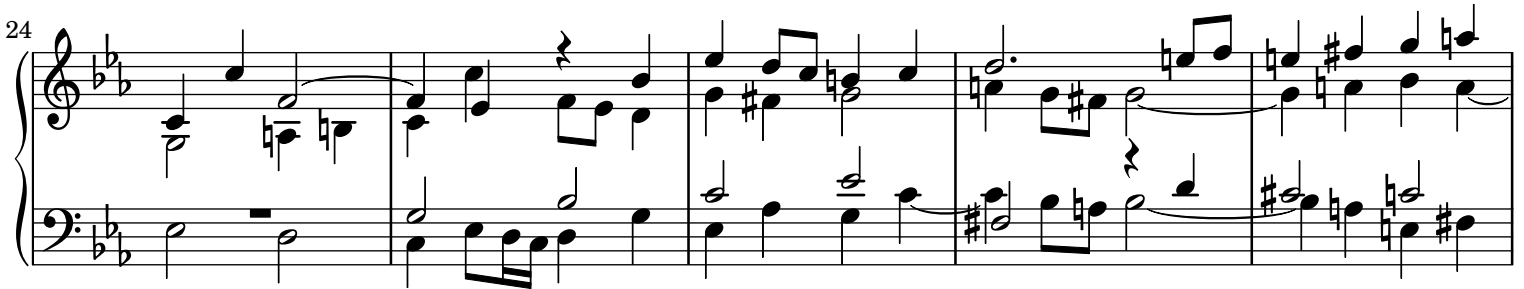
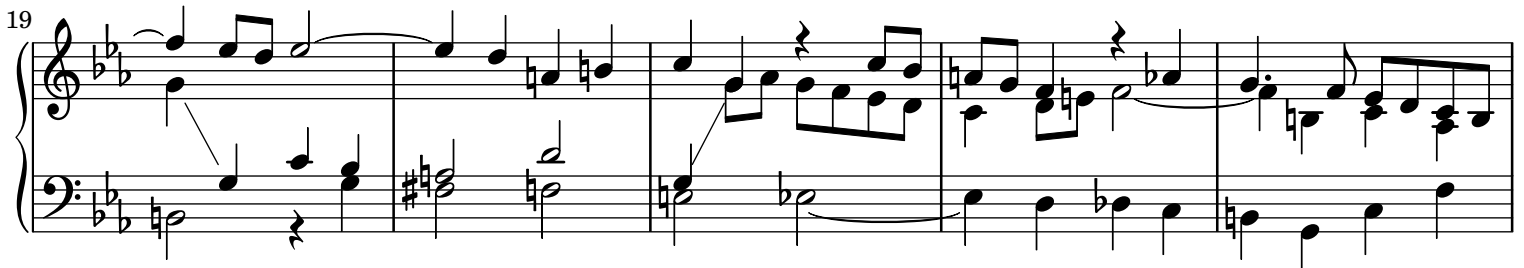
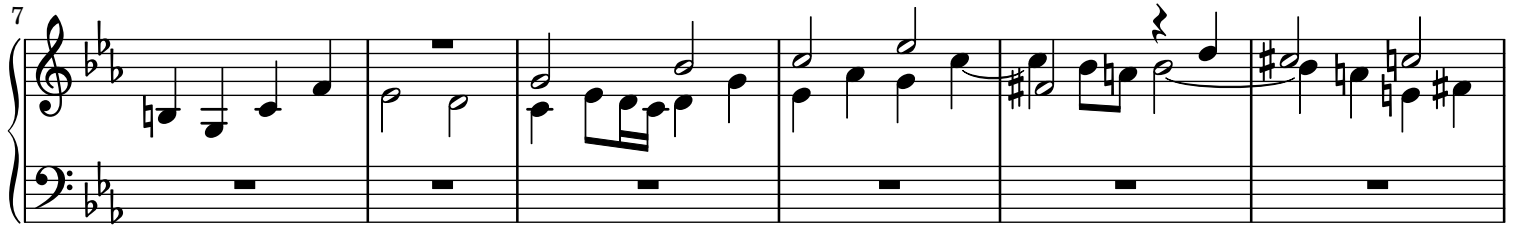


Ricercar a 6

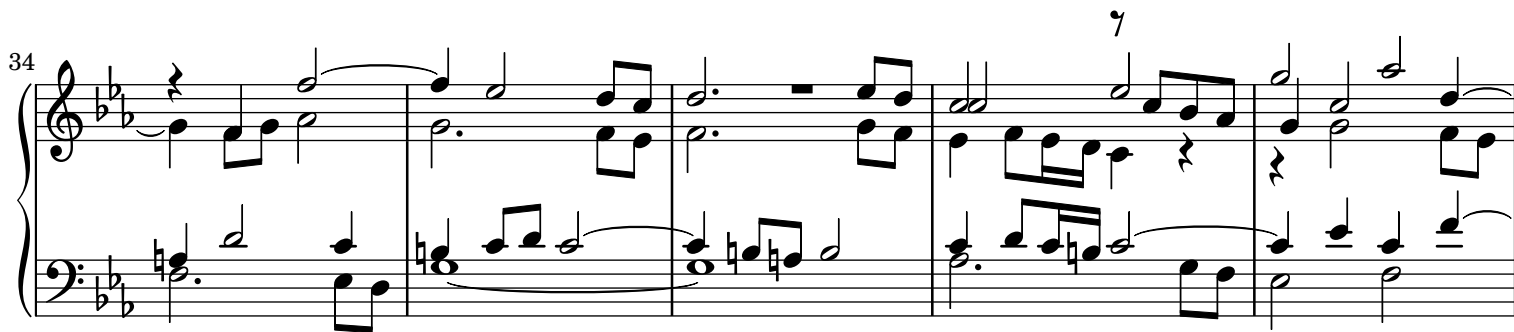
J. S. Bach

Piano Transcription by Ruoshi Sun

BWV 1079



34



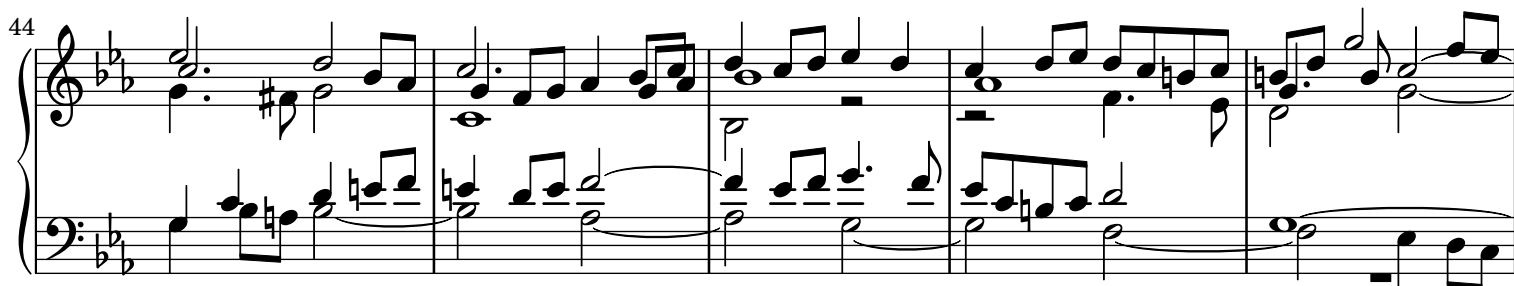
System 34-38: This system contains five measures of music. The key signature has two flats (B-flat and E-flat). The melody in the treble clef begins with a quarter rest, followed by eighth and quarter notes. The bass line features a dotted half note, eighth notes, and quarter notes. A fermata is placed over the final measure of this system.

39



System 39-43: This system contains five measures. The melody continues with eighth and quarter notes, including a triplet of eighth notes in measure 40. The bass line consists of quarter and eighth notes. A fermata is placed over the final measure of this system.

44



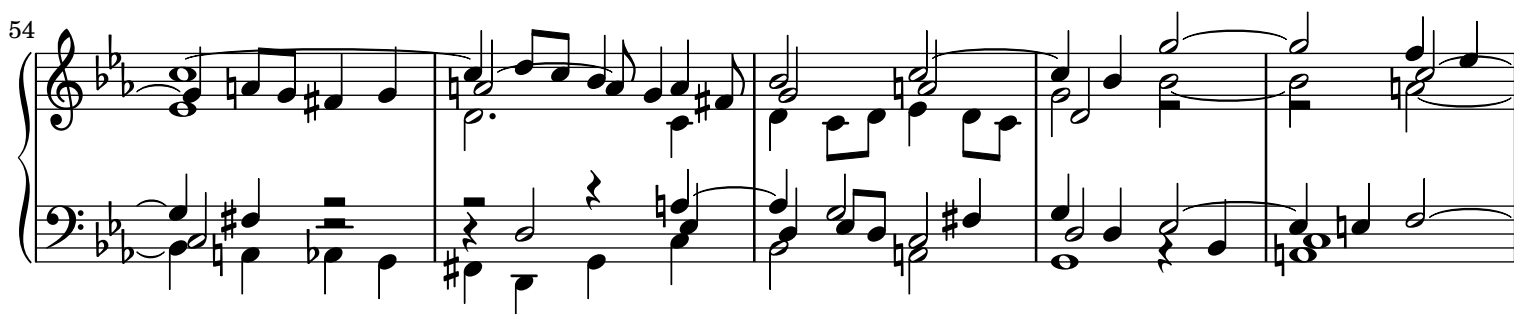
System 44-48: This system contains five measures. The melody features a half note with a sharp sign (F#) in measure 44, followed by eighth and quarter notes. The bass line continues with quarter and eighth notes. A fermata is placed over the final measure of this system.

49



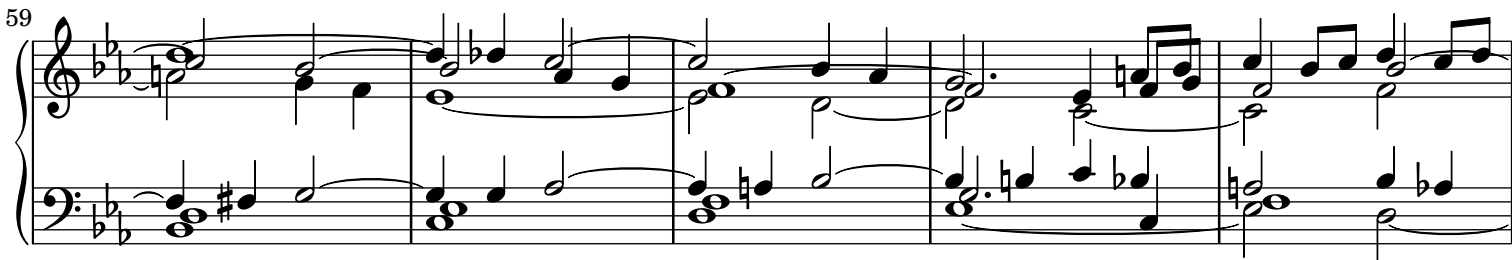
System 49-53: This system contains five measures. The melody includes a half note with a sharp sign (F#) in measure 49, followed by eighth and quarter notes. The bass line features a half note with a sharp sign (F#) in measure 50, followed by quarter and eighth notes. A fermata is placed over the final measure of this system.

54

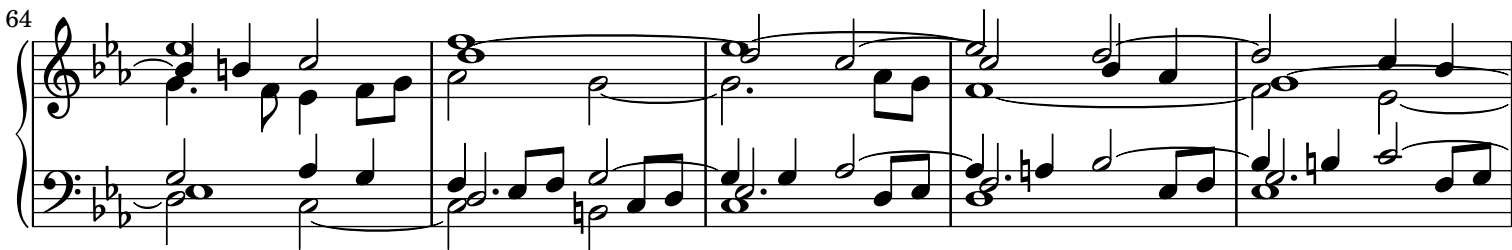


System 54-58: This system contains five measures. The melody begins with a half note with a sharp sign (F#), followed by eighth and quarter notes. The bass line features a half note with a sharp sign (F#) in measure 54, followed by quarter and eighth notes. A fermata is placed over the final measure of this system.

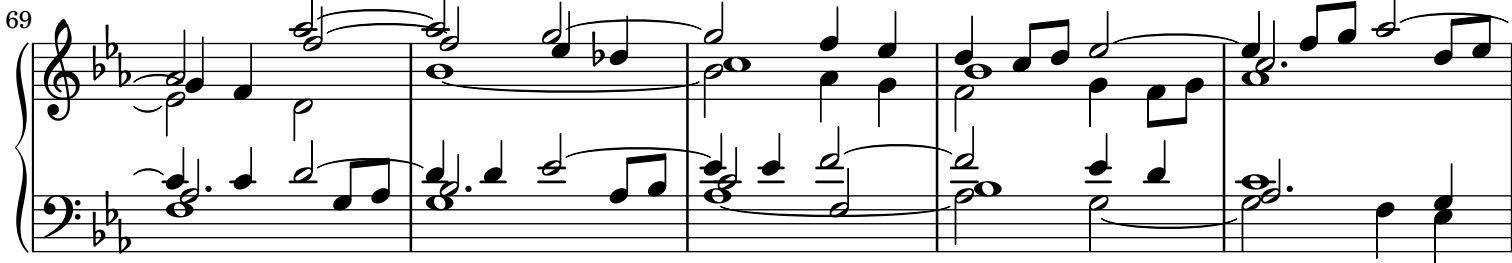
59



64



69



74



80



85



90

Measures 90-94 of a musical score in B-flat major (two flats). The right hand features a melodic line with eighth and sixteenth notes, often beamed together, and includes trills in measures 91 and 94. The left hand provides a harmonic accompaniment with chords and moving lines, including a trill in measure 91. The system concludes with a repeat sign.

95

Measures 95-99 of the musical score. The right hand continues the melodic development with various note values and rests. The left hand maintains a steady accompaniment with chords and moving lines. The system concludes with a repeat sign.

100

Measures 100-103 of the musical score. The right hand features a more active melodic line with frequent sixteenth notes. The left hand provides a consistent accompaniment with chords and moving lines. The system concludes with a repeat sign.

104

Measures 104-107 of the musical score. The right hand continues with a melodic line featuring eighth and sixteenth notes. The left hand provides a harmonic accompaniment with chords and moving lines. The system concludes with a repeat sign.

108

Measures 108-111 of the musical score. The right hand features a melodic line with eighth and sixteenth notes, including a trill in measure 109. The left hand provides a harmonic accompaniment with chords and moving lines. The system concludes with a repeat sign.

112

Measures 112-115 of the musical score. The right hand continues the melodic development with eighth and sixteenth notes. The left hand provides a harmonic accompaniment with chords and moving lines. The system concludes with a repeat sign.

116

Measures 116-119 of a musical score in B-flat major. The treble staff features a melody with eighth and sixteenth notes, including trills and grace notes. The bass staff provides a harmonic accompaniment with chords and moving lines. Measure 119 ends with a repeat sign.

120

Measures 120-123 of the musical score. The treble staff continues the melodic line with various ornaments. The bass staff maintains the accompaniment pattern. Measure 123 concludes with a repeat sign.

124

Measures 124-127 of the musical score. The treble staff shows a more active melodic line with frequent trills. The bass staff continues with a steady accompaniment. Measure 127 ends with a repeat sign.

128

Measures 128-131 of the musical score. The treble staff features a melodic line with trills and grace notes. The bass staff provides a consistent accompaniment. Measure 131 ends with a repeat sign.

132

Measures 132-135 of the musical score. The treble staff continues the melodic development with trills. The bass staff maintains the accompaniment. Measure 135 ends with a repeat sign.

136

Measures 136-139 of a musical score in B-flat major. The right hand features a melodic line with eighth and sixteenth notes, while the left hand provides a steady eighth-note accompaniment. Measure 139 includes a half-note chord in the right hand.

140

Measures 140-143. The right hand continues the melodic development with various note values and rests. The left hand maintains the eighth-note accompaniment pattern.

144

Measures 144-147. Measure 144 features a complex right-hand passage with many beamed sixteenth notes. Measures 145-147 show a more relaxed right-hand melody with longer note values.

148

Measures 148-151. The right hand has a melodic line with some rests and ties. The left hand continues with the eighth-note accompaniment.

152

Measures 152-155. The right hand features a continuous eighth-note melody. The left hand has a more varied accompaniment with some longer notes and rests.

156

Measures 156-159. The right hand has a melodic line with some rests and ties. The left hand continues with the eighth-note accompaniment.

160

Measures 160-164 of a musical score. The key signature has three flats (B-flat, E-flat, A-flat). The melody in the right hand features a series of eighth and sixteenth notes, often beamed together, with some notes tied across measures. The left hand provides a steady accompaniment with eighth notes and some chords. Measure 164 ends with a fermata over the final chord.

165

Measures 165-169 of a musical score. The melody continues with more complex rhythmic patterns, including triplets and sixteenth notes. The left hand has some rests in measures 165 and 166, then resumes with eighth notes. Measure 169 ends with a fermata.

170

Measures 170-173 of a musical score. The right hand features a prominent eighth-note melody. The left hand has a more active line with eighth notes and some chords. Measure 173 ends with a fermata.

174

Measures 174-177 of a musical score. This section includes a key signature change to two flats (B-flat, E-flat) in measure 174. The melody in the right hand is characterized by eighth-note runs. The left hand has some rests in measures 174 and 175, then continues with eighth notes. Measure 177 ends with a fermata.

178

Measures 178-182 of a musical score. The melody in the right hand continues with eighth-note patterns. The left hand has a more active line with eighth notes and some chords. Measure 182 ends with a fermata.

183

Measures 183-187 of a musical score in B-flat major (two flats). The music is written for piano in a 4/4 time signature. The right hand features a melody with eighth and sixteenth notes, often beamed together, and includes trills. The left hand provides a harmonic accompaniment with chords and moving lines. Measure 187 ends with a repeat sign.

188

Measures 188-191 of the musical score. The right hand continues the melodic line with various note values and rests. The left hand maintains the accompaniment. Measure 191 concludes with a repeat sign.

192

Measures 192-195 of the musical score. The right hand has a more active melodic line with frequent sixteenth notes. The left hand accompaniment includes some chords with accidentals, such as a sharp in measure 194. Measure 195 ends with a repeat sign.

196

Measures 196-200 of the musical score. The right hand features a melodic line with trills and slurs. The left hand accompaniment includes a key signature change to C major (no sharps or flats) in measure 200, indicated by a natural sign on the F. Measure 200 ends with a repeat sign.

201

Measures 201-205 of the musical score. The right hand has a melodic line with slurs and trills. The left hand accompaniment includes chords and moving lines. Measure 205 ends with a double bar line.