

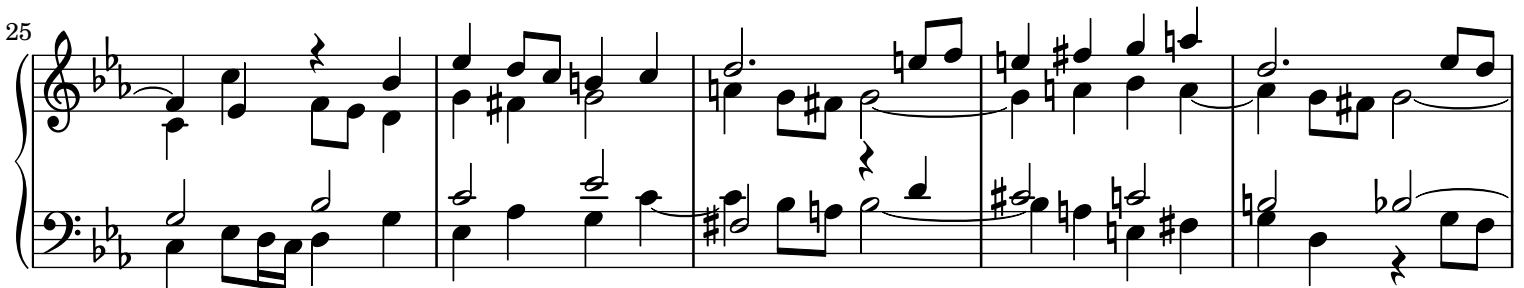
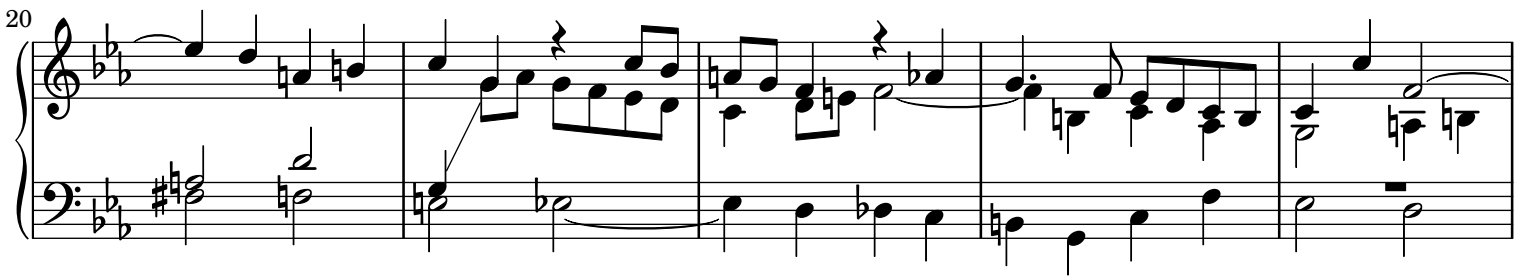
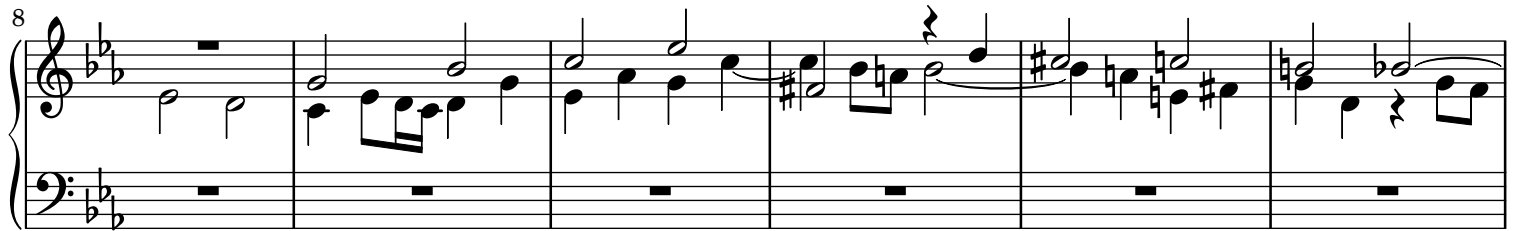
# Ricercar a 6

## The Musical Offering

BWV 1079

Johann Sebastian Bach (1747)

Arr. Ruoshi Sun (2018)



30

First system of a piano score, measures 30-34. The key signature has two flats (B-flat and E-flat). The right hand features a melodic line with eighth and sixteenth notes, including a triplet in measure 32. The left hand provides a harmonic accompaniment with chords and moving lines.

35

Second system of a piano score, measures 35-39. The right hand continues the melodic development with various note values and rests. The left hand maintains a steady accompaniment pattern.

40

Third system of a piano score, measures 40-44. The right hand shows more complex rhythmic patterns, including sixteenth-note runs. The left hand accompaniment includes some longer note values.

45

Fourth system of a piano score, measures 45-49. The right hand features a series of eighth-note chords and moving lines. The left hand accompaniment consists of chords and moving bass lines.

50

Fifth system of a piano score, measures 50-54. The right hand continues with a melodic line, incorporating some triplet figures. The left hand accompaniment is active with moving lines.

55

Sixth system of a piano score, measures 55-59. The right hand features a melodic line with various note values and rests. The left hand accompaniment includes some longer note values and rests.

61

System 61-66: This system contains six measures of music. The melody in the right hand features a series of eighth and sixteenth notes, often beamed together, with some measures containing triplets. The left hand provides a steady accompaniment with eighth and sixteenth notes. The key signature has two flats (B-flat and E-flat).

67

System 67-72: This system contains six measures of music. The right hand continues the melodic line with various note values and rests. The left hand maintains the accompaniment pattern. The key signature remains two flats.

73

System 73-78: This system contains six measures of music. The right hand has more complex rhythmic patterns, including some measures with eighth-note triplets. The left hand continues with the accompaniment. The key signature remains two flats.

79

System 79-84: This system contains six measures of music. The right hand features a mix of quarter and eighth notes. The left hand continues the accompaniment. The key signature remains two flats.

85

System 85-90: This system contains six measures of music. The right hand has a melodic line with some rests. The left hand continues the accompaniment. The key signature remains two flats.

91

System 91-96: This system contains six measures of music. The right hand continues the melodic development. The left hand continues the accompaniment. The key signature remains two flats.

97

System 1 (measures 97-101) of a piano piece. The key signature has two flats (B-flat and E-flat). The melody in the right hand features eighth and sixteenth notes with various accidentals (sharps and naturals). The left hand provides a harmonic accompaniment with chords and moving lines.

102

System 2 (measures 102-106). The right hand continues with a melodic line, and the left hand features a more active bass line with eighth notes and chords.

107

System 3 (measures 107-111). The right hand has a melodic line with some rests, while the left hand plays a steady eighth-note accompaniment.

112

System 4 (measures 112-116). The right hand features a more complex melodic line with many accidentals. The left hand continues with a rhythmic accompaniment.

117

System 5 (measures 117-120). The right hand has a melodic line with some rests and accidentals. The left hand plays a rhythmic accompaniment with eighth notes.

121

System 6 (measures 121-124). The right hand features a melodic line with some rests and accidentals. The left hand plays a rhythmic accompaniment with eighth notes.

125

Measures 125-128 of a musical score in B-flat major. The right hand features a melody with eighth and sixteenth notes, while the left hand provides a bass line with eighth notes and rests. Measure 128 ends with a double bar line.

129

Measures 129-132 of a musical score in B-flat major. The right hand continues the melody with eighth notes and rests, while the left hand plays a steady eighth-note bass line. Measure 132 ends with a double bar line.

133

Measures 133-136 of a musical score in B-flat major. The right hand features a more active melody with eighth and sixteenth notes, while the left hand continues the eighth-note bass line. Measure 136 ends with a double bar line.

137

Measures 137-140 of a musical score in B-flat major. The right hand has a melody with eighth notes and rests, while the left hand plays a steady eighth-note bass line. Measure 140 ends with a double bar line.

141

Measures 141-144 of a musical score in B-flat major. The right hand features a melody with eighth and sixteenth notes, while the left hand continues the eighth-note bass line. Measure 144 ends with a double bar line.

145

Measures 145-148 of a musical score in B-flat major. The right hand has a melody with eighth notes and rests, while the left hand plays a steady eighth-note bass line. Measure 148 ends with a double bar line.

149

Measures 149-152 of a musical score in B-flat major. The right hand features a melodic line with eighth and sixteenth notes, while the left hand provides a harmonic accompaniment with chords and moving lines. Measure 152 ends with a repeat sign.

153

Measures 153-156 of a musical score in B-flat major. The right hand continues the melodic development with various rests and note values. The left hand maintains a steady accompaniment. Measure 156 ends with a repeat sign.

157

Measures 157-160 of a musical score in B-flat major. The right hand features a more active melodic line with slurs and ties. The left hand continues with a supportive accompaniment. Measure 160 ends with a repeat sign.

161

Measures 161-165 of a musical score in B-flat major. The right hand shows a melodic line with some chromatic movement. The left hand provides a consistent accompaniment. Measure 165 ends with a repeat sign.

166

Measures 166-170 of a musical score in B-flat major. The right hand features a melodic line with some chromatic movement. The left hand provides a consistent accompaniment. Measure 170 ends with a repeat sign.

171

Measures 171-175 of a musical score in B-flat major. The right hand features a melodic line with some chromatic movement. The left hand provides a consistent accompaniment. Measure 175 ends with a repeat sign.

175

179

184

189

194

200