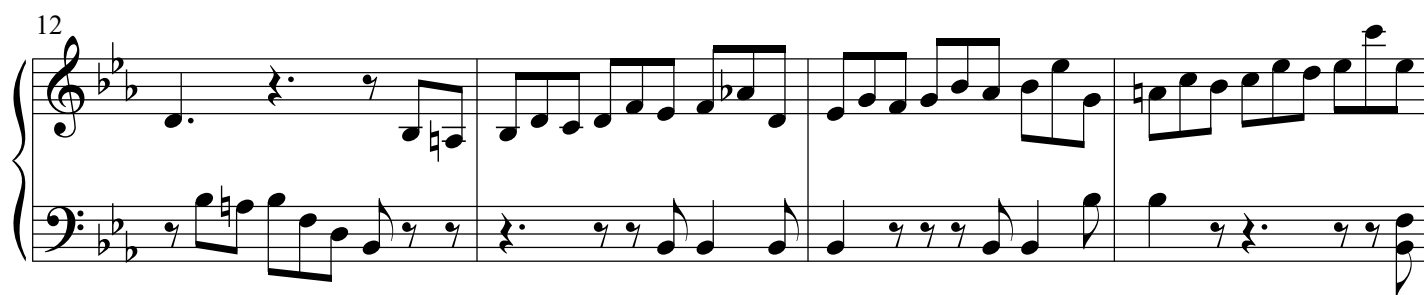
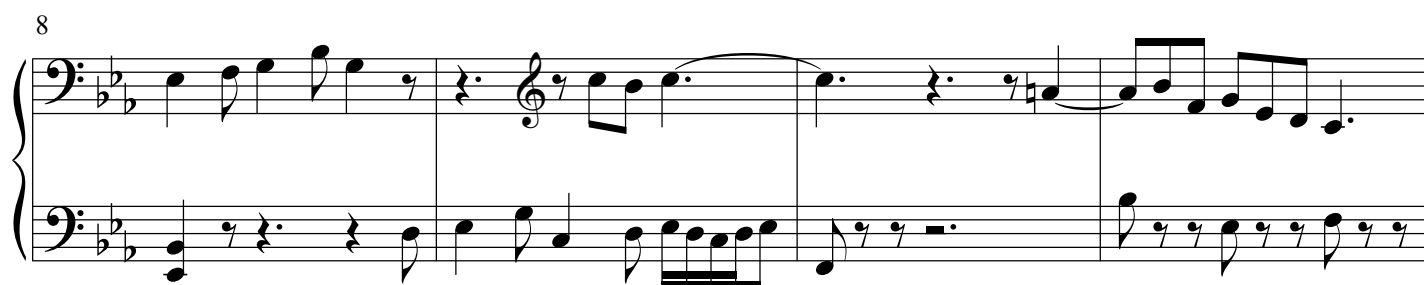


Praeludium et Fuga VII

BWV 876

J. SEBASTIAN BACH

PETER H. BESSELING



2

20

24

24

Musical score for 'The Rose Tree' in G major, 2/4 time. The score consists of two staves: a treble staff and a bass staff. The treble staff begins with a whole rest, followed by a half rest, and then a quarter rest. The bass staff begins with a quarter rest, followed by a half rest, and then a quarter rest. The melody in the treble staff is: G4 (quarter), A4 (quarter), B4 (quarter), C5 (quarter), B4 (quarter), A4 (quarter), G4 (quarter). The bass staff provides a harmonic accompaniment: G3 (quarter), B2 (quarter), D3 (quarter), E3 (quarter), D3 (quarter), B2 (quarter), G2 (quarter).

28

28

Example 10 (continued)

32

32

32

36

56

56

40

40

40

44

Measures 44-47 of the piano part. Measure 44 features a treble clef with a key signature of three flats and a sharp (F#), and a bass clef. The treble staff has a quarter rest, followed by eighth notes G4, A4, Bb4, and C5. The bass staff has a quarter rest, followed by eighth notes D4, E4, F4, and G4. Measures 45-47 consist of whole rests in both staves.

48

Measures 48-51 of the piano part. Measures 48 and 49 are whole rests. Measure 50 has a treble staff with a half note G4 and a bass staff with a half note D4. Measure 51 has a treble staff with eighth notes G4, A4, Bb4, and C5, and a bass staff with eighth notes D4, E4, F4, and G4.

52

Measures 52-55 of the piano part. Measures 52 and 53 have treble staves with eighth notes G4, A4, Bb4, and C5, and bass staves with eighth notes D4, E4, F4, and G4. Measure 54 has a treble staff with a half note G4 and a bass staff with a half note D4. Measure 55 has a treble staff with eighth notes G4, A4, Bb4, and C5, and a bass staff with eighth notes D4, E4, F4, and G4.

56

Measures 56-59 of the piano part. Measures 56-59 consist of whole rests in both staves.

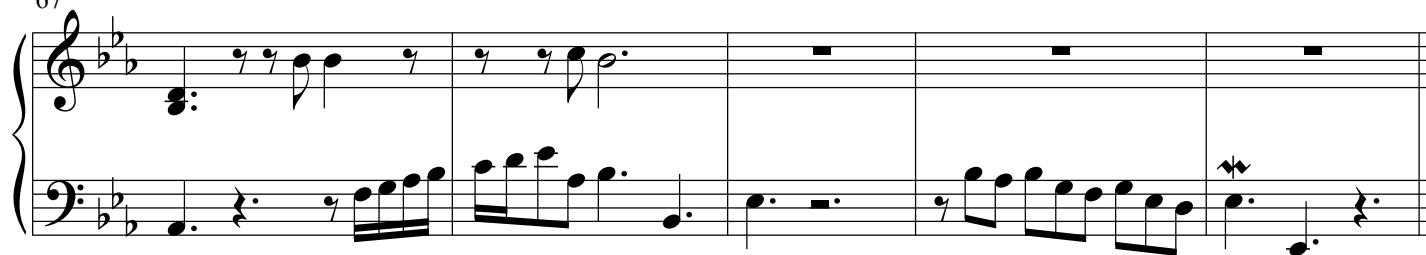
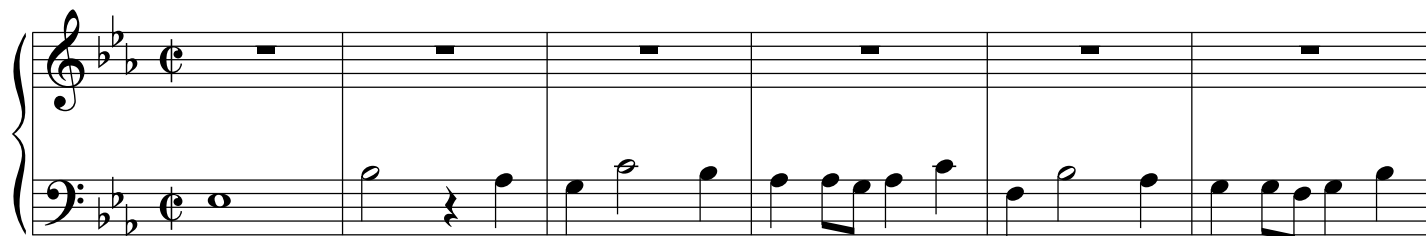
60

Measures 60-63 of the piano part. Measures 60-63 consist of whole rests in both staves.

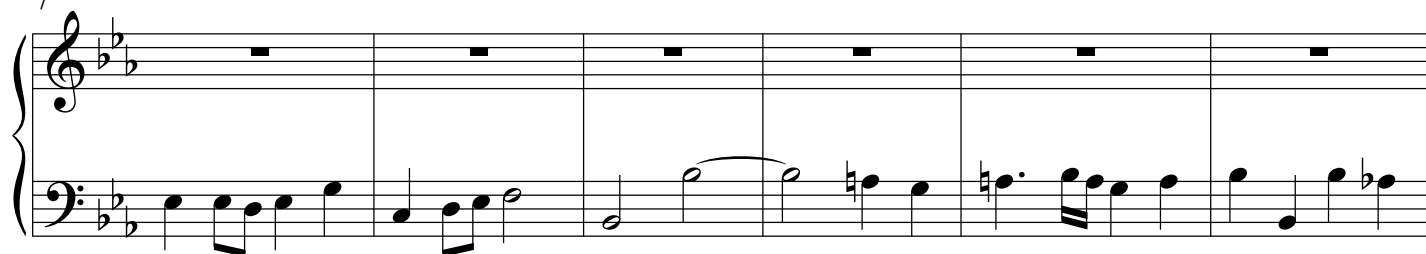
64

Measures 64-67 of the piano part. Measures 64-67 consist of whole rests in both staves.

67

**Fuga**

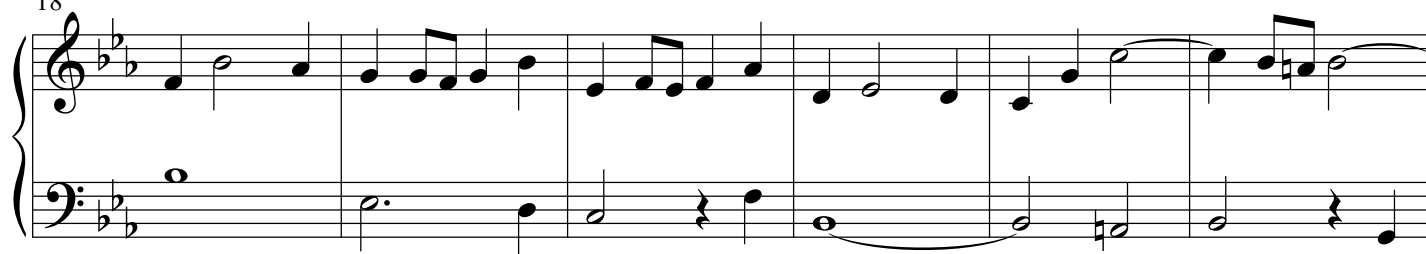
7



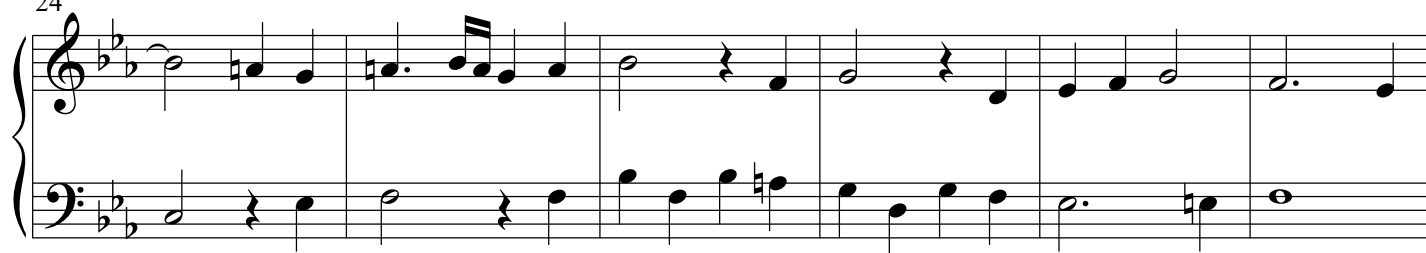
13



18



24



Praeludium et Fuga VII - PIANO II

5

30

This block contains measures 30 through 35 of the musical score. Measure 30 begins with a treble clef and a key signature of two flats (B-flat and E-flat). The melody in the treble staff starts on G4, moves to A4, then B-flat4, and continues with eighth and quarter notes. The bass staff provides a simple accompaniment with whole and half notes. Measures 31-35 continue the melody and accompaniment, with the melody ending on a whole note in measure 35.

41

The musical score for measures 41-45 of 'The Swan' by Camille Saint-Saëns. The score is in 3/4 time, key of B-flat major, and features a piano accompaniment. The melody is in the right hand, and the bass line is in the left hand. The music is characterized by a gentle, flowing melody with a prominent bass line.

46

51

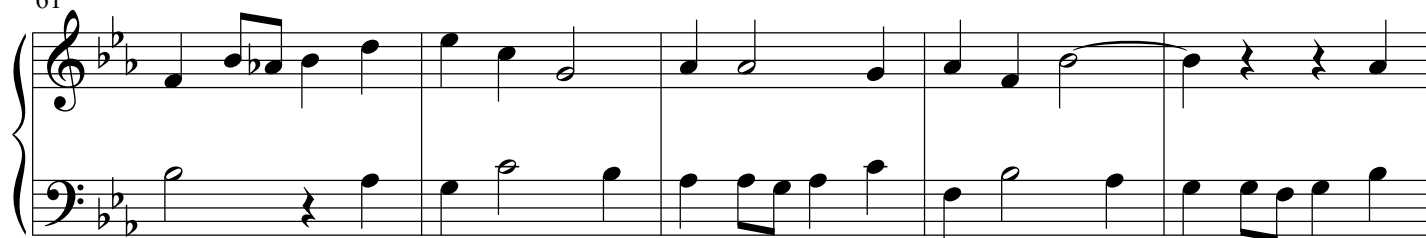
The musical score for measures 51-54 of 'The Swan' by Camille Saint-Saëns. The score is in 3/4 time, key of B-flat major, and features a piano accompaniment. The melody is in the right hand, and the bass line is in the left hand. The music is characterized by a flowing, lyrical style with many slurs and ties.

56

6

Draeludium et Fuga VII - PIANO II

61



66

