

Praeludium et Fuga IV

BWV 873

J. SEBASTIAN BACH

PETER H. BESSELING

4

7

10

13

16

Measures 16-18 of the piece. The key signature is three sharps (F#, C#, G#). The music is in 4/4 time. Measure 16 features a treble staff with a half note G#4, a quarter note A4, a dotted half note B4, and a quarter note C5, and a bass staff with a half note F#3, a quarter note G3, a dotted half note A3, and a quarter note B3. Measure 17 continues with a half note B4, a quarter note C5, a dotted half note D5, and a quarter note E5 in the treble, and a half note B3, a quarter note C4, a dotted half note D4, and a quarter note E4 in the bass. Measure 18 has a half note D5, a quarter note E5, a dotted half note F#5, and a quarter note G5 in the treble, and a half note E4, a quarter note F#4, a dotted half note G#4, and a quarter note A4 in the bass.

19

Measures 19-21. Measure 19: Treble has a half note G#4, a quarter note A4, a dotted half note B4, and a quarter note C5; Bass has a half note F#3, a quarter note G3, a dotted half note A3, and a quarter note B3. Measure 20: Treble has a half note B4, a quarter note C5, a dotted half note D5, and a quarter note E5; Bass has a half note B3, a quarter note C4, a dotted half note D4, and a quarter note E4. Measure 21: Treble has a half note D5, a quarter note E5, a dotted half note F#5, and a quarter note G5; Bass has a half note E4, a quarter note F#4, a dotted half note G#4, and a quarter note A4.

22

Measures 22-24. Measure 22: Treble has a half note G#4, a quarter note A4, a dotted half note B4, and a quarter note C5; Bass has a half note F#3, a quarter note G3, a dotted half note A3, and a quarter note B3. Measure 23: Treble has a half note B4, a quarter note C5, a dotted half note D5, and a quarter note E5; Bass has a half note B3, a quarter note C4, a dotted half note D4, and a quarter note E4. Measure 24: Treble has a half note D5, a quarter note E5, a dotted half note F#5, and a quarter note G5; Bass has a half note E4, a quarter note F#4, a dotted half note G#4, and a quarter note A4.

25

Measures 25-28. Measure 25: Treble has a half note G#4, a quarter note A4, a dotted half note B4, and a quarter note C5; Bass has a half note F#3, a quarter note G3, a dotted half note A3, and a quarter note B3. Measure 26: Treble has a half note B4, a quarter note C5, a dotted half note D5, and a quarter note E5; Bass has a half note B3, a quarter note C4, a dotted half note D4, and a quarter note E4. Measure 27: Treble has a half note D5, a quarter note E5, a dotted half note F#5, and a quarter note G5; Bass has a half note E4, a quarter note F#4, a dotted half note G#4, and a quarter note A4. Measure 28: Treble has a half note G#4, a quarter note A4, a dotted half note B4, and a quarter note C5; Bass has a half note F#3, a quarter note G3, a dotted half note A3, and a quarter note B3.

29

Measures 29-31. Measure 29: Treble has a half note G#4, a quarter note A4, a dotted half note B4, and a quarter note C5; Bass has a half note F#3, a quarter note G3, a dotted half note A3, and a quarter note B3. Measure 30: Treble has a half note B4, a quarter note C5, a dotted half note D5, and a quarter note E5; Bass has a half note B3, a quarter note C4, a dotted half note D4, and a quarter note E4. Measure 31: Treble has a half note D5, a quarter note E5, a dotted half note F#5, and a quarter note G5; Bass has a half note E4, a quarter note F#4, a dotted half note G#4, and a quarter note A4.

32

Measures 32-34. Measure 32: Treble has a half note G#4, a quarter note A4, a dotted half note B4, and a quarter note C5; Bass has a half note F#3, a quarter note G3, a dotted half note A3, and a quarter note B3. Measure 33: Treble has a half note B4, a quarter note C5, a dotted half note D5, and a quarter note E5; Bass has a half note B3, a quarter note C4, a dotted half note D4, and a quarter note E4. Measure 34: Treble has a half note D5, a quarter note E5, a dotted half note F#5, and a quarter note G5; Bass has a half note E4, a quarter note F#4, a dotted half note G#4, and a quarter note A4.

Praeludium et Fuga IV - PIANO II

3

35

38

41

44

47

50

53

Measures 53-54 of the Praeludium. The key signature is three sharps (F#, C#, G#). Measure 53 features a treble clef with a whole note G#4 and a bass clef with a continuous eighth-note pattern. Measure 54 continues the treble melody and the bass pattern.

55

Measures 55-57 of the Praeludium. Measure 55 has a treble clef with a half note G#4 and a bass clef with eighth notes. Measure 56 continues the treble melody and the bass pattern. Measure 57 features a treble clef with a half note G#4 and a bass clef with eighth notes.

58

Measures 58-59 of the Praeludium. Measure 58 has a treble clef with a half note G#4 and a bass clef with eighth notes. Measure 59 continues the treble melody and the bass pattern.

60

Measures 60-62 of the Praeludium. Measure 60 has a treble clef with a half note G#4 and a bass clef with eighth notes. Measure 61 continues the treble melody and the bass pattern. Measure 62 features a treble clef with a half note G#4 and a bass clef with eighth notes.

Fuga

Measures 1-4 of the Fuga. The key signature is three sharps (F#, C#, G#). The time signature is 12/8. Measure 1 has a treble clef with a whole rest and a bass clef with eighth notes. Measure 2 continues the treble melody and the bass pattern. Measure 3 features a treble clef with a whole rest and a bass clef with eighth notes. Measure 4 continues the treble melody and the bass pattern.

5

Measures 5-7 of the Fuga. Measure 5 has a treble clef with a half note G#4 and a bass clef with eighth notes. Measure 6 continues the treble melody and the bass pattern. Measure 7 features a treble clef with a half note G#4 and a bass clef with eighth notes.

Praeludium et Fuga IV - PIANO II

5

8

Measures 8-10 in bass clef, key of D major. Measure 8 features a half note D4 with a slur over it, followed by eighth notes E4, F#4, G4, and A4. Measure 9 continues with eighth notes B4, C5, D5, and E5. Measure 10 has a half note F#4, followed by eighth notes G4, A4, and B4.

11

Measures 11-13 in bass clef, key of D major. Measure 11 has a half note D4 with a slur, followed by eighth notes E4, F#4, G4, and A4. Measure 12 continues with eighth notes B4, C5, D5, and E5. Measure 13 has a half note F#4, followed by eighth notes G4, A4, and B4.

14

Measures 14-16 in bass clef, key of D major. Measure 14 has a half note D4 with a slur, followed by eighth notes E4, F#4, G4, and A4. Measure 15 continues with eighth notes B4, C5, D5, and E5. Measure 16 has a half note F#4, followed by eighth notes G4, A4, and B4.

17

Measures 17-19 in treble and bass clefs, key of D major. Measure 17 has a half note D4 with a slur, followed by eighth notes E4, F#4, G4, and A4. Measure 18 continues with eighth notes B4, C5, D5, and E5. Measure 19 has a half note F#4, followed by eighth notes G4, A4, and B4.

20

Measures 20-22 in treble and bass clefs, key of D major. Measure 20 has a half note D4 with a slur, followed by eighth notes E4, F#4, G4, and A4. Measure 21 continues with eighth notes B4, C5, D5, and E5. Measure 22 has a half note F#4, followed by eighth notes G4, A4, and B4.

23

Measures 23-25 in treble and bass clefs, key of D major. Measure 23 has a half note D4 with a slur, followed by eighth notes E4, F#4, G4, and A4. Measure 24 continues with eighth notes B4, C5, D5, and E5. Measure 25 has a half note F#4, followed by eighth notes G4, A4, and B4.

26

Measures 26-28 of the Praeludium et Fuga IV - PIANO II. The key signature is three sharps (F#, C#, G#). Measure 26 features a treble staff with eighth-note runs and a bass staff with a descending eighth-note line. Measure 27 has a treble staff with a half-note melody and a bass staff with a whole rest. Measure 28 continues the treble staff melody and the bass staff with eighth-note runs.

29

Measures 29-31 of the Praeludium et Fuga IV - PIANO II. Measure 29 shows a treble staff with a half-note melody and a bass staff with eighth-note runs. Measure 30 features a treble staff with a half-note melody and a bass staff with a half-note melody. Measure 31 continues the treble staff melody and the bass staff with eighth-note runs.

32

Measures 32-34 of the Praeludium et Fuga IV - PIANO II. Measure 32 shows a treble staff with eighth-note runs and a bass staff with a half-note melody. Measure 33 features a treble staff with a half-note melody and a bass staff with a half-note melody. Measure 34 continues the treble staff melody and the bass staff with eighth-note runs.

35

Measures 35-37 of the Praeludium et Fuga IV - PIANO II. Measure 35 shows a treble staff with a half-note melody and a bass staff with eighth-note runs. Measure 36 features a treble staff with a half-note melody and a bass staff with eighth-note runs. Measure 37 continues the treble staff melody and the bass staff with eighth-note runs.

38

Measures 38-40 of the Praeludium et Fuga IV - PIANO II. Measure 38 shows a treble staff with eighth-note runs and a bass staff with a half-note melody. Measure 39 features a treble staff with a half-note melody and a bass staff with a half-note melody. Measure 40 continues the treble staff melody and the bass staff with eighth-note runs.

41

Measures 41-43 of the Praeludium et Fuga IV - PIANO II. Measure 41 shows a treble staff with eighth-note runs and a bass staff with a half-note melody. Measure 42 features a treble staff with a half-note melody and a bass staff with eighth-note runs. Measure 43 continues the treble staff melody and the bass staff with eighth-note runs.

Praeludium et Fuga IV - PIANO II

7

44

47

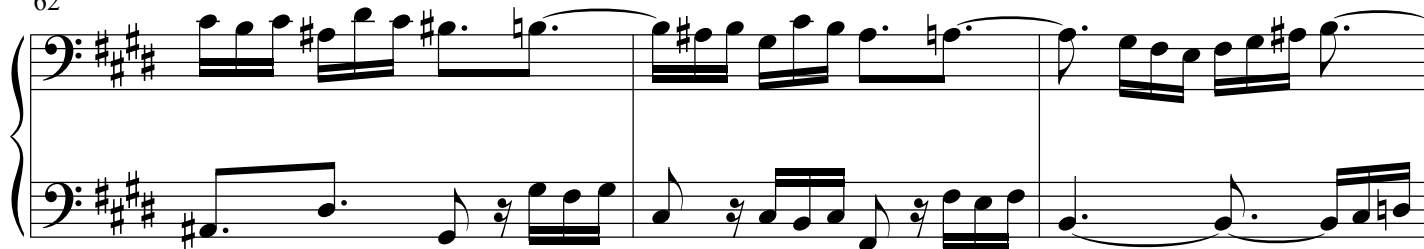
50

53

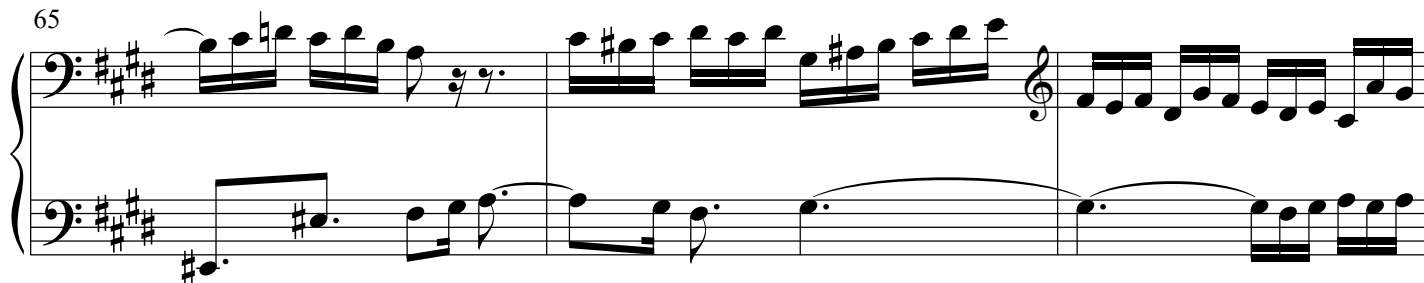
56

59

62



65



68

