

Tenor

Missa Solemnis

in honorem

Sancti Michaelis Archangeli

Jorge Braun (- 1957)

Moderato

Kyrie

8 *p* Ky - ri-e e - le - i-son, Ky - ri-e e - *mf* *cresc.*

6 *rit.* **Andantino**
2
dim. le - i - son e - le - i - son *p* e - le - i - son.

13 *Solo*
p Chris - te e - le - i - son. *mf* Chris - te e - le - i - son

19 *rit.* **Con moto**
dim. Chris - te Chris - te, e - le - i - son.

24 *Tutti*
mf Ky - ri-e e - le - i-son, Ky - ri-e e - le - i-son, e - le - i-son, e - *f* *cresc.*

30 *a tempo*
mf le - i - son, Ky - ri-e e - le - i - *dim.*

34 *rit.*
p son, Ky - ri-e e - le - i - son. *pp*

Missa Solemnis in honorem Sancti Michaelis Archangeli

Tenor

Andante con moto

Gloria

f Et in ter - ra pax ho - mi - ni - bus *p* bo - næ vo - lun -

f ta - tis. Lau - da - mus te, be - ne - di - ci - mus te, *p* a - do - ra - mus

ff glo - ri - fi - ca - - - mus te. *rit.* **Più lento** 4

Con moto *f* Pro - pter ma - gnam glo - ri - am ma - gnam glo - ri - am *cresc.*

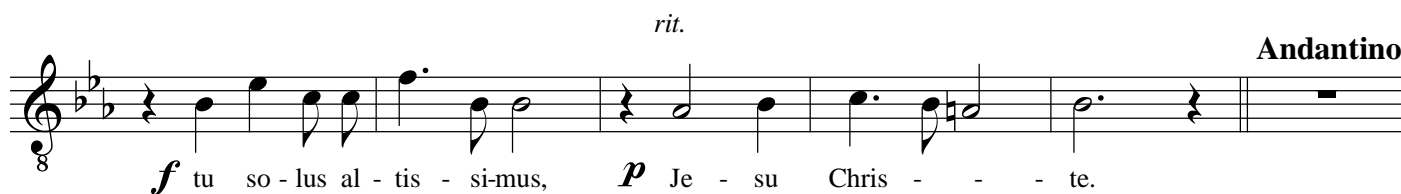
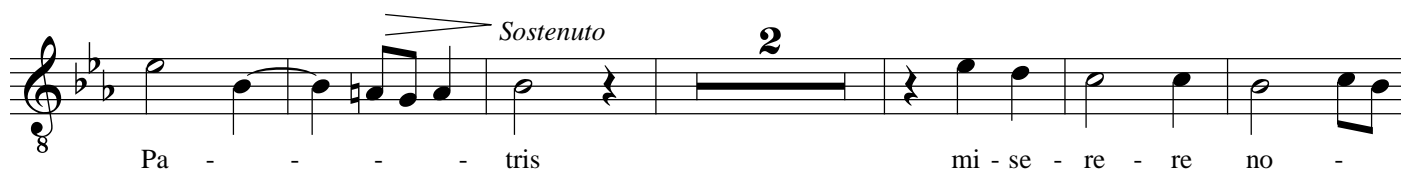
tu - - am. *dim.* *f* Do - mi - ne De - us Rex cœ - les - tis *cresc.*

De - us Pa - ter om - ni - tens, *dim.* *rit.* *Più lento* *mf* Do - mi - ne Fi - li u - ni - *dim.*

ge - ni - te *p* Je - su Je - su Chris - te, *a tempo* Do - mi - ne *mf* *cresc.*

rit. **Moderato** 6
De - us, A - gnus De - i, *p* Fi - li - us Pa - - - tris.

Tenor

Poco più mosso

Missa Solemnis in honorem Sancti Michaelis Archangeli

Tenor

Moderato assai

Credo

mf Pa - trem om - ni - po - ten - tem, fac - to - rem cœ - li et ter - ræ vi - si -

bi - li - um om - ni - um *f* et in u - num Do - mi - num *mf* Je - sum Chris - tum

Fi - li - um De - i u - ni - ge - tum. *mf* Et ex Pa - tre na - tum an - te om - ni - a
dim. *cresc.*

sæ - cu - la. *f* De - um ve - rum de De - o ve - ro.
cresc. *dim.*

mf Ge - ni - tum non fa - ctum con - sub - stan - ti - a - lem Pa - tri per quem om - ni - a fa - cta
cresc. *dim.*

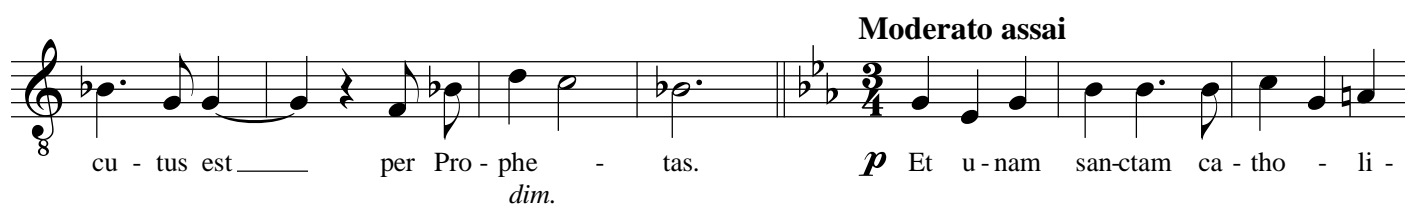
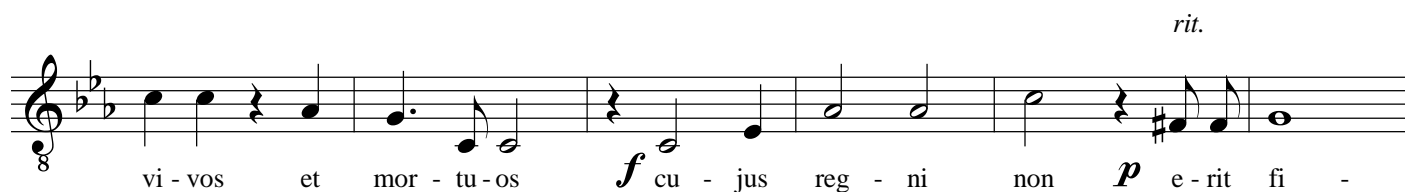
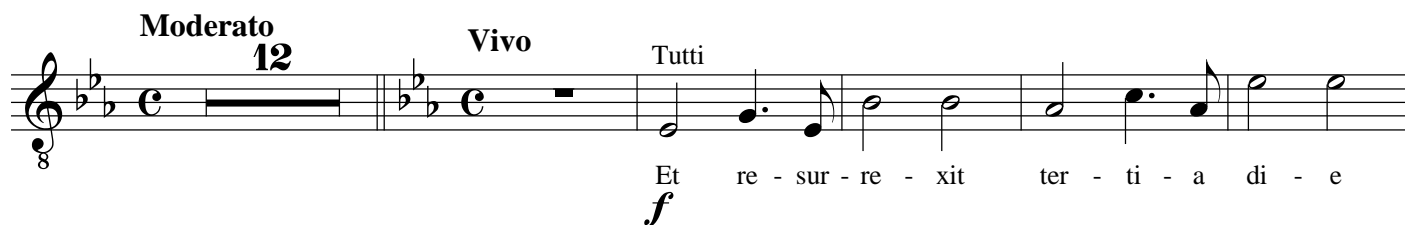
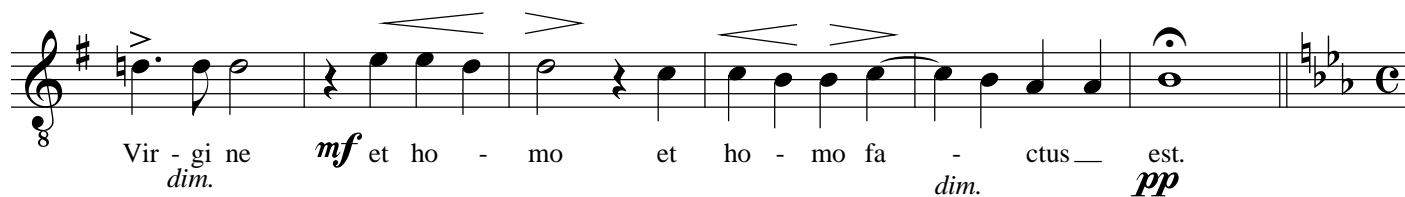
sunt, *f* des - cen - dit, des - cen - dit, des -
dim. *mf*

rit. cen - dit de cœ - - - lis. *p* Et in - car -
dim. *pp*

na - tus est de Spi - ri - tu San - cto ex Ma - ri - a
p *mf* *cresc.* *f*

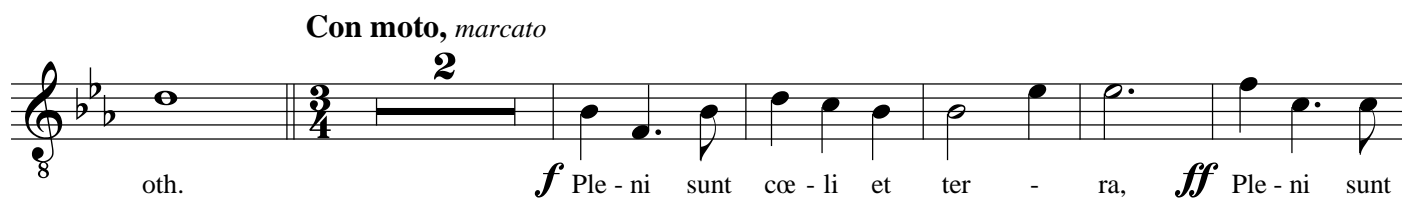
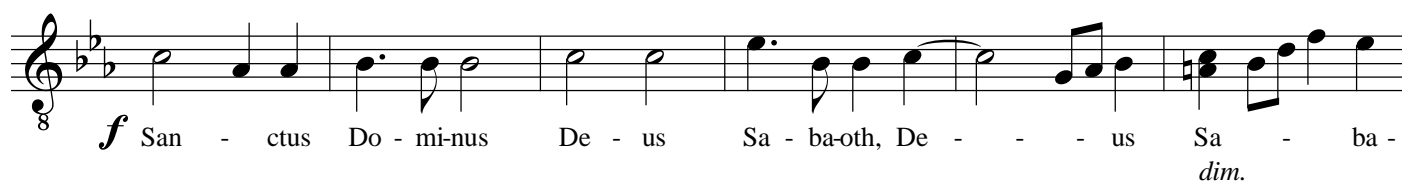
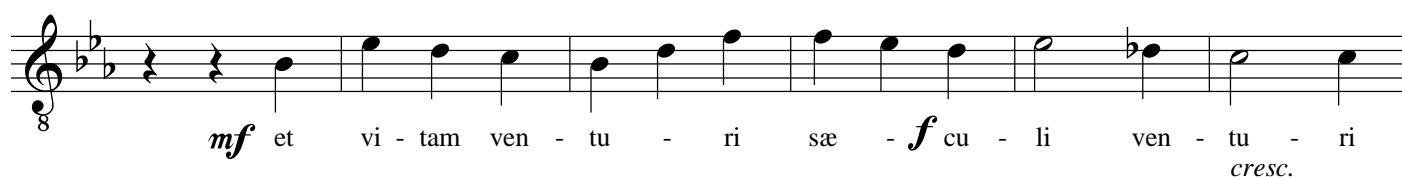
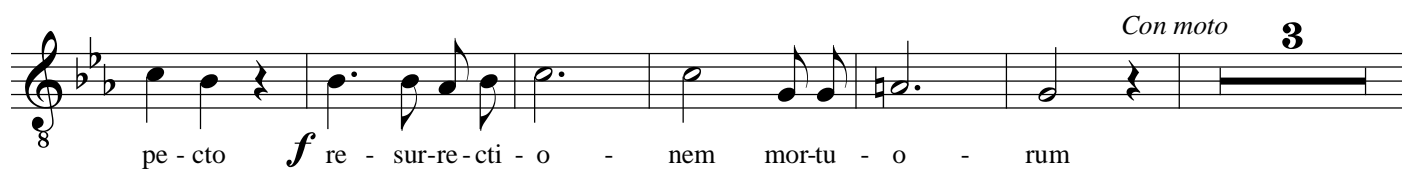
Adagio espressivo Solo

Tenor

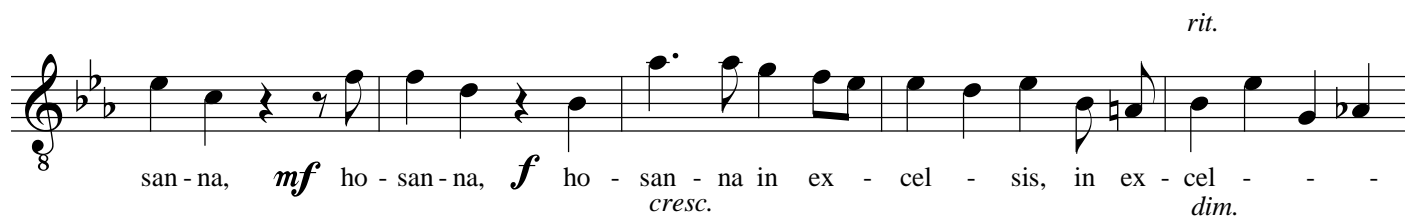


Missa Solemnis in honorem Sancti Michaelis Archangeli

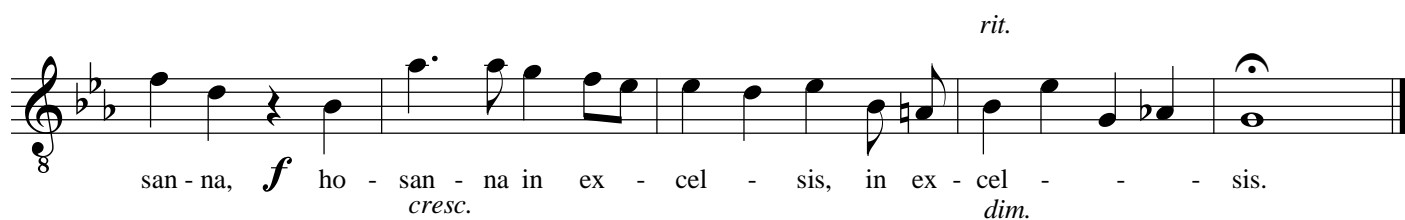
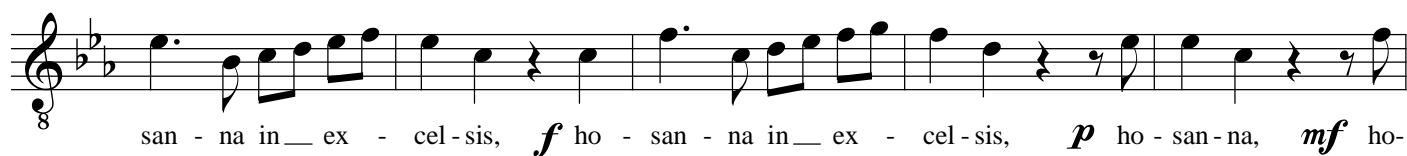
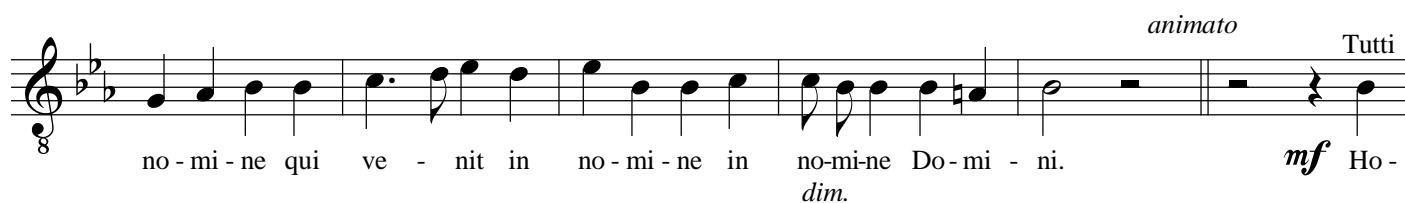
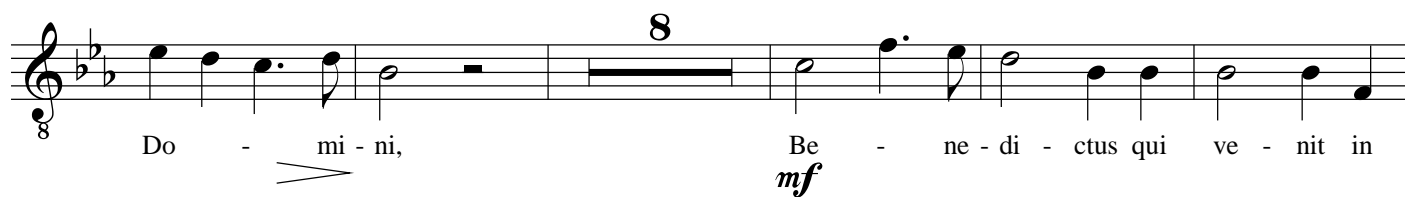
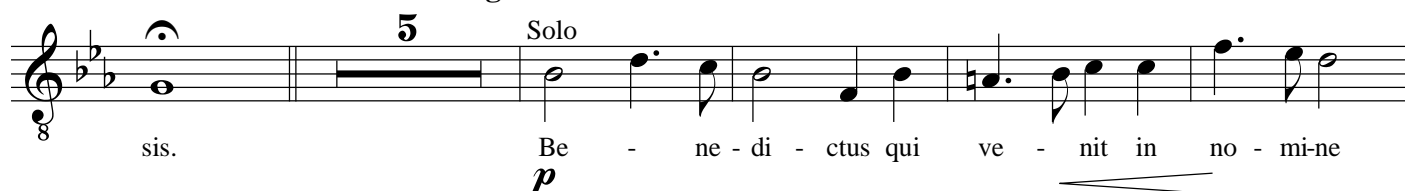
Tenor



Tenor



Andante religioso



Tenor

Larghetto

Agnus Dei

7

mi - se - re - re, mi-se - re - re no -

mf *cresc.* *dim.*

8

- - bis. mi - se - re - re mi-se - re - re no -

mf *cresc.* *dim.*

Piú mosso

2

bis. A - gnus De - i qui

f *mf*

Moderato

tol - lis pec - ca - ta mun - di, do - na no - bis pa -

dim. *p*

cem, do - na no - bis pa - cem, no - bis pa - cem,

mf *cresc.* *dim.*

rit.

do - na no - bis pa - cem, no - bis pa - cem.

p *cresc.* *dim.* *pp* *ppp*