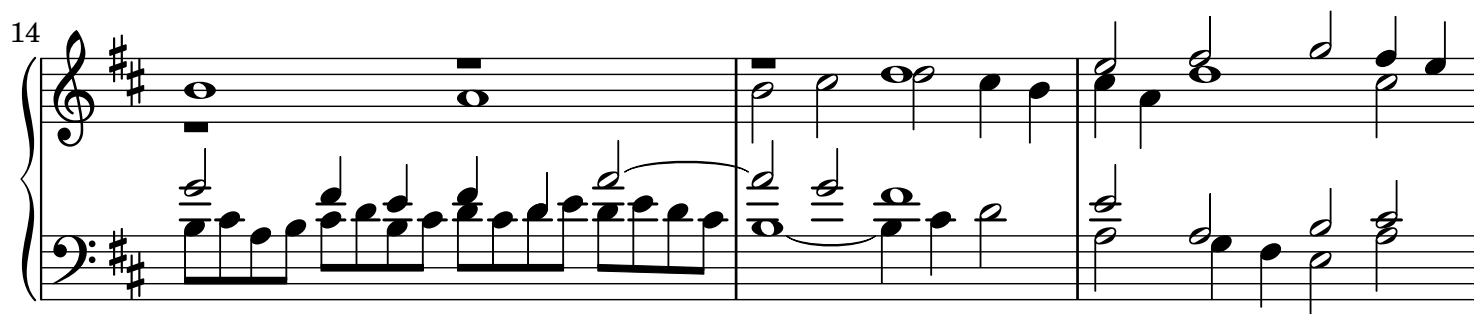
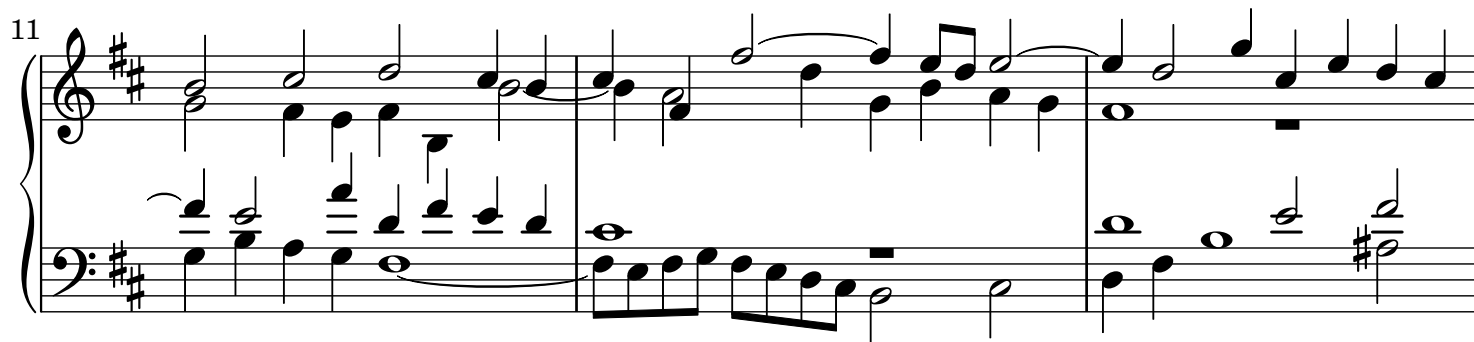
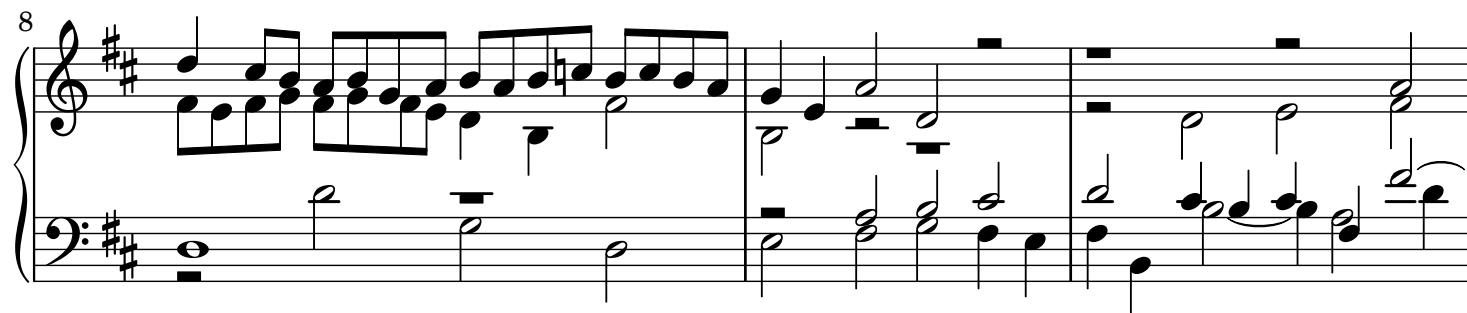
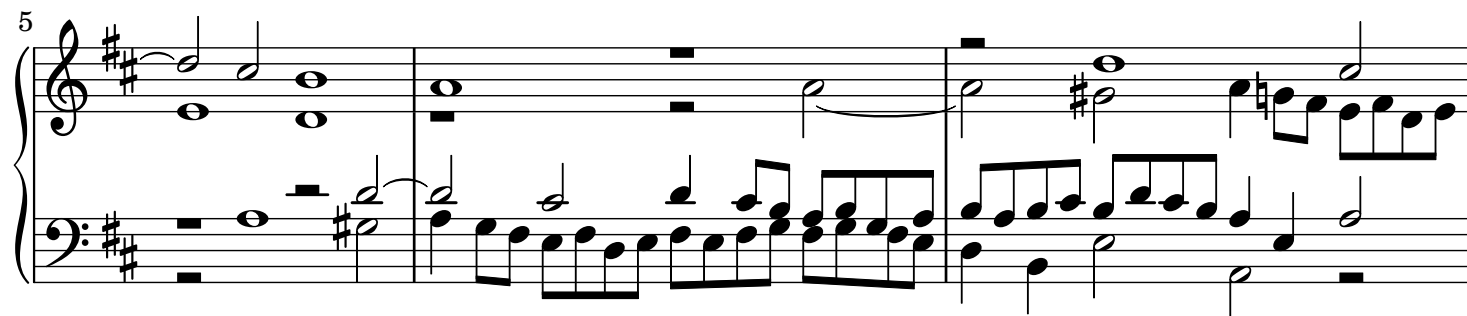
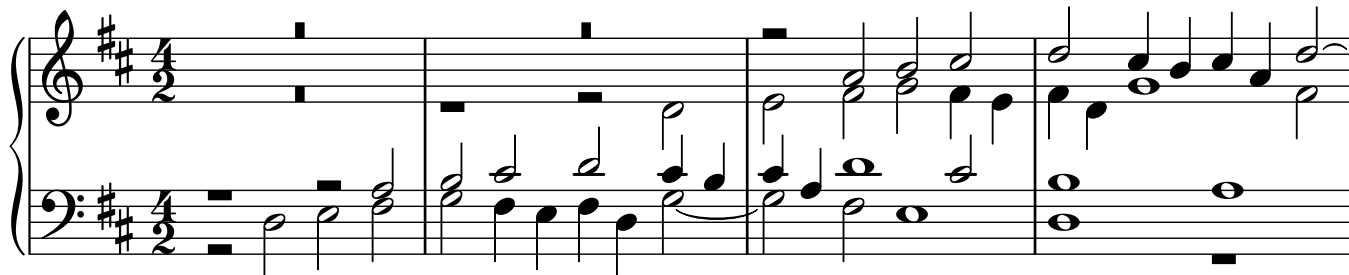


# Dona nobis pacem

J. S. Bach, BWV 232

Piano Transcription by Ruoshi Sun (2021)



17

Measures 17-19 of a musical score in D major (two sharps). The system consists of three measures. Measure 17: Treble clef has a half note D5, a quarter note E5, and a half note F#5; Bass clef has a half note D4, a quarter note E4, and a half note F#4. Measure 18: Treble clef has a half note G5, a quarter note A5, and a half note B5; Bass clef has a half note G4, a quarter note A4, and a half note B4. Measure 19: Treble clef has a half note C6, a quarter note B5, and a half note A5; Bass clef has a half note C5, a quarter note B4, and a half note A4. The bass line features a descending eighth-note scale in measures 18 and 19.

20

Measures 20-22 of a musical score in D major. The system consists of three measures. Measure 20: Treble clef has a half note D5, a quarter note E5, and a half note F#5; Bass clef has a half note D4, a quarter note E4, and a half note F#4. Measure 21: Treble clef has a half note G5, a quarter note A5, and a half note B5; Bass clef has a half note G4, a quarter note A4, and a half note B4. Measure 22: Treble clef has a half note C6, a quarter note B5, and a half note A5; Bass clef has a half note C5, a quarter note B4, and a half note A4. The bass line features a descending eighth-note scale in measures 21 and 22.

23

Measures 23-25 of a musical score in D major. The system consists of three measures. Measure 23: Treble clef has a half note D5, a quarter note E5, and a half note F#5; Bass clef has a half note D4, a quarter note E4, and a half note F#4. Measure 24: Treble clef has a half note G5, a quarter note A5, and a half note B5; Bass clef has a half note G4, a quarter note A4, and a half note B4. Measure 25: Treble clef has a half note C6, a quarter note B5, and a half note A5; Bass clef has a half note C5, a quarter note B4, and a half note A4. The bass line features a descending eighth-note scale in measures 24 and 25.

25

Measures 26-28 of a musical score in D major. The system consists of three measures. Measure 26: Treble clef has a half note D5, a quarter note E5, and a half note F#5; Bass clef has a half note D4, a quarter note E4, and a half note F#4. Measure 27: Treble clef has a half note G5, a quarter note A5, and a half note B5; Bass clef has a half note G4, a quarter note A4, and a half note B4. Measure 28: Treble clef has a half note C6, a quarter note B5, and a half note A5; Bass clef has a half note C5, a quarter note B4, and a half note A4. The bass line features a descending eighth-note scale in measures 27 and 28.

28

Measures 29-31 of a musical score in D major. The system consists of three measures. Measure 29: Treble clef has a half note D5, a quarter note E5, and a half note F#5; Bass clef has a half note D4, a quarter note E4, and a half note F#4. Measure 30: Treble clef has a half note G5, a quarter note A5, and a half note B5; Bass clef has a half note G4, a quarter note A4, and a half note B4. Measure 31: Treble clef has a half note C6, a quarter note B5, and a half note A5; Bass clef has a half note C5, a quarter note B4, and a half note A4. The bass line features a descending eighth-note scale in measures 30 and 31.

31

Measures 31-33 of a musical score in D major (two sharps). The piece is in 3/4 time. Measure 31 features a treble staff with a half note D4, a quarter note E4, and a half note F#4, and a bass staff with a half note D3, a quarter note E3, and a half note F#3. Measure 32 continues with a treble staff of half note D4, quarter note E4, half note F#4, and a bass staff of half note D3, quarter note E3, half note F#3. Measure 33 shows a treble staff with a half note D4, quarter note E4, half note F#4, and a bass staff with a half note D3, quarter note E3, half note F#3. The system concludes with a double bar line.

34

Measures 34-36 of a musical score in D major. Measure 34 has a treble staff with a half note D4, quarter note E4, half note F#4, and a bass staff with a half note D3, quarter note E3, half note F#3. Measure 35 features a treble staff with a half note D4, quarter note E4, half note F#4, and a bass staff with a half note D3, quarter note E3, half note F#3. Measure 36 shows a treble staff with a half note D4, quarter note E4, half note F#4, and a bass staff with a half note D3, quarter note E3, half note F#3. The system ends with a double bar line.

37

Measures 37-39 of a musical score in D major. Measure 37 has a treble staff with a half note D4, quarter note E4, half note F#4, and a bass staff with a half note D3, quarter note E3, half note F#3. Measure 38 features a treble staff with a half note D4, quarter note E4, half note F#4, and a bass staff with a half note D3, quarter note E3, half note F#3. Measure 39 shows a treble staff with a half note D4, quarter note E4, half note F#4, and a bass staff with a half note D3, quarter note E3, half note F#3. The system concludes with a double bar line.

40

Measures 40-42 of a musical score in D major. Measure 40 has a treble staff with a half note D4, quarter note E4, half note F#4, and a bass staff with a half note D3, quarter note E3, half note F#3. Measure 41 features a treble staff with a half note D4, quarter note E4, half note F#4, and a bass staff with a half note D3, quarter note E3, half note F#3. Measure 42 shows a treble staff with a half note D4, quarter note E4, half note F#4, and a bass staff with a half note D3, quarter note E3, half note F#3. The system ends with a double bar line.

43

Measures 43-45 of a musical score in D major. Measure 43 has a treble staff with a half note D4, quarter note E4, half note F#4, and a bass staff with a half note D3, quarter note E3, half note F#3. Measure 44 features a treble staff with a half note D4, quarter note E4, half note F#4, and a bass staff with a half note D3, quarter note E3, half note F#3. Measure 45 shows a treble staff with a half note D4, quarter note E4, half note F#4, and a bass staff with a half note D3, quarter note E3, half note F#3. The system concludes with a double bar line.