

Piano I

Praeludium et Fuga XXII

BWV 891

J. Sebastian Bach
Arr. Peter H. Besseling

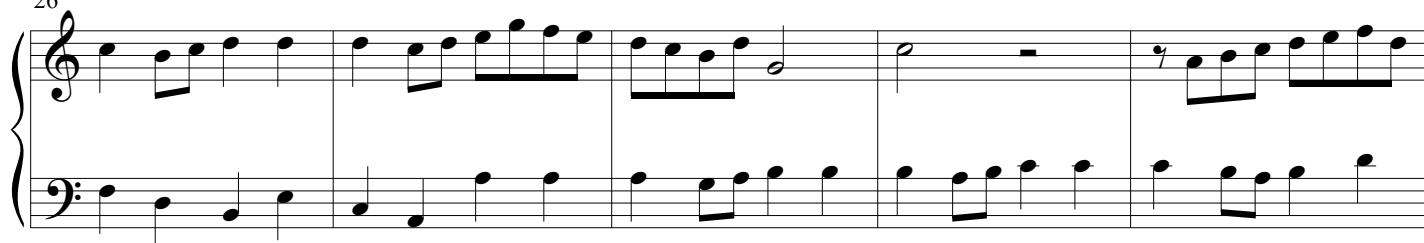
6

11

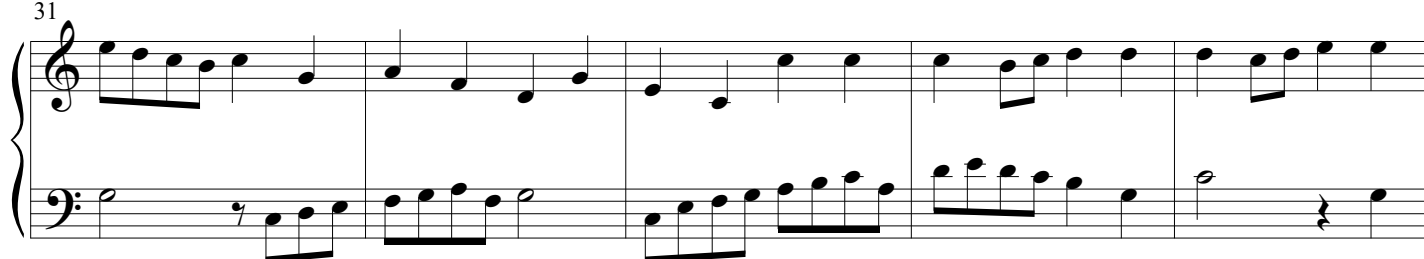
16

21

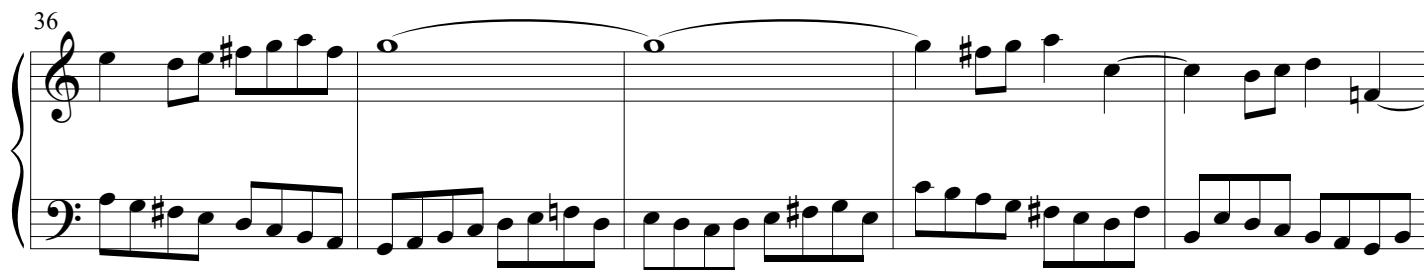
26



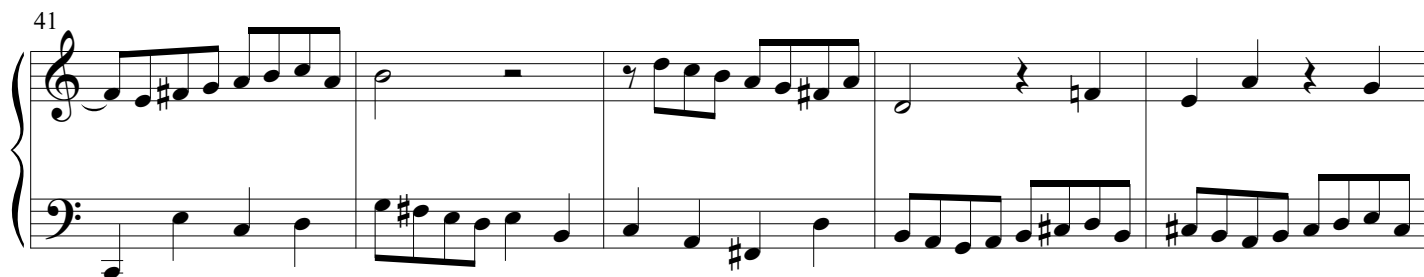
31



36



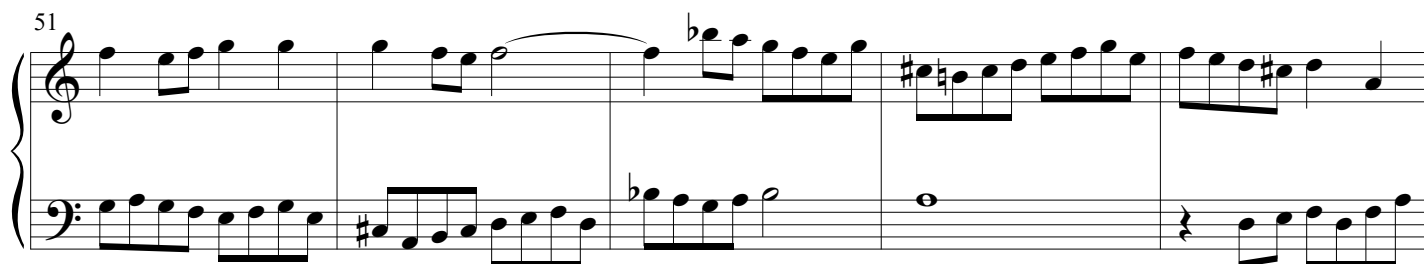
41



46



51



56

System 1 (Measures 56-60): Treble staff begins with a B-flat, followed by a series of eighth and quarter notes. Bass staff features a mix of eighth and quarter notes with some accidentals.

61

System 2 (Measures 61-65): Treble staff continues with eighth and quarter notes, including some beamed sixteenth notes. Bass staff has a steady flow of eighth notes.

66

System 3 (Measures 66-70): Treble staff shows more complex rhythmic patterns with some rests. Bass staff continues with eighth notes and some quarter notes.

71

System 4 (Measures 71-75): Treble staff features a long melodic line with a slur. Bass staff has a more active line with eighth notes.

76

System 5 (Measures 76-79): Treble staff has a melodic phrase with a slur. Bass staff continues with eighth notes and some quarter notes.

80

System 6 (Measures 80-83): Treble staff ends with a half note and a whole note. Bass staff continues with eighth notes and some quarter notes.

Measures 4-7 of the first system. The treble clef staff begins with a whole note chord (F#4, A4, C#5) marked with a '4' above it. The bass clef staff has whole rests. Measures 5-7 contain eighth and sixteenth note patterns in the treble staff, while the bass staff remains at rest.

Measures 8-11 of the second system. The treble staff continues with eighth and sixteenth note patterns. The bass staff has whole rests.

Measures 12-15 of the third system. The treble staff features a mix of eighth, sixteenth, and quarter notes. The bass staff has whole rests.

Measures 16-19 of the fourth system. The treble staff includes a half note and a quarter note. The bass staff has eighth and sixteenth note patterns.

Measures 20-23 of the fifth system. The treble staff features a long melodic line with a slur and a fermata over the first measure. The bass staff has eighth and sixteenth note patterns.

Measures 24-27 of the sixth system. The treble staff continues with a long melodic line, including a slur and a fermata. The bass staff has eighth and sixteenth note patterns.

Praeludium et Fuga XXII - Piano I

5

28

This block contains measures 28, 29, and 30 of the musical score. Measure 28 begins with a treble clef and a key signature of one sharp (F#). The melody in the treble staff consists of quarter notes: G4, A4, B4, C5, B4, A4, G4, F#4, E4, D4, C4. The bass staff has a whole note chord of G3, B2, D3, and a whole note chord of F#3, A3, C4. Measure 29 continues the melody in the treble staff with quarter notes: D4, E4, F#4, G4, A4, B4, C5, B4, A4, G4, F#4, E4, D4, C4. The bass staff has a whole note chord of G3, B2, D3 and a whole note chord of F#3, A3, C4. Measure 30 concludes the piece with a treble staff ending on a whole note chord of G4, A4, B4, C5, B4, A4, G4, F#4, E4, D4, C4. The bass staff has a whole note chord of G3, B2, D3 and a whole note chord of F#3, A3, C4. The score ends with a double bar line.

35



39

39

43

43

46

46

50



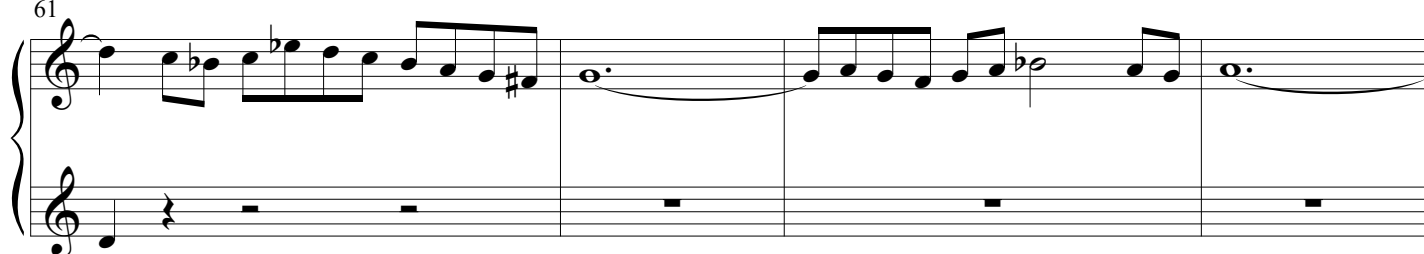
54



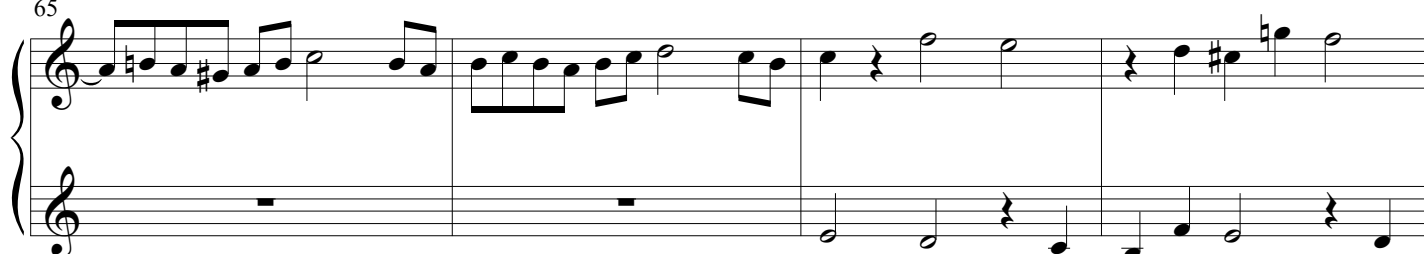
57



61



65



69



72

75

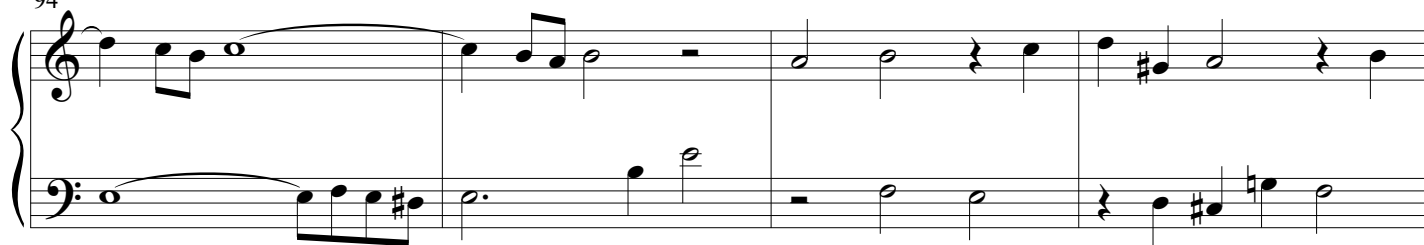
79

83

86

90

94



98

