

PETER AND THE WOLF

SYMPHONIC TALE FOR CHILDREN

SERGE PROKOFIEFF

Op. 67

Andantino. $\text{♩} = 92$

8

[1]

12



[2] Allegro. 8

[3]

7

[4]

And^{no}, come prima.

Flute

Oboe

10

[5]

9

[6]

L'istesso tempo.



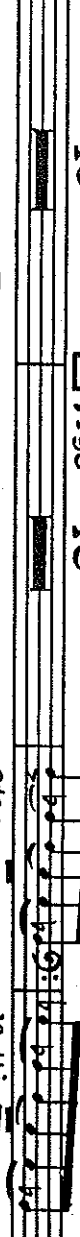
narrator

Oboe

16

[7] $\text{♩} = 96$

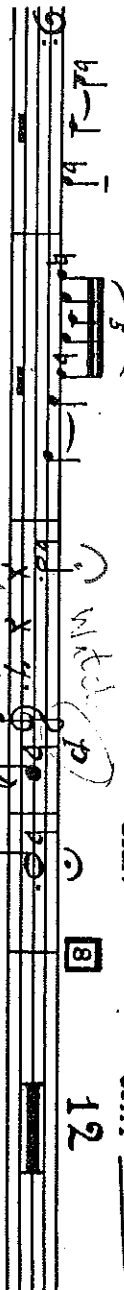
10



clar.

celli

12



accel. 4 al- [9] Più mosso. 8

[10]

5

2



cello

clar.

[11] Moderato. $\text{♩} = 104$.

[12]

9

[13]

Allegro, ma non troppo. $\text{♩} = 152-160$.

ff con sord.

13

[14]

mod^{to}.

11

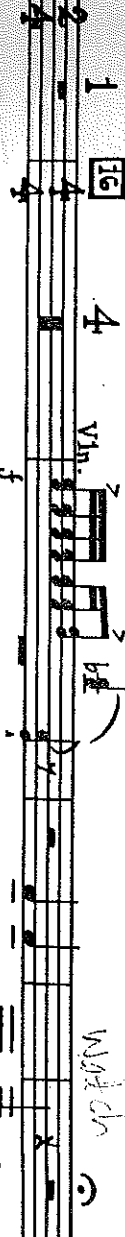
[15] Poco più Andante.



rit-en-u-to

narrator

10



mf

narr.

EDWIN F. KALMUS
PUBLISHER OF MUSIC
NEW YORK, N.Y.

Horn 1 in F

17 And^{te}, come prima 18 Andante. 3 1 4

narrator

19 Andante molto. $\text{♩} = 66$

Violin I

Violin II

Viola

Cello/Double Bass

Str.

f

cresc.

f

poco rit.

allegretto

Musical score for two staves. The first staff is marked *mit.* and *Nervoso. d. 96*. It features a tempo change to *Allegro. 1. 160* at measure 23. The second staff is marked *accl.* and *atempo*. Both staves have a 4/4 time signature. The score includes various musical notations such as notes, rests, and dynamic markings.

6 1 1

22 23 24

2 Andante. 1-76

25 26

27 28

crescendo rattentivo

Meno mosso.

26 9

27 Moderato.

narrator *mf*

f

3

Horn I in F

40 **atempo.**
Bassi *p*

41 *mf* Andante. $\text{♩} = 63$ **42** **43** Moderato. $\text{♩} = 104$.
narrator $\text{♩} = 16$ $\text{♩} = 16$ narrator *p*
And. moder.

mf *ben tenuto, energico*

45 14

46 *f* *cresc.*

47 Poco più mosso. $\text{♩} = 14$

ff

48 Sostenuito. **49** L'istesso tempo.

ff *cresc.*

50 *ff ben tenuto*

51 15 *Poco più mosso.*

52 7 **53** Ande. 3 *acc.* *mp* *ff* *All.º. ♩ = 126*