

Tamás Beischer-Matyó

# **Concerto antico**

for violin, cello and string orchestra

**Violin II**

## Violin II

dedicated to László G. Horváth, Richárd Rózsa  
and the Anima Musicæ Chamber Orchestra

# Concerto antico

for violin, cello and string orchestra

## I

Tamás Beischer-Matyó

**Vivace** ♩ = 138

Vln. I

5

*pp*

*pp*

*pp*

13

25

32

Copyright Tamás Beischer-Matyó, 2020

[http://beischermatyó.hu/concerto\\_antico](http://beischermatyó.hu/concerto_antico)

This work is licensed under the Creative Commons Attribution-NonCommercial-NoDerivatives 4.0 International License.  
To view a copy of this license, visit <https://creativecommons.org/licenses/by-nc-nd/4.0/>

41

Violin II, measures 41-45. The score is in D major (two sharps) and 4/4 time. It features a complex rhythmic pattern with many sixteenth and thirty-second notes. The dynamics are marked *mp* (mezzo-piano) at the end of the system.

46

Violin II, measures 46-50. The score continues with the same complex rhythmic pattern. Dynamics are marked *f* (forte) at the beginning and *ff* (fortissimo) in the middle of the system.

50

Violin II, measures 51-57. The score continues with the same complex rhythmic pattern. Dynamics are marked *f* (forte) at the beginning and *ff* (fortissimo) in the middle of the system.

58

Violin II, measures 58-67. The score continues with the same complex rhythmic pattern. Dynamics are marked *p* (piano) at the end of the system.

68

Violin II, measures 68-77. The score continues with the same complex rhythmic pattern. Dynamics are marked *p* (piano) at the end of the system.

ppp

Violin II, measures 78-82. The score continues with the same complex rhythmic pattern. Dynamics are marked *ppp* (pianissimo) at the end of the system.

**74** *rit.* **Allegro moderato** ♩ = 88

*pp* *f* *p* *mp* *pizz.*

*arco* *f*

**83** *pp* *p*

**91** *mf*

**97** *ff* *sfz*

**Vivo** ♩ = 112

*p* *f* *p* *f*

**106** *rit.* . . . . . *a tempo* ♩ = 112

*mp* *pp* *f* *p*

139

*rall.* . . . . ♩ = 52

**Vivace** ♩ = 138

(o) (o)

*ppp*

gliss.

senza sord.

*p molto ritmico*

senza sord.

*p molto ritmico*

147

*f*

157

*f*

162

*mp*

*mp*

*f*

171

*mp*

*mp*

*f*

180

*mp*

*mp*

*f*

*f*

*mp*

*f*

188

188

195

195

*f*

*f*

*p*

203

203

*f*

*f*

210

210

*ff*

*p*

*ff*

*p*

210

210

*mf*

*p*

*mf*

*p*

220

220

*mp*

*p*

*mp*

*p*

220

220

*mp*

*rit. molto* -----

*pp* *p* *mp* *mf* *f* *ff*

**228** *a tempo* ♩ = 138

*f*

*rall.* ----- ♩ = 88 **234** *a tempo* ♩ = 138

*sfz* *f* 6 6

*rall.* -----

**239** ♩ = 88 *ten.* 2 ♩ = 138 *f* ♩ = 88 *ten.* 6 *f*

*pp*

**244** ♩ = 138 *ff* *ff*

*rall.* ----- ♩ = 88 2 *ff* *ff*



## II

**Con moto** ♩ = 126con sord.  
sul tasto, senza vibr.**10**con sord.  
senza vibr.**19****27****37**

sul tasto (senza vibr.)

**43**

47

solo **Un poco agitato** ♩ = 138

*ppp*

senza sord.  
col legno

*pp*

56

**un poco tratt.** ♩ = 112  
(senza sord.)

*mf* *pp*

ord.

*p*

**a tempo** ♩ = 138

61

*ppp*

col legno

*pp* *mp*

68

**rall.** ----- **un poco tratt.** ♩ = 112  
sul tasto (senza vibr.)**rit.**

*ppp*

ord.

*p* *ppp*

col legno

*pp*

ord.

*p* *ppp*

col legno

*pp*

solo  $\text{♩} = 112$  *rit.*  $\text{♩} = 112$  *rit.*

[77] *solo* **Con moto**  $\text{♩} = 126$  *rall.* . . . . *un poco tratt.*  $\text{♩} = 112$

*pp* *mp* *ppp*

ord. *ppp* *mp* *ppp*

3

[89] *con sord.* **rall. molto** . . . . . **Un poco agitato**  $\text{♩} = 138$

*p* *ppp* *S. vln.* *tr.* *p* *mf*

6

*con sord.* *p* *ppp*

6

senza sord. 100 *rall. molto* - - - - - *al* ♩ = 84

*pp* *mp*

104 *un poco tratt.* ♩ = 112  
col legno

*mp*  
col legno  
*mp*

110

114 *rit.* *a tempo*  
ord. *p cantabile*  
ord. *p cantabile*

*ff* *ff*

120 *rit.*

*mf*

123 *Appassionato* ♩ = 168

*ff*

131

140

*tratt.* ♩ = 152      *rit.*      *a tempo* ♩ = 168

144

148

152

156

160

168

*rall.*      *al* ♩ = 84      *Con moto* ♩ = 126

D. b.  
col legno

177

183

*p*

*p*

rit. . . . .

*ppp*

191

**a tempo**  
(spicc.)

rit. . . . .

*pp*

197

**a tempo**

rall. . . . .

202

**Lento molto** ♩ = 48  
S. vc. Vln. I

con sord.

*pppp*

*pp*

*ppp*

con sord.

rit. . . a tempo ♩ = 48

rit.

*ppp*

*ppp*

*ppp*

**211**  $\text{♩} = 112$  *poco accel.* ..... **215** *Un poco agitato*  $\text{♩} = 138$  *rall.* .....

**221** *(rall.)* .....  $\text{♩} = 112$  *(con sord.)* ..... *rall.* .....  $\text{♩} = 96$

solo

**229** *rall.* .....  $\text{♩} = 76$  ..... *rall.* .....

## III

Allegretto  $\text{♩} = 88$ 

8

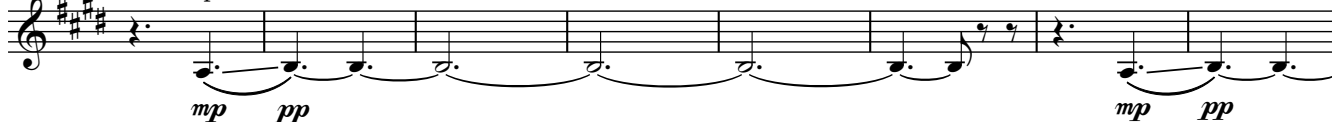
sul pont. - - &gt; ord.



16

sul pont. - - - &gt; ord.

sul pont. - - &gt; ord.



24

sul pont. - - &gt; ord.



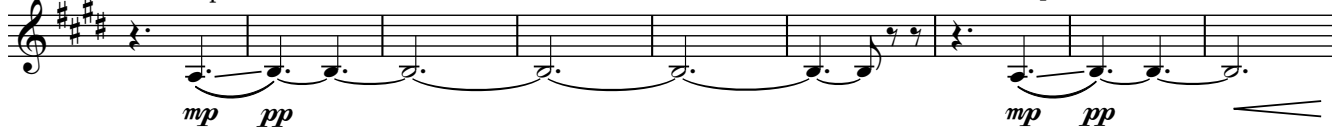
sul pont. - - &gt; ord.



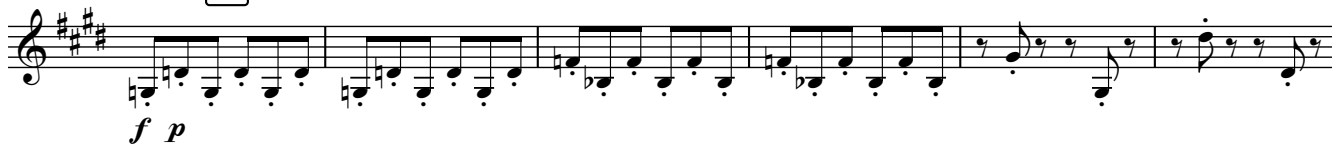
33

sul pont. - - &gt; ord.

sul pont. - - &gt; ord.



42



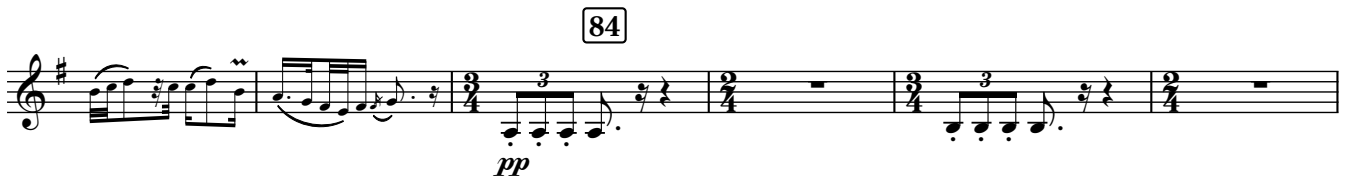
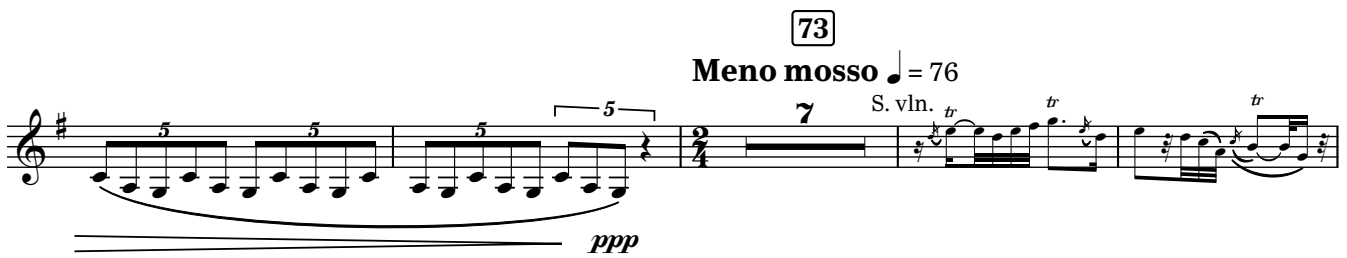
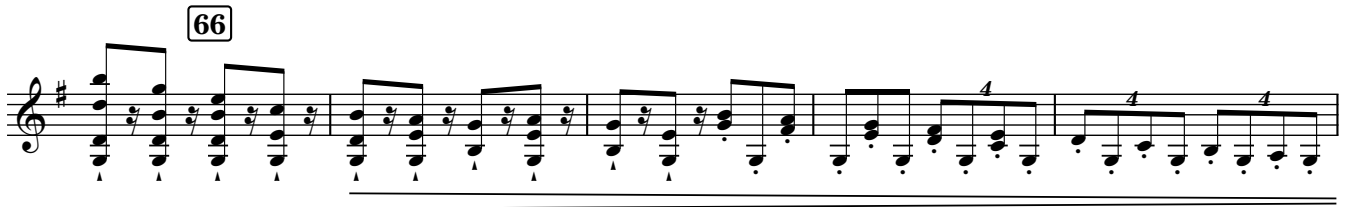
52



57









110

**Allegretto** ♩ = 88

115



123

arco, sul pont.  
trem.

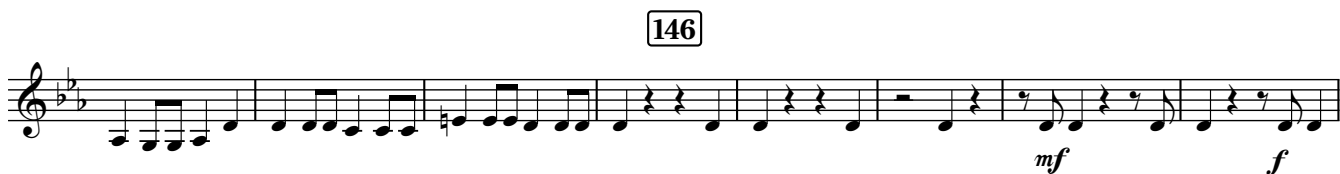
133

**Allegro vivace** ♩ = 152

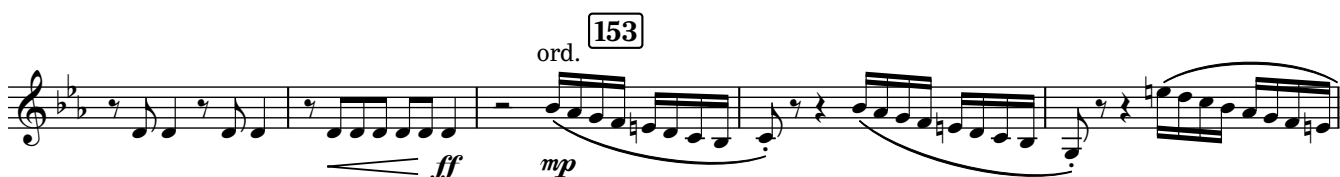
138

ord.  
p

142



146



153

ord.  
mp

159



167



173



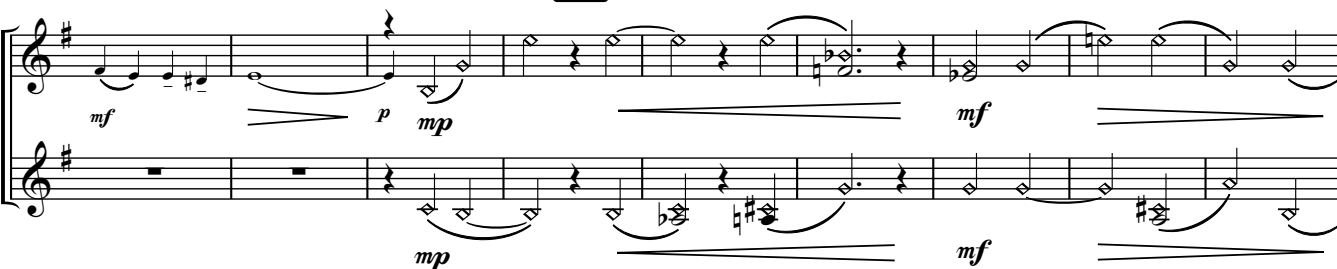
182



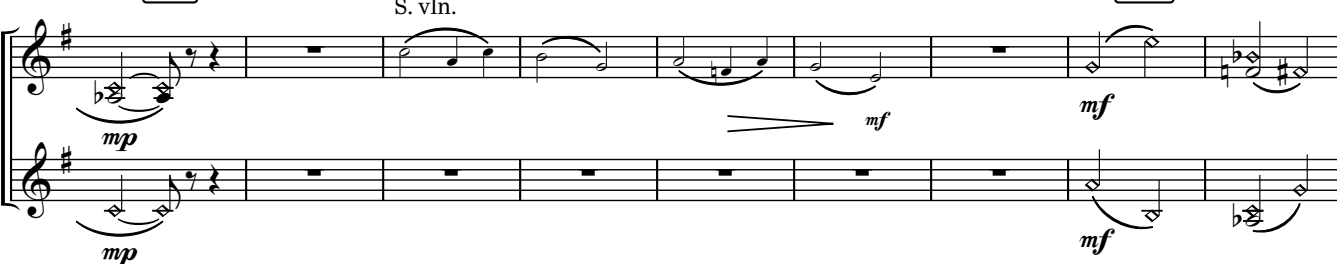
188



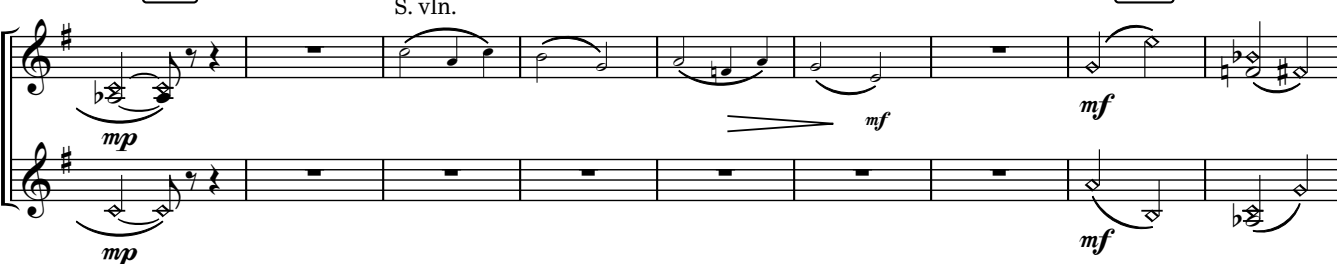
193



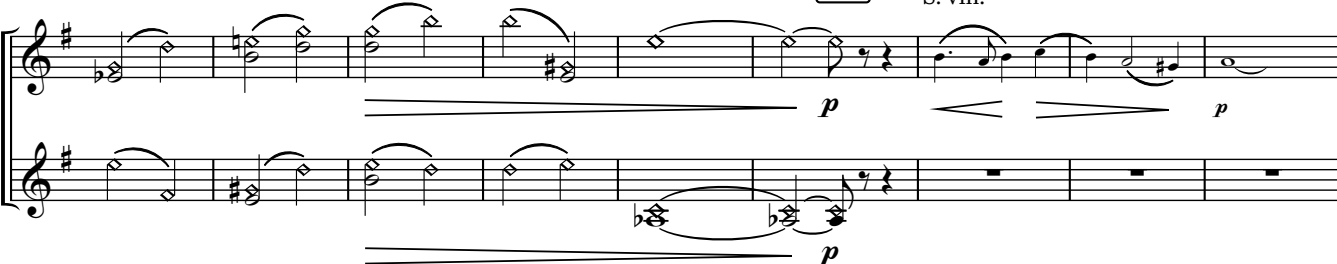
199



206



213



217 Vln. I

*pp* *p* *mp* *ff* *mp*

221

225 *ff*

233

240 *mf* *f*

pizz. 246 250

*p*

