

Flute 2

Concerto stilizzato

paraphrase on a motif by Brahms

PARTE PRIMA: “CADENZA”

Tamás Beischer-Matyó

Adagio ♩ = 60

Cadenza

22

25

tr

ppp crescendo ff

30

poco rall. Poco sostenuto

ff ff

6/4

PARTE SECONDA: “FORMA-SONATA”

Allegro con brio ♩ = 180 (♩. = 60)

Allegro con brio ♩ = 180 (♩. = 60)

35 40 44

ff *ff* *ff* *ff* *pp*

tr

3

C. a., Bsn. 1

45 50 54

p *p* *p* *p* *p*

tr

3

D. bsn., S. pno., D. b.

55 60 64

mf *mf* *mf* *f* *f*

tr

3

Copyright Tamás Beischer-Matyó, 1996

www.beischermatyo.hu/concerto_stilizzato

This work is licensed under the Creative Commons Attribution-NonCommercial-NoDerivatives 4.0 International License. To view a copy of this license, visit www.creativecommons.org/licenses/by-nc-nd/4.0/

Musical score for Flute 2, measures 55 to 95. The score includes various musical notations such as treble clef, key signature (one flat), time signature (4/4), dynamics (*f*, *ff*, *poco ritard.*, *Sostenuto*, *allarg.*, *ff grandioso*), articulation (accents, slurs), and performance instructions (*flutt.*, *ord.*, *Picc., Cl. 1*). Measure numbers 55, 60, 70, 75, 80, 85, 90, and 95 are boxed. The score ends with a 6/4 time signature change.

a tempo $\text{♩} = 60$ ($\text{♩} = 180$)

100 S. pno. Hp.

105 poco ritard. a tempo

mf *pp* *ff*

poco ritard. a tempo

110 *f* *espressivo*

115 *tr* 5 2 125

130 8 Picc., Vln. *f* *espress.* *fff*

molto rall. a tempo

pp *ff* 135 8

Ob. 1., C. a., Cl., B. cl., Bsn., D. bsn. *f* 145 *f*

rall. Meno allegro $\text{♩} = 120$

10 Fl. 1

(senza rall.) accel. . . . al $\text{♩} = 180$ (a tempo)

160 *p* 165 Ob. 1., Vla. *mp*

170 *mf* *f* *ff*

175

180

PARTE TERZA: "LIED"

185 subito Adagio molto $\text{♩} = 60$ ($\text{♩} = \text{♩}$) allargando 205

a tempo 210

molto rall. più adagio e molto flessibile $\text{♩} = 48$ poco a poco allarg. . . . 220

PARTE QUARTA: "RONDÒ"

. . . a tempo ($\text{♩} = 48$) rall. Allegro vivace $\text{♩} = 180$ ($\text{♩} = 90$) 225

B. cl. *p marcato*

230 2 3 *ff ff ff f* *tr*

235 *(tr)* *poco rall. - - a tempo* 6

rall. *a tempo* *S. pno.* 8 245 *f* *flutt.* *p* *f* 2

250 *(flutt.)* *ord.* *p* *f* *p* *ff* 255 2

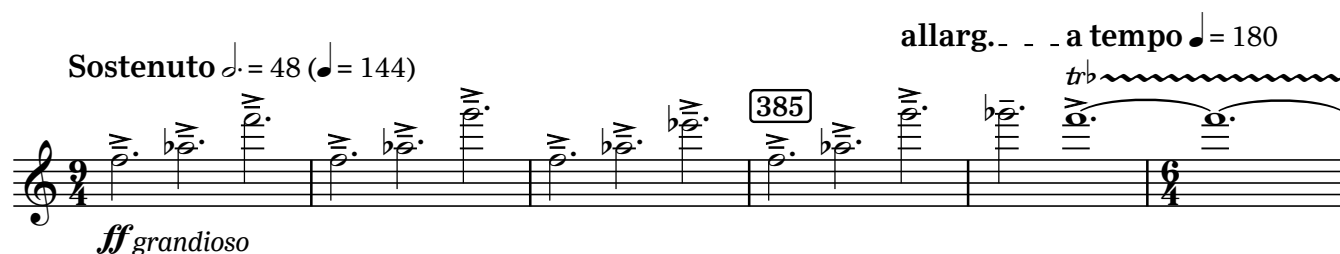
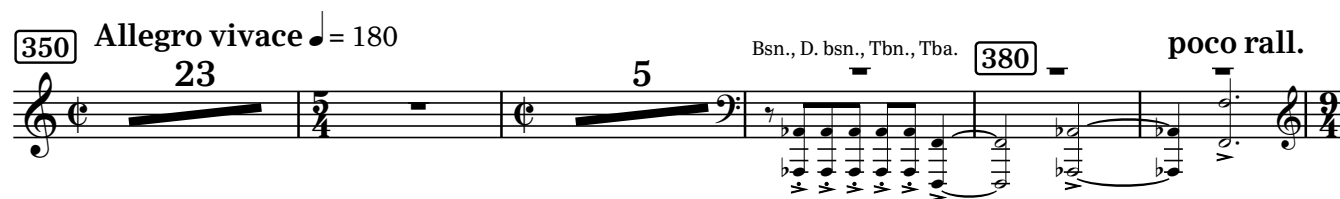
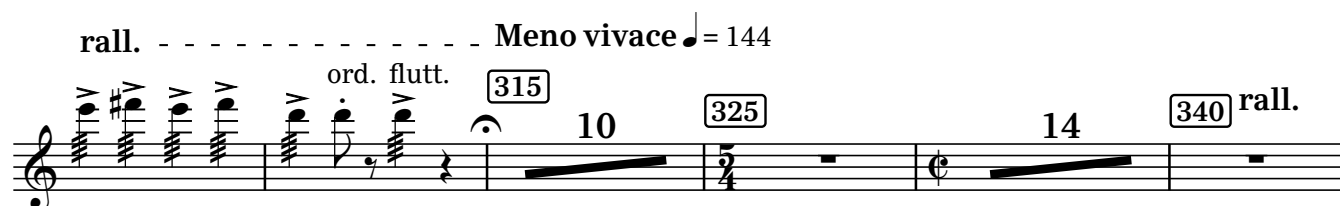
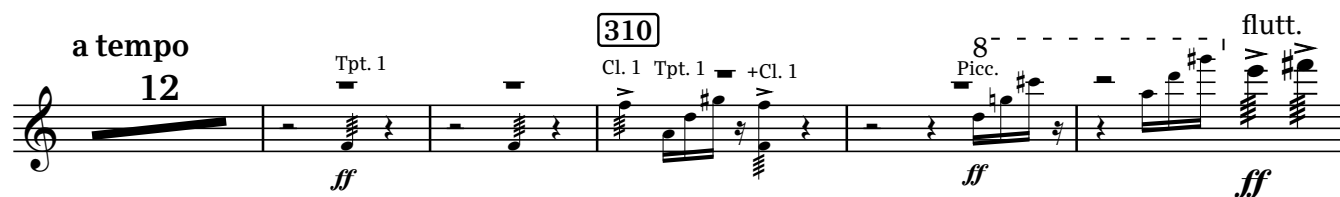
Brasses *ff*

260 4 265 *8* *Picc.* *f*

270 *S. pno.* *mf*

trem. 275 5 *p*

Detailed description: This page contains the musical score for Flute 2, measures 230 through 275. The score is written in treble clef with a key signature of one flat (B-flat). Measure 230 begins with a 2-measure rest, followed by a 3-measure rest, and then a series of notes with dynamics *ff ff ff* and *f*. A trill is marked above the final note. Measure 235 features a trill marked *(tr)* and a tempo change from *poco rall.* to *a tempo*. Measures 245-255 include complex rhythmic patterns with dynamics *f*, *p*, and *ff*, and a flutted section marked *flutt.*. Measures 260-265 show a 4-measure rest followed by a 5-measure rest, with dynamics *pp* and *f*. Measures 270-275 include a 5-measure rest and a tremolo section marked *trem.* and *p*. The score also includes parts for Brasses and S. pno. (Soprano Piano).



PARTE QUINTA: "CONCLUSIONE"



