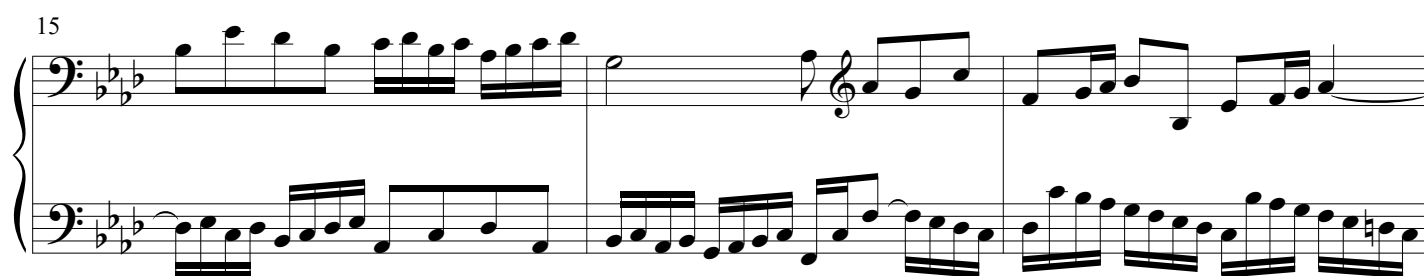
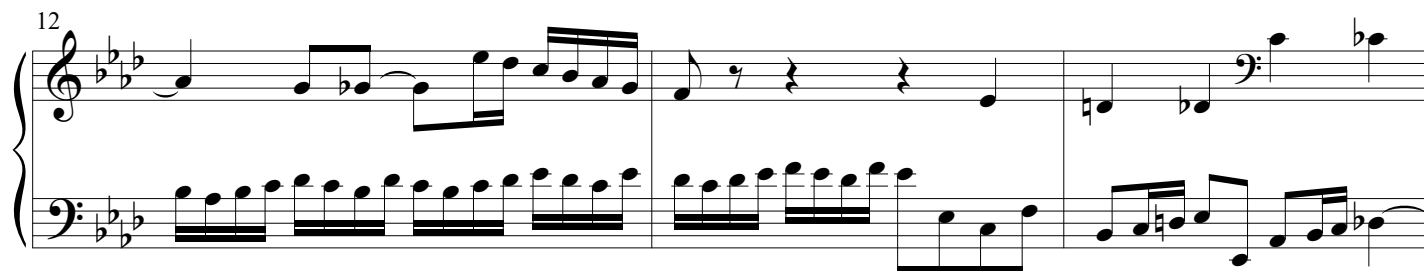
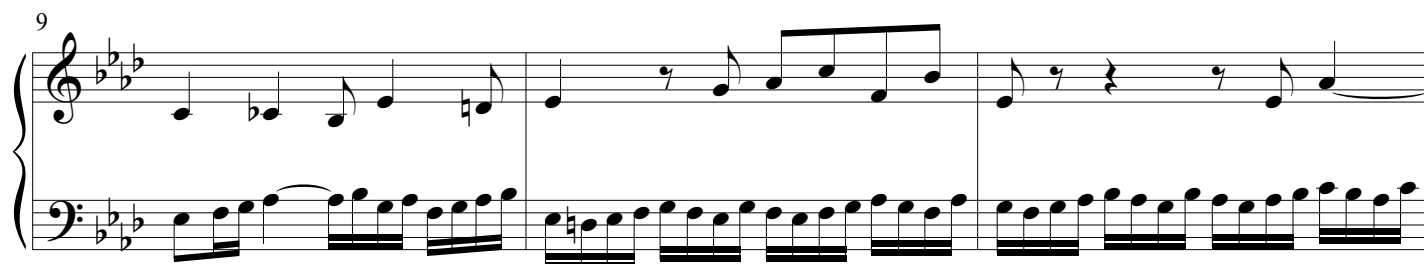
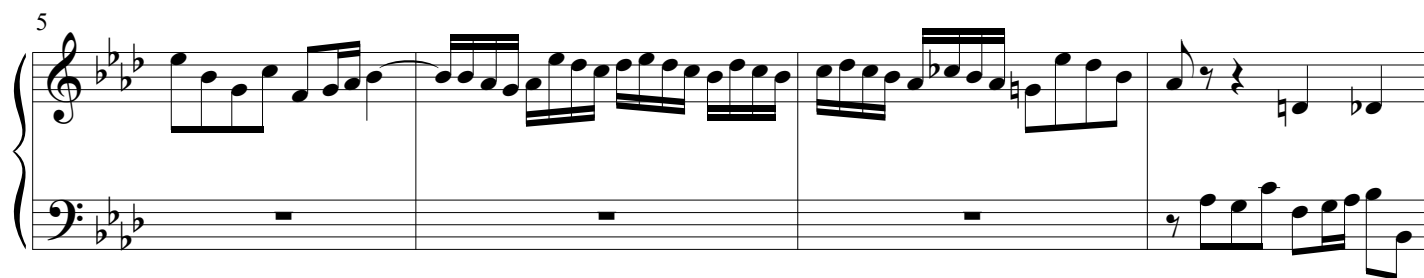
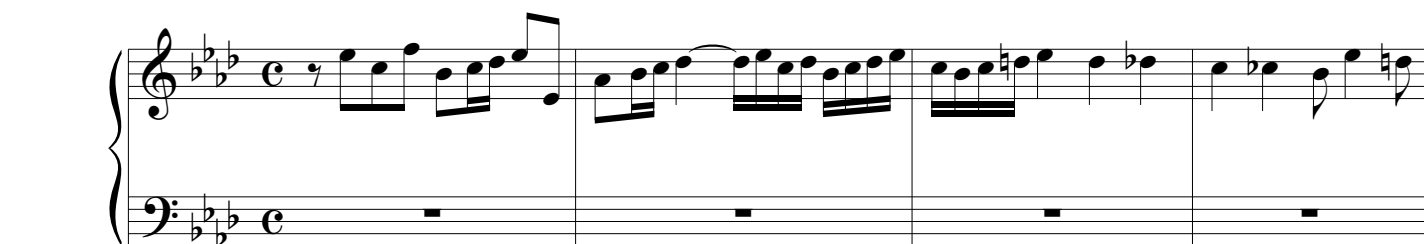


# Fuga XVII

BWV 886

J. Sebastian Bach  
Arr. Peter H. Besseling



18

Measures 18-20 of the piece. Measure 18 features a treble clef with a series of eighth notes and a bass clef with a series of eighth notes. Measure 19 continues the eighth-note patterns in both hands. Measure 20 shows a change in the treble clef pattern, with a half note and a quarter note, while the bass clef continues with eighth notes.

21

Measures 21-23 of the piece. Measure 21 has a treble clef with a half note and a quarter note, and a bass clef with a half note and a quarter note. Measure 22 shows a treble clef with a half note and a quarter note, and a bass clef with a half note and a quarter note. Measure 23 features a treble clef with a half note and a quarter note, and a bass clef with a half note and a quarter note.

24

Measures 24-26 of the piece. Measure 24 has a treble clef with a half note and a quarter note, and a bass clef with a half note and a quarter note. Measure 25 shows a treble clef with a half note and a quarter note, and a bass clef with a half note and a quarter note. Measure 26 features a treble clef with a half note and a quarter note, and a bass clef with a half note and a quarter note.

27

Measures 27-29 of the piece. Measure 27 has a treble clef with a half note and a quarter note, and a bass clef with a half note and a quarter note. Measure 28 shows a treble clef with a half note and a quarter note, and a bass clef with a half note and a quarter note. Measure 29 features a treble clef with a half note and a quarter note, and a bass clef with a half note and a quarter note.

30

Measures 30-32 of the piece. Measure 30 has a treble clef with a half note and a quarter note, and a bass clef with a half note and a quarter note. Measure 31 shows a treble clef with a half note and a quarter note, and a bass clef with a half note and a quarter note. Measure 32 features a treble clef with a half note and a quarter note, and a bass clef with a half note and a quarter note.

33

Measures 33-35 of the piece. Measure 33 has a treble clef with a half note and a quarter note, and a bass clef with a half note and a quarter note. Measure 34 shows a treble clef with a half note and a quarter note, and a bass clef with a half note and a quarter note. Measure 35 features a treble clef with a half note and a quarter note, and a bass clef with a half note and a quarter note.

36

Measures 36-38 of the musical score. Measure 36: Treble clef has a half note G4, a half note F4, and a quarter note E4. Bass clef has a whole rest. Measure 37: Treble clef has a half note D4, a half note C4, and a quarter note B3. Bass clef has a quarter note G3, a quarter note F3, and a quarter note E3. Measure 38: Treble clef has a half note D4, a half note C4, and a quarter note B3. Bass clef has a quarter note G3, a quarter note F3, and a quarter note E3.

39

Measures 39-41 of the musical score. Measure 39: Treble clef has a half note G4, a half note F4, and a quarter note E4. Bass clef has a quarter note G3, a quarter note F3, and a quarter note E3. Measure 40: Treble clef has a half note D4, a half note C4, and a quarter note B3. Bass clef has a quarter note G3, a quarter note F3, and a quarter note E3. Measure 41: Treble clef has a half note D4, a half note C4, and a quarter note B3. Bass clef has a quarter note G3, a quarter note F3, and a quarter note E3.

42

Measures 42-44 of the musical score. Measure 42: Treble clef has a half note G4, a half note F4, and a quarter note E4. Bass clef has a quarter note G3, a quarter note F3, and a quarter note E3. Measure 43: Treble clef has a half note D4, a half note C4, and a quarter note B3. Bass clef has a quarter note G3, a quarter note F3, and a quarter note E3. Measure 44: Treble clef has a half note D4, a half note C4, and a quarter note B3. Bass clef has a quarter note G3, a quarter note F3, and a quarter note E3.

45

Measures 45-47 of the musical score. Measure 45: Treble clef has a half note G4, a half note F4, and a quarter note E4. Bass clef has a quarter note G3, a quarter note F3, and a quarter note E3. Measure 46: Treble clef has a half note D4, a half note C4, and a quarter note B3. Bass clef has a quarter note G3, a quarter note F3, and a quarter note E3. Measure 47: Treble clef has a half note D4, a half note C4, and a quarter note B3. Bass clef has a quarter note G3, a quarter note F3, and a quarter note E3.

48

Measures 48-50 of the musical score. Measure 48: Treble clef has a half note G4, a half note F4, and a quarter note E4. Bass clef has a quarter note G3, a quarter note F3, and a quarter note E3. Measure 49: Treble clef has a half note D4, a half note C4, and a quarter note B3. Bass clef has a quarter note G3, a quarter note F3, and a quarter note E3. Measure 50: Treble clef has a half note D4, a half note C4, and a quarter note B3. Bass clef has a quarter note G3, a quarter note F3, and a quarter note E3.