

**Praeludium et Fuga XVII**

BWV 886

J. SEBASTIAN BACH

PETER H. BESSELING

4

8

11

14

17

21

24

27

30

33

37

40

43

46

49

52

55

Measures 55-58 of the Praeludium et Fuga XVII. The music is in G major (one sharp) and 4/4 time. The right hand features a melodic line with eighth and sixteenth notes, while the left hand provides a rhythmic accompaniment with eighth and sixteenth notes. Measure 58 ends with a double bar line.

59

Measures 59-61 of the Praeludium et Fuga XVII. The right hand continues the melodic line with eighth and sixteenth notes. The left hand features a more active accompaniment with eighth and sixteenth notes. Measure 61 ends with a double bar line.

62

Measures 62-64 of the Praeludium et Fuga XVII. The right hand features a melodic line with eighth and sixteenth notes. The left hand provides a rhythmic accompaniment with eighth and sixteenth notes. Measure 64 ends with a double bar line.

65

Measures 65-67 of the Praeludium et Fuga XVII. The right hand features a melodic line with eighth and sixteenth notes. The left hand provides a rhythmic accompaniment with eighth and sixteenth notes. Measure 67 ends with a double bar line.

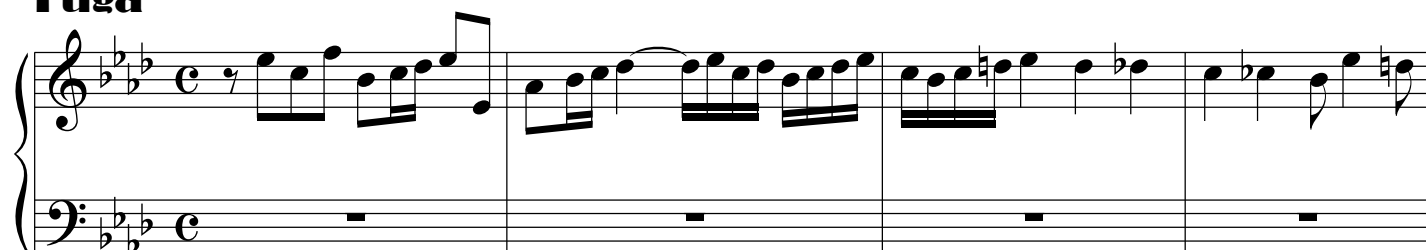
68

Measures 68-70 of the Praeludium et Fuga XVII. The right hand features a melodic line with eighth and sixteenth notes. The left hand provides a rhythmic accompaniment with eighth and sixteenth notes. Measure 70 ends with a double bar line.

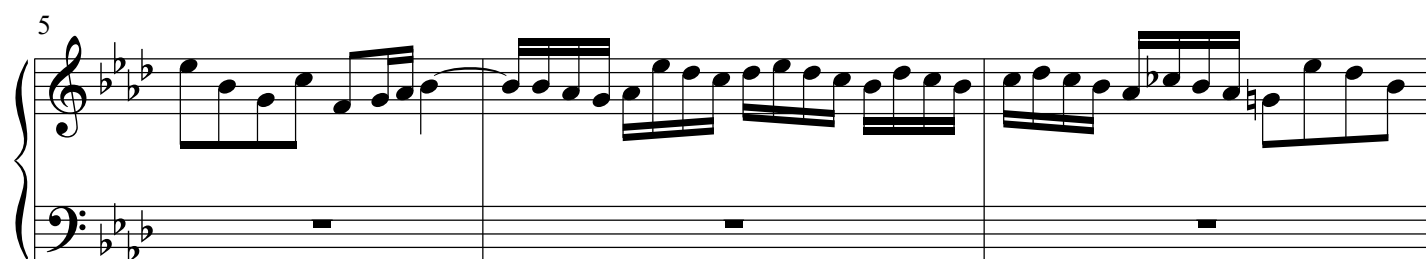
71

Measures 71-73 of the Praeludium et Fuga XVII. The right hand features a melodic line with eighth and sixteenth notes. The left hand provides a rhythmic accompaniment with eighth and sixteenth notes. Measure 73 ends with a double bar line.

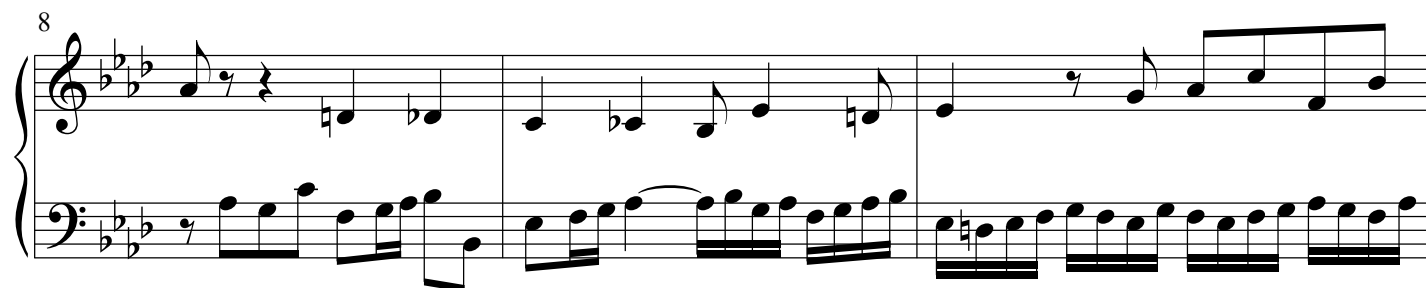
74

**Fuga**

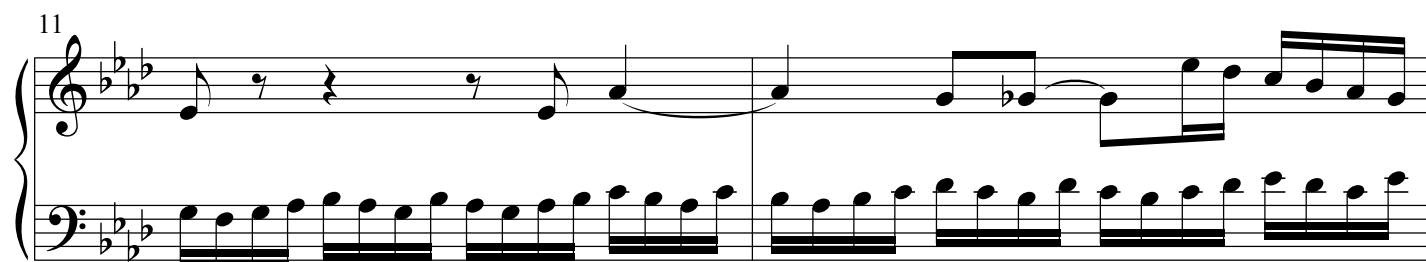
5



8



11



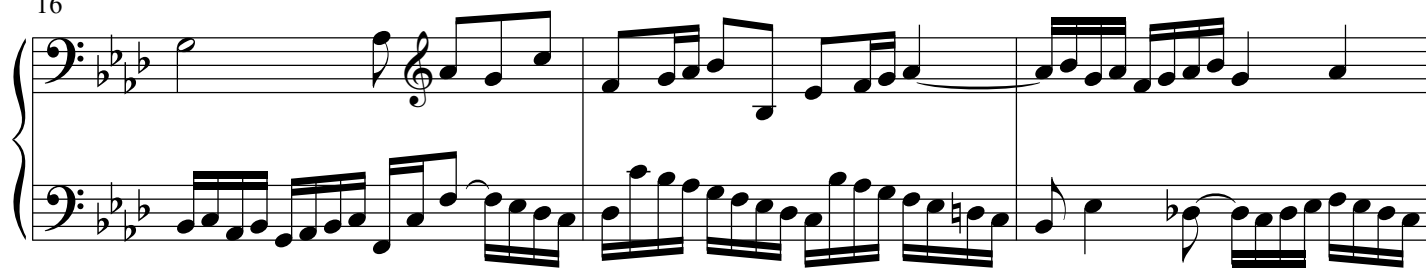
13



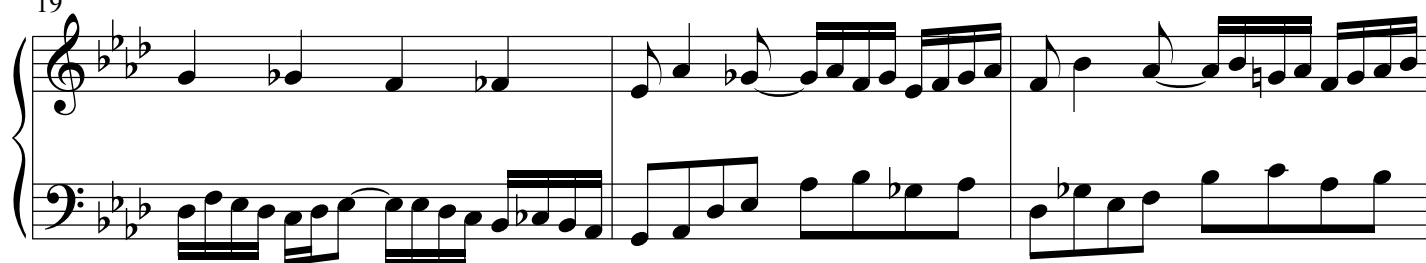
6

**Praeludium et Fuga XVII - PIANO II**

16



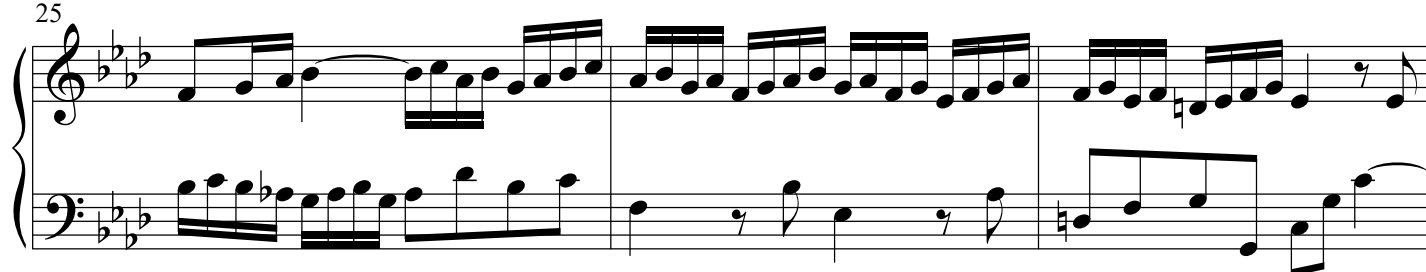
19



22



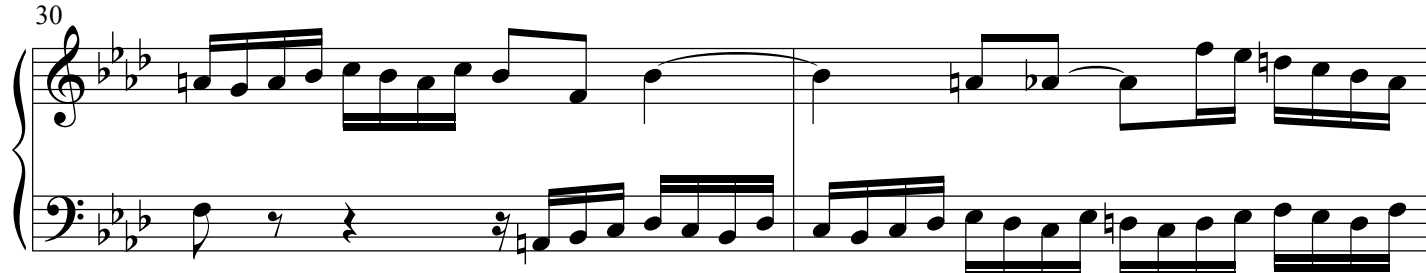
25



28



30



32

Measures 32-34. Treble clef: continuous eighth-note pattern in B-flat major. Bass clef: whole rests.

35

Measures 35-37. Treble clef: melodic line with eighth notes and a half note. Bass clef: whole rests in measures 35-36, then an eighth-note pattern in measure 37.

38

Measures 38-40. Treble clef: continuous eighth-note pattern. Bass clef: melodic line with eighth notes and a half note.

40

Measures 41-43. Treble clef: continuous eighth-note pattern. Bass clef: melodic line with eighth notes and a half note.

43

Measures 44-46. Treble clef: continuous eighth-note pattern. Bass clef: melodic line with eighth notes and a half note.

46

Measures 47-49. Treble clef: melodic line with eighth notes and a half note. Bass clef: continuous eighth-note pattern.

