

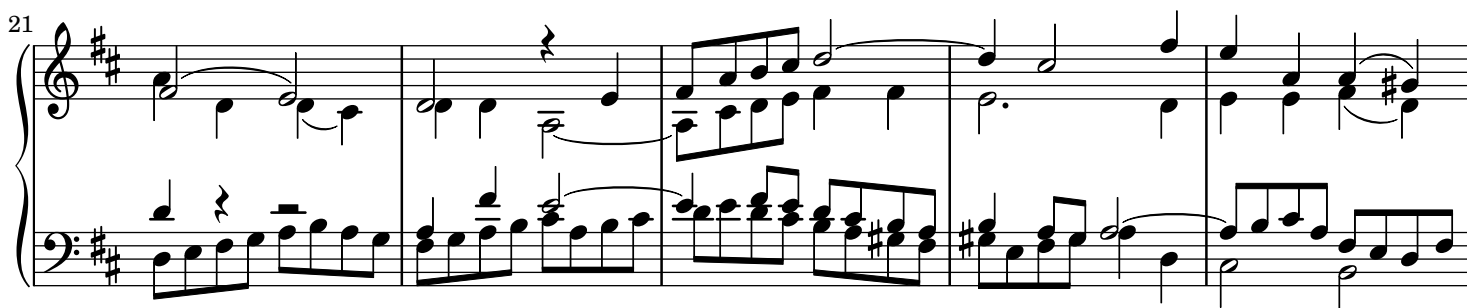
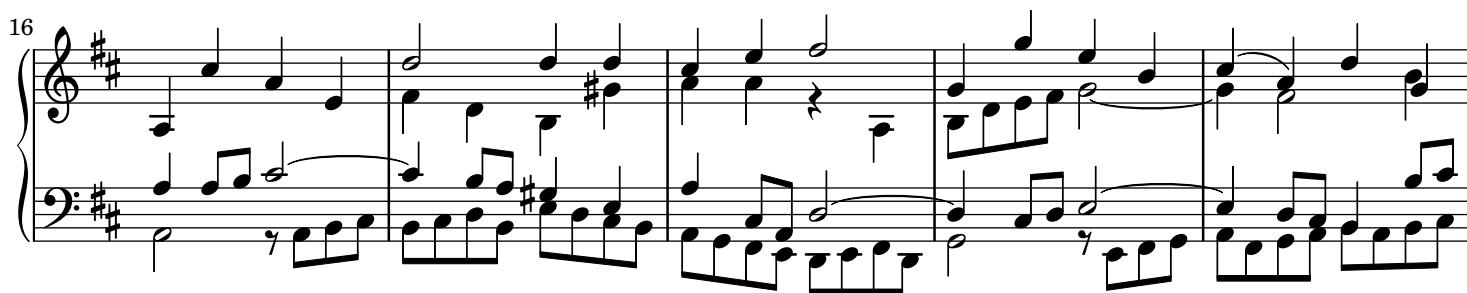
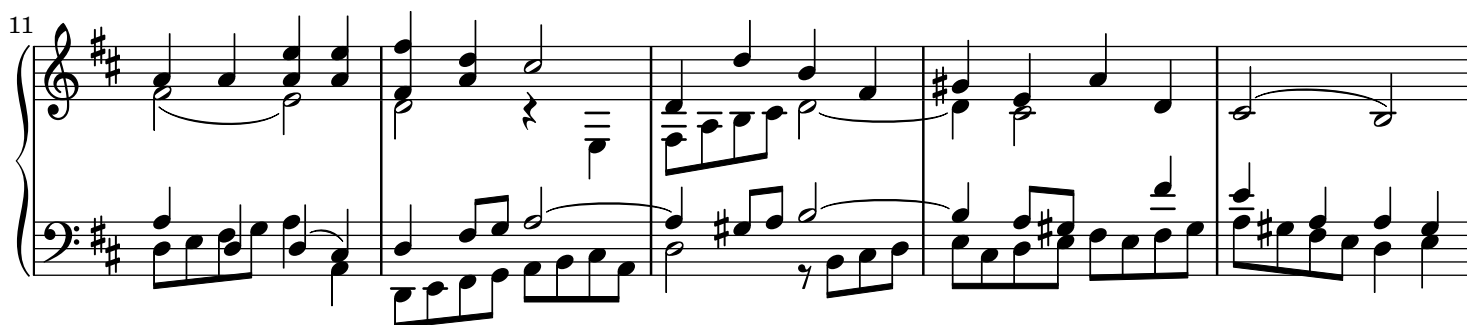
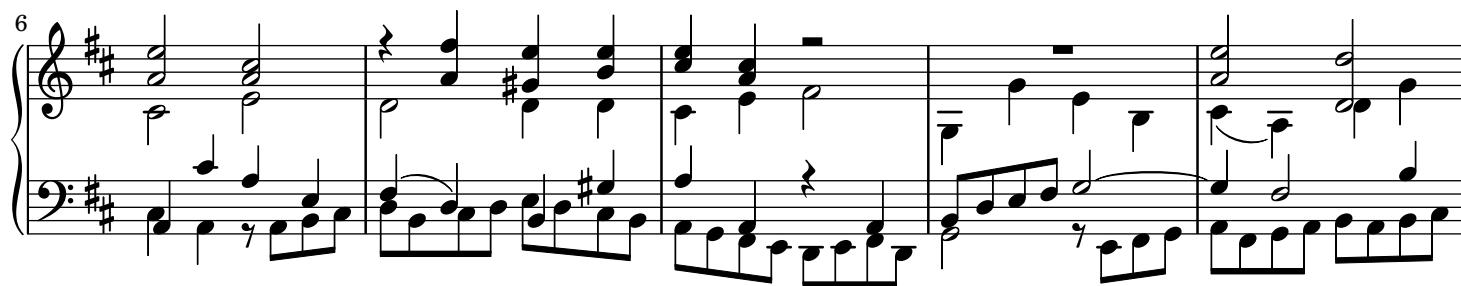
# Mass in B minor, BWV 232

## Piano Transcription

Johann Sebastian Bach (1749)

Arr. Ruoshi Sun (2021)

### 13. Patrem omnipotentem



26

System 1 (measures 26-30) of a piano piece in D major. The right hand features a melodic line with eighth and sixteenth notes, often beamed together, and some longer notes. The left hand provides a steady accompaniment with eighth and sixteenth notes, including some triplets. The key signature has two sharps (F# and C#).

31

System 2 (measures 31-34). The right hand continues the melodic development with various note values and rests. The left hand maintains a rhythmic accompaniment with eighth and sixteenth notes. The key signature remains D major.

35

System 3 (measures 35-39). The right hand has a more active melodic line with many sixteenth notes. The left hand accompaniment consists of eighth and sixteenth notes. The key signature is D major.

40

System 4 (measures 40-44). The right hand features a melodic line with some rests and eighth notes. The left hand accompaniment includes eighth and sixteenth notes. The key signature is D major.

45

System 5 (measures 45-49). The right hand has a melodic line with eighth and sixteenth notes. The left hand accompaniment consists of eighth and sixteenth notes. The key signature is D major.

50

System 6 (measures 50-54). The right hand features a melodic line with eighth and sixteenth notes. The left hand accompaniment consists of eighth and sixteenth notes. The key signature is D major.

55

Measures 55-59 of a piano piece in D major. The right hand features a melodic line with eighth and sixteenth notes, while the left hand provides a steady accompaniment of eighth notes. Measure 59 ends with a fermata over a whole note chord.

60

Measures 60-64. The right hand continues the melodic development with various rhythmic patterns, including eighth and sixteenth notes. The left hand maintains a consistent eighth-note accompaniment. Measure 64 concludes with a fermata.

65

Measures 65-69. This section includes a key signature change to D minor in measure 67, indicated by a natural sign over the F# in the right hand. The right hand has a more active melodic line, while the left hand continues with eighth notes. Measure 69 ends with a fermata.

70

Measures 70-74. The right hand features a melodic line with some rests, while the left hand continues the eighth-note accompaniment. Measure 74 ends with a fermata.

75

Measures 75-79. The right hand has a melodic line with eighth notes, and the left hand continues with eighth notes. Measure 79 ends with a fermata.

80

Measures 80-84. The right hand features a melodic line with eighth notes, and the left hand continues with eighth notes. Measure 84 ends with a double bar line and repeat signs on both staves.