

Piano I

# fuga

BWV 853

J. Sebastian Bach  
Arr. Peter H. Besseling

Measures 1-6 of the Fugue BWV 853. The piece is in C minor, 3/4 time. Measures 1 and 2 feature a whole note chord in both hands, marked with a '2' above the staff. Measures 3-6 show the first subject entering in the right hand, while the left hand has whole notes.

Measures 7-10 of the Fugue BWV 853. The first subject continues in the right hand, and the second subject enters in the left hand in measure 7. The texture is a two-part setting.

Measures 11-14 of the Fugue BWV 853. The first subject returns in the right hand, and the left hand continues with the second subject. The piece maintains its two-part texture.

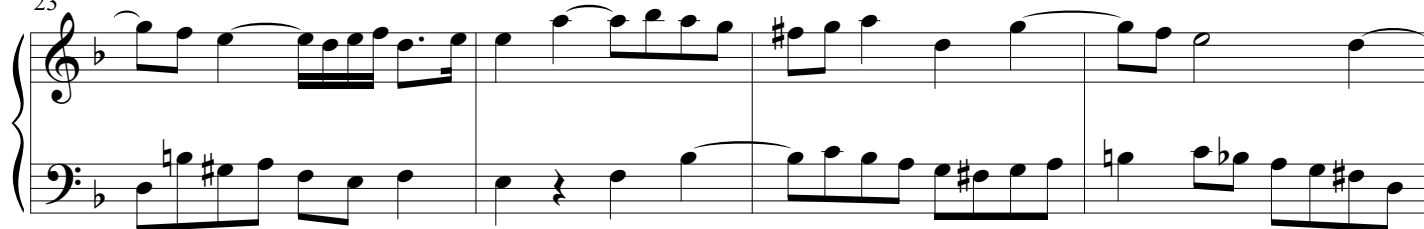
Measures 15-18 of the Fugue BWV 853. The first subject returns in the right hand, and the left hand continues with the second subject. The piece maintains its two-part texture.

Measures 19-22 of the Fugue BWV 853. The first subject returns in the right hand, and the left hand continues with the second subject. The piece maintains its two-part texture.

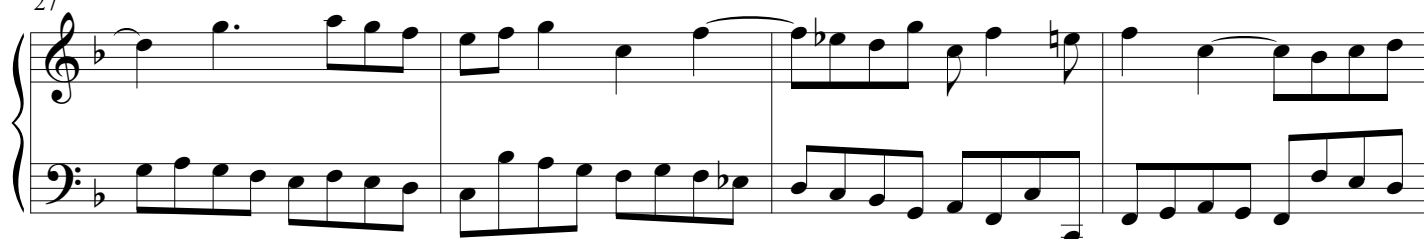
2

## Fuga VVVV - Piano I

23



27



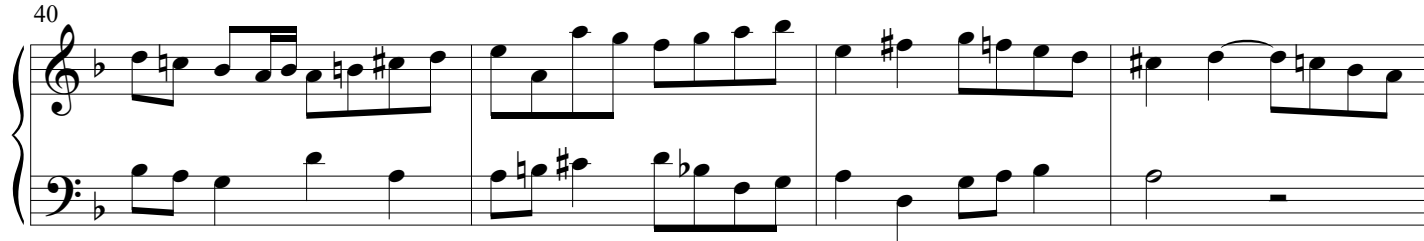
31



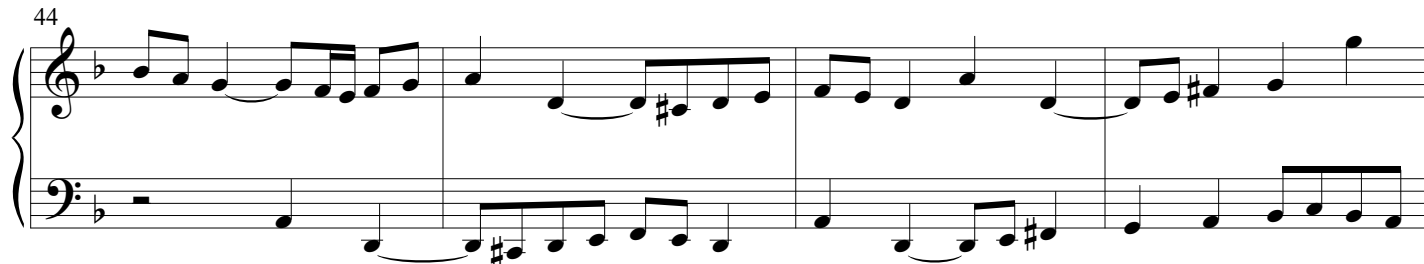
36



40



44



48

52

56

60

64

68

72

76

80

84