

Piano II

Præludium et Fuga XVI

BWV 885

J. Sebastian Bach
Arr. Peter H. Besseling

4

7

10

13

15

Musical notation for measures 15-17 of the Praeludium. Measure 15: Treble clef has a half note G4, a quarter note A4, and a quarter note Bb4. Bass clef has a half note G3 and a half note F3. Measure 16: Treble clef has a half note G4, a quarter note A4, and a quarter note Bb4. Bass clef has a half note G3 and a half note F3. Measure 17: Treble clef has a half note G4, a quarter note A4, and a quarter note Bb4. Bass clef has a half note G3 and a half note F3.

18

Musical notation for measures 18-20 of the Praeludium. Measure 18: Treble clef has a half note G4, a quarter note A4, and a quarter note Bb4. Bass clef has a half note G3 and a half note F3. Measure 19: Treble clef has a half note G4, a quarter note A4, and a quarter note Bb4. Bass clef has a half note G3 and a half note F3. Measure 20: Treble clef has a half note G4, a quarter note A4, and a quarter note Bb4. Bass clef has a half note G3 and a half note F3.

21

fuga

4

Musical notation for measures 21-25 of the Fuga. Measure 21: Treble clef has a half note G4, a quarter note A4, and a quarter note Bb4. Bass clef has a half note G3 and a half note F3. Measure 22: Treble clef has a half note G4, a quarter note A4, and a quarter note Bb4. Bass clef has a half note G3 and a half note F3. Measure 23: Treble clef has a half note G4, a quarter note A4, and a quarter note Bb4. Bass clef has a half note G3 and a half note F3. Measure 24: Treble clef has a half note G4, a quarter note A4, and a quarter note Bb4. Bass clef has a half note G3 and a half note F3. Measure 25: Treble clef has a half note G4, a quarter note A4, and a quarter note Bb4. Bass clef has a half note G3 and a half note F3.

8

Musical notation for measures 26-29 of the Fuga. Measure 26: Treble clef has a half note G4, a quarter note A4, and a quarter note Bb4. Bass clef has a half note G3 and a half note F3. Measure 27: Treble clef has a half note G4, a quarter note A4, and a quarter note Bb4. Bass clef has a half note G3 and a half note F3. Measure 28: Treble clef has a half note G4, a quarter note A4, and a quarter note Bb4. Bass clef has a half note G3 and a half note F3. Measure 29: Treble clef has a half note G4, a quarter note A4, and a quarter note Bb4. Bass clef has a half note G3 and a half note F3.

12

Musical notation for measures 30-33 of the Fuga. Measure 30: Treble clef has a half note G4, a quarter note A4, and a quarter note Bb4. Bass clef has a half note G3 and a half note F3. Measure 31: Treble clef has a half note G4, a quarter note A4, and a quarter note Bb4. Bass clef has a half note G3 and a half note F3. Measure 32: Treble clef has a half note G4, a quarter note A4, and a quarter note Bb4. Bass clef has a half note G3 and a half note F3. Measure 33: Treble clef has a half note G4, a quarter note A4, and a quarter note Bb4. Bass clef has a half note G3 and a half note F3.

16

Musical notation for measures 34-37 of the Fuga. Measure 34: Treble clef has a half note G4, a quarter note A4, and a quarter note Bb4. Bass clef has a half note G3 and a half note F3. Measure 35: Treble clef has a half note G4, a quarter note A4, and a quarter note Bb4. Bass clef has a half note G3 and a half note F3. Measure 36: Treble clef has a half note G4, a quarter note A4, and a quarter note Bb4. Bass clef has a half note G3 and a half note F3. Measure 37: Treble clef has a half note G4, a quarter note A4, and a quarter note Bb4. Bass clef has a half note G3 and a half note F3.

20

24

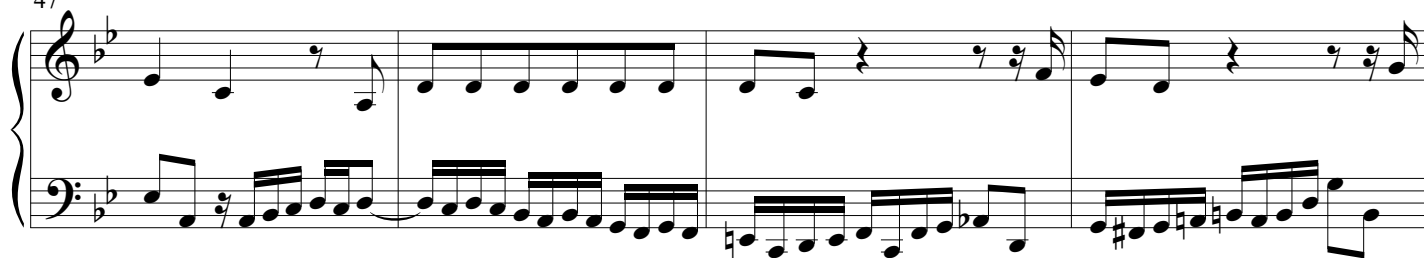
30

35

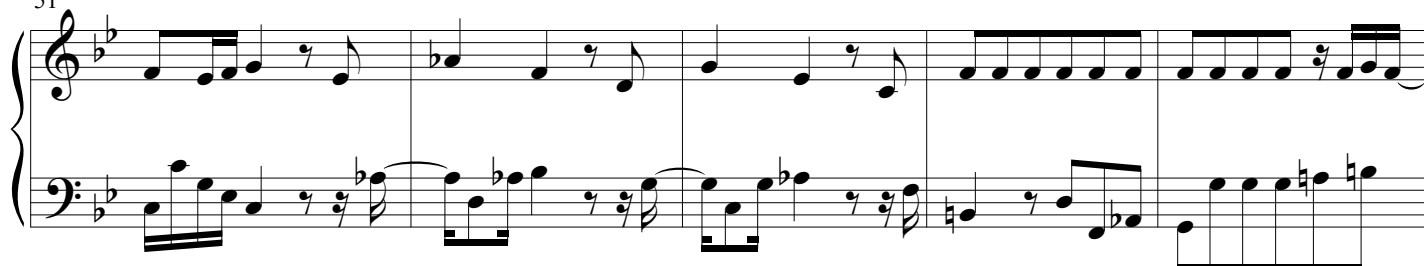
40

43

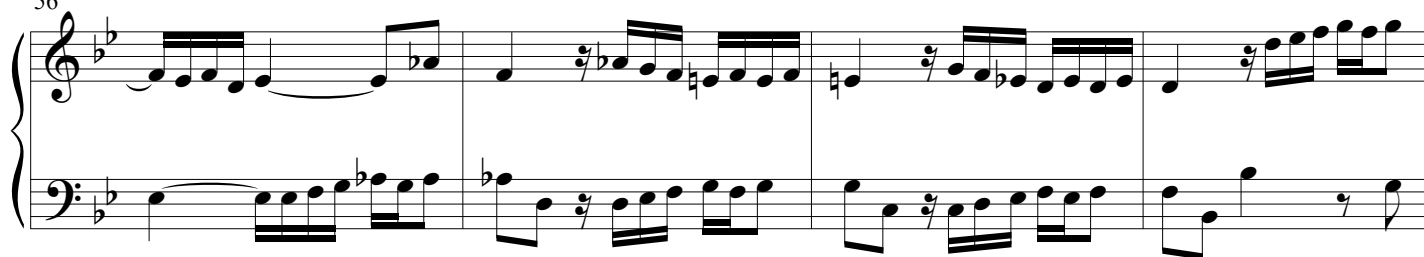
47



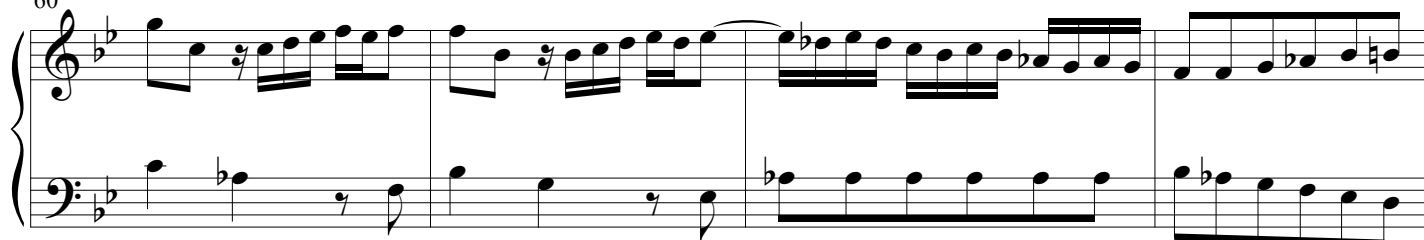
51



56



60



64



69



