

Piano II

Præludium et Fuga XVI

BWV 885

J. Sebastian Bach
Arr. Peter H. Besseling

4

7

10

13

15

Measures 15-17 of the Praeludium. The key signature has two flats (B-flat and E-flat). Measure 15 features a half note in the treble and a half note in the bass. Measure 16 has a half note in the treble and a half note in the bass. Measure 17 has a half note in the treble and a half note in the bass.

18

Measures 18-20 of the Praeludium. Measure 18 has a half note in the treble and a half note in the bass. Measure 19 has a half note in the treble and a half note in the bass. Measure 20 has a half note in the treble and a half note in the bass.

21

fuga

4

Measures 21-25 of the Fuga. Measure 21 has a half note in the treble and a half note in the bass. Measure 22 has a half note in the treble and a half note in the bass. Measure 23 has a half note in the treble and a half note in the bass. Measure 24 has a half note in the treble and a half note in the bass. Measure 25 has a half note in the treble and a half note in the bass.

8

Measures 26-29 of the Fuga. Measure 26 has a half note in the treble and a half note in the bass. Measure 27 has a half note in the treble and a half note in the bass. Measure 28 has a half note in the treble and a half note in the bass. Measure 29 has a half note in the treble and a half note in the bass.

12

Measures 30-33 of the Fuga. Measure 30 has a half note in the treble and a half note in the bass. Measure 31 has a half note in the treble and a half note in the bass. Measure 32 has a half note in the treble and a half note in the bass. Measure 33 has a half note in the treble and a half note in the bass.

16

Measures 34-37 of the Fuga. Measure 34 has a half note in the treble and a half note in the bass. Measure 35 has a half note in the treble and a half note in the bass. Measure 36 has a half note in the treble and a half note in the bass. Measure 37 has a half note in the treble and a half note in the bass.

20

24

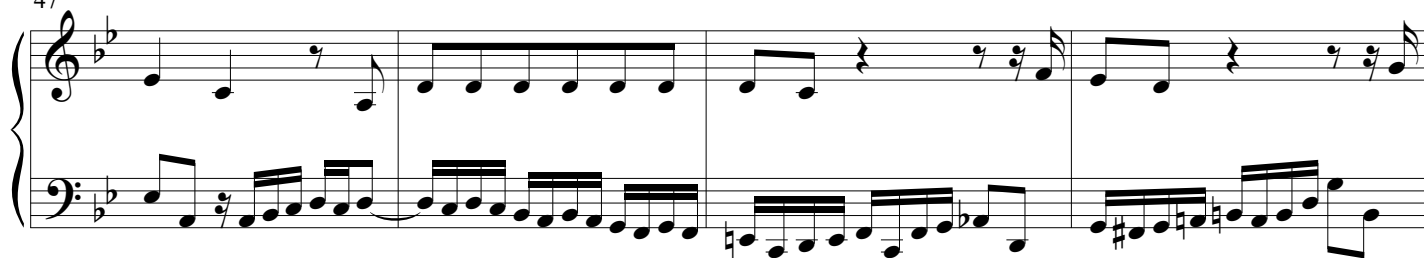
30

35

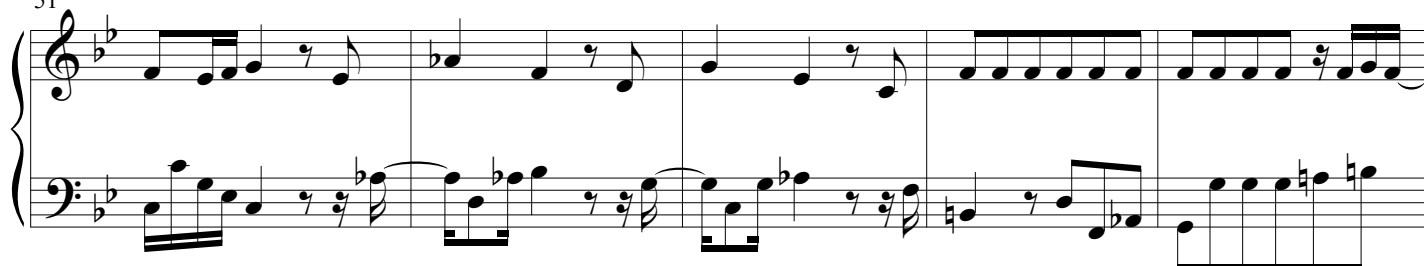
40

43

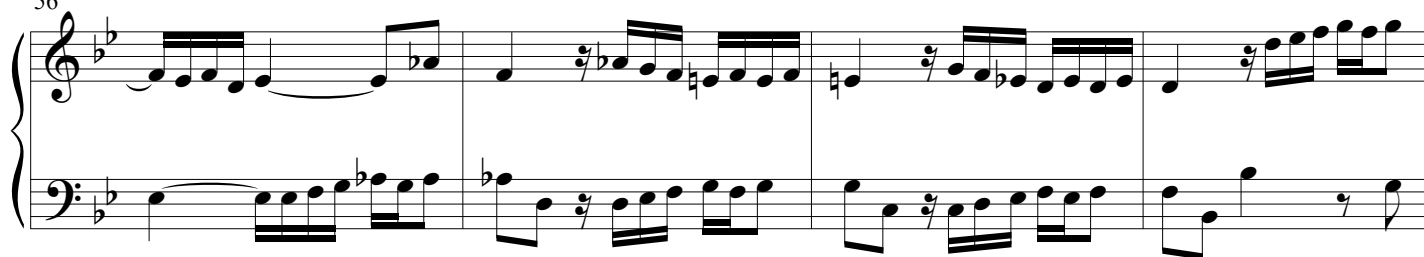
47



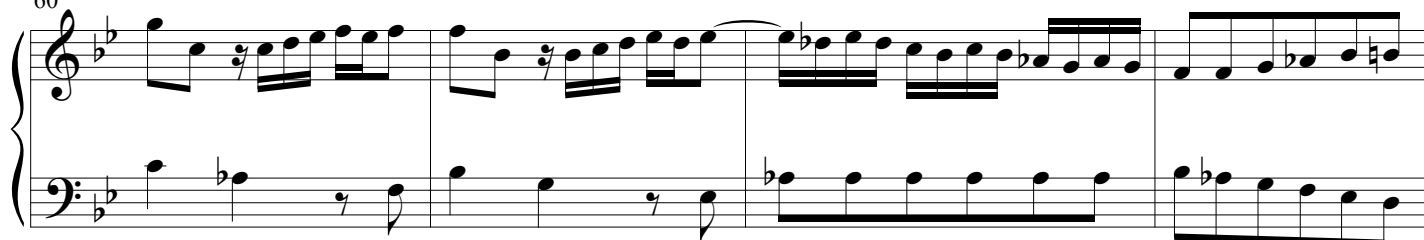
51



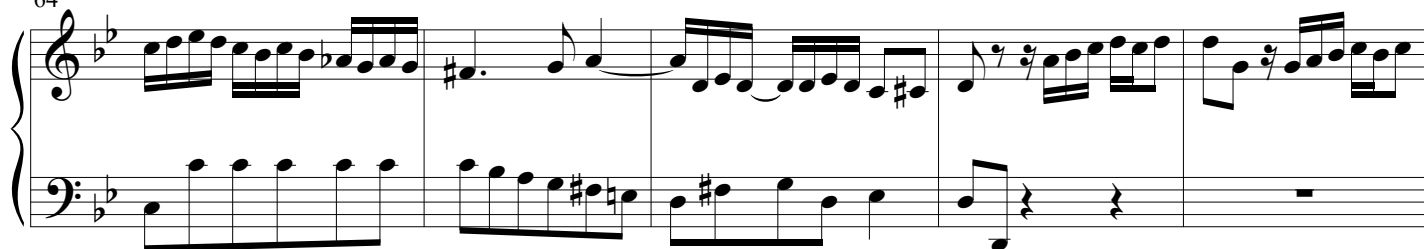
56



60



64



69



73

Measures 73-78 of the Praeludium et Fuga XVI, Piano II. The music is in G minor (three flats) and 3/4 time. The treble clef staff begins with a quarter rest, followed by a quarter note G4, a quarter note A4, and a quarter note B4. The bass clef staff begins with a quarter note G3, a quarter note A3, and a quarter note B3. The music continues with various rhythmic patterns, including eighth and sixteenth notes, and rests.

79

Measures 79-84 of the Praeludium et Fuga XVI, Piano II. The music continues from measure 78. The treble clef staff begins with a quarter rest, followed by a quarter note G4, a quarter note A4, and a quarter note B4. The bass clef staff begins with a quarter note G3, a quarter note A3, and a quarter note B3. The music concludes with a double bar line and repeat dots.