

Johann Sebastian Bach

Duetto for Flute and Alto Flute

No. 2

BWV 803

arr. Hideo KAMIOKA

Duetto for Flute and Alto Flute

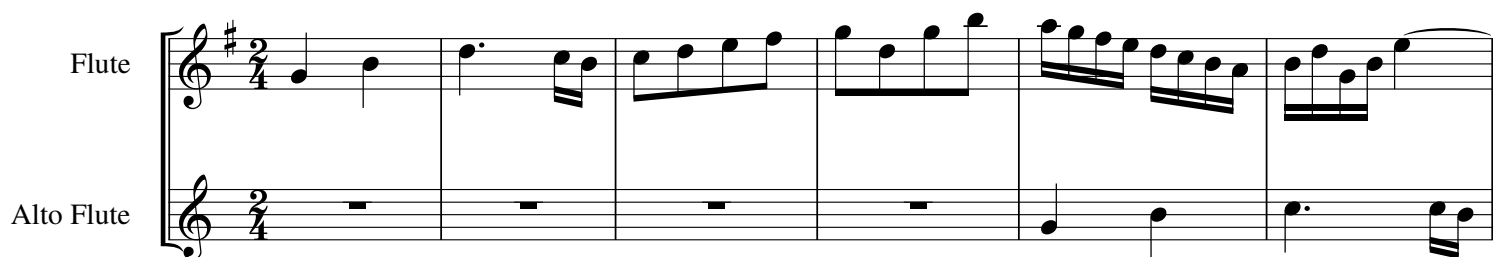
No. 2, BWV803

Johann Sebastian Bach

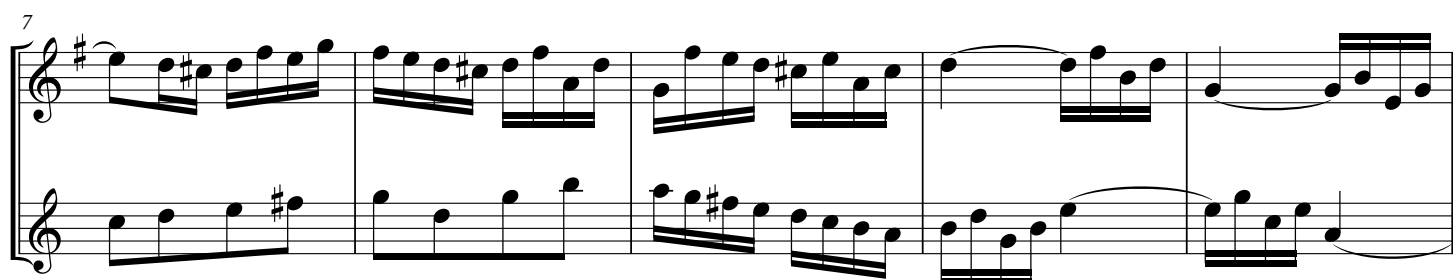
(arr. H. Kamioka)

Flute

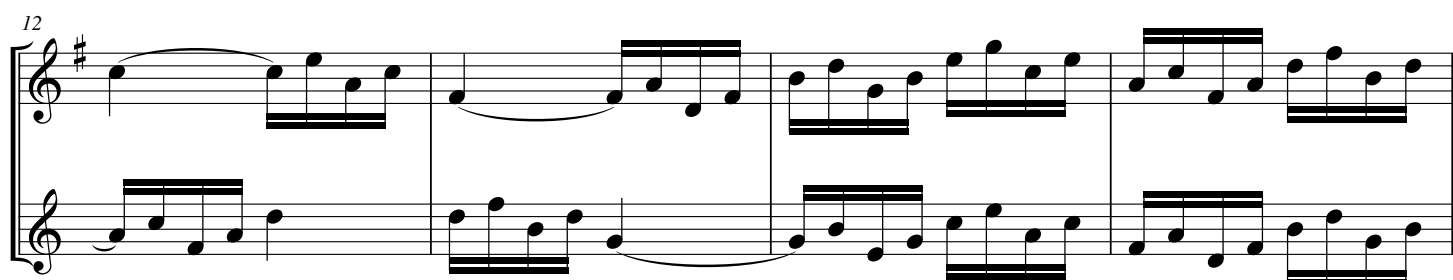
Alto Flute



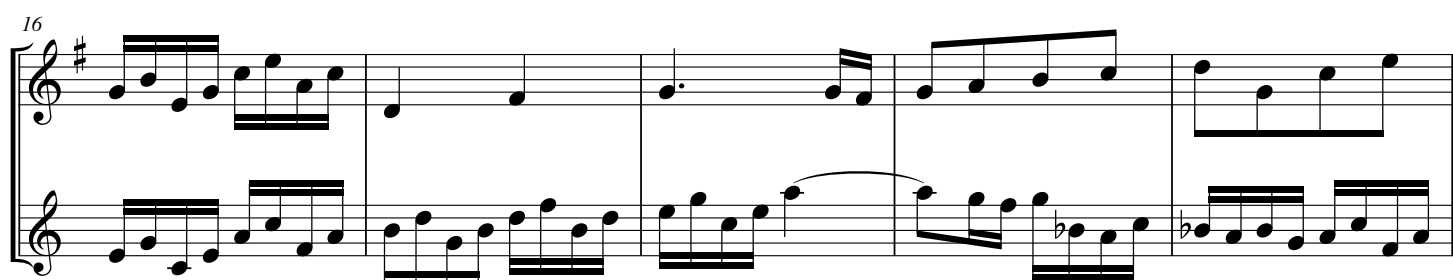
7



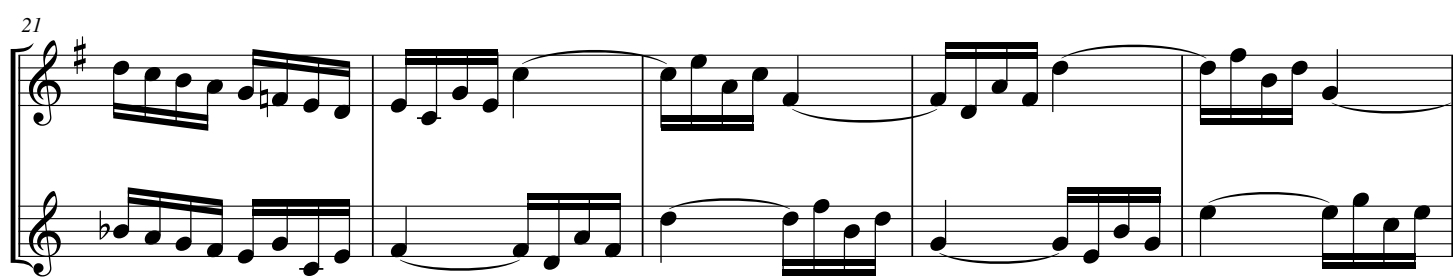
12



16



21



Duetto for Flute and Alto Flute No. 2

26

30

34

39

44

Duetto for Flute and Alto Flute No. 2

49

Measures 49-53 of the Duetto for Flute and Alto Flute No. 2. The music is in G major (one sharp). The flute part (top staff) features a melodic line with eighth and sixteenth notes, including a trill in measure 51. The alto flute part (bottom staff) provides a harmonic accompaniment with eighth and sixteenth notes, often in a lower register than the flute.

54

Measures 54-58. The flute part continues with a melodic line, featuring a trill in measure 56. The alto flute part provides a harmonic accompaniment, with some measures featuring a more active eighth-note pattern.

59

Measures 59-63. The flute part has a more active eighth-note melody in measure 59, followed by a trill in measure 60. The alto flute part provides a harmonic accompaniment, with some measures featuring a more active eighth-note pattern.

64

Measures 64-68. The flute part features a melodic line with eighth and sixteenth notes, including a trill in measure 66. The alto flute part provides a harmonic accompaniment, with some measures featuring a more active eighth-note pattern.

69

Measures 69-73. The flute part features a melodic line with eighth and sixteenth notes, including a trill in measure 71. The alto flute part provides a harmonic accompaniment, with some measures featuring a more active eighth-note pattern.

Duetto for Flute and Alto Flute No. 2

74

Measures 74-78 of the Duetto for Flute and Alto Flute No. 2. The key signature is one sharp (F#). The music features a complex interplay between the two instruments, with the upper staff (Flute) often playing melodic lines and the lower staff (Alto Flute) providing harmonic support and counter-melodies. The notation includes various note values, rests, and dynamic markings.

79

Measures 79-83 of the Duetto for Flute and Alto Flute No. 2. The key signature is one sharp (F#). The music continues with intricate melodic and harmonic development. The upper staff (Flute) shows more frequent sixteenth-note passages, while the lower staff (Alto Flute) maintains a steady rhythmic foundation with some melodic movement.

84

Measures 84-88 of the Duetto for Flute and Alto Flute No. 2. The key signature is one sharp (F#). The music features a mix of melodic and harmonic textures. The upper staff (Flute) has several measures with rests, allowing the lower staff (Alto Flute) to play more prominent melodic lines. The notation includes various note values, rests, and dynamic markings.

89

Measures 89-93 of the Duetto for Flute and Alto Flute No. 2. The key signature is one sharp (F#). The music continues with intricate melodic and harmonic development. The upper staff (Flute) has several measures with rests, allowing the lower staff (Alto Flute) to play more prominent melodic lines. The notation includes various note values, rests, and dynamic markings.

94

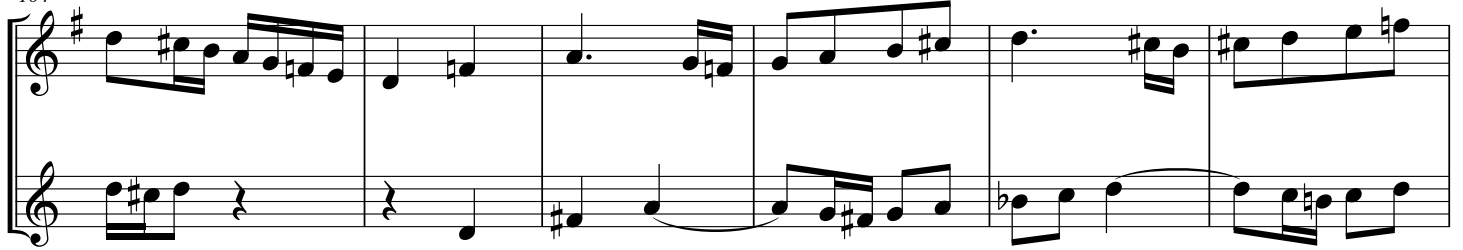
Measures 94-98 of the Duetto for Flute and Alto Flute No. 2. The key signature is one sharp (F#). The music features a mix of melodic and harmonic textures. The upper staff (Flute) has several measures with rests, allowing the lower staff (Alto Flute) to play more prominent melodic lines. The notation includes various note values, rests, and dynamic markings.

Duetto for Flute and Alto Flute No. 2

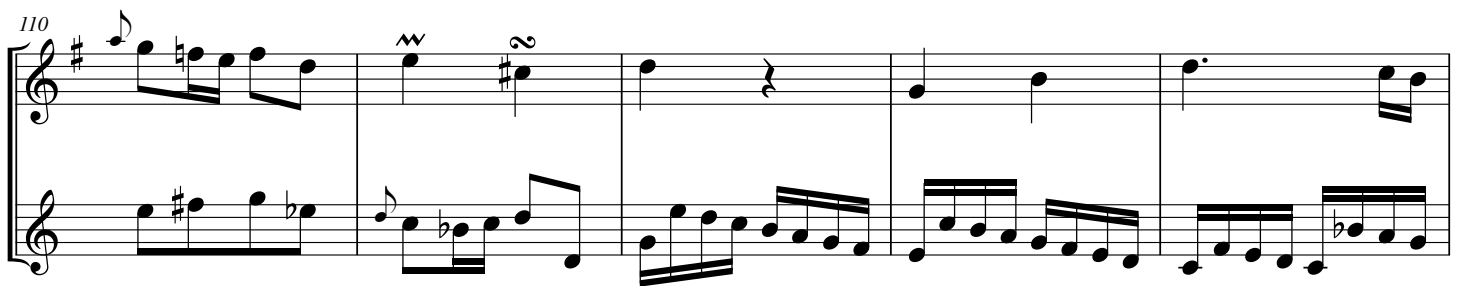
99



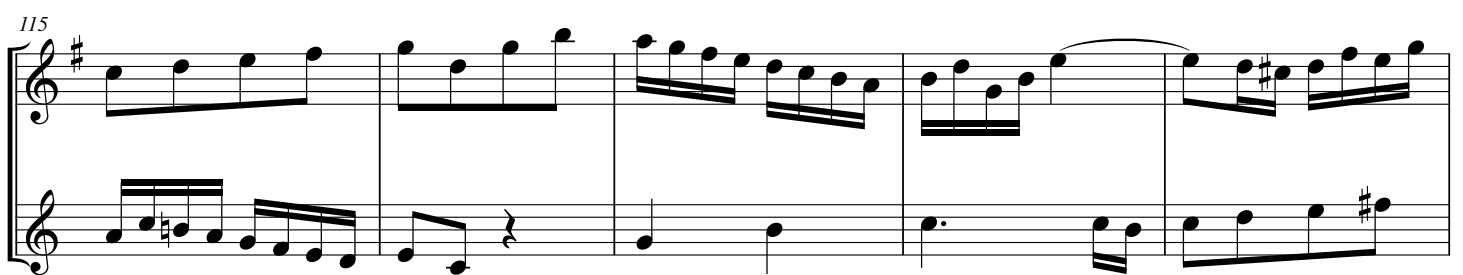
104



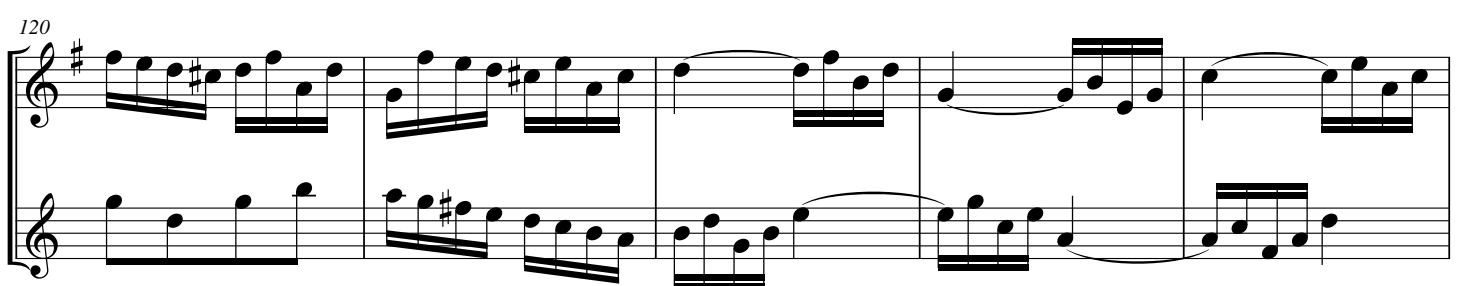
110



115



120



Duetto for Flute and Alto Flute No. 2

125

130

135

140

145