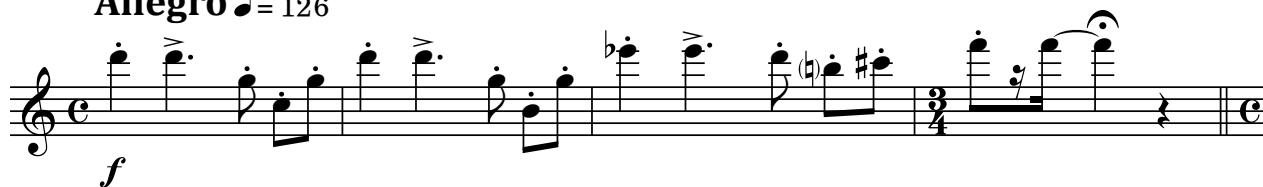
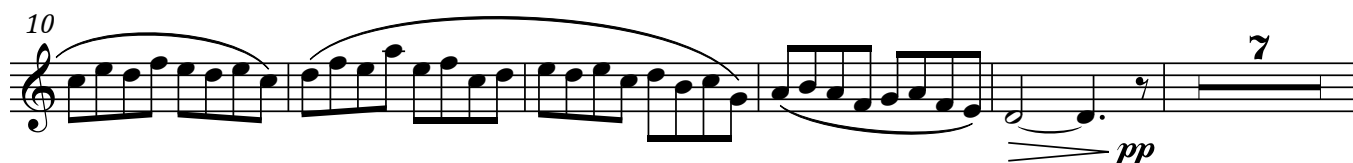
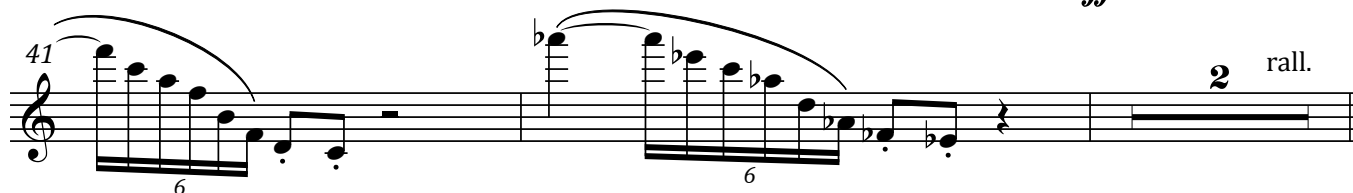


Quintet

I. Parade

Tamás Beischer-Matyó

Allegro ♩ = 126**Moderato** ♩ = 92**Allegro** ♩ = 126**Un poco vivace** ♩ = 144

Moderato ♩ = 92

Allegro ♩ = 126

p *ppp* *f*

Allegretto ♩ = 108

pp

accel.

Allegro ♩ = 126

f

45 51 54 57 60 62 65 68

Andante ♩ = 72

72 *p* semplice *tr*

76 *pp*

Moderato ♩ = 92

80 *p* *mp* *pp*

Allegro ♩ = 126

85 *f*

II. Intrigue

Capriccioso ♩ = 80

ff

5

2

Flute

4

9 *ff*

12 *p*

16 *p*

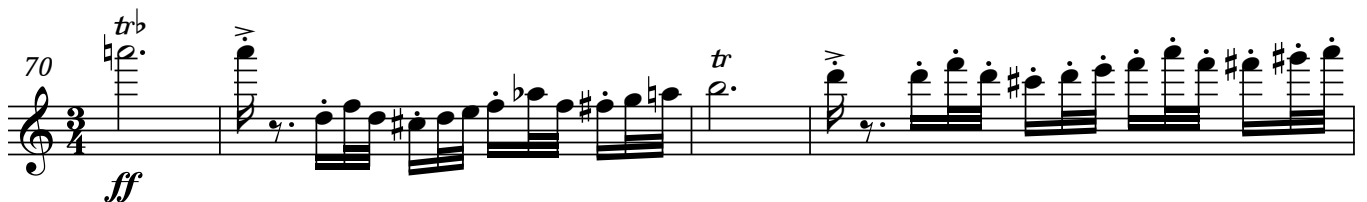
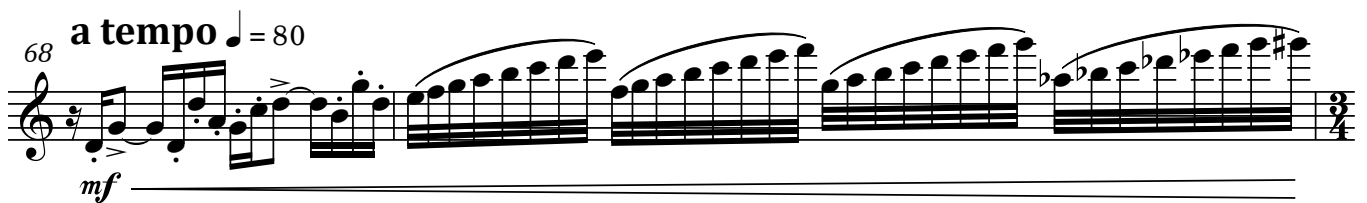
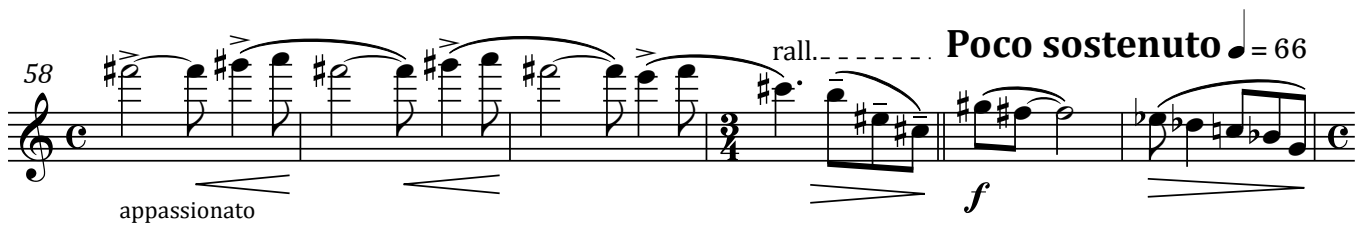
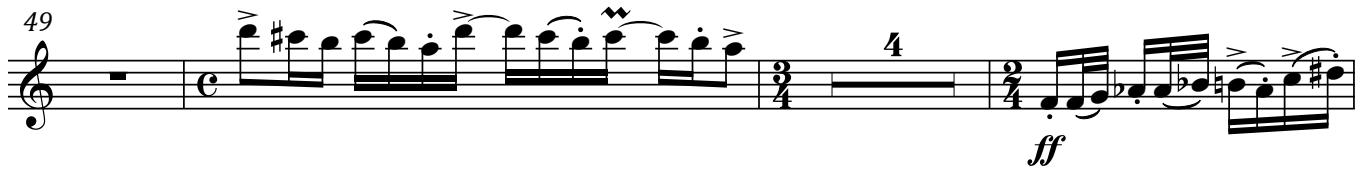
23 *p*

29

32 *ff* 6 *ff* espr.

37 *fff*

41 *ff* espr.



II. Intrigue

Adagio ♩ = 60

10 *p* 3 3 3

17 *f* > *p* *pp*

26 *f* > *p* *f* > *p* *f* > *p* *f* > *p* *f* < *f* < 8

41 *ff* *espr.* *ppp* *p* > *ppp* *p* > *ppp* *p* > *ppp*

47 *poco rit.* *a tempo* *p* *p* *espr.*

54 *rall. poco a poco* *mf* *pp* *senza espr.*

63 *picc. accel.* *picc. rall.* *picc. accel.* *picc. rall.* *picc. accel.* *picc. rall.* *sempre pp*

66 *picc. accel.* *picc. rall.* *picc. accel.* *picc. rall.* *picc. accel.* *picc. rall.*

69 *picc. accel.* *picc. rall.* *picc. accel.* *picc. rall.* *picc. accel.* *picc. rall.*

72 *accel.* ----- **Vivacissimo** ♩ = 144

78

81

84 *flatt.* *tr* *tr* *tr^b* *tr^b* *tr^b*

90 **subito a tempo** (♩ = 60)

f *espr. e poco parlando*

98 *rall.* -----

103 **a tempo, ma più sost.** ♩ = 52

ppp *p* *ppp* *ppp* *espr.* *f*

125 *rall. poco a poco al fine* -----

mf *espr.* *pp* *pppp*

IV. Heavy

Allegro molto vivace ♩ = 168

8

10

13

17

22

26

31

37

ff

p

ff

mf

42

46

48

53

56

60

64

68

73

76

ff

flatt.

ff

rall.

a tempo

pp senza espr.

tr

tr

Measures 42 to 76 of a musical score for Flute. The score is written in treble clef with a key signature of one flat (B-flat). The time signature changes from 3/4 to 12/4 at measure 53. The music features various rhythmic patterns, including eighth and sixteenth notes, and rests. Dynamic markings include *ff* (fortissimo) and *pp* (pianissimo). Performance instructions include *a tempo*, *pp senza espr.*, *flatt.*, *rall.*, and *tr* (trill). The score is divided into systems of five measures each, with measure numbers 42, 46, 48, 53, 56, 60, 64, 68, 73, and 76 indicated at the start of their respective systems.

Flute

10

81

83 *ff* 6

87 *tr* 6

91 *tr* 6

94 *tr* 6

96 *tr* 6

98 *tr* 6

100 *tr* 6

104

107

V. Fairy Queen

Allegretto gentile ♩ = 108

2

p

9

14

19

pp

27

p

Flute

12

