

Mass in B minor, BWV 232

Piano Transcription

Johann Sebastian Bach (1749)

Arr. Ruoshi Sun (2021)

22. Sanctus

3

3

4

3

3

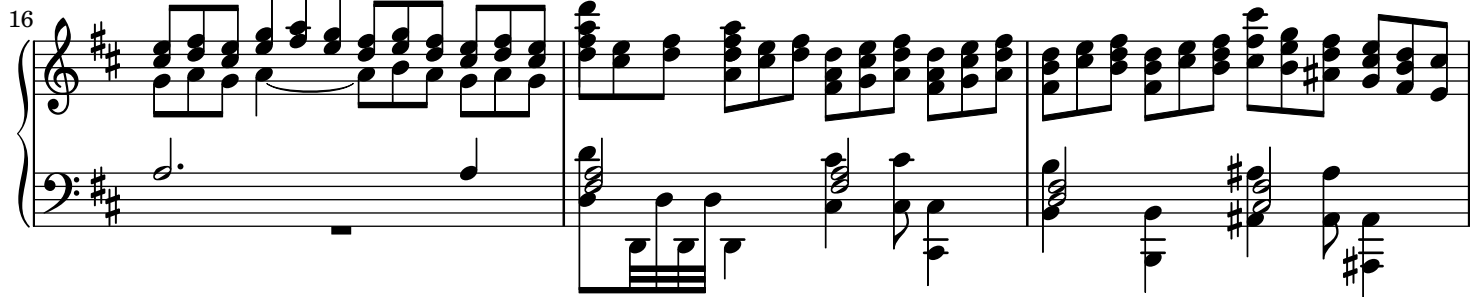
3

7

10

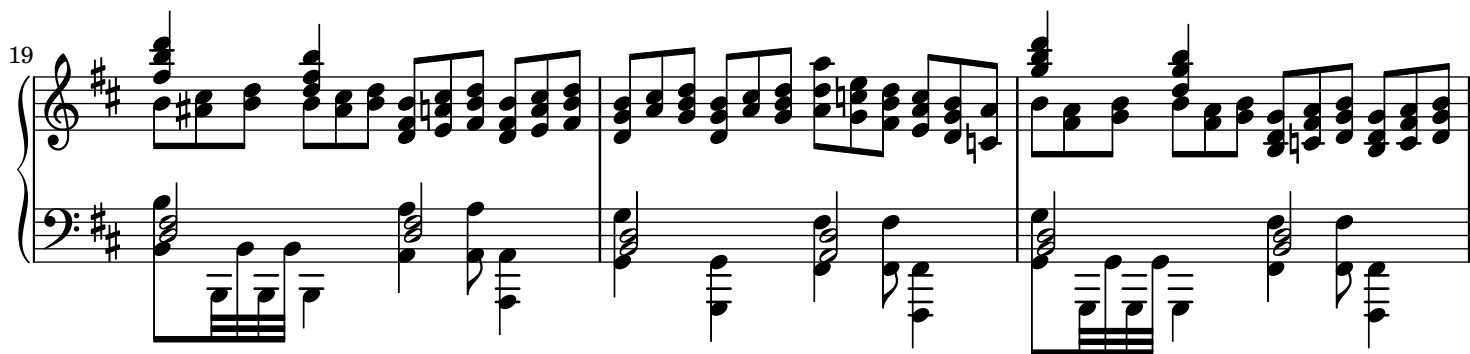
13

16



System 16: Treble and bass staves in D major. The treble staff features a complex texture of chords and eighth-note patterns. The bass staff provides a harmonic foundation with sustained chords and moving lines.

19



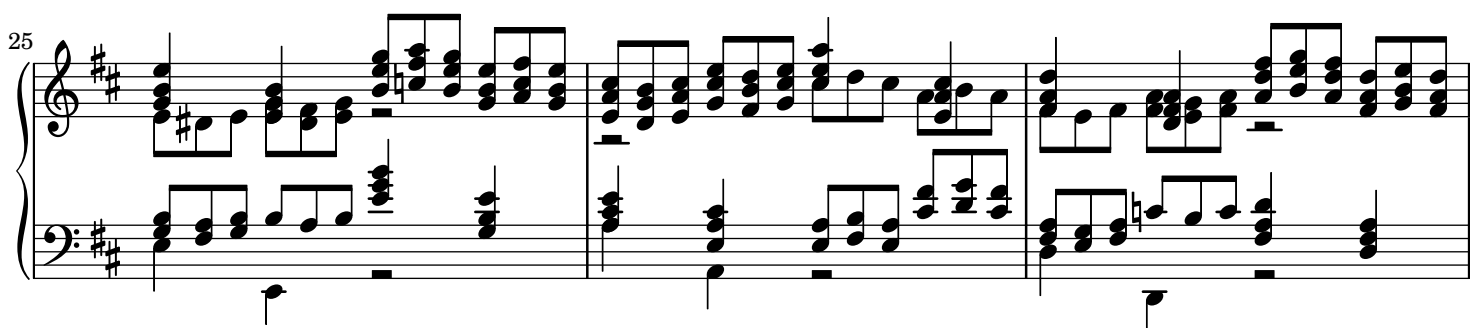
System 19: Continuation of the musical texture. The treble staff shows a series of chords with some chromatic movement. The bass staff continues with a steady accompaniment.

22



System 22: The treble staff introduces more melodic activity with eighth-note runs. The bass staff remains primarily chordal.

25



System 25: The treble staff features a more active melodic line. The bass staff continues with a supportive harmonic role.

28



System 28: The final system on the page. The treble staff has a flowing melodic line. The bass staff provides a solid harmonic base.

31

Measures 31-33 of a musical score in D major. The treble staff features a melodic line with eighth and sixteenth notes, including grace notes. The bass staff provides a harmonic accompaniment with chords and moving lines. Measure 33 ends with a double bar line.

34

Measures 34-36 of a musical score in D major. The treble staff continues the melodic development with more complex rhythmic patterns. The bass staff maintains the harmonic support. Measure 36 ends with a double bar line.

37

Measures 37-39 of a musical score in D major. The treble staff features dense chordal textures. The bass staff continues with a steady accompaniment. Measure 39 ends with a double bar line.

40

Measures 40-42 of a musical score in D major. The treble staff shows a continuation of the chordal patterns. The bass staff has a more active line with eighth notes. Measure 42 ends with a double bar line.

43

Measures 43-45 of a musical score in D major. The treble staff features a melodic line with some rests. The bass staff has a more active line with eighth notes. Measure 45 ends with a double bar line.

46

Measures 46-48 of a musical score in D major. The treble staff features a melodic line with some rests. The bass staff has a more active line with eighth notes. Measure 48 ends with a double bar line.

48

Measures 48-53: Treble clef has rests. Bass clef contains a melodic line with eighth and sixteenth notes, including grace notes in measures 48 and 50.

54

Measures 54-59: Both staves feature active eighth and sixteenth note patterns. Measure 56 includes a sharp sign on a note in the treble clef.

60

Measures 60-65: Treble clef contains eighth notes. Bass clef contains a mix of eighth and sixteenth notes, with grace notes in measures 61 and 62.

66

Measures 66-71: Treble clef features chords and eighth notes, with grace notes in measures 66 and 67. Bass clef has a simple eighth-note line.

72

Measures 72-77: Treble clef contains chords, with a trill (tr) in measure 74. Bass clef contains a mix of eighth and sixteenth notes.

78

Measures 78-83: Treble clef contains chords, with grace notes in measures 78 and 79. Bass clef contains a mix of eighth and sixteenth notes, with grace notes in measures 82 and 83.

84

System 1 (measures 84-89) features a treble and bass staff in D major. The treble staff contains complex chords and arpeggios, with a fermata over measure 89. The bass staff provides a steady eighth-note accompaniment. Measure numbers 84, 85, 86, 87, 88, and 89 are indicated above the treble staff.

90

System 2 (measures 90-95) continues the musical texture. The treble staff has a fermata over measure 95. The bass staff continues with eighth-note accompaniment. Measure numbers 90, 91, 92, 93, 94, and 95 are indicated above the treble staff.

96

System 3 (measures 96-101) shows further development of the musical ideas. The treble staff includes a fermata over measure 101. The bass staff maintains the eighth-note accompaniment. Measure numbers 96, 97, 98, 99, 100, and 101 are indicated above the treble staff.

102

System 4 (measures 102-107) features a treble staff with a fermata over measure 107. The bass staff continues with eighth-note accompaniment. Measure numbers 102, 103, 104, 105, 106, and 107 are indicated above the treble staff.

108

System 5 (measures 108-113) continues the musical texture. The treble staff has a fermata over measure 113. The bass staff continues with eighth-note accompaniment. Measure numbers 108, 109, 110, 111, 112, and 113 are indicated above the treble staff.

114

System 6 (measures 114-119) concludes the page. The treble staff has a fermata over measure 119. The bass staff continues with eighth-note accompaniment. Measure numbers 114, 115, 116, 117, 118, and 119 are indicated above the treble staff.

120

System 1 (measures 120-125): The right hand features a melody of eighth and sixteenth notes, while the left hand provides a steady eighth-note accompaniment. Measure 124 includes a trill on the right hand.

126

System 2 (measures 126-131): The right hand continues with a melodic line, and the left hand maintains the eighth-note accompaniment. Measure 129 features a trill on the right hand.

132

System 3 (measures 132-137): The right hand plays a series of chords and eighth notes. The left hand continues the eighth-note accompaniment. Measure 136 includes a trill on the left hand.

138

System 4 (measures 138-143): The right hand features a more complex melodic line with sixteenth notes. The left hand continues the eighth-note accompaniment.

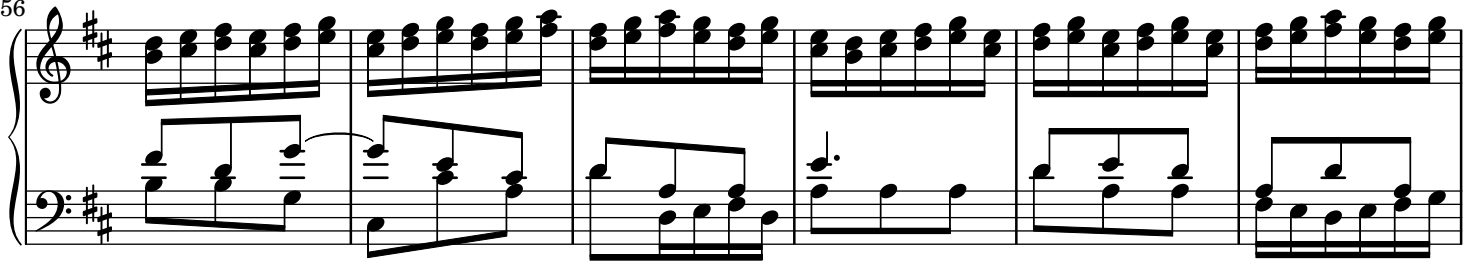
144

System 5 (measures 144-149): The right hand continues with a melodic line, and the left hand maintains the eighth-note accompaniment. Measure 147 includes a trill on the right hand.

150

System 6 (measures 150-155): The right hand features a melodic line, and the left hand continues the eighth-note accompaniment. Measure 153 includes a trill on the left hand.

156



162

