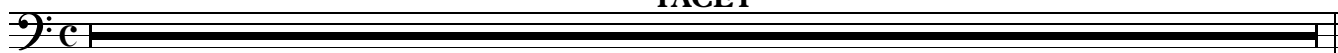


# Symphony no.7

## I. Kinderwelt

Introduzione. Adagio  $\text{♩}=108$

TACET



## II. Zeit der Leidenschaften

1 **Larghetto**  $\text{♩}=96$   
8

Cl.



12

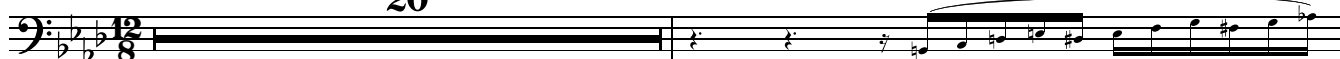
Ob.



*pp* < >

17

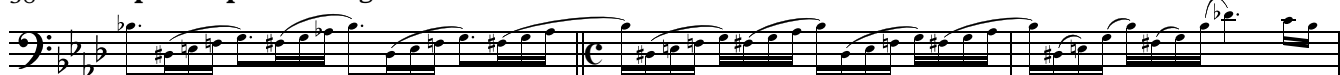
20



Vln. 1

38

**poco a poco stringendo**



41

**Allegro moderato**  $\text{♩}=120$



*p* < >

*p* < >

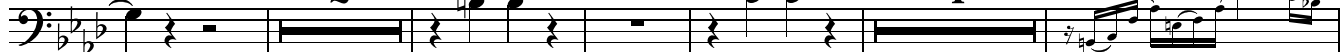
*p* < >

*(p)* <

50

**A**

2



*p* < >

*p* < >

Cl.

61



*f*

*p*

*f*

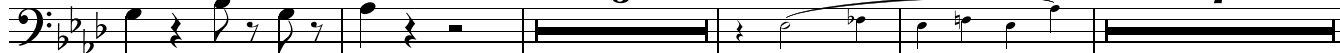
*p*

66

**B** Ob.

3

7



*f*

*p*

Orchestra 2, Tenor Trombone (Bass Clef)

2

80 Ob. 5

89 Vln.1

92 **C** *f*

100

108 **D** 3 8 Ob.

123 *f* *f*

131 **E** 4 Vln. 1 3 *f* 2

142 2 4 *f* *p*

152 Vln.1

156 2 *p* *p* *p*

164 **F** 17 Fl. *(p)* *f*

186 5 Vln.1

196 **G**

*ff*

204

212 **H**

*p*

228

*p* < >

237

*f*

242 **J**

*f*

251

*f*

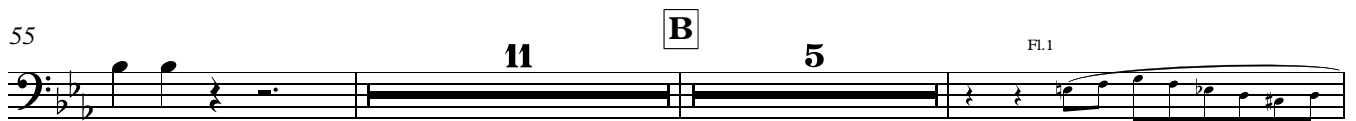
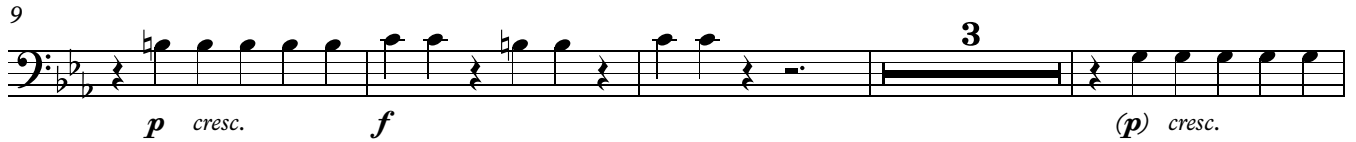
262

*mf* *f*

269

*ff*

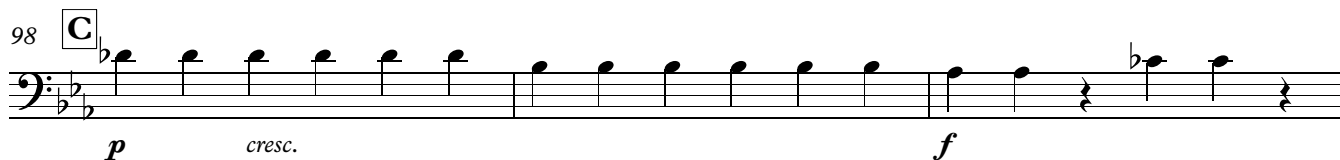
## III. Endlicher Sieg des Göttlichen

1 Presto  $\text{♩} = 96$ 

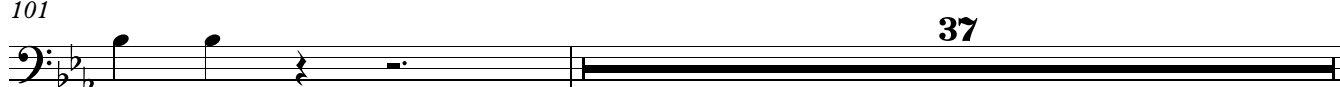
93



98



101



139



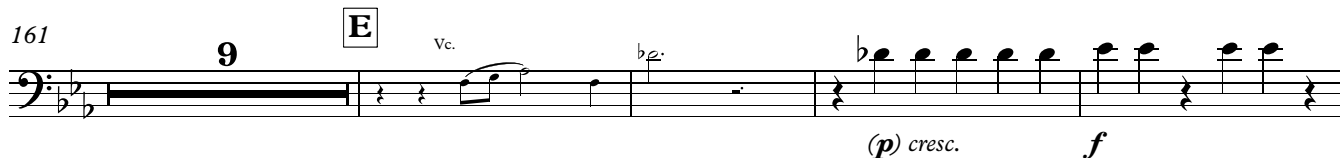
146



157



161



174



Orchestra 2, Tenor Trombone (Bass Clef)

6

183



188



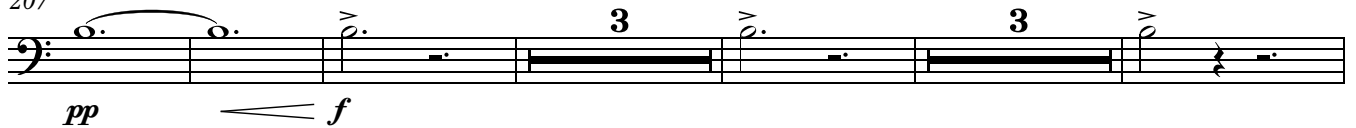
198



202



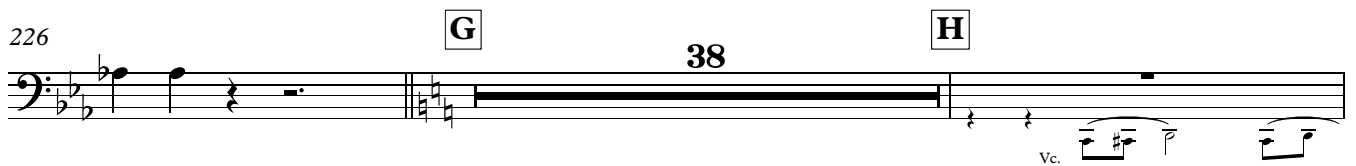
207



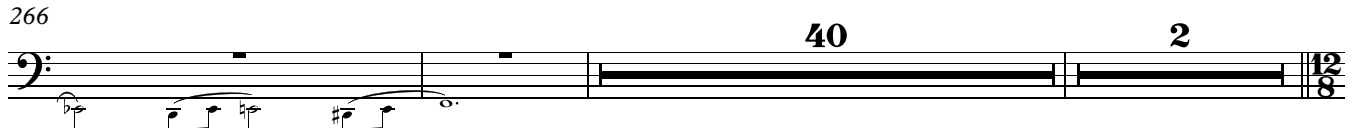
218



226



266



310 **Adagio** (♩=132)

310 **Adagio** (♩=132)

Vln. 1

*mf*  $\leftarrow$  *ff*  $\rightarrow$

11

325 **I**

325 **I**

Vln. 1

*mf*  $\leftarrow$  *ff*  $\rightarrow$

13

342 Vln. 1

342 Vln. 1

*(mf)*  $\leftarrow$  *ff*  $\rightarrow$

9

355

355

Vln. 1

*pp*