

2nd Flute

Symphony No.1, Op.20

Louis Spohr
(1784-1859)

I.

Adagio

13

22

46

54

62

72

82

101

110

f

f

f

p

Allegro

21

f

A

fp

fp

p

6

sfz

p

sfz

f

6

C

8

f

9

D

2

ff

ff

dim.

pp

6

2nd Flute

2

122 **E** *p* 7

134 **F** *f*

140 *sfz* *sfz*

147 **G** 7 1. 3 2. 7

165 *f* **H** 6

175 **I** 6 *f* *f*

187 **J**

194

200

205 4

214 **K** 7 *f* 5

2nd Flute

3

229 *f* 3

236 **L** 8 **M** Ob.1 9

256 **N** *f* 7

267 **O** *ff* 2 *ff* 15

288 **P** 2 *p* 7

300 **Q** *f*

306 *sfz* *sfz*

313 **R** 5 *f* *f*

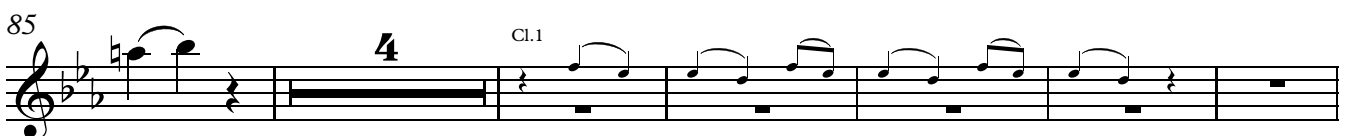
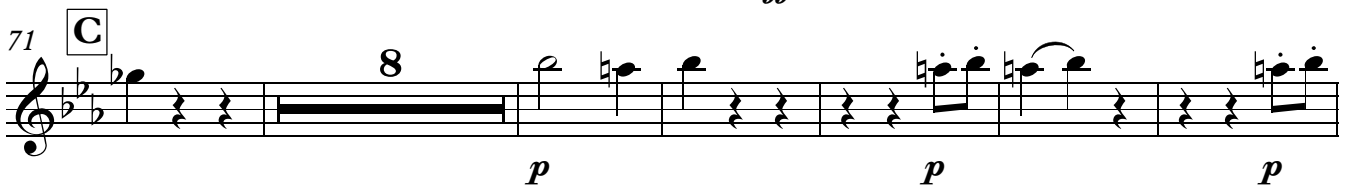
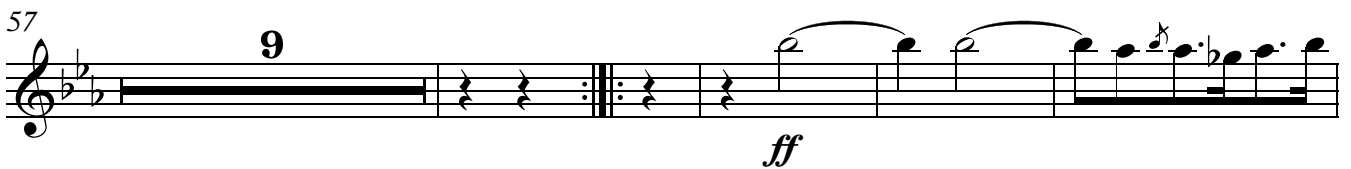
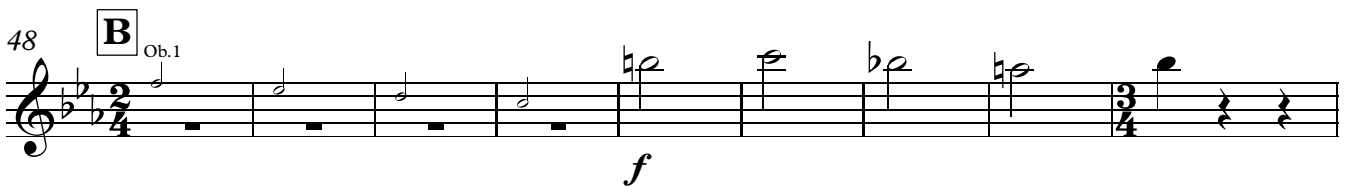
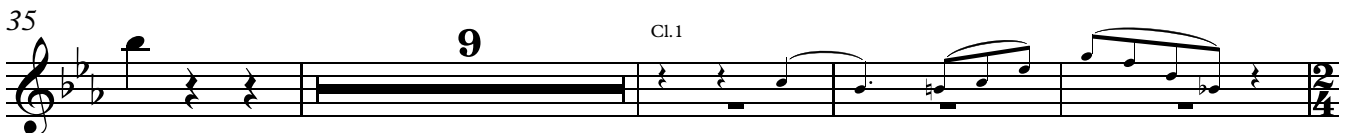
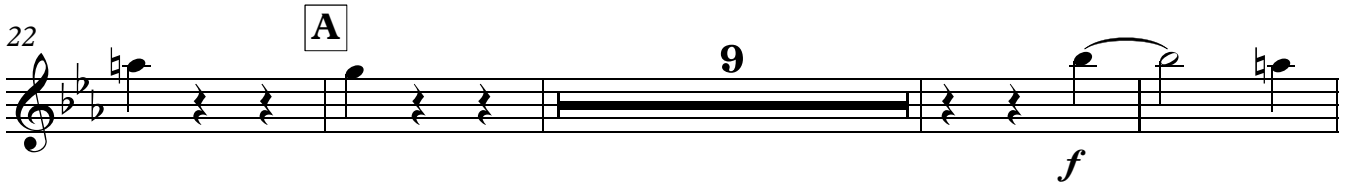
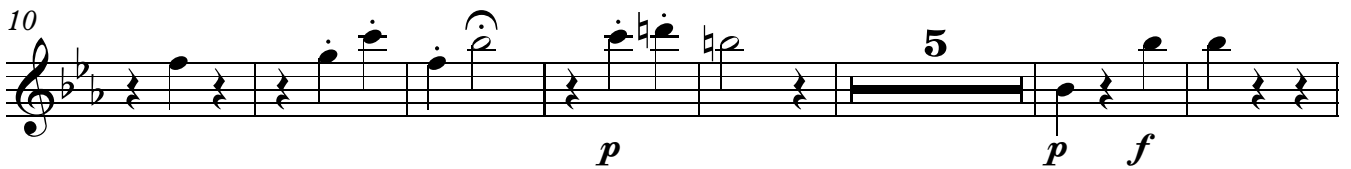
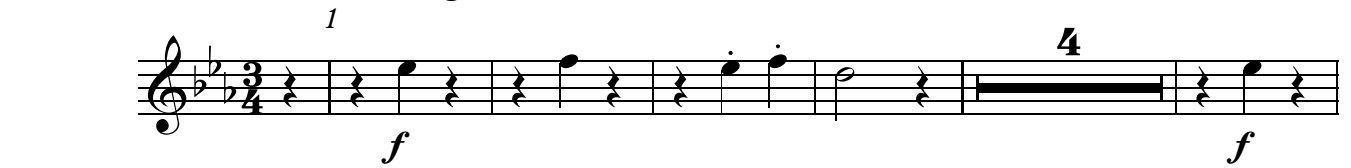
324 **S**

331

II.

1 **Larghetto con moto****TACET****Scherzo. Allegro**

III.



95 **D**

f *f*

105

f

115 **E**

9 Fl.1 *p*

129 **F** Ob.1 *pp*

144

f 9

159 **Trio**

Vln. 1 2nd time only *f* *f*³ 9

174 **G**

ff *f*³ *p* *f*³ 4 3

184

*f*³ *pp* 2

191

3 *f*³

199 **H**

3

2nd Flute

6

203 *Fl.1* *f* *sfz* *sfz*

209 *sfz* *fp* *fp* *fp* *p* 10

224 **I** 7 *p* 2

236 **J** *f* 4 *f*

247 *p* 5 *p* *f*

258 **K** 9 *f* 9 *Cl.1*

281 **L** *Ob.1* *f*

290 *Fl.1* 7

302 **M** *ff* 8 *p*

315 *p* *p* 9

329 **N** *f* 4 *f*

2nd Flute

7

339

5

f

349

O

9

Fl.1

p

363

9

P Ob.1

pp

f

379

8

f

IV.

Finale. Allegretto

1 16 **A** Vln. 1 13

32 **B** 2 Cl. 1 3 3 3 3 3 *f*

37 3 3 3 3 3 3

43 **C** *f* 3 3

51 **D** 9 Fl. 1

65 **E** 2 *f* 3 3 3

72 3

81 **F** *ff* *p*

88 *f*

94 **G** 9 Vln. 1

2nd Flute

9

109

2 3

pp

118 **H**

f 3 3 3 3

122

3 3 3

128 **I**

8 Ob.1 *f*

140 **J**

2 *f* 2

148 **K**

f 3 3 3 3

153

3 3 *p*

158

ff

162 **L**

2 *p* 11

179 **M**

13

2nd Flute

10

192 Cl.1

195 **N**

201 **O** 6

211 *sfz* *p* *f*

217 **P** 12 Fl.1

233 **Q** *f* 3 3 3

238 3

247 **R** *ff* 3 3 *p*

253 *f*

260 **S** 3 *p* *cresc.*

267 *f* 3 3 3 *ff*