

Tamás Beischer-Matyó

Concerto antico

for violin, cello and string orchestra

Violin I

Violin I

dedicated to László G. Horváth, Richárd Rózsa
and the Anima Musicæ Chamber Orchestra

Concerto antico

for violin, cello and string orchestra

I

5 Tamás Beischer-Matyó

Vivace ♩ = 138

pp

pp

13

Copyright Tamás Beischer-Matyó, 2020

http://beischermatyó.hu/concerto_antico

This work is licensed under the Creative Commons Attribution-NonCommercial-NoDerivatives 4.0 International License.
To view a copy of this license, visit <https://creativecommons.org/licenses/by-nc-nd/4.0/>

25

32

41

46

ff

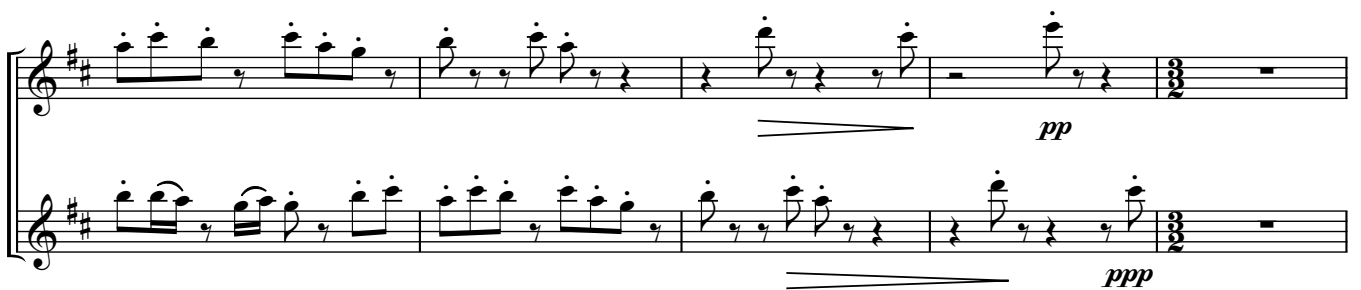
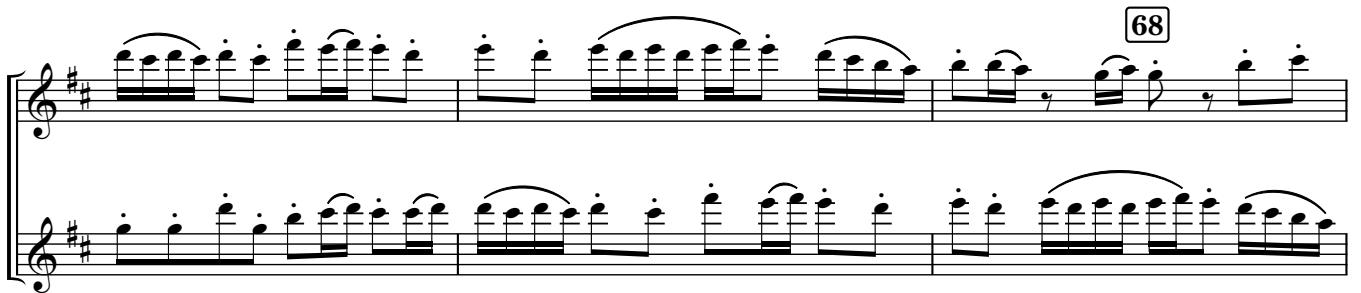
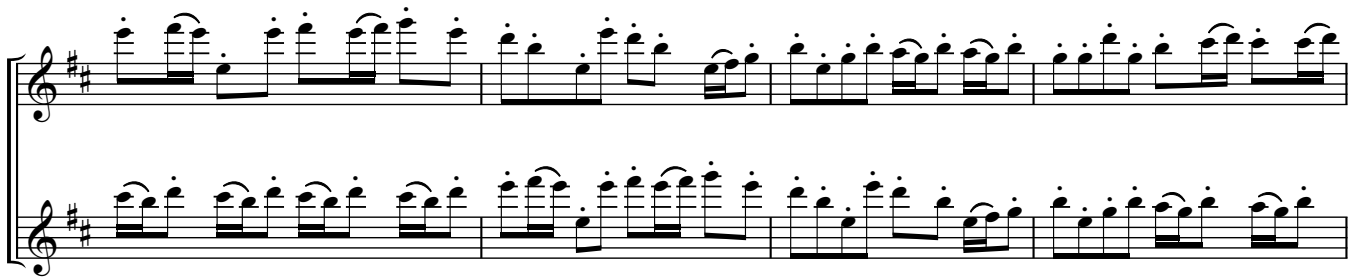
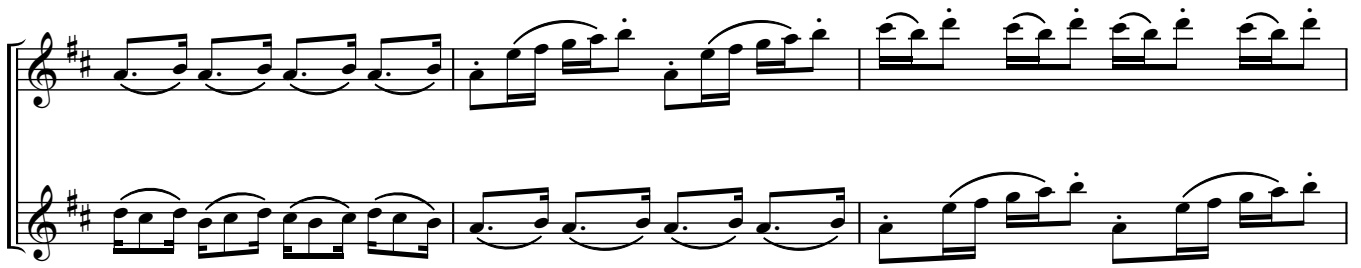
50

ff

ff

58

p



74 *rit.* **Allegro moderato** ♩ = 88

pp *f* *p* *mp* *pizz.* **79**

pp *f* *p* *mp* *pizz.*

f *arco* *pesante*

f *arco* *pesante*

solo **83** *p* *pp* *pp*

solo **87** **91** *p* *mf* *p* *mf*

ff *sfz*

97 **Vivo** ♩ = 112

p *f* *p* *f*

solo

rit. ----- a tempo ♩ = 112

106

ff *mf*

mp pp *f* *p*

solo

111

ff *tr* *tr* *tr*

ff *tr* *tr* *tr*

ff

116

rall. ----- ♩ = 76

pp *gliss* *mp* *pp*

pp *gliss* *mp* *pp*

rit. ----- ♩ = 69

al niente

2

2

125

rall. Adagio ♩ = 63

S. vln.

con sord.

129

rall. ♩ = 60 rall. ♩ = 58

ten.

p *ppp* *pp* *ppp* *pp*

135

rall. ♩ = 56

rall. ♩ = 54

rall. ----- ♩ = 52

ppp

139

Vivace ♩ = 138

senza sord.

p molto ritmico

senza sord.

p molto ritmico

147

157

162

171

180

139

Vivace ♩ = 138

senza sord.

p molto ritmico

senza sord.

p molto ritmico

147

157

f

f

162

mp

mp

f

f

171

mp

mp

f

f

180

mp

mp

188

f *mp* *f* *mp*

f *f*

195

f

203

ff *ff*

10 11 12 (13)

p *mf* *p* *mf*

210

p *mp* *p* *mp* *p*

220

p

rit. molto - - - - -

228

(rit. molto) - - - - - *a tempo* ♩ = 138*rall.* - - - ♩ = 88

234

a tempo ♩ = 138

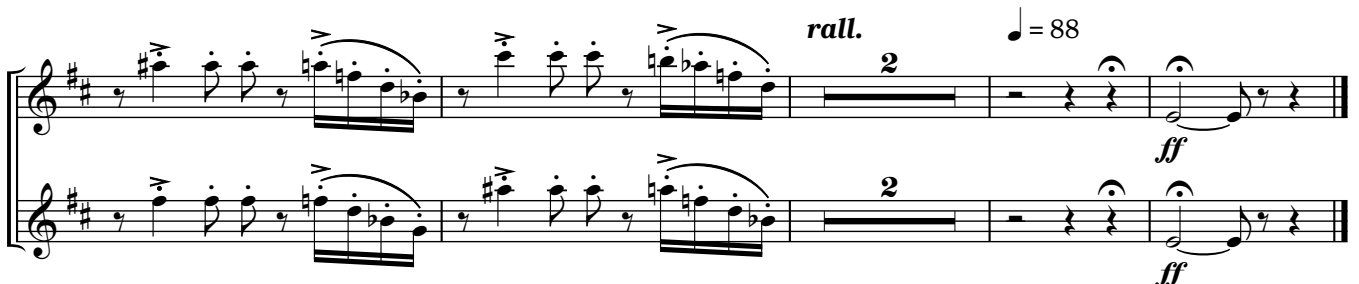
239

rall. ♩ = 88

♩ = 138

♩ = 88

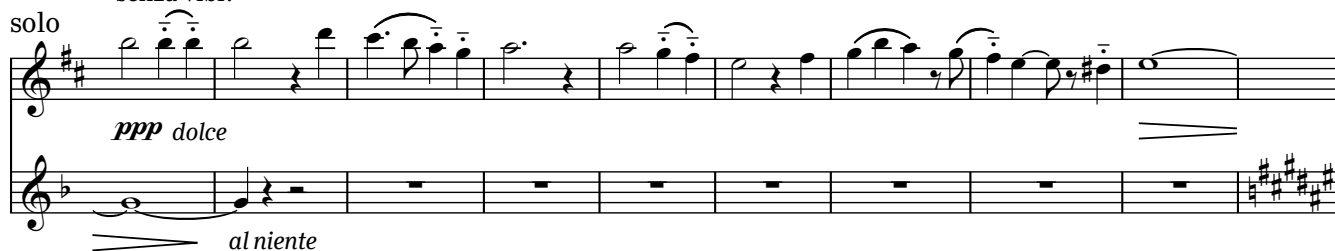
244

*rall.* ♩ = 88

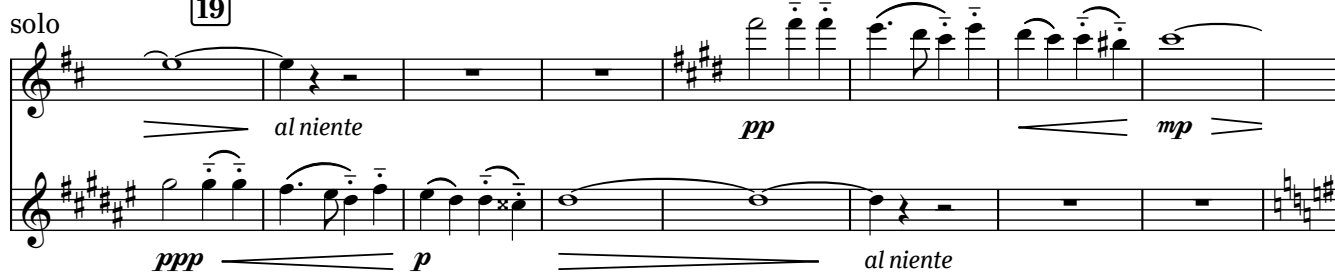
II

Con moto ♩ = 126con sord.
sul tasto, senza vibr.

10

con sord.
senza vibr.

19



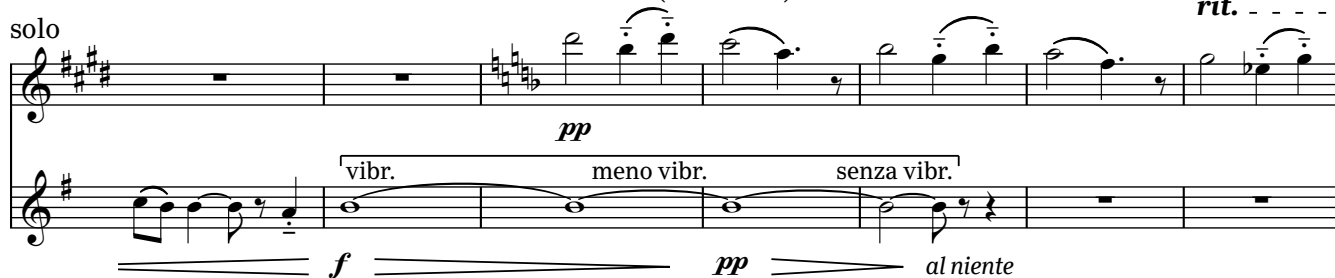
27



33

37

sul tasto (senza vibr.)

solo *(rit.) - - - a tempo*

43

rall. molto - - - -

47

solo **Un poco agitato** ♩ = 138

ppp
senza sord.
col legno

pp
senza sord.
col legno

pp

56

un poco tratt. ♩ = 112 **a tempo** ♩ = 138
(senza sord.)

solo

mf *pp*

ord.

p *ppp*

ord.

p *ppp*

61

col legno

pp *mp*

col legno

pp *mp*

68

rall. ----- **un poco tratt.** ♩ = 112

solo

sul tasto
(senza vibr.)

ppp

pp *pp*

pp

rit.

solo $\text{♩} = 112$ *rit.* $\text{♩} = 112$ *rit.*

[77] **Con moto** $\text{♩} = 126$ *rall.* *un poco tratt.* $\text{♩} = 112$

pp *mp* *ppp*

ord. *ppp* *mp* *ppp*

ord. *ppp* *mp* *ppp*

[89] *con sord.* *rall. molto* **Un poco agitato** $\text{♩} = 138$

p *ppp* *p* *mf*

con sord. *p* *ppp*

S. vln. *tr*

senza sord. 100 *rall. molto* - - *al* $\text{♩} = 84$ 104 *un poco tratt.* $\text{♩} = 112$

pp *mp* *p cantabile*

senza sord. *pp* *mp* *p cantabile*

110 *rit.*

a tempo 114 *col legno* *mp*

col legno *mp*

120 *f*

f

123 *rit.* - - - - - *Appassionato* $\text{♩} = 168$

ord. *ff*

ord. *ff*

131

140

144

tratt. ♩ = 152 *rit.* - *a tempo* ♩ = 168

148

152

156

160

rall.

al ♩ = 84

D. b.
col legno

ppp

168

Con moto ♩ = 126

solo

p

(D. b.)

p

p

177

solo

p

p

p

183

solo

191

rit. *a tempo*

solo

ppp

(spicc.)

pp

(spicc.)

pp

197

rit. - - - - *a tempo*

202

rall. - - - - **Lento molto** ♩ = 48

S. vc.

con sord.

211

rit. - - - *a tempo* ♩ = 48*rit.* ♩ = 112 *poco accel.*

215

Un poco agitato ♩ = 138

S. vln.

221

♩ = 112

(con sord.)

229

♩ = 76

III

Allegretto ♩ = 88

sul pont. - - -> ord.

8

sul pont. - - -> ord.

sul pont. - - -> ord.

16

sul pont. - - -> ord.

24

sul pont. - - -> ord.

33 sul pont. - - > ord. *mp pp* *mp pp* sul pont. - - > ord.

42 *pp* *f* *p*

mp

52

57 *ff*

66

73 *Meno mosso* ♩ = 76 *ppp*

S. vln.

84 *pp*

92

mf *p* *mf* *p*

102 *pp*

110 **Allegretto** ♩ = 88

f *ff*

115 *pizz.* *p*

123 arco, sul pont.
trem. *pp*

col legno *mp*

133 **Allegro vivace** ♩ = 152 *f* *mp*

138 ord. *p*

142 col legno *mp*

146

mf *f* *ff*

ord.

153

mp *f*

159

ff

167

marcato

173

pp *mp* S. vln. S. vc.

182

p *p*

188

S. vln. *mp* *mf* *p* *mp* *mp*

193

199

S. vln. *mf* *mp* *mf* *mf* *mp*

The image shows a musical score for the song "The Rose Tree". It consists of two staves, a vocal line and a piano accompaniment line, both in G major (one sharp). The key signature is indicated by a single sharp (F#) on the F line of the staff. The time signature is 4/4. The score is divided into two measures, 206 and 213. Measure 206 starts with a mezzo-forte (*mf*) dynamic. Measure 213 ends with a piano (*p*) dynamic. The vocal line features a melody with various intervals, including a large leap from G4 to E5 in measure 206. The piano accompaniment provides a harmonic support with chords and moving lines. The score is written in a standard musical notation with a treble clef and a key signature of one sharp.

S. vln. 217

p *pp* *p* *mp*

225

ff

The musical score for 'The Rose Tree' is presented on a single staff. It begins with a treble clef and a key signature of one flat (B-flat). The tempo is marked 'Allegretto' and the time signature is 3/4. The score consists of two measures. The first measure contains a series of eighth notes, and the second measure contains a series of quarter notes. A dynamic marking of *mf* (mezzo-forte) is placed below the staff. A box containing the number '240' is positioned above the staff, indicating the tempo in beats per minute.

