

Johann Sebastian Bach  
(1685 - 1750)

# **Toccata and Fugue in D minor BWV 565**

Transcribed for solo Viola  
by Varun Soontornniyomkij

Inspired by Bruce Fox-Lefriche's transcription for solo violin

First published in March 2020  
Last revised in May 2023

Source scores used:

- Bach, J.S. *Toccata and Fugue in D minor, BWV 565*, ed. Wilhelm Rust in *Bach-Gesellschaft Ausgabe*, Volume 15. Leipzig: Breitkopf und Härtel, 1867. p. 267 - 275.

Contact: [ryan.varun@gmail.com](mailto:ryan.varun@gmail.com)

Creative Commons Attribution-ShareAlike 4.0

# Toccata and Fugue in D minor, BWV 565

Transcribed by Varun  
Soontornniyomkij

Transcribed for viola

Johann Sebastian Bach  
(1685 - 1750)

**Adagio** ♩ = 40

Ossia *f* *ad lib.* *pp*

3

5 **Prestissimo** ♩ = 70

7

9 optional *ad lib.* (starting slow, then accel.)

11 *cresc.-* *ad lib. & Ossia* (minor third double stops like Bar 3)

13 *f* **Allegro** ♩ = 60

15

16

17 *rit.*

18 *A tempo* (♩ = 60)

20 *ad lib.*

21 *a tempo*

23 *ad lib.* *Prestissimo* ♩ = 100

25

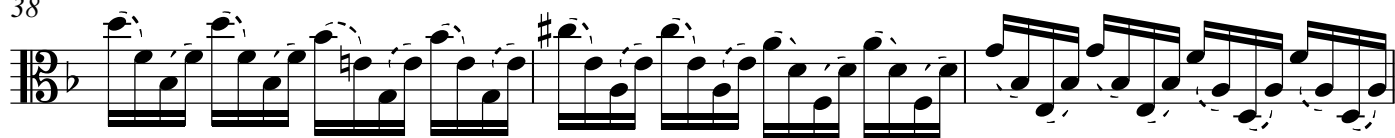
27 *cresc.*

*ff* *Lento* ♩ = 30 *ad lib.*

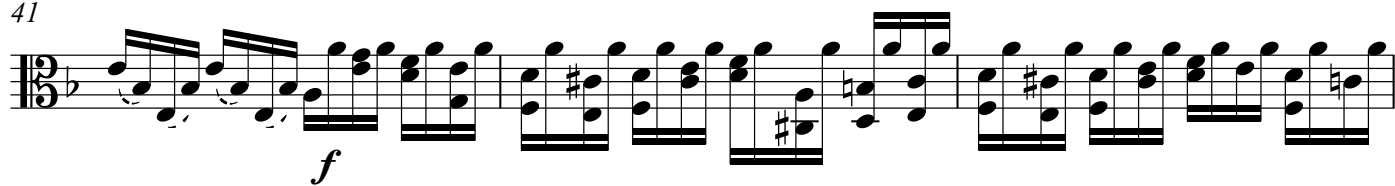
*mf* *Fugue* ♩ = 85

35

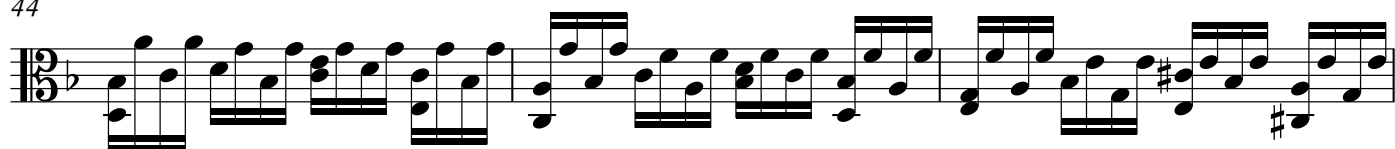
38



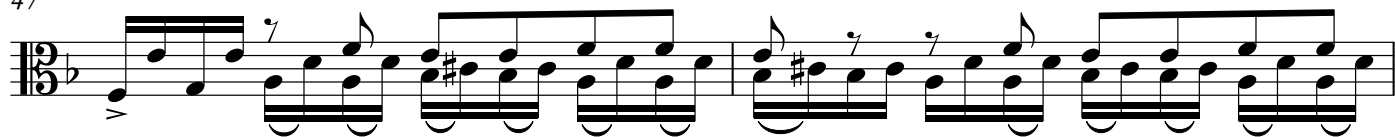
41



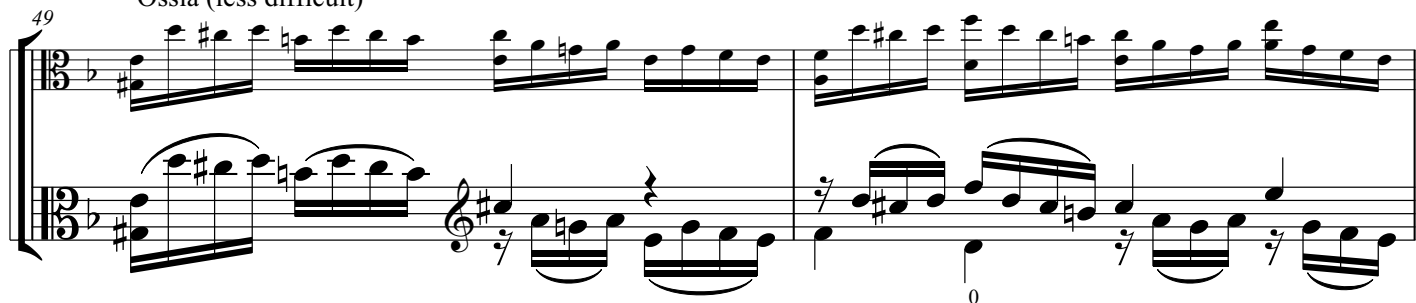
44



47



Ossia (less difficult)

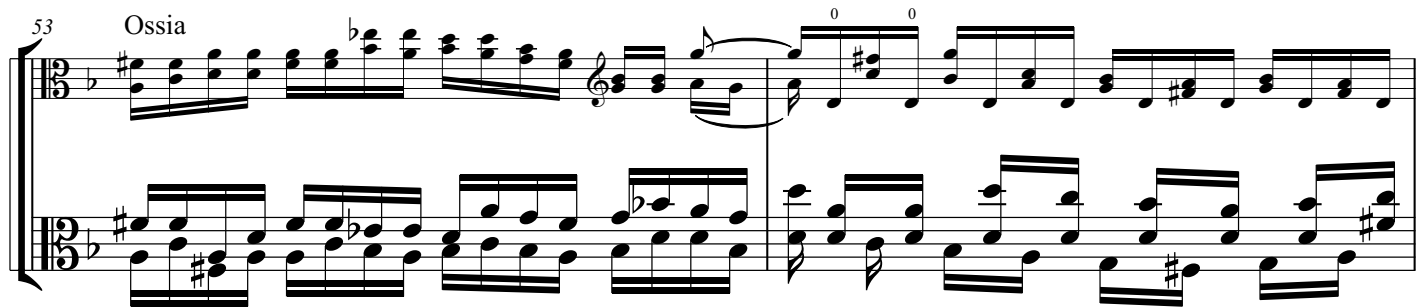


51



53

Ossia



55

Measures 55-56 of a musical score. The piece is in 12/8 time with a key signature of one flat (B-flat). The right hand uses a treble clef and the left hand uses a bass clef. Measure 55 features a complex chordal texture with many accidentals. Measure 56 continues this texture with some melodic movement in the right hand.

57

Measures 57-58. Measure 57 shows a more rhythmic and melodic development in both hands. Measure 58 features a prominent bass line in the left hand and a more active right hand.

59

Measures 59-60. Measure 59 includes a piano (*p*) dynamic marking. Measure 60 continues the piece with a similar texture, also marked with a piano (*p*) dynamic.

61

Measures 61-62. Measure 61 features a forte (*f*) dynamic marking. Measure 62 continues the piece with a similar texture, also marked with a forte (*f*) dynamic.

63

Measures 63-64. Measure 63 features a complex chordal texture. Measure 64 continues this texture with some melodic movement in the right hand.

66

*p* *f*

69

*p* *p*

72

*f* *f*

74

*p*

76

*poco a poco cresc.*

79

*poco a poco cresc.*

81

*poco a poco cresc.*

83

*f*

85

87

0 0

89

91

93

*p* 0 0

Ossia

*mf*

98

Ossia (less difficult)

*mf*

100

102

104

Ossia

108

111



114

116

*sub. **p** poco a poco cresc.-*

119

121

**ff**

123

125

0 0

127

**allargando rit. Recitativo**

130

131

**Adagissimo** ♩ = 40

133 **ad lib.** **Presto** ♩ = 60

136

137

138 **rit.** . . . . .

**Ossia (Adagio appassionato)**

139 **Vivace**

140

142

**Molto adagio** ♩ = 30

133 **ad lib.** **Presto** ♩ = 60

136

137

138 **rit.** . . . . .

**Ossia (Adagio appassionato)**

139 **Vivace**

140

142

**Molto adagio** ♩ = 30