

Johann Sebastian Bach
(1685 - 1750)

Toccata and Fugue in D minor BWV 565

Transcribed for solo Viola
by Varun Soontornniyomkij

Inspired by Bruce Fox-Lefriche's transcription for solo violin

First published in March 2020
Last revised in November 2023

Source scores used:

- Bach, J.S. *Toccata and Fugue in D minor, BWV 565*, ed. Wilhelm Rust in *Bach-Gesellschaft Ausgabe*, Volume 15. Leipzig: Breitkopf und Härtel, 1867. p. 267 - 275.

Contact: ryan.varun@gmail.com

Creative Commons Attribution-ShareAlike 4.0

Toccata and Fugue in D minor, BWV 565

Transcribed by Varun
Soontornniyomkij

Transcribed for Viola

Johann Sebastian Bach
(1685 - 1750)

Adagio ♩ = 40

f

ad lib. (faster)

Ossia *ad lib.*

pp

5 **Prestissimo** ♩ = 70

7

9 optional *ad lib.* (starting slow, then accel.)

cresc.

11 *ad lib. & Ossia* (minor third double stops)

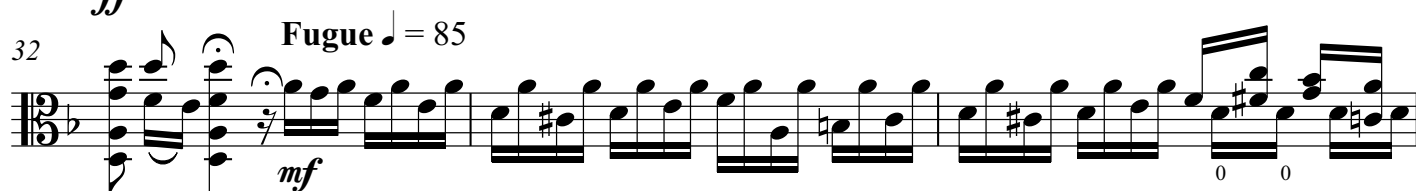
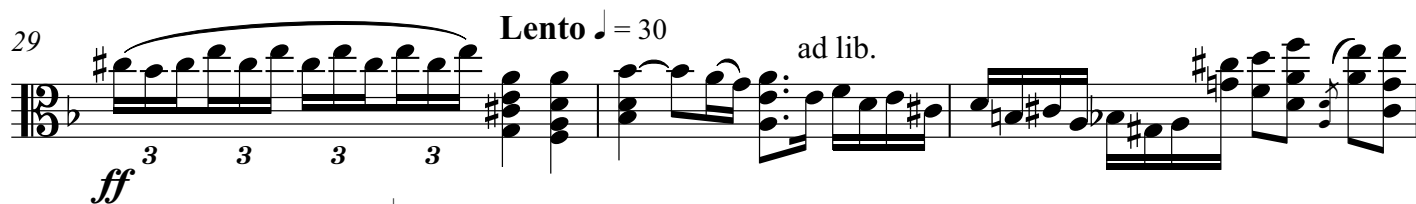
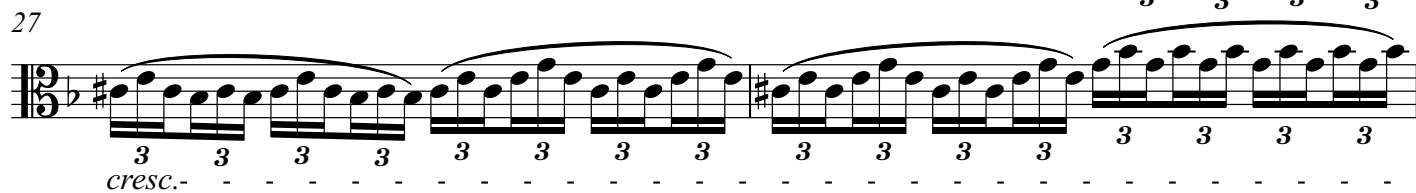
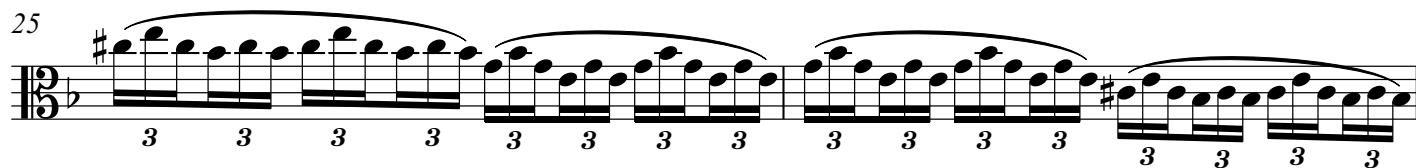
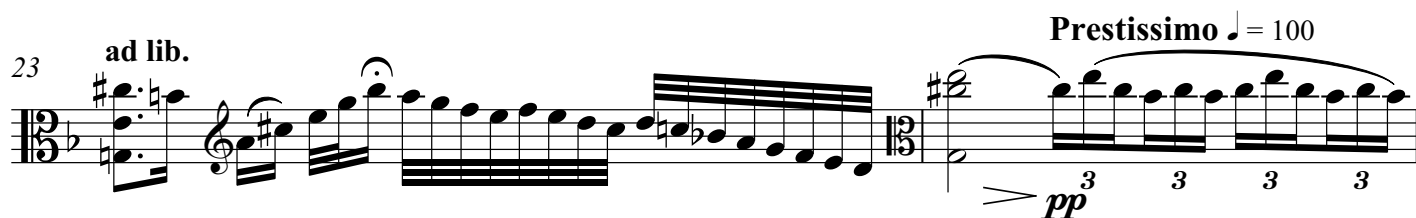
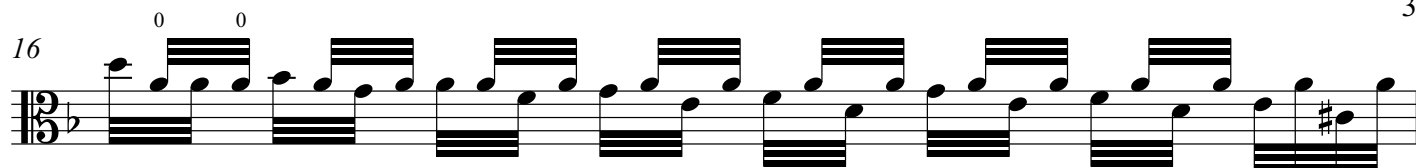
f

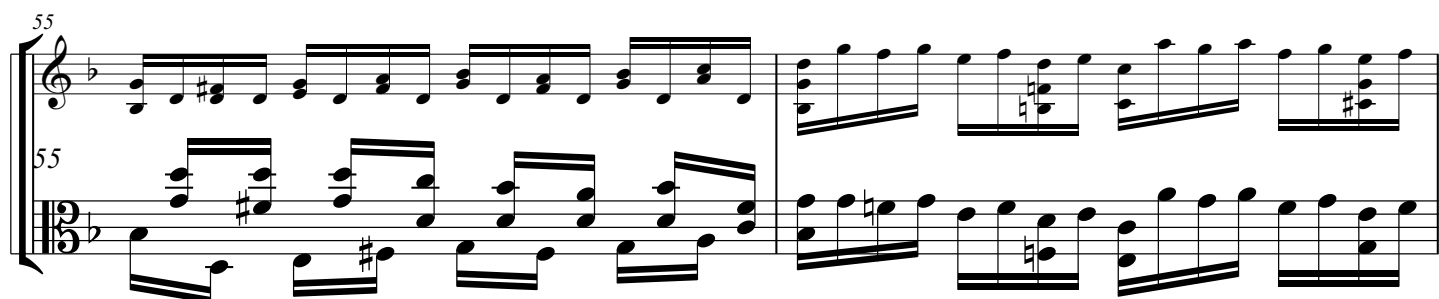
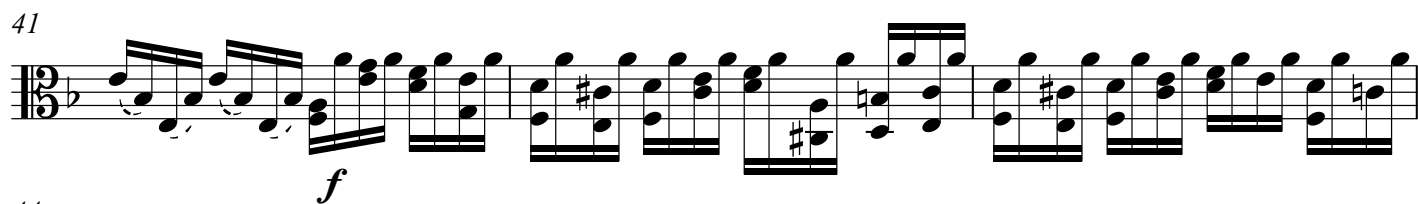
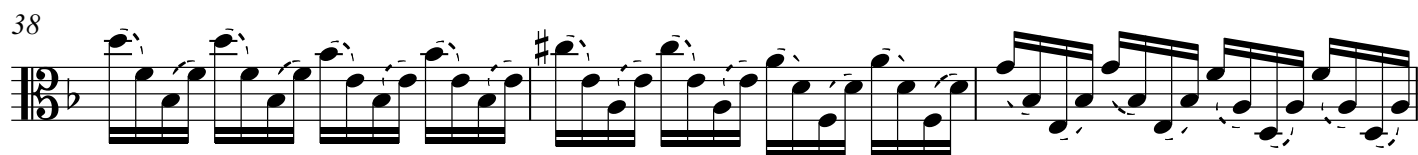
13 **Allegro** ♩ = 60

tr

f

15





This page of musical notation consists of six systems, each with a grand staff (treble and bass clefs) and a 3/8 time signature. The key signature has one flat (B-flat).

- System 1 (Measures 57-59):** Measures 57 and 58 feature a continuous eighth-note pattern in both hands. Measure 59 shows a dynamic shift to *p* (piano) with a crescendo hairpin.
- System 2 (Measures 60-62):** Measures 60 and 61 continue the eighth-note pattern. Measure 62 features a dynamic shift to *f* (forte) with a crescendo hairpin.
- System 3 (Measures 63-65):** Measures 63 and 64 continue the eighth-note pattern. Measure 65 features a dynamic shift to *f* (forte) with a crescendo hairpin.
- System 4 (Measures 66-68):** Measures 66 and 67 feature a dynamic shift to *p* (piano) with a decrescendo hairpin. Measure 68 features a dynamic shift to *f* (forte) with a crescendo hairpin.
- System 5 (Measures 69-71):** Measures 69 and 70 feature a dynamic shift to *p* (piano) with a decrescendo hairpin. Measure 71 features a dynamic shift to *f* (forte) with a crescendo hairpin.
- System 6 (Measures 72-74):** Measures 72 and 73 feature a dynamic shift to *f* (forte) with a crescendo hairpin. Measure 74 features a dynamic shift to *p* (piano) with a decrescendo hairpin.

75

p

78

poco a poco cresc.

80

82

84

f

86

88

90

92

94

p 0 0

97

mf

99

101

103

Ossia

106

108

f

f

111

f

113

115

117

sub. p poco a poco cresc.

120

122

ff

124

126

allargando rit.

129

Recitativo

131

rit.

Adagissimo ♩ = 40

133

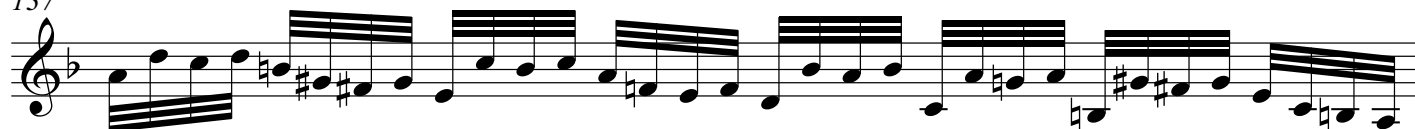
ad lib.

Presto $\text{♩} = 60$ 

136



137



138

rit.



Ossia (Adagio appassionato)

139

Vivace

139



140

140



142

142

rit.

Molto adagio $\text{♩} = 30$ 