

Orchestra 1
1st Solo Horn in F/E♭/A♭ Alto

Louis Spohr
(1784-1859)

Symphony No.7
Op. 121

I. Kinderwelt

1st Solo Horn in F/E♭/A♭ Alto

Louis Spohr
(1784-1859)

Introduzione. Adagio ♩=108

solo
in F *pp* *cresc.* *f* *dim.* *p* *cresc.* *f* *dim.*

8 *p* *cresc.* *f* *dim.*

14 poco rit. Allegretto ♩=138

2 *f*

Vln.1

25 *dim.* 4 *p* 2 Vln.1

39 *f* 3 **A** 2 *p* Vc. pizz.

52 2 6 Fl. + Cl. 3 3 3

65 *p* 2 **B** 10 *f*

81 Vln.1 *pp* 3 3 3 3 3 3 3 3

90 3 3 3 3 3 3 3 3 3 3

98 3 3 *cresc.* 3 3 *f*

102 7 Vln.1 3 3 3 Fl. 3 3 3

111 **C** *f* 3 Vln.1 3 3 3 3 3 3 3 3

118 *p* 2 2

129 1. 2 2 Vln.1 *f* 14

154 **D** 13 2 *f*

176 *dim.* 4 2 Vln.1 *p*

190 *f* 15

211 Vln.1 3 3 3 Fl. 3 3 3 *p cresc.*

216 **E** 10 Vln.1 *f* *pp* 3 3 3 3

234 3 3 3 3 3 3 3 3 3 3

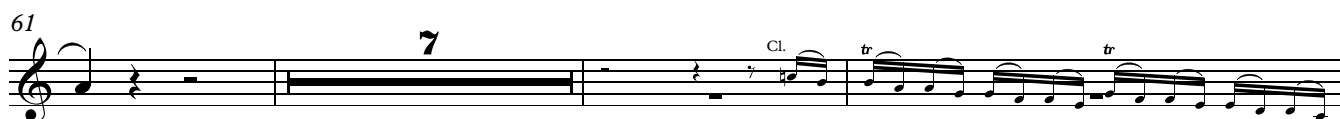
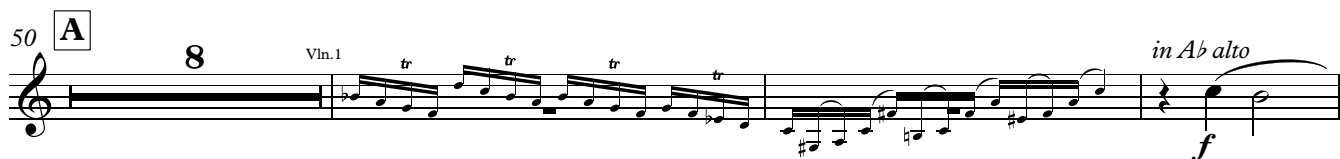
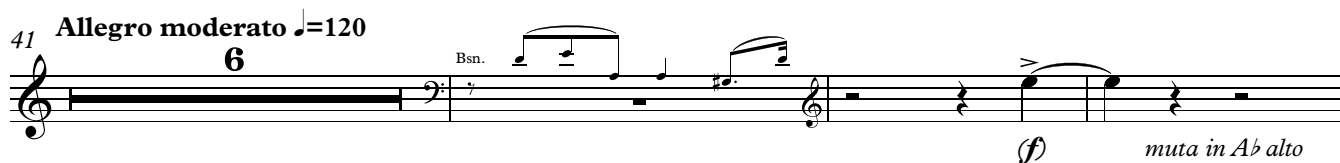
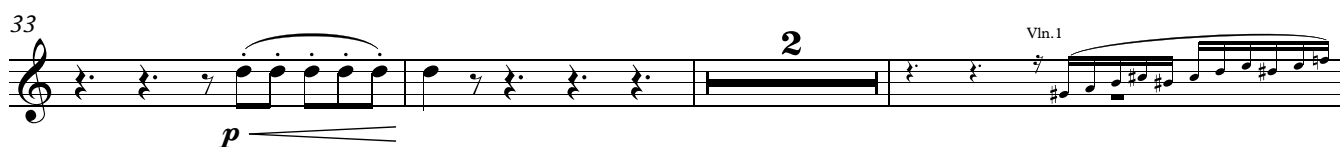
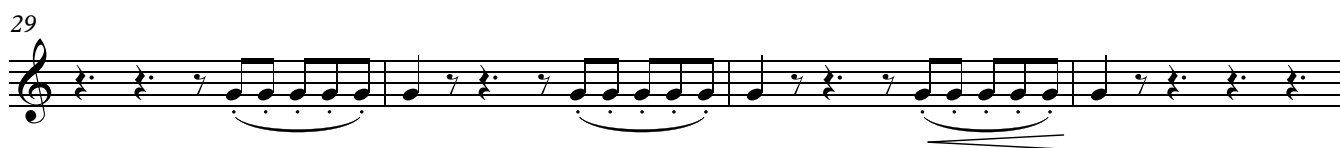
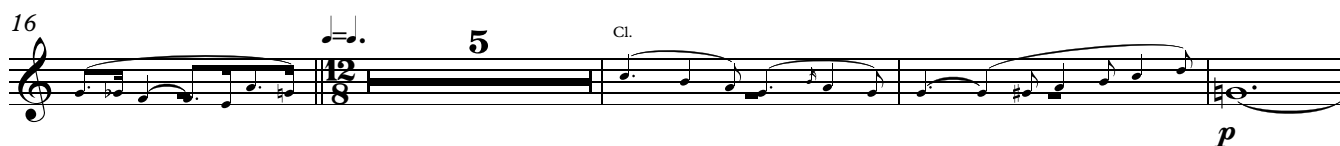
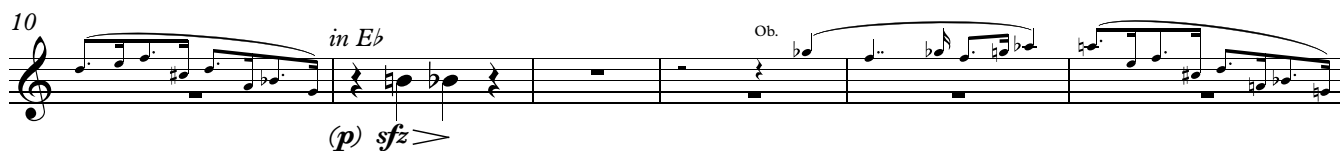
242 3 3 3 3 *cresc.* 3 3 3 5

253 Vln.1 3 3 3 Cl. 3 3 3 **F** *(p cresc.)* *f* 3

262 Vln.1 3 3 3 3 3 3 3 3 *p* 3 3 3

269 3 *p* *pp* 9 *muta in Eb*

II. Zeit der Leidenschaften

1 **Larghetto** (♩=96)

71 **B** Solo Ob. *p* *solo*

77

82 **6** Vln.1

92 **C** *ff* **5** Solo Vln.1

102 Tutti Vln. 1

106 *p*

111 **D** *p*

117 **6** *f*

127

131 **E** Fl.

138 *f* **8** *muta in F*

151 Vln.1

Orchestra 1, 1st Solo Horn in F/E♭/A♭ Alto

6

155 **6** Bsn. *in F* **2** *f*

167 **F** **4** Ob.

176 **4** Fl.

186 **3** Vln.1 *p cresc.*

196 **G** **3** *f*

206 **2** *p*

214 **H** **5** Db Hn.2

223 **7** Fl. *(p)*

236 *f* *f*

242 **J** **10** Bsn.

259 Fl. *f*

267 *ff* *muta in E♭*

III. Endlicher Sieg des Göttlichen

1 **Presto** ♩.=96 **17** **A** Fl. *in E♭*

24 **7** Vln. 1

35 **17** Fl. 1

54 *in E♭* **9** *f*

67 **B** Vln. 1 Cl. 1

70 **6**

78 **20** **C** Vln. 1

101 **27** Fl.

132 *p*

139 **D** **3** **3** Vln. 1

149 **3**

157 Fl. 1 **3**

Orchestra 1, 1st Solo Horn in F/E \flat /A \flat Alto

8

162 **3**

f *sfz*

170 **E** **2** Fl.1

175 *ff* *f*

180 *sfz* *dim.* (*pp*)

184 **15** **F** **4** Cl.

207 **11** **8**

227 **G** Fl.

233 **20** Ob.

258 *p*

265 **H** **42** **2** **12** **8**

310 Vln. 1 **Adagio** (♩=132)

2

316 Vln. 1

p

321

I

Vln. 1 (*p*) *cresc.* *f*

328

ff *p*

336

Fl. 1 *ff*

346

Vln. 1

357

pp