

Piano I

Fuga XXIII

BWV 892

J. Sebastian Bach
Arr. Peter H. Besseling

Measures 1-5 of the Fuga XXIII. The piece is in B-flat major (two flats) and common time. Measures 1 and 2 feature a four-measure rest in both staves, indicated by a '4' above the staff. Measures 3 and 4 show the bass line beginning with a half note B-flat, followed by a half note A-flat, and then a half note G. Measure 5 continues the bass line with a half note F, a half note E-flat, and a half note D.

Measures 6-10 of the Fuga XXIII. The treble staff has a four-measure rest in each measure. The bass line continues with a half note C, a half note B-flat, and a half note A-flat in measure 6. In measure 7, the bass line has a half note G, a half note F, and a half note E-flat. In measure 8, the bass line has a half note D, a half note C, and a half note B-flat. In measure 9, the bass line has a half note A-flat, a half note G, and a half note F. In measure 10, the bass line has a half note E-flat, a half note D, and a half note C.

Measures 11-15 of the Fuga XXIII. The treble staff begins with a half note B-flat, a half note A-flat, and a half note G in measure 11. In measure 12, the treble staff has a half note F, a half note E-flat, and a half note D. In measure 13, the treble staff has a half note C, a half note B-flat, and a half note A-flat. In measure 14, the treble staff has a half note G, a half note F, and a half note E-flat. In measure 15, the treble staff has a half note D, a half note C, and a half note B-flat.

Measures 16-20 of the Fuga XXIII. The treble staff begins with a half note B-flat, a half note A-flat, and a half note G in measure 16. In measure 17, the treble staff has a half note F, a half note E-flat, and a half note D. In measure 18, the treble staff has a half note C, a half note B-flat, and a half note A-flat. In measure 19, the treble staff has a half note G, a half note F, and a half note E-flat. In measure 20, the treble staff has a half note D, a half note C, and a half note B-flat.

Measures 21-25 of the Fuga XXIII. The treble staff begins with a half note B-flat, a half note A-flat, and a half note G in measure 21. In measure 22, the treble staff has a half note F, a half note E-flat, and a half note D. In measure 23, the treble staff has a half note C, a half note B-flat, and a half note A-flat. In measure 24, the treble staff has a half note G, a half note F, and a half note E-flat. In measure 25, the treble staff has a half note D, a half note C, and a half note B-flat.

29

34

39

44

49

54

59

64

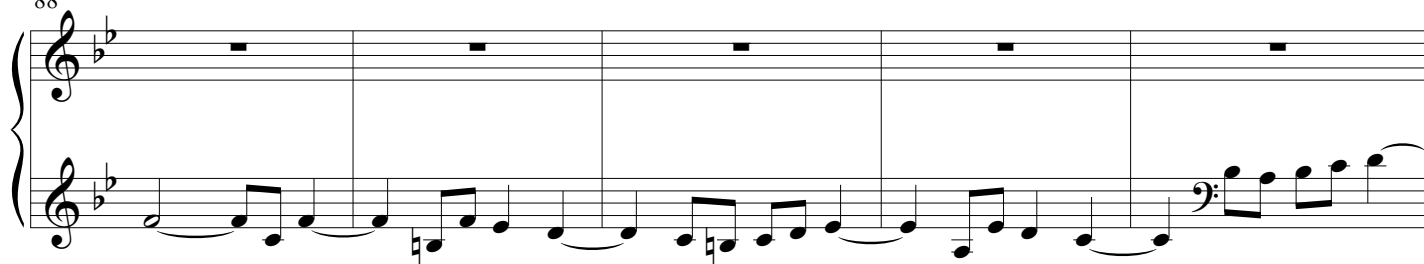
69

73

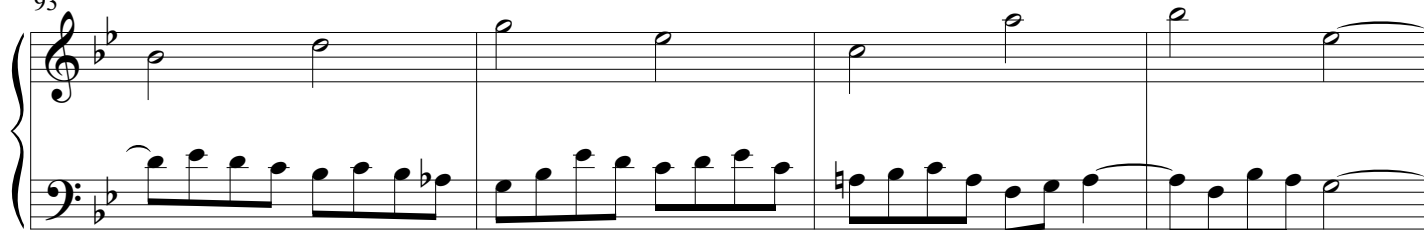
77

82

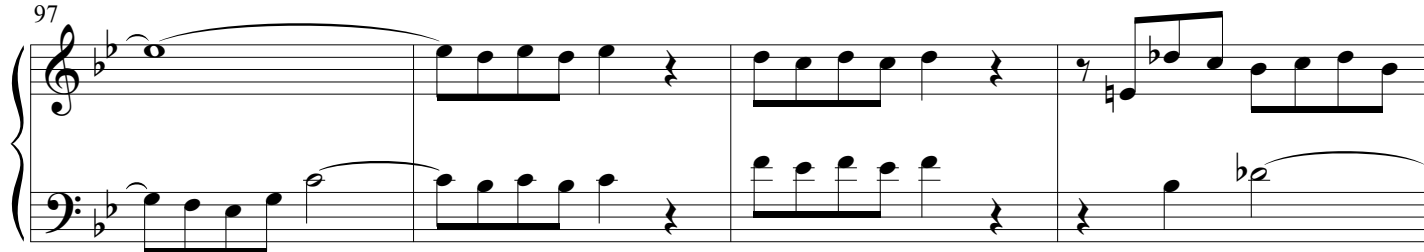
88



93



97



101

