

Praeludium et Fuga XXIII

BWV 892

J. SEBASTIAN BACH

PETER H. BESSELING

Measures 1-2 of the Praeludium. The treble clef staff begins with a C-clef and a key signature of two flats (B-flat and E-flat). The time signature is common time (C). The melody starts with a quarter rest, followed by eighth notes G4, A4, B-flat4, and C5. A trill is marked over the B-flat4 note. The bass clef staff has a whole rest in both measures.

Measures 3-5 of the Praeludium. Measure 3 starts with a measure rest, followed by eighth notes G4, A4, B-flat4, and C5. Measures 4 and 5 continue the eighth-note melody in the treble clef. The bass clef staff has a whole rest in measure 3, and then eighth notes G3, A3, B-flat3, and C4 in measures 4 and 5.

Measures 6-9 of the Praeludium. Measures 6 and 7 continue the eighth-note melody in the treble clef. Measure 8 has a half rest in the treble and eighth notes G3, A3, B-flat3, and C4 in the bass. Measure 9 has a half rest in the treble and eighth notes G3, A3, B-flat3, and C4 in the bass.

Measures 10-12 of the Praeludium. Measure 10 has a half rest in the treble and eighth notes G3, A3, B-flat3, and C4 in the bass. Measure 11 has a half rest in the treble and eighth notes G3, A3, B-flat3, and C4 in the bass. Measure 12 has a half rest in the treble and eighth notes G3, A3, B-flat3, and C4 in the bass.

Measures 13-15 of the Praeludium. Measure 13 has a half rest in the treble and eighth notes G3, A3, B-flat3, and C4 in the bass. Measure 14 has a half rest in the treble and eighth notes G3, A3, B-flat3, and C4 in the bass. Measure 15 has a half rest in the treble and eighth notes G3, A3, B-flat3, and C4 in the bass.

Praeludium et Fuga XXIII - PIANO I

Example 16 continues with measures 16-18. The notation shows a continuation of the melodic and harmonic patterns established in the previous measures, with the right hand playing a series of eighth and sixteenth notes and the left hand providing a steady bass line.

19

Example 19 continues with measures 19-21. The notation shows a continuation of the melodic and harmonic patterns established in the previous measures, with the right hand playing a series of eighth notes and the left hand providing a rhythmic accompaniment.

22

This block contains measures 22 through 25 of the musical score. Measure 22 features a treble clef with a key signature of two flats and a 3/4 time signature. The melody begins with a quarter note G4, followed by a quarter rest, and then a quarter note A4. The bass line has a whole rest. Measure 23 continues the melody with a quarter note Bb4, a quarter rest, and a quarter note C5. The bass line remains on a whole rest. Measure 24 shows the melody with a half note D5 and a quarter note E5. The bass line has a half note D4 and a quarter note E4. Measure 25 concludes the phrase with a half note F5 and a quarter note G5. The bass line has a half note F4 and a quarter note G4. The system ends with a double bar line.

29

This block contains measures 29, 30, and 31 of the musical score. Measure 29 features a treble staff with a quarter rest, an eighth-note G4, and a quarter-note A4. The bass staff has a quarter-note G2, followed by a sixteenth-note triplet of A2, B2, and C3, and a quarter-note D2. Measure 30 has a treble staff with a quarter-note G4, an eighth-note A4, and a quarter-note B4. The bass staff has a quarter-note G2, followed by a sixteenth-note triplet of A2, B2, and C3, and a quarter-note D2. Measure 31 has a treble staff with a quarter-note G4, an eighth-note A4, and a quarter-note B4. The bass staff has a quarter-note G2, followed by a sixteenth-note triplet of A2, B2, and C3, and a quarter-note D2.

32

This block contains measures 32, 33, and 34 of the musical score. Measure 32 begins with a treble clef and a key signature of two flats (B-flat and E-flat). The melody in the treble staff starts with a quarter rest, followed by a quarter note G4, an eighth note A4, and a quarter note B-flat4. The bass staff continues with a quarter note G3, an eighth note A3, and a quarter note B-flat3. Measure 33 continues the melody in the treble staff with a quarter note C5, an eighth note B-flat4, and a quarter note A4. The bass staff continues with a quarter note G3, an eighth note A3, and a quarter note B-flat3. Measure 34 concludes the melody in the treble staff with a quarter note G4, an eighth note A4, and a quarter note B-flat4. The bass staff concludes with a quarter note G3, an eighth note A3, and a quarter note B-flat3.

35

35

Example 10-10 (continued)

38

38

This block contains measures 38, 39, and 40 of the musical score. Measure 38 features a treble staff with a whole rest followed by a sixteenth-note triplet of G4, A4, and Bb4, and a bass staff with a quarter note G3, a triplet of eighth notes (F#4, G4, A4), and a quarter rest. Measure 39 has a treble staff with a half note G4, a quarter note F#4, and a quarter rest, and a bass staff with a half note G3, a quarter note F#4, and a quarter rest. Measure 40 consists of a treble staff with a half note G4 and a quarter rest, and a bass staff with a half note G3 and a quarter rest.

41

41

41

42

43

44

44

44

Fuga

10

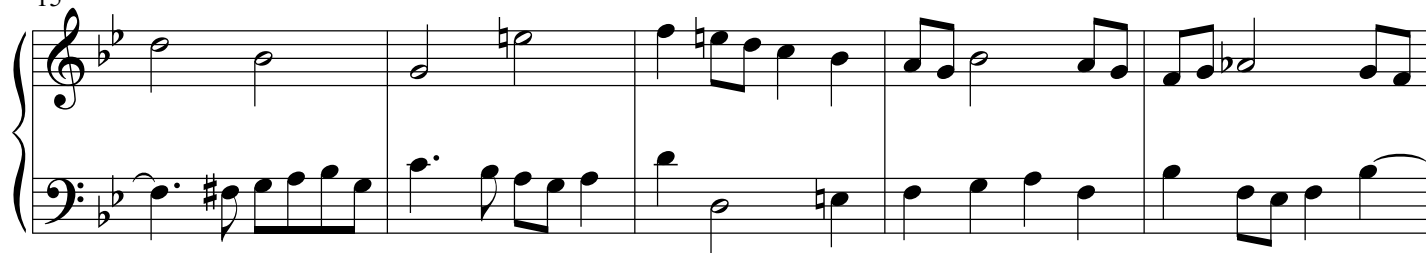
10

Musical score for 'The Rose Tree'. The score is written for piano (p) and features a treble and bass clef. The key signature is one flat (B-flat). The melody is primarily in the bass clef, with some notes in the treble clef. The piece concludes with a final chord in the bass clef.

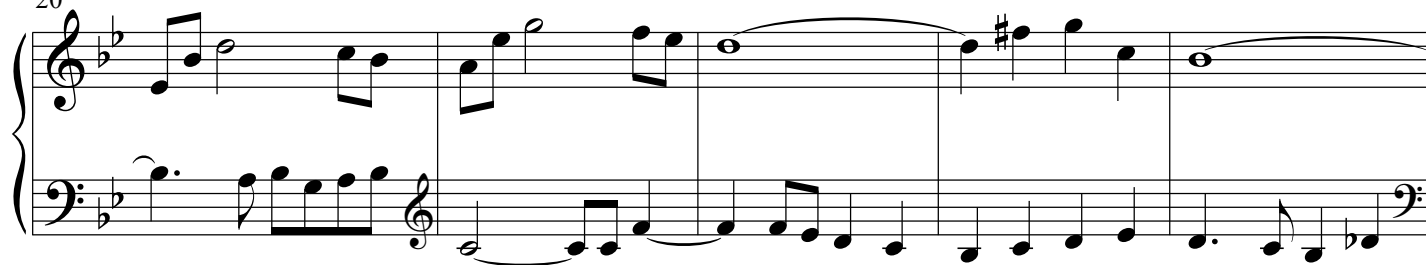
4

Draeludium et Fuga XXIII - PIANO I

15



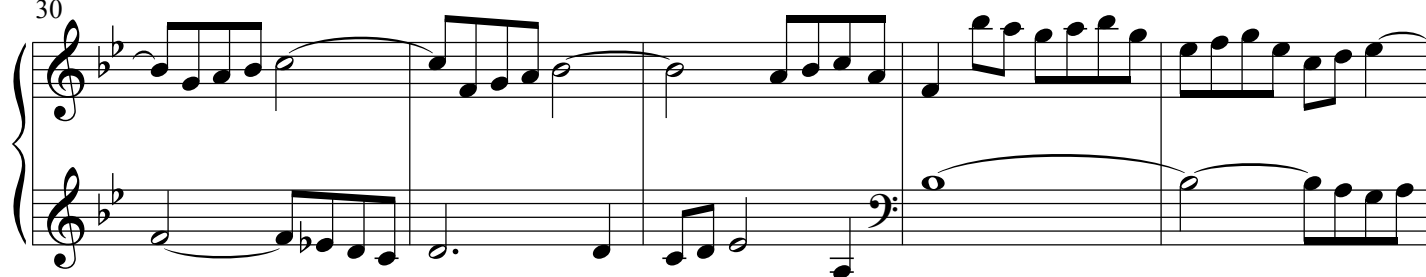
20



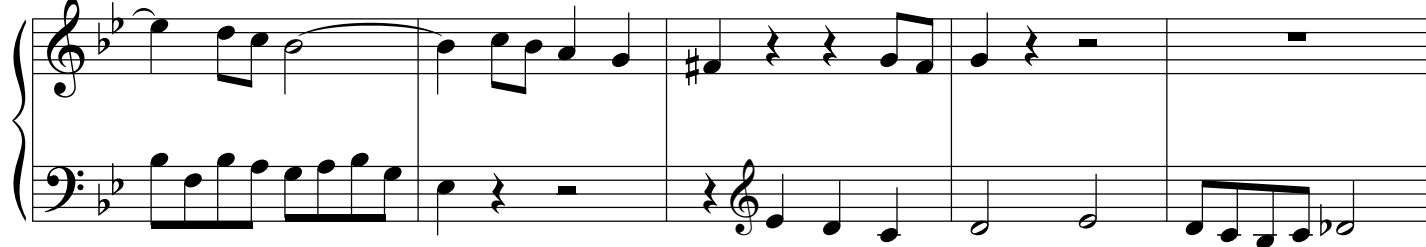
25



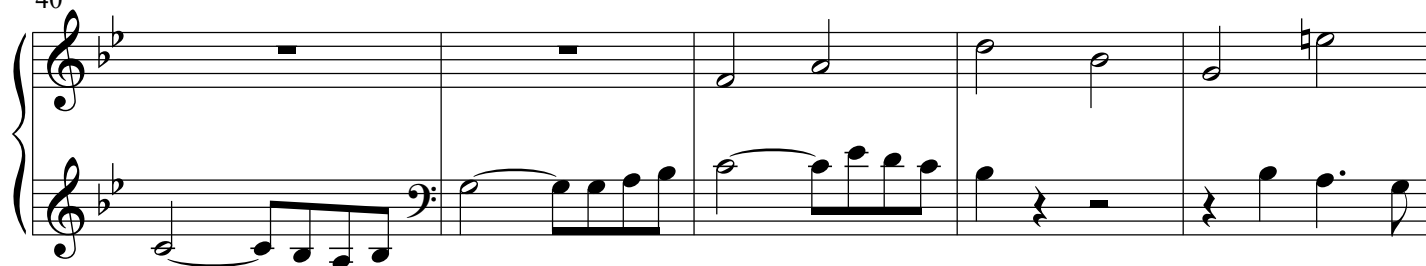
30



35



40



45

Measures 45-49. The treble clef staff contains a melodic line with eighth and sixteenth notes, including a trill in measure 47. The bass clef staff is mostly silent, with a few notes in measure 49.

50

Measures 50-54. The treble clef staff continues the melodic line with eighth and sixteenth notes. The bass clef staff has a few notes in measure 54.

55

Measures 55-60. The treble clef staff continues the melodic line. The bass clef staff has a few notes in measure 60.

61

Measures 61-65. The treble clef staff continues the melodic line. The bass clef staff has a few notes in measure 65.

66

Measures 66-70. The treble clef staff continues the melodic line. The bass clef staff has a few notes in measure 70.

70

Measures 70-74. The treble clef staff continues the melodic line. The bass clef staff has a few notes in measure 74.

6

Draeludium et Fuga XXIII - PIANO I

74

